

# RXT-X<sup>®</sup> RS 325

The ultimate offshore performance watercraft.


What’s New

- 10.25 in. touchscreen display

Key Features

- Low-rise racing handlebar
- Ergolock™ two-piece racing seat
- Tilt steering
- X-sponsons
- Full-length angled wedges
- BRP Audio – Premium System
- Hydraulic steering damper
- Stainless polished impeller
- Large swim platform with LinQ® attachment system
- Extended VTS (Variable Trim System)



 NEW Gulfstream Blue Premium

Rotax<sup>®</sup> 1630 ACE™ - 325

CAPACITY	
Rider Capacity	3
Weight Capacity	600 lb / 273 kg
Fuel Capacity	18.5 US gal / 70 L
Glove Box	0.8 US gal / 2.9 L
Front Bin	25.3 US gal / 96 L
Storage Capacity Total	26.1 US gal / 98.9 L

DIMENSIONS	
Length (bumper to bumper)	135.8" / 345 cm
Width	49.2" / 125 cm
Height	45.3" / 115 cm

HULL	
Type	ST3 Hull
Material	Fiberglass

FEATURES	
<ul style="list-style-type: none"><li>• Seat strap</li><li>• iBR<sup>®</sup> – Intelligent Brake &amp; Reverse*</li><li>• RF D.E.S.S.™ key</li><li>• Direct-access front storage</li><li>• Watertight phone compartment</li></ul>	<ul style="list-style-type: none"><li>• Knee pads</li><li>• Wide-angle mirrors</li><li>• Round handle grips</li><li>• Footwell carpets</li><li>• USB port</li><li>• Ski tow eye</li></ul>

ST3<sup>®</sup> Hull

ROTAX ENGINE	
Horsepower	325 hp
Intake System	Supercharged with external intercooler
Displacement	1,630 cc
Cooling	Closed-Loop Cooling System (CLCS)
Reverse System	Electronic iBR
Fuel Type	98 Octane
Throttle System	iTC™ (Intelligent Throttle Control)
Exhaust System	D-Sea-Bel™ system

GAUGE	
Type of Gauge	10.25 in. touchscreen display
Main Functions	<ul style="list-style-type: none"><li>• BRP Connect</li><li>• Music</li><li>• Navigation</li><li>• Bluetooth* connectivity</li><li>• Speedometer</li><li>• RPM</li><li>• Clock</li><li>• Extended VTS™</li><li>• Fuel consumption</li><li>• Fuel autonomy</li><li>• Top speed and average speed</li><li>• Vehicle hours</li></ul>
iTC System - Mode	Eco®, Sport, Speed Regulator, Slow Speed & Launch Control Mode

WEIGHT	
Dry Weight	842 lb / 382 kg

WARRANTY	
BRP limited warranty covers the watercraft for two years, applicable to Australia and New Zealand	

\*Electronic brake, neutral and reverse.

©2026 Bombardier Recreational Products Inc., (BRP). All rights reserved. ®, TM and the BRP logo are trademarks of Bombardier Recreational Products Inc. or its affiliates. \*All other trademarks are the property of their respective owners. BRP reserves the right to discontinue or change specifications, prices, designs, features, models or equipment without incurring obligation. Some models shown may include optional equipment. Product performance may vary depending on external factors. All competitive comparisons are based on published manufacturer specifications at time of creating this document. The warranty is subject to the exclusions, limitations of liabilities and all other terms and conditions of BRP's standard limited warranty. Read the operator's guide and safety instructions. All models of PVC are meant to be used by drivers of age 16 and older. Observe applicable laws and regulations. Always wear appropriate protective clothing, including a personal flotation device and neoprene shorts. Riding and alcohol/drugs don't mix.



● NEW Gulfstream Blue Premium

### Feature Highlights



#### Rotax 1630 ACE - 325 Engine

The Rotax 1630 ACE - 325 is the industry's most powerful PWC engine from factory. With its 325 hp, this engine delivers incredible acceleration and power thanks to innovative engineering for uncompromised offshore performance.



#### Hydraulic Steering Damper

Three steering positions to quickly control the stiffness. It adds riding precision by removing undesired input in rougher conditions. It provides a premium feeling and improved control to the rider.



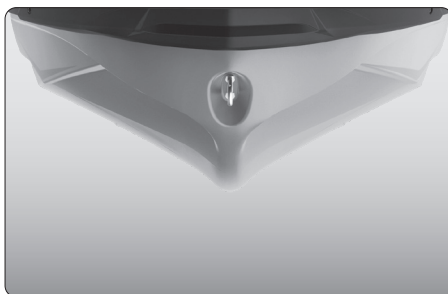
#### 10.25 in. Touchscreen Display

Bring your on-water experience to another level with this premium and elegant touchscreen display developed specifically for Sea-Doo riders. Enjoy enhanced connectivity and intuitive features including ride statistics, a compass, media control, marine navigation with the BRP GO! app and much more.



#### Ergolock System

A narrow seat profile with deep knee pockets lets riders sit naturally and use the lower body to hold onto the machine for more control.



#### ST3 Hull

An innovative hull that sets the benchmark for rough water handling, stability, and offshore performance.



#### Swim platform with Integrated LinQ System

Exclusive quick-attach system on the largest swim platform in the Sea-Doo family that allows for easy installation of accessories.

**SEA-DOO®**

