

GTR™-X® 300

High performance
and high value.

Key Features

- Large front storage
- Watertight phone compartment
- LinQ® attachment system
- Double-angled footwell wedges
- Stainless polished impeller
- Low-rise racing handlebar
- Ergolock™ two-piece racing seat
- **Tech Package (optional):**
 - BRP Audio - Premium System
 - Full-color 7.8 in. wide display
 - USB port



 Eclipse Black and Deep Marsala

Rotax® 1630 ACE™ - 300

GTI® Hull

Extended Variable Trim System (VTS™)

CAPACITY

Rider Capacity	3
Weight Capacity	600 lb / 273 kg
Fuel Capacity	18.5 US gal / 70 L
Glove Box	2.3 US gal / 8.8 L
Front Bin	38 US gal / 144 L
Storage Capacity Total	40.3 US gal / 152.8 L

DIMENSIONS

Length (bumper to bumper)	130.7" / 332 cm
Width	49.2" / 125 cm
Height	43.4" / 110 cm

HULL

Type	GTI Hull
Material	Polytec™

FEATURES

- Seat strap
- iBR® - Intelligent Brake & Reverse*
- RF D.E.S.S.™ key
- Wide-angle mirrors
- Round handle grips
- Footwell carpets
- Large swim platform
- Tow hook

ROTAX ENGINE

	1630 ACE - 300
Horsepower	300 hp
Intake System	Supercharged with external intercooler
Displacement	1,630 cc
Cooling	Closed-Loop Cooling System (CLCS)
Reverse System	Electronic iBR
Fuel Type	98 Octane
Throttle System	iTC™ (Intelligent Throttle Control)
Exhaust System	D-Sea-Bel™ system

GAUGE

Type of Gauge	7.6 in. digital display 7.8 in. color LCD display (with Tech Package)
Main Functions	<ul style="list-style-type: none"> • BRP Connect (opt.) • Music (opt.) • Navigation (opt.) • Bluetooth* connectivity (opt.) • Fuel consumption (opt.) • Speedometer • RPM • Clock • Extended VTS • Fuel autonomy • Top speed and average speed • Vehicle hours

iTC System - Mode

Eco®, Sport, Speed Regulator, Slow Speed & Launch Control Mode

WEIGHT

Dry Weight	794 lb / 360 kg 813 lb / 369 kg (with sound system)
------------	--

WARRANTY

BRP limited warranty covers the watercraft for two years, applicable to Australia and New Zealand


*Electronic brake, neutral and reverse.

©2026 Bombardier Recreational Products Inc., (BRP). All rights reserved. ®, TM and the BRP logo are trademarks of Bombardier Recreational Products Inc. or its affiliates. *All other trademarks are the property of their respective owners. BRP reserves the right to discontinue or change specifications, prices, designs, features, models or equipment without incurring obligation. Some models shown may include optional equipment. Product performance may vary depending on external factors. All competitive comparisons are based on published manufacturer specifications at time of creating this document. The warranty is subject to the exclusions, limitations of liabilities and all other terms and conditions of BRP's standard limited warranty. Read the operator's guide and safety instructions. All models of PVC are meant to be used by drivers of age 16 and older. Observe applicable laws and regulations. Always wear appropriate protective clothing, including a personal flotation device and neoprene shorts. Riding and alcohol/drugs don't mix.

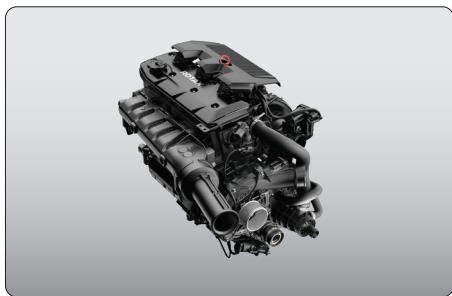
SEA-DOO®





 Eclipse Black and Deep Marsala

Feature Highlights



Rotax 1630 ACE - 300 Engine

The powerful Rotax® 1630 ACE™ - 300 levels up your performance to your liking by delivering high efficiency and a world-class acceleration.



Ergolock Two-Piece Racing Seat

Tacky surface and back support enhance grip during performance riding.



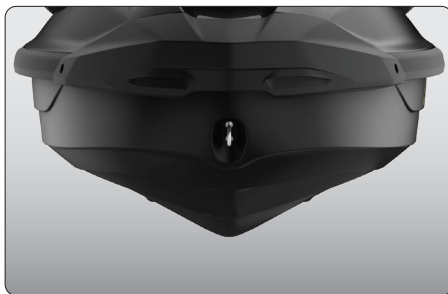
Low-Rise Handlebars

Creates a more streamlined, race-oriented riding position.



Tech Package (optional)

Levels up entertainment and functionality on the water. It includes a factory-installed, truly waterproof Bluetooth® audio system, a 7.8" color display and a USB port.



GTI Hull

This moderate V-shaped hull guarantees a stable, enjoyable ride in variable water conditions. Confident, predictable handling but incredibly playful when you want it to be.



Double-Angled Footwell Wedges

Lined with premium carpets to provide superior foot grip.