

GTX™ 170/230

Comfort, control and power
are always in style.

Key Features

- iBR - Intelligent Brake & Reverse
- VTS (Variable Trim System)
- LinQ® attachment system
- Boarding ladder
- Direct-access front storage
- Watertight phone compartment
- Tech Package (optional):
 - BRP Audio - Premium System
 - Full-color 7.8 in. wide display
 - USB port



 Blue Abyss and Gulfstream Blue

Rotax® 1630 ACE™ - 170/ 230

ST3® Hull

iDF - Intelligent Debris-Free Pump System

CAPACITY

Rider Capacity	3
Weight Capacity	600 lb / 273 kg
Fuel Capacity	18.5 US gal / 70 L
Glove Box	0.8 US gal / 2.9 L
Front Bin	25.3 US gal / 96 L
Storage Capacity Total	26.1 US gal / 98.9 L

DIMENSIONS

Length (bumper to bumper)	135.9" / 345.1 cm
Width	49.2" / 125 cm
Height	44.9" / 114 cm

HULL

Type	ST3 Hull
Material	Fiberglass

FEATURES

- Ergolock™ two-piece seat with stepped design
- Seat strap
- RF D.E.S.S.™ key
- Wide-angle mirrors
- Handle grips with palm rest
- Footwell carpets
- Large swim platform
- Tilt steering
- Ski tow eye

ROTAX ENGINE	1630 ACE - 170	1630 ACE - 230
Model	GTX 170	GTX 230
Horsepower	170 hp	230 hp
Intake System	Naturally aspirated	Supercharged with external intercooler
Displacement	1,630 cc	
Cooling	Closed-Loop Cooling System (CLCS)	
Reverse System	Electronic iBR*	
Fuel Type	91 Octane	98 Octane
Throttle System	iTC™ (Intelligent Throttle Control)	
Exhaust System	D-Sea-Bel™ system	

GAUGE

Type of Gauge	7.6 in. digital display 7.8 in. color LCD display (with Tech Package)
Main Functions	<ul style="list-style-type: none"> • BRP Connect (opt.) • Music (opt.) • Navigation (opt.) • Bluetooth* connectivity (opt.) • Fuel consumption (opt.) • Speedometer • RPM • Clock • VTS™ • Fuel autonomy • Vehicle hours

iTC System - Mode	Eco®, Sport, Speed Regulator & Slow Speed Mode
-------------------	--

WEIGHT

Dry Weight	776 lb / 352 kg 796 lb / 361 kg (with Tech Package)	809 lb / 367 kg 829 lb / 376 kg (with Tech Package)
------------	--	--

WARRANTY

BRP limited warranty covers the watercraft for two years, applicable to Australia and New Zealand

*Electronic brake, neutral and reverse.

©2026 Bombardier Recreational Products Inc., (BRP). All rights reserved. ®, TM and the BRP logo are trademarks of Bombardier Recreational Products Inc. or its affiliates. *All other trademarks are the property of their respective owners. BRP reserves the right to discontinue or change specifications, prices, designs, features, models or equipment without incurring obligation. Some models shown may include optional equipment. Product performance may vary depending on external factors. All competitive comparisons are based on published manufacturer specifications at time of creating this document. The warranty is subject to the exclusions, limitations of liabilities and all other terms and conditions of BRP's standard limited warranty. Read the operator's guide and safety instructions. All models of PVC are meant to be used by drivers of age 16 and older. Observe applicable laws and regulations. Always wear appropriate protective clothing, including a personal flotation device and neoprene shorts. Riding and alcohol/drugs don't mix.

SEA-DOO®





Blue Abyss and Gulfstream Blue

Feature Highlights



iDF - Intelligent Debris Free System

An innovative, industry-first system that allows you to free your pump of weeds and debris with intuitive handlebar-activated controls.



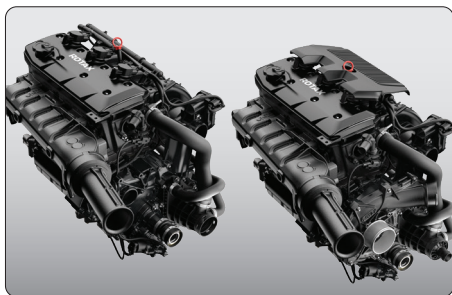
Tech Package (optional)

Levels up entertainment and functionality on the water. It includes a factory-installed, truly waterproof Bluetooth® audio system, a 7.8" color display and a USB port.



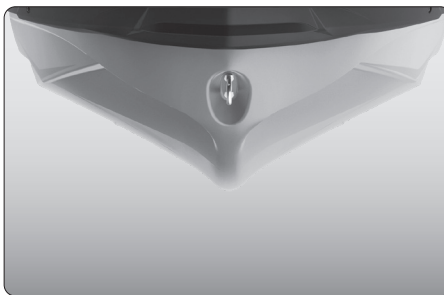
Swim Platform with Integrated LinQ System

Exclusive quick-attach system on the largest swim platform in the Sea-Doo family that allows for easy installation of accessories.



Rotax 1630 ACE - 170 / 230

The 170 hp boasts naturally aspirated punch with optimal fuel economy. The 230 hp supercharged version allows you to level up the performance to your liking.



ST3 Hull

An innovative hull that sets the benchmark for rough water handling, stability, and offshore performance.



Direct-Access Front Storage

All your gear within arm's reach thanks to a 25.3 US gal (96 L) front storage area, easily accessible from a seated position. Simply raise the handlebars to access essentials for any adventure.¹

SEA-DOO®