

Explorer[®] Pro 170/230

The ultimate companion
for any adventure.

What’s New

- 10.25 in. touchscreen display

Key Features

- iDF - Intelligent Debris-Free System
- Gunwale footrests
- LinQ Multi Cargo Rack
- Touring windshield
- LinQ Explorer bag
- Heavy-duty grab handles
- Rear deck extension
- Adjustable handlebar riser
- Hydraulic steering damper
- Explorer Touring seat and knee pads

 Iceland Grey



Rotax[®] 1630 ACE™ - 170 / 230

ST3[®] Hull

BRP Audio - Premium System

CAPACITY

| | |
|--|------------------------|
| Rider Capacity | 3 |
| Weight Capacity | 600 lb / 273 kg |
| Rear Platform Capacity (without passenger) | 221 lb / 100 kg |
| Fuel Capacity | 18.5 US gal / 70 L |
| Glove Box | 0.8 US gal / 2.9 L |
| Front Bin | 25.3 US gal / 96 L |
| LinQ Explorer Bag | 26.4 US gal / 100 L |
| Storage Capacity Total | 52.3 US gal / 198.9 L* |

DIMENSIONS

| | |
|---------------------------|----------------|
| Length (bumper to bumper) | 146.8" / 373.4 |
| Width | 49.6" / 126 cm |
| Height | 55.5" / 140 cm |

HULL

| | |
|----------|------------|
| Type | ST3 Hull |
| Material | Fiberglass |

FEATURES

- Seat strap
- iBR[®] - Intelligent Brake & Reverse **
- VTS™ (Variable Trim System)
- Boarding ladder
- RF D.E.S.™ key
- Direct-access front storage
- Watertight phone compartment
- LinQ[®] attachment system
- Wide angle mirrors
- Handle grips with palm rest
- Footwell carpets
- Large swim platform
- 1 LinQ front support
- Cupholder
- USB port
- Tilt steering
- Ski tow eye

ROTAX ENGINE

| | | |
|-----------------|--------------------------------------|--|
| | 1630 ACE - 170 | 1630 ACE - 230 |
| Horsepower | 170 hp | 230 hp |
| Intake System | Naturally aspirated | Supercharged with external intercooler |
| Displacement | 1,630 cc | |
| Cooling | Closed-Loop Cooling System (CLCS) | |
| Reverse System | Electronic iBR | |
| Fuel Type | 91 Octane | 98 Octane |
| Throttle System | iTCTM (Intelligent Throttle Control) | |
| Exhaust System | D-Sea-Bel™ system | |

GAUGE

| | | |
|-------------------|---|--------------------|
| Type of Gauge | 10.25 in. touchscreen display | |
| Main Functions | • BRP Connect | • Clock |
| | • Music | • VTS |
| | • Navigation | • Fuel consumption |
| | • Bluetooth® connectivity | • Fuel autonomy |
| | • Speedometer | • Depth finder |
| | • RPM | • Vehicle hours |
| iTC System - Mode | Eco®, Sport, Speed Regulator, Slow Speed & Accessory Mode | |

WEIGHT

| | | |
|------------|-----------------|-----------------|
| Dry Weight | 880 lb / 399 kg | 917 lb / 416 kg |
|------------|-----------------|-----------------|

WARRANTY

BRP limited warranty covers the watercraft for two years, applicable to Australia and New Zealand

*Electronic brake, neutral and reverse.

©2026 Bombardier Recreational Products Inc., (BRP). All rights reserved. ®, TM and the BRP logo are trademarks of Bombardier Recreational Products Inc. or its affiliates. *All other trademarks are the property of their respective owners. BRP reserves the right to discontinue or change specifications, prices, designs, features, models or equipment without incurring obligation. Some models shown may include optional equipment. Product performance may vary depending on external factors. All competitive comparisons are based on published manufacturer specifications at time of creating this document. The warranty is subject to the exclusions, limitations of liabilities and all other terms and conditions of BRP's standard limited warranty. Read the operator's guide and safety instructions. All models of PVC are meant to be used by drivers of age 16 and older. Observe applicable laws and regulations. Always wear appropriate protective clothing, including a personal flotation device and neoprene shorts. Riding and alcohol/drugs don't mix.





● Iceland Grey

Feature Highlights



Touring Windshield

An industry first that reduces noise and fatigue associated with prolonged wind pressure while also protecting against splashing and salt water exposure when riding offshore.



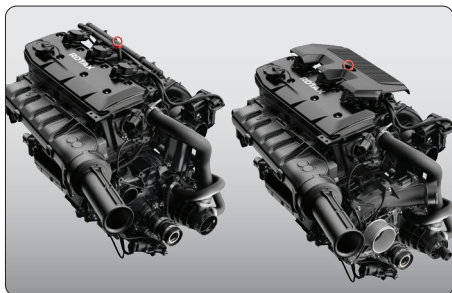
Extended Riding Comfort

With extended riding duration in mind, the Explorer Touring seat and knee pads, adjustable riser handlebars and gunwale footrests provide ultimate extended riding comfort.



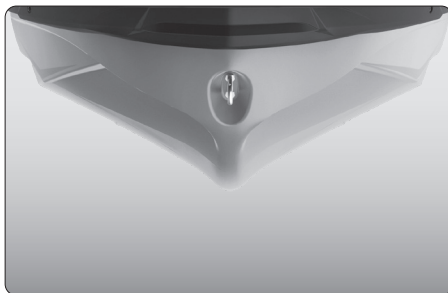
LinQ Explorer Bag

Keep extra gear dry and easily accessible with this 100 L (26.4 gal) bag. This exclusive LinQ compatible accessory is waterproof, functional and portable. It can be stacked on the LinQ plate/ LinQ accessories or carried as a backpack.



Rotax 1630 ACE - 170 / 230 Engines

Two engine options: the 170 hp boasts naturally aspirated punch with optimal fuel economy, or opt for the 230 hp engine with a supercharger and external intercooler.



ST3 Hull

An innovative hull that sets the benchmark for rough water handling, stability, and offshore performance.



Rear Deck Extension with LinQ Attachment System

Adds 11.5 inches to the back of the watercraft to increase stability, space, and storage capability. Enhance your storage capacity with the LinQ Multi Cargo Rack.¹