

# GTI™ SE 130/170

More convenience and comfort for days of family fun.

### What’s New

- iDF - Intelligent Debris-Free System

### Key Features

- iBR® - Intelligent Brake & Reverse
- Boarding ladder
- Variable Trim System (VTS)
- Two color options
- Slow speed mode / speed regulator



 NEW Eclipse Black and Laguna Green

### Rotax® 1630 ACE™ - 130 / 170

### GTI® Hull

### BRP Audio - Premium System (optional)

#### CAPACITY

Rider Capacity	3
Weight Capacity	600 lb / 273 kg
Fuel Capacity	18.5 US gal / 70 L
Glove Box	2.3 US gal / 8.8 L
Front Bin	38 US gal / 144 L
Storage Capacity Total	40.3 US gal / 152.8 L

#### DIMENSIONS

Length (bumper to bumper)	130.7" / 332 cm
Width	49.2" / 125 cm
Height	44.9" / 114 cm

#### HULL

Type	GTI Hull
Material	Polytec™

#### FEATURES

- Ergolock™ two-piece touring seat
- LinQ® attachment system
- Seat strap
- Wide-angle mirrors
- RF D.E.S.S.™ key
- Handle grips with palm rest
- Large front storage
- Footwell carpets
- Watertight phone compartment
- Large swim platform
- Tow hook

#### ROTAX ENGINE

	1630 ACE - 130	1630 ACE - 170
Model	GTI SE 130	GTI SE 170
Horsepower	130 hp	170 hp
Intake System	Naturally aspirated	
Displacement	1,630 cc	
Cooling	Closed-Loop Cooling System (CLCS)	
Reverse System	Electronic iBR®	
Fuel Type	91 Octane	
Throttle System	iTC™ (Intelligent Throttle Control)	
Exhaust System	D-Sea-Bel™ system	

#### GAUGE

Type of Gauge	4.5 in. digital display	
Main Functions	<ul style="list-style-type: none"><li>• Speedometer</li><li>• RPM</li><li>• Clock</li></ul>	<ul style="list-style-type: none"><li>• VTS™</li><li>• Fuel autonomy</li><li>• Vehicle hours</li></ul>
iTC System - Mode	Eco®, Sport, Speed Regulator & Slow Speed Mode	

#### WEIGHT

Dry Weight	741 lb / 336 kg 761 lb / 345 kg (with sound system)
------------	--

#### WARRANTY

BRP limited warranty covers the watercraft for two years, applicable to Australia and New Zealand

\*Electronic brake, neutral and reverse.

©2026 Bombardier Recreational Products Inc., (BRP). All rights reserved. ®, TM and the BRP logo are trademarks of Bombardier Recreational Products Inc. or its affiliates. \*All other trademarks are the property of their respective owners. BRP reserves the right to discontinue or change specifications, prices, designs, features, models or equipment without incurring obligation. Some models shown may include optional equipment. Product performance may vary depending on external factors. All competitive comparisons are based on published manufacturer specifications at time of creating this document. The warranty is subject to the exclusions, limitations of liabilities and all other terms and conditions of BRP's standard limited warranty. Read the operator's guide and safety instructions. All models of PVC are meant to be used by drivers of age 16 and older. Observe applicable laws and regulations. Always wear appropriate protective clothing, including a personal flotation device and neoprene shorts. Riding and alcohol/drugs don't mix.





 NEW Eclipse Black and Laguna Green

### Feature Highlights



#### BRP Audio - Premium System (optional)

A truly waterproof Bluetooth\* audio system for an extra dose of fun and entertainment on the water.



#### Swim Platform with Integrated LinQ System

Exclusive quick-attach system on the largest swim platform in its category that allows for easy installation of accessories.<sup>1</sup>



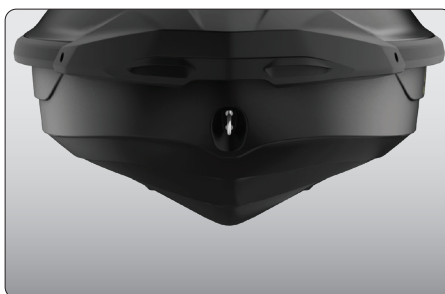
#### iDF - Intelligent Debris Free System

An innovative, industry-first system that allows you to free your pump of weeds and debris with intuitive handlebar-activated controls.



#### Rotax 1630 ACE - 130 / 170

Enjoy plenty of pep and great fuel economy with the 1630 ACE - 130 or opt for the 170 hp version, the most powerful naturally aspirated engine in the Sea-Doo® lineup.



#### GTI Hull

This moderate V-shaped hull guarantees a stable, enjoyable ride in variable water conditions. Confident, predictable handling but incredibly playful when you want it to be.



#### Boarding Ladder

Makes boarding from the water easier and quicker.

# SEA-DOO®

A BRP BRAND 