

2026 PRODUCT SPEC BOOK

Vehicles

Accessories

Parts & Maintenance

Apparel

Play & Licensing Products

A photograph of two Sea-Doo pontoon boats cruising on a calm lake during a golden sunset. The sun is low on the horizon, creating a warm, orange glow across the sky and reflecting on the water. The boats are moving from left to right, leaving white wakes behind them. The background shows a dark, silhouetted shoreline under a sky with scattered clouds.

SEA-DOO®

Product Spec Book 2026

Vehicle Specifications

Switch® Fish	6
Switch®	8
Switch® Sport	10
Switch® Cruise Limited	12
Switch® Cruise 18	14
Switch® Cruise 21	16
Comparative Chart	18

Accessories

Bundles	23
Covers	27
LinQ Accessory Positions	28
LinQ Cooler Guide	31
LinQ, Storage and Bags	32
Fishing Accessories	38
Biminis, Camper Enclosure and Tops	39
Audio, Electronics & Electrical	42
Flooring Accessories	45
Furniture & Seating	46
Watersport Accessories	48
Docking & Anchoring	50
Boating Essentials	51
Add a Splash of Color	52

Apparel

Sizing Chart	66
Find Your Perfect Fit	68
NEW Wave PFD	70
Sea-Doo Wave Grip PFD	71
Protective Gear	72
Sportswear	78
Protective Gear	85
Riding Gear	87
Family Fun	88
Play & Licensing Products	89
Replacements Parts	93

Parts & Maintenance

Parts	55
Engine Oils	56
XPS Products	56
Cleaning & Care Products	58
Sea-Doo Switch Cleaning 101	59
How to Use Them	61

Pricing is subject to change due to various taxes, tariffs or duties which may be applicable on certain products. BRP reserves the right to change the prices without incurring any obligations.

For advertising purposes, some scenes depicted in this catalog include professional riders and operators executing maneuvers under ideal and/or controlled conditions. Do not attempt any of these or any other risky maneuvers if they're beyond your level of riding ability as well as your understanding and respect for the performance of your Sea-Doo watercraft. RIDE SMART FROM THE START. Always ride responsibly and safely. Follow all instructional and safety materials. The warranty is subject to the exclusions, limitations of liabilities and all other terms and conditions of BRP's standard limited warranty. BRP recommends a minimum operator age of 16 years for riding a watercraft. Always wear appropriate protective clothing for your type of boating use, including a Coast Guard approved life jacket. Always remember that riding and alcohol/drugs don't mix. Operate your watercraft keeping a safe distance between yourself and others. Always observe applicable local laws and regulations. Because of its ongoing commitment to product quality and innovation, Bombardier Recreational Products Inc. (BRP) reserves the right, at any time, to discontinue or change specifications, prices, designs, features, models or equipment without incurring any obligations. Some models depicted herein may include optional equipment. Prices are based on Manufacturer Suggested Retail Prices. Dealers may sell for a different price. For Canada and US, taxes are not included. Depending on location, products are distributed by BRP US Inc., Bombardier Recreational Products Inc., BRP European Distribution SA, BRP Australia Pty Ltd., BRP Finland Oy, BRP Japan Ltd., BRP Comm & Trade (Shanghai) Co Ltd. or Bombardier Recreational Products Motores da Amazonia Ltda. * are registered trademarks and TM and the BRP logo are trademarks of Bombardier Recreational Products Inc. or its affiliates. * is a trademark of Bombardier Inc. used under license. Velcro is a registered trademark of Velcro Industries. Bluetooth is a registered trademark owned by Bluetooth SIG, Inc. Garmin and ECHOMAP are trademarks of Garmin Ltd. or its subsidiaries. GTX is a registered trademark of Castrol Limited, used under license. YUASA is a registered trademark of YUASA Batteries Inc. NGK is a registered trademark of NGK Spark Plugs, Ltd. Salt-Away is a trademark of Salt-Away Products. Slowtide is a trademark of Slowtide LLC. All other company and/or product names are trademarks of their respective holders. © 2025 BRP Inc. All rights reserved. Printed in Canada.



Vehicle Specifications

Vehicle Specifications

Switch® Fish	6
Switch®	8
Switch® Sport	10
Switch® Cruise Limited	12
Switch® Cruise 18	14
Switch® Cruise 21	16
Comparative Chart	18





Switch® Fish

Fish on! A serious fishing boat that makes no sacrifices on family fun.



Wilderness Green

21' - 300 model shown

Fun for the whole family

CAPACITY	COMPACT	18'-230	21'-230	21'-300
Maximum Person Capacity (US)	5	8	10	
Maximum Person Capacity (Canada)	5	7	9	
Maximum Load Capacity	825 lb/ 375 kg	1,155 lb/ 525 kg	1,485 lb/ 675 kg	
Fuel Capacity	29 gal/ 110 L			46.5 gal/ 176 L
Total Storage Capacity	86.9 gal/ 328.8 L	118.6 gal/ 448.9 L		

HULL

Type	Tri-Hull
Material	Polytec™ - robust and scratch-resistant

INSTRUMENTATION

Main Gauge Type	4.5 in. digital display
Main Functions	Speedometer, clock, fuel consumption instant and average, fuel autonomy distance and time to empty
Driving Mode - iTC Functions	Sport mode, ECO® mode, Slow mode and Cruise Control
Navigation	Garmin® 7" touchscreen GPS
Main Functions	Fish finder, GPS, navigation map, depth finder
Audio System	Accessory BRP Audio System

FEATURES

- iBR - Intelligent Brake & Reverse
- iDF - Intelligent Debris-Free System
- RF D.E.S.S.™ key
- Switch bimini top (18' and 21')
- Clear-view side panels
- Bow fishing doors carpets
- 2 LinQ® Lite rail rod holders (Compact)
- 4 LinQ Lite rail rod holders (18' and 21')
- Driver seat with bolster
- Quick-adjust handlebar
- Glove box with dual USB port
- 12 V outlet
- Retractable boarding ladder
- Ski tow eye
- LinQ attachment points
- Under-deck storage compartment
- Console storage net
- Integrated anchor storage
- LED navigation lights
- LED courtesy light
- Dome and Cargo light (18' and 21')
- 4 integrated cleats
- 650 W battery generator

Ultimate ease of use

Uniquely adaptable to your lifestyle

ROTAX® ENGINE	COMPACT	18'-230	21'-230	21'-300
Engine	1630 ACE™ 170	1630 ACE 230 ECT		1630 ACE 300 ECT
Horsepower	170 hp	230 hp		300 hp
Cooling	Closed Loop Cooling System (CLSC)			
Reverse System	iBR® System (Brake & Reverse System)*			
Fuel Type	Regular Unleaded Gasoline (87 Octane)			Premium Gasoline (91 octane)

DIMENSIONS AND WEIGHT

Estimated Net Weight (oil, coolant, no fuel and no battery)	1,929 lb/ 875 kg	2,529 lb/ 1,147 kg	2,740 lb/ 1,243 kg	2,769 lb/ 1,256 kg
Length	12.8' / 153.9" / 3.9 m	17.4' / 208.8" / 5.3 m	20.4' / 245.2" / 6.2 m	
Width (Beam)	93.5"/2.4 m			
Height (Lowered Bimini)	72.0" / 1.83 m	81.1" / 2.1 m		
Draft**	18.1" / 46 cm	18.3" / 46.5 cm	18.9" / 48 cm	

TRAILER DIMENSIONS AND WEIGHT

Estimated Dry Weight	475 lb/ 215 kg	629 lb/ 285 kg	790 lb/ 358 kg
Length	179" / 4.55 m	227" / 5.76 m	257" / 6.52 m
Width	90.4"/2.3 m		94.2"/2.4 m
Trailer Type	Painted trailer with brakes included / Galvanized trailer with brakes (optional)		Galvanized trailer with brakes included

WARRANTY

3 years factory limited warranty on engine and materials, 10 years on structure and hull.

*Electronic brake, neutral and reverse. **This measurement is valid for the vehicle in static condition with maximum load distributed evenly on the boat.

Layout Configurations

SWITCH FISH COMPACT - 170



SWITCH FISH 18 - 230



SWITCH FISH 21 - 230



SWITCH FISH 21 - 300



Delivering the perfect bridge between fishing convenience features and family leisure.

- **Trolling package:**
 - Garmin¹ Force Kraken 24V, 80-lbs thrust, 57 in. shaft trolling motor with GT56UHD-TR transducer
 - Garmin 7" touchscreen GPS and Fish Finder at the console and at the bow
 - Bow screen mount kit
 - 2 lead-acid batteries, lead/AGM/gel/lithium battery charger
- Washdown and spray nozzle
- Trolling motor storage (18' and 21')
- Swim platform with carpet and LinQ[®] attachment points (18' and 21')
- Storage compartment lock
- BRP Audio System (18' and 21')
- Unique coloration
- 176 L fuel tank (300 hp only)
- 4 corner doors

Feature Highlights



Force Kraken Garmin Trolling Motor

A powerful electric trolling motor that is ready for salt and freshwater that operates whisper-quiet and is loaded with standard features such as various autopilot controls, floating remote, ultra high-definition ClearVü and SideVü scanning sonars, seamless wiring with dedicated electrical port at the bow, robust battery and more.



Dual Garmin Fish Finders

Enjoy two Garmin fish finders, one located at the console connecting with the in-hull transducer, and one located at the bow connecting with the trolling motor transducer. The screens can be linked together wirelessly. This allows both screens to read both transducer signals. So whether you are fishing up front, or at the rear, you can get the fish finder image you want. You can also control the motor using both screens instead of the handheld remote.



Quick-Attach 68 L Livewell and Cooler (18' and 21')

Keep your catch or baits alive thanks to an integrated pump constantly feeding 68L of water into the reservoir. This livewell also comes with a timer option that minimizes its power consumption. It can also be used as a cooler and can be quickly and easily installed on the boat using the quick-attach tiles.



Fishing Pedestal Seats

Height-adjustable with 360 degree rotation. They can be easily moved about the boat from one tile to another with their quick-attach system and its four possible positions on each tile. Compatible with LinQ Lite accessories such as cupholder or the multipurpose bag. (Compact model has 1 pedestal seat)



Quick-Access Rod Storage

Provides an easy and safe solution to store your rods. It accommodates up to four rods and can be locked for added security when leaving the boat.



Powerfull ROTAX 1630 ACE Engine

Proven to be reliable, this jet propulsion system offers an outsized fun-factor with a level of maneuverability never seen on a pontoon boat.¹

¹Actual engine image may vary.

Switch®

The new way to live the Sea-Doo life.
Fun, adaptable and modern
with never-before-seen value.



● Lava Red

16' - 170 model shown

Fun for the whole family

CAPACITY	COMPACT - 130	16' - 170
Maximum Person Capacity (US)	5	8
Maximum Person Capacity (Canada)	5	7
Maximum Load Capacity	825 lb/375 kg	1,155 lb/525 kg
Fuel Capacity	29 gal/110 L	
Total Storage Capacity	109 gal/412.6 L	119.6 gal/452.6 L

HULL

Type	Tri-Hull
Material	Polytec™ - robust and scratch-resistant

INSTRUMENTATION

Main Gauge Type	4.5 in. digital display
Main Functions	Speedometer, clock, fuel consumption instant and average, fuel autonomy distance and time to empty, depth finder
Driving Mode - iTC Functions	Sport mode, ECO® mode, Slow mode and Cruise Control
Navigation	Accessory
Audio System	Accessory

FEATURES

- iBR - Intelligent Brake & Reverse
- iDF - Intelligent Debris-Free System
- RF D.E.S.S.™ key
- Clear-view side panels
- Rear corner doors
- 1 adjustable table
- Glove box with dual USB port
- 12 V outlet
- Retractable boarding ladder
- Ski tow eye
- LinQ® attachment points
- Under-deck storage compartment
- Console storage net
- Integrated anchor storage
- LED navigation lights
- 4 integrated cleats
- 420 W battery generator (Compact)
- 650 W battery generator (16')

Ultimate ease of use

Uniquely adaptable to your lifestyle

ROTAX® ENGINE	COMPACT - 130	16' - 170
Engine	1630 ACE™ 130	1630 ACE 170 ECT
Horsepower	130 hp	170 hp
Cooling	Closed Loop Cooling System (CLSC)	
Reverse System	iBR® System (Brake & Reverse System)*	
Fuel Type	Regular Unleaded Gasoline (87 Octane)	

DIMENSIONS AND WEIGHT

Estimated Net Weight (oil, coolant, no fuel and no battery)	1,674 lb/759 kg	1,974 lb/895 kg
Length	12.8'/153.9 "/3.9 m	15.9'/190.2"/4.8 m
Width (Beam)	93.5"/2.4 m	
Height (Lowered Bimini)	71.9"/1.8m	72.2"/1.8m
Draft**	18.1"/46 cm	18.3"/46.5 cm

TRAILER DIMENSIONS AND WEIGHT

Estimated Dry Weight	475 lb/215 kg	545 lb/247 kg
Length	179"/4.55 m	215"/5.46 m
Width	90.4"/2.3 m	
Trailer Type	Painted trailer included	

WARRANTY

3 years factory limited warranty on engine and materials,
10 years on structure and hull.

*Electronic brake, neutral and reverse. **This measurement is valid for the vehicle in static condition with maximum load distributed evenly on the boat.

Layout Configurations

SWITCH COMPACT - 130



SWITCH 16 - 170



Feature Highlights



Unique Driving Experience

Fun, simple and stress-free handling. Easy to steer and easy to dock with intuitive Sea-Doo handlebar controls. The Tri-Hull design allows for nimble and precise handling, exciting performance and improved stability.¹



Switch Modular Deck

Innovative tile system that allows you to transform the onboard layout in seconds. Its secure and easy-to-use quick-attach tiles offer unparalleled adaptability.



Switch Painted Trailer Included

A high-quality-finish powder-coated trailer is included in the price.



Powerfull ROTAX 1630 ACE Engine

Proven to be reliable, this jet propulsion system offers an outsized fun-factor with a level of maneuverability never seen on a pontoon boat.²



iBR® - The First Braking and Reverse System on a Pontoon

Exclusive to Sea-Doo models, iBR stops the boat sooner and provides more control and maneuverability at low speeds and in reverse.



Cruise Control

Maintain your preferred speed for an extra level of convenience. This option allows you to release your finger from the accelerator for a more enjoyable onboard experience.

¹Garmin GPS not included. ²Actual engine image may vary.

Switch® Sport

Geared toward your active lifestyle with watersports-ready features.



21' - 300 model shown

Neo Mint

Fun for the whole family

CAPACITY	COMPACT	18'-300	21'-300
Maximum Person Capacity (US)	5	8	10
Maximum Person Capacity (Canada)	5	7	9
Maximum Load Capacity	825 lb/375 kg	1,155 lb/525 kg	1,485 lb/675 kg
Fuel Capacity	29 gal/110 L	46.5 gal/176 L	
Total Storage Capacity	144.4 gal/546.6 L	155 gal/586.6 L (Tech Package: 130.1 gal/492.6 L)	165.5 gal/626.6 L (Tech Package: 140.7 gal/532.6 L)

HULL

Type	Tri-Hull
Material	Polytec™ - robust and scratch-resistant

INSTRUMENTATION

Main Gauge Type	4.5 in. digital display (Tech Package: 10.25 in. touchscreen display)
Main Functions	Speedometer, clock, fuel consumption instant and average, fuel autonomy distance and time to empty, depth finder
Driving Mode - iTC Functions	Sport mode, ECO* mode, Slow mode, Ski mode and Cruise Control
Navigation	Accessory Garmin® 7" touchscreen GPS (Accessory on Tech Package)
Audio System	Accessory BRP Audio System (Tech Package: BRP Premium Audio System)

FEATURES

- iBR - Intelligent Brake & Reverse
- iDF - Intelligent Debris-Free System
- RF D.E.S.S.™ key
- Clear-view side panels
- 2 corner tables (Audio tables: Tech Package only)
- Glove box with dual USB port
- 12 V outlet
- Retractable boarding ladder
- Ski tow eye
- Under-deck storage compartment
- Console storage net
- Integrated anchor storage
- LED navigation lights
- LED courtesy light
- 4 integrated cleats
- 420W Battery Generator (Compact only)
- 650 W battery generator (18' and 21')

Ultimate ease of use

Uniquely adaptable to your lifestyle

ROTAX® ENGINE	COMPACT	18'-300	21'-300
Engine	1630 ACE™ 170	1630 ACE 300 ECT	
Horsepower	170 hp	300 hp	
Cooling	Closed Loop Cooling System (CLSC)		
Reverse System	iBR® System (Brake & Reverse System)*		
Fuel Type	Regular Unleaded Gasoline (87 Octane)	Premium Gasoline (91 octane)	

DIMENSIONS AND WEIGHT

Estimated Net Weight (oil, coolant, no fuel and no battery)	1,793 lb/813 kg	2,284 lb/1,036 kg 2,333 lb/1,058 kg (Tech Package)	2,516 lb/1,141 kg 2,562 lb/1,162 kg (Tech Package)
Length	12.8'/153.9"/3.9 m	17.4'/208.8"/5.3 m	20.4'/245.2"/6.2 m
Width (Beam)	93.5"/2.4 m		
Height (Lowered Bimini)	78.1"/2 m	81.1"/2.1 m	
Draft**	18.1"/46 cm	18.3"/46.5 cm	18.9"/48 cm

TRAILER DIMENSIONS AND WEIGHT

Estimated Dry Weight	475 lb/215 kg	629 lb/ 285 kg	740 lb/336 kg
Length	179"/4.55 m	227"/5.76 m	257"/6.52 m
Width	90.4"/2.3 m		92"/2.34 m
Trailer Type	Painted trailer included/ Galvanized trailer (optional)	Painted trailer with brakes included/ Galvanized trailer with brakes (optional)	

WARRANTY

3 years factory limited warranty on engine and materials, 10 years on structure and hull.

*Electronic brake, neutral and reverse. **This measurement is valid for the vehicle in static condition with maximum load distributed evenly on the boat.

Layout Configurations

SWITCH SPORT COMPACT - 170



SWITCH SPORT 18 - 300



SWITCH SPORT 18 - 300 TECH



SWITCH SPORT 21 - 300



SWITCH SPORT 21 - 300 TECH



An extra dose of fun with watersports features

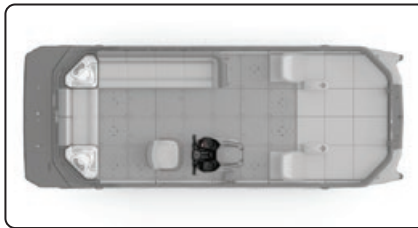
- **Watersports essentials:** inflatable holder, rearview mirror and ski mode
- Driver seat with bolster
- Unique front lounge area with sun pads and backrest
- Stern lounge
- BRP Audio System (optional on compact)
- Switch bimini top
- Garmin 7" touchscreen GPS (18' and 21' without Tech Package only)
- 176 L fuel tank (300 hp only)
- Quick-adjust handlebar (300 hp only)
- **Tech Package** (optional on 18' and 21'): 10.25 in. touchscreen display and BRP Premium Audio System

Feature Highlights



Unique Driving Experience

Fun, simple and stress-free handling. Easy to steer and easy to dock with intuitive Sea-Doo handlebar controls. iBR Intelligent Brake & Reverse stops the boat sooner and improves maneuverability. The Tri-Hull design allows for nimble and precise handling, exciting performance and improved stability.



Tech Package (Optional)

A premium 4-speaker JL Audio system and 10.25 touchscreen display. The 10.25 in. touchscreen display offers a premium design and intuitive interface with marine navigation via the BRP GO! app, music management, software updates via Wi-Fi and more.



Full Swim Platform With LinQ® Attachment Points (18' and 21')

The swim platform with LinQ attachment points and the retractable boarding ladder creates a functional area for swimming and watersports. The carpet adds comfort and convenience.



Powerful ROTAX 1630 ACE Engine

Proven to be reliable, this jet propulsion system offers an outsized fun-factor with a level of maneuverability never seen on a pontoon boat.¹



Watersports-Ready

Equipped with watersports essentials like a quick-attach inflatable holder, rearview mirror and ski-mode that delivers repeatable launches and maintains a consistent pace.



Sun Pads & Backrest

Sit, sprawl out or sunbathe in ultimate comfort at the front of the boat. Enjoy the unique view and proximity to the water.

¹Actual engine image may vary.

Switch® Cruise Limited

Delivering the most refined Switch experience yet.



21' - 300 with optional double bimini top shown

 Harbor Blue

Fun for the whole family

CAPACITY	18' - 300	21' - 300
Maximum Person Capacity (US)	8	10
Maximum Person Capacity (Canada)	7	9
Maximum Load Capacity	1,155 lb/525 kg	1,485 lb/675 kg
Fuel Capacity	46.5 gal/176 L	
Total Storage Capacity	172.4 gal/652.6 L	204.1 gal/772.6 L

HULL

Type	Tri-Hull
Material	Polytec™ - robust and scratch-resistant

INSTRUMENTATION

Main Gauge Type	10.25 in. touchscreen display
Main Functions	Speedometer, clock, fuel consumption instant and average, fuel autonomy distance and time to empty, depth finder
Driving Mode - iTC Functions	Sport mode, ECO® mode, Slow mode and Cruise Control
Navigation	Garmin® 7" touchscreen GPS
Audio System	BRP Premium Audio System

FEATURES

- iBR - Intelligent Brake & Reverse
- iDF - Intelligent Debris-Free System
- RF D.E.S.S.™ key
- Clear-view side panels
- Stern lounge
- 3 corner tables
- 1 adjustable table
- Glove box with dual USB port
- 12 V outlet
- Retractable boarding ladder
- Ski tow eye
- LinQ® attachment points
- Under-deck storage compartment
- Console storage net
- Integrated anchor storage
- LED navigation lights
- LED Courtesy light
- Dome and Cargo light
- 4 integrated cleats
- 650 W battery generator

Ultimate ease of use

Uniquely adaptable to your lifestyle

ROTAX® ENGINE	18' - 300	21' - 300
Engine	1630 ACE™ - 300 ECT	
Horsepower	300 hp	
Cooling	Closed Loop Cooling System (CLSC)	
Reverse System	iBR® System (Brake & Reverse System)*	
Fuel Type	Premium Gasoline (91 octane)	

DIMENSIONS AND WEIGHT

Estimated Net Weight (oil, coolant, no fuel and no battery)	2,461 lb/1,116 kg	2,747 lb/1,246 kg (single bimini) 2,785 lb/1,263 kg (double bimini)
Length	17.4'/208.8"/5.3 m	20.4'/245.2"/6.2 m
Width (Beam)	93.5"/2.4 m	
Height (Lowered Bimini)	82.2"/2.1 m	
Draft**	18.3"/46.5 cm	18.9"/48 cm

TRAILER DIMENSIONS AND WEIGHT

Estimated Dry Weight	629 lb/285 kg	790 lb/358 kg
Length	227"/5.76 m	257"/6.52 m
Width	90.4"/2.3 m	94.2"/2.4 m
Trailer Type	Painted trailer with brakes included / Galvanized trailer with brakes (optional)	Galvanized trailer with brakes included

WARRANTY

3 years factory limited warranty on engine and materials, 10 years on structure and hull.

*Electronic brake, neutral and reverse. **This measurement is valid for the vehicle in static condition with maximum load distributed evenly on the boat.

Layout Configurations

SWITCH CRUISE LIMITED 18-300



SWITCH CRUISE LIMITED 21 - 300



Elevated refinement for unforgettable days on the water

- **Limited Package:** unique badging and trims, exclusive coloration, additional seating, interior lighting and speed ties
- Premium captain's chair with adjustable ergonomics
- Bimini top with gas springs
- Quick-adjust handlebar
- Garmin 7" touchscreen GPS
- Swim platform with carpet and LinQ attachment points
- Deck mats
- 176 L fuel tank
- 10.25 in. touchscreen display
- BRP Premium Audio System
- Double Bimini top (optional on the 21')

Feature Highlights



BRP Premium Audio System

A premium 6-speaker JL Audio system that transforms the ride into a floating music festival. Includes 3 corner tables with 2 speakers each as well as two amplifiers and one subwoofer for an immersive 360-degree experience.



Limited Package

The Switch Cruise Limited offers premium features such as interior lighting, additional seating, speed ties, an upgraded captain's chair, exclusive coloration and unique trims and badging.



Optimized Stern Experience

Easily get on and off your boat from the swim platform thanks to the two new rear corner doors. For an extra dose of fun, the swim platform with the retractable boarding ladder creates a functional area for swimming and watersports.



Double Bimini Top with Gas Springs (Optional on the 21')

A double bimini that provides a covered bow seating area for updated comfort. The gas springs make the bimini top deployment and storage a breeze. Two sunroof zip panels allow the sun to light up the boat if desired when on the water.



10.25" Touchscreen Display

Premium design and intuitive interface with marine navigation via BRP GO! app, music management, software updates via Wi-Fi and more.



Powerfull ROTAX 1630 ACE - 300 hp Engine

The most powerful engine in the Switch family. Combined with a new tank offering 60% more fuel capacity, it leaves no room for compromise when it comes to riding time and peace of mind.

Switch® Cruise 18

Taking your on-water journey with friends and family to a new level of comfort and convenience.



18' - 230 model shown

Neo Mint

Marine Blue

Fun for the whole family

CAPACITY	18'-170	18'-230	18'-230 TECH
Maximum Person Capacity (US)	8	8	8
Maximum Person Capacity (Canada)	7	7	7
Maximum Load Capacity	1,155 lb/525 kg		
Fuel Capacity	29 gal/110 L		
Total Storage Capacity	199.1 gal/753.6L		174.2 gal/659.6 L

HULL

Type	Tri-Hull
Material	Polytec™ - robust and scratch-resistant

INSTRUMENTATION

Main Gauge Type	4.5 in. digital display	10.25 in. touchscreen display
Main Functions	Speedometer, clock, fuel consumption instant and average, fuel autonomy distance and time to empty, depth finder	
Driving Mode - iTC Functions	Sport mode, ECO* mode, Slow mode and Cruise Control	
Navigation	Accessory	Garmin® 7" touchscreen GPS
Audio System	BRP Audio System	BRP Premium Audio System

FEATURES

- iBR - Intelligent Brake & Reverse
- iDF - Intelligent Debris-Free System
- RF D.E.S.S.™ key
- Clear-view side panels
- 3 corner tables
- 1 adjustable table
- Glove box with dual USB port
- 12 V outlet
- Stern lounge
- Retractable boarding ladder
- Ski tow eye
- Under-deck storage compartment
- Console storage net
- Integrated anchor storage
- LED navigation lights
- LED courtesy light
- 4 integrated cleats
- 650 W battery generator

Ultimate ease of use

Uniquely adaptable to your lifestyle

ROTAX® ENGINE	18'-170	18'-230	18'-230 TECH
Engine	1630 ACE™ 170 ECT	1630 ACE 230 ECT	
Horsepower	170 hp	230 hp	
Cooling	Closed Loop Cooling System (CLSC)		
Reverse System	iBR® System (Brake & Reverse System)*		
Fuel Type	Regular Unleaded Gasoline (87 Octane)		

DIMENSIONS AND WEIGHT

Estimated Net Weight (oil, coolant, no fuel and no battery)	2,295 lb 1,041 kg	2,320 lb 1,052 kg	2,373 lb 1,076 kg
Length	17.4'/208.8"/5.3 m		
Width (Beam)	93.5"/2.4 m		
Height (Lowered Bimini)	81.1"/2.1 m		
Draft**	18.3"/46.5 cm		

TRAILER DIMENSIONS AND WEIGHT

Estimated Dry Weight	629 lb/285 kg
Length	227"/5.76 m
Width	90.4"/2.3 m
Trailer Type	Painted trailer with brakes included / Galvanized trailer with brakes (optional)

WARRANTY

3 years factory limited warranty on engine and materials, 10 years on structure and hull.

*Electronic brake, neutral and reverse. **This measurement is valid for the vehicle in static condition with maximum load distributed evenly on the boat.

Layout Configurations

SWITCH CRUISE 18 - 170



SWITCH CRUISE 18 - 230



SWITCH CRUISE 18 - 230 TECH



Added comfort & convenience

- Extra seating and storage
- Driver seat with bolster
- Deck mats
- Swim platform with carpet and LinQ® attachment points
- BRP Audio System
- Garmin 7" touchscreen GPS (18' 230 only - Not included on Tech Package)
- Rear corner doors
- Quick-adjust handlebar (230 hp only)
- **Tech Package** (optional on the 18' 230): 10.25" touchscreen display and BRP Premium Audio System

Feature Highlights



Unique Driving Experience

Fun, simple and stress-free handling. Easy to steer and easy to dock with intuitive Sea-Doo handlebar controls. iBR Intelligent Brake & Reverse stops the boat sooner and improves maneuverability. The Tri-Hull design allows for nimble and precise handling, exciting performance and improved stability.



Switch Painted Trailer Included

A high-quality-finish powder-coated trailer is included in the price. Galvanized trailer finish is optional.



Switch Bimini Top

Sturdy, lightweight aluminum frame and high-grade marine canvas offer essential protection from the elements. Can be raised and lowered in seconds!¹



Optimized Stern Experience

Easily get on and off your boat from the swim platform thanks to the two new rear corner doors. For an extra dose of fun, the swim platform with the retractable boarding ladder creates a functional area for swimming and watersports.



Powerful ROTAX 1630 ACE Engine

Proven to be reliable, this jet propulsion system offers an outsized fun-factor with a level of maneuverability never seen on a pontoon boat.¹



Tech Package (Optional)

A premium 4-speaker JL Audio system and 10.25 touchscreen display. The 10.25 touchscreen display offers a premium design and intuitive interface with marine navigation via the BRP GO! app, music management, software updates via Wi-Fi and more.

¹Switch Cruise 21' Tech model shown. ²Actual engine image may vary.

Switch® Cruise 21

Taking your on-water journey with friends and family to a new level of comfort and convenience.



21' - 230 model shown

Neo Mint

Marine Blue

Fun for the whole family

CAPACITY	21' - 230	21' - 300 TECH
Maximum Person Capacity (US)	10	10
Maximum Person Capacity (Canada)	9	9
Maximum Load Capacity	1,485 lb/675 kg	
Fuel Capacity	29 gal/110 L	46.5 gal/176 L
Total Storage Capacity	230.8 gal/873.6 L	205.9 gal/779.6 L

HULL

Type	Tri-Hull
Material	Polytec™ - robust and scratch-resistant

INSTRUMENTATION

Main Gauge Type	4.5 in. digital display	10.25 in. touchscreen display
Main Functions	Speedometer, clock, fuel consumption instant and average, fuel autonomy distance and time to empty, depth finder	
Driving Mode - iTC Functions	Sport mode, ECO® mode, Slow mode and Cruise Control	
Navigation	Garmin® 7 in. touchscreen GPS	Accessory
Audio System	BRP Audio System	BRP Premium Audio System

FEATURES

- iBR - Intelligent Brake & Reverse
- iDF - Intelligent Debris-Free System
- RF D.E.S.S.™ key
- Clear-view side panels
- 3 corner tables
- 1 adjustable table
- Glove box with dual USB port
- 12 V outlet
- Stern lounge
- Retractable boarding ladder
- Ski tow eye
- Under-deck storage compartment
- Console storage net
- Integrated anchor storage
- LED navigation lights
- LED courtesy light
- 4 integrated cleats
- 650 W battery generator

Ultimate ease of use

Uniquely adaptable to your lifestyle

ROTAX® ENGINE	21' - 230	21' - 300 TECH
Engine	1630 ACE™ - 230 ECT	1630 ACE - 300 ECT
Horsepower	230 hp	300 hp
Cooling	Closed Loop Cooling System (CLSC)	
Reverse System	iBR® System (Brake & Reverse System)*	
Fuel Type	Regular Unleaded Gasoline (87 Octane)	Premium Gasoline (91 octane)

DIMENSIONS AND WEIGHT

Estimated Net Weight (oil, coolant, no fuel and no battery)	2,609 lb/1,183 kg	2,675 lb/1,213 kg
Length	20.4'/245.2"/6.2 m	
Width (Beam)	93.5"/2.4 m	
Height (Lowered Bimini)	81.1"/2.1 m	
Draft**	18.9"/48 cm	

TRAILER DIMENSIONS AND WEIGHT

Estimated Dry Weight	740 lb/336 kg
Length	257"/6.52 m
Width	92"/2.34 m
Trailer Type	Painted trailer with brakes included / Galvanized trailer with brakes (optional)

WARRANTY

3 years factory limited warranty on engine and materials, 10 years on structure and hull.

*Electronic brake, neutral and reverse. **This measurement is valid for the vehicle in static condition with maximum load distributed evenly on the boat.

Layout Configurations

SWITCH CRUISE 21 - 230



SWITCH CRUISE 21 - 300 TECH



Added comfort & convenience

- Extra seating and storage
- Driver seat with bolster
- Deck mats
- Swim platform with carpet and LinQ® attachment points
- BRP Audio System
- Garmin 7" touchscreen GPS (230 only)
- Rear corner doors
- Quick-adjust handlebar
- 176 L fuel tank (300 hp only)
- **Tech Package** (21' 300 only): 10.25" touchscreen display and BRP Premium Audio System

Feature Highlights



Unique Driving Experience

Fun, simple and stress-free handling. Easy to steer and easy to dock with intuitive Sea-Doo handlebar controls. iBR Intelligent Brake & Reverse stops the boat sooner and improves maneuverability. The Tri-Hull design allows for nimble and precise handling, exciting performance and improved stability.



Switch Painted Trailer Included

A high-quality-finish powder-coated trailer is included in the price. Galvanized trailer finish is optional.



Switch Bimini Top

Sturdy, lightweight aluminum frame and high-grade marine canvas offer essential protection from the elements. Can be raised and lowered in seconds.



Optimized Stern Experience

Easily get on and off your boat from the swim platform thanks to the two new rear corner doors. For an extra dose of fun, the swim platform with the retractable boarding ladder creates a functional area for swimming and watersports.



Powerful ROTAX® 1630 ACE™ Engine

Proven to be reliable, this jet propulsion system offers an outsized fun-factor with a level of maneuverability never seen on a pontoon boat.¹



Tech Package (21' - 300 hp)

A premium 4-speaker JL Audio system and 10.25 touchscreen display. The 10.25 touchscreen display offers a premium design and intuitive interface with marine navigation via the BRP GO! app, music management, software updates via Wi-Fi and more.

¹Actual engine image may vary.

Comparative Chart

		Switch Fish				Switch	
		Fish on! A serious fishing boat that makes no sacrifices on family fun.				The new way to live the Sea-Doo life. Fun, adaptable and modern with never-before-seen value.	
Models	COMPACT - 170		18' - 230 ECT	21' - 230 ECT	21'- 300 ECT	COMPACT - 130	16' - 170 ECT
Colors	Wilderness Green					Lava Red	
Package highlights							
Delivering the perfect bridge between fishing convenience features and family leisure.						<ul style="list-style-type: none">• Fun for the whole family• Ultimate ease of use• Uniquely adaptable to your lifestyle	
<ul style="list-style-type: none">• Trolling package:<ul style="list-style-type: none">- Garmin® Force Kraken 24V, 80-lbs thrust, 57 in. shaft trolling motor with GT56UHD-TR transducer- Garmin 7" touchscreen GPS and Fish Finder at the console and at the bow- Bow screen mount kit- 2 lead-acid batteries, lead/AGM/gel/lithium battery charger• Washdown and spray nozzle• Trolling motor storage (18' and 21')• Swim platform with carpet and LinQ® attachment points (18' and 21')• Storage compartment lock• BRP Audio System (18' and 21')• Unique coloration• 176 L fuel tank (300 hp only)• 4 corner doors							
Capacity							
Maximum Person Capacity (US)	5	8	10		5	8	
Maximum Person Capacity (Canada)	5	7	9		5	7	
Maximum Load Capacity	825 lb/375 kg	1,155 lb/525 kg	1,485 lb/675 kg		825 lb/375 kg	1,155 lb/525 kg	
Fuel Capacity	29 gal/110 L				46.5 gal/176 L	29 gal/110 L	
Total Storage Capacity	86.9 gal/328.8 L	118.6 gal/448.9 L			109 gal/412.6 L	119.6 gal/452.6 L	
Rotax engine							
Rotax Engine	1630 ACE - 170 hp	1630 ACE - 230 hp		1630 ACE - 300 hp	1630 ACE - 130 hp	1630 ACE - 170 hp	
Cooling	Closed Loop Cooling System (CLSC)				Closed Loop Cooling System (CLSC)		
Reverse System	iBR® System (Brake & Reverse System)				iBR® System (Brake & Reverse System)		
Fuel Type	Regular Unleaded Gasoline (87 Octane)			Premium Gasoline (91 octane)	Regular Unleaded Gasoline (87 Octane)		
Dimensions and weight							
Estimated Net Weight	1,929 lb/875 kg	2,529 lb/1,147 kg	2,740 lb/1,243 kg	2,769 lb/1,256 kg	1,674 lb/759 kg	1,974 lb/895 kg	
Length	12.8'/153.9"/3.9 m	17.4'/208.8"/5.3 m	20.4'/245.2"/6.2 m		12.8'/153.9 "/3.9 m	15.9'/190.2"/4.8 m	
Width	93.5"/2.4 m				93.5"/2.4 m		
Height	72.0"/1.83 m	81.1"/2.1 m			71.9"/1.8m	72.2"/1.8m	
Draft	18.1"/46 cm	18.3"/46.5 cm	18.9"/48 cm		18.1"/46 cm	18.3"/46.5 cm	
Trailer dimensions and weight							
Estimated Dry Weight	475 lb/215 kg	629 lb/ 285 kg	790 lb/358 kg		475 lb/215 kg	545 lb/247 kg	
Length	179"/4.55 m	227"/5.76 m	257"/6.52 m		179"/4.55 m	215"/5.46 m	
Width	90.4"/2.3 m		94.2"/2.4 m		90.4"/2.3 m		
Trailer Type	Painted trailer with brakes included / Galvanized trailer with brakes (optional)		Galvanized trailer with brakes included		Painted trailer included		

	Switch Sport			Switch Cruise Limited		
	Geared toward your active lifestyle with watersports-ready features.			Delivering the most refined Switch experience yet.		
	Models	COMPACT - 170	18'- 300 ECT	21'- 300 ECT	18'- 300 ECT	21'- 300 ECT
Colors	Neo Mint			Harbor Blue		
Package highlights						
	An extra dose of fun with watersports features <ul style="list-style-type: none">• Watersports essentials: inflatable holder, rearview mirror and ski mode• Driver seat with bolster• Unique front lounge area with sun pads and backrest• Stern lounge• BRP Audio System (optional on compact)• Switch bimini top• Garmin 7" touchscreen GPS (18' and 21' without Tech Package only)• 176 L fuel tank (300 hp only)• Quick-adjust handlebar (300 hp only)• Tech Package (optional on 18' and 21'): 10.25 in. touchscreen display and BRP Premium Audio System			Elevated refinement for unforgettable days on the water <ul style="list-style-type: none">• Limited Package: unique badging and trims, exclusive coloration, additional seating, interior lighting and speed ties• Premium captain's chair with adjustable ergonomics• Bimini top with gas springs• Quick-adjust handlebar• Garmin 7" touchscreen GPS• Swim platform with carpet and LinQ attachment points• Deck mats• 176 L fuel tank• 10.25 in. touchscreen display• BRP Premium Audio System• Double Bimini top (optional on the 21')		
	Capacity					
Maximum Person Capacity (US)	5	8	10	8	10	
Maximum Person Capacity (Canada)	5	7	9	7	9	
Maximum Load Capacity	825 lb/375 kg	1,155 lb/525 kg	1,485 lb/675 kg	1,155 lb/525 kg	1,485 lb/675 kg	
Fuel Capacity	29 gal/110 L	46.5 gal/176 L		46.5 gal/176 L		
Total Storage Capacity	144.4 gal/546.6 L	155 gal/586.6 L (Tech Package: 130.1 gal/492.6 L)	165.5 gal/626.6 L (Tech Package: 140.7 gal/532.6 L)	172.4 gal/652.6 L	204.1 gal/772.6 L	
Rotax engine						
Rotax Engine	1630 ACE - 170 hp	1630 ACE - 300 hp		1630 ACE - 300 hp		
Cooling	Closed Loop Cooling System (CLSC)			Closed Loop Cooling System (CLSC)		
Reverse System	iBR® System (Brake & Reverse System)			iBR® System (Brake & Reverse System)		
Fuel Type	Regular Unleaded Gasoline (87 Octane)	Premium Gasoline (91 octane)		Premium Gasoline (91 octane)		
Dimensions and weight						
Estimated Net Weight	1,793 lb/813 kg	2,284 lb/1,036 kg 2,333 lb/1,058 kg (Tech Package)	2,516 lb/1,141 kg 2,562 lb/1,162 kg (Tech Package)	2,461 lb/1,116 kg	2,747 lb/1,246 kg (single bimini) 2,785 lb/1,263 kg (double bimini)	
Length	12.8'/153.9"/3.9 m	17.4'/208.8"/5.3 m	20.4'/245.2"/6.2 m	17.4'/208.8"/5.3 m	20.4'/245.2"/6.2 m	
Width	93.5"/2.4 m			93.5"/2.4 m		
Height	78.1"/2 m	81.1"/2.1 m		82.2"/2.1 m		
Draft	18.1"/46 cm	18.3"/46.5 cm	18.9"/48 cm	18.3"/46.5 cm	18.9"/48 cm	
Trailer dimensions and weight						
Estimated Dry Weight	475 lb/215 kg	629 lb/ 285 kg	740 lb/336 kg	629 lb/285 kg	790 lb/358 kg	
Length	179"/4.55 m	227"/5.76 m	257"/6.52 m	227"/5.76 m	257"/6.52 m	
Width	90.4"/2.3 m		92"/2.34 m	90.4"/2.3 m	94.2"/2.4 m	
Trailer Type	Painted trailer included/ Galvanized trailer (optional)	Painted trailer with brakes included/ Galvanized trailer with brakes (optional)		Painted trailer with brakes included / Galvanized trailer with brakes (optional)	Galvanized trailer with brakes included	

Comparative Chart

		Switch Cruise 18		Switch Cruise 21	
Taking your on-water journey with friends and family to a new level of comfort and convenience.					
Models	18'- 170 ECT	18'- 230 ECT	18'- 230 ECT TECH	21'- 230 ECT	21'- 300 ECT TECH
Colors		Neo Mint Marine Blue		Neo Mint Marine Blue	
Package highlights					
Added comfort & convenience <ul style="list-style-type: none">• Extra seating and storage• Driver seat with bolster• Deck mats• Swim platform with carpet and LinQ® attachment points• BRP Audio System• Garmin 7" touchscreen GPS (18' 230 only - Not included on Tech Package)• Rear corner doors• Quick-adjust handlebar (230 hp only)• Tech Package (optional on the 18' 230): 10.25" touchscreen display and BRP Premium Audio System			Added comfort & convenience <ul style="list-style-type: none">• Extra seating and storage• Driver seat with bolster• Deck mats• Swim platform with carpet and LinQ® attachment points• BRP Audio System• Garmin 7" touchscreen GPS (230 only)• Rear corner doors• Quick-adjust handlebar• 176 L fuel tank (300 hp only)• Tech Package (21' 300 only): 10.25" touchscreen display and BRP Premium Audio System		
Capacity					
Maximum Person Capacity (US)	8			10	
Maximum Person Capacity (Canada)	7			9	
Maximum Load Capacity	1,155 lb/525 kg			1,485 lb/675 kg	
Fuel Capacity	29 gal/110 L			29 gal/110 L	46.5 gal/176 L
Total Storage Capacity	199.1 gal/753.6L		174.2 gal /659.6 L	230.8 gal/873.6 L	205.9 gal/779.6 L
Rotax engine					
Rotax Engine	1630 ACE - 170 hp	1630 ACE - 230 hp		1630 ACE - 230 hp	1630 ACE - 300 hp
Cooling	Closed Loop Cooling System (CLSC)			Closed Loop Cooling System (CLSC)	
Reverse System	iBR® System (Brake & Reverse System)			iBR® System (Brake & Reverse System)*	
Fuel Type	Regular Unleaded Gasoline (87 Octane)			Regular Unleaded Gasoline (87 Octane)	Premium Gasoline (91 octane)
Dimensions and weight					
Estimated Net Weight	2,295 lb/1,041 kg	2,320 lb/1,052 kg	2,373 lb/1,076 kg	2,609 lb/1,183 kg	2,675 lb/1,213 kg
Length	17.4'/208.8"/5.3 m			20.4'/245.2"/6.2 m	
Width	93.5"/2.4 m			93.5"/2.4 m	
Height	81.1"/2.1 m			81.1"/2.1 m	
Draft	18.3"/46.5 cm			18.9"/48 cm	
Trailer dimensions and weight					
Estimated Dry Weight	629 lb/285 kg			740 lb/336 kg	
Length	227"/5.76 m			257"/6.52 m	
Width	90.4"/2.3 m			92"/2.34 m	
Trailer Type	Painted trailer with brakes included / Galvanized trailer with brakes (optional)			Painted trailer with brakes included / Galvanized trailer with brakes (optional)	



Accessories

Accessories

Bundles	23
Covers	27
LinQ Accessory Positions	28
LinQ Cooler Guide	30
LinQ, Storage and Bags	32
Fishing Accessories	38
Biminis, Camper Enclosure and Tops	39
Audio, Electronics & Electrical	42
Flooring Accessories	45
Furniture & Seating	46
Watersport Accessories	48
Docking & Anchoring	50
Boating Essentials	51
Add a Splash of Color	52



Bundles



ESSENTIAL

SKU	NAME	PAGE	PRICE
295100330	Safety Equipment Kit	p. 51	\$30.99
295100833	Fire Extinguisher	p. 51	\$49.99
295100825	Mooring Rope	p. 50	\$30.99
295101192	Paddle	p. 51	\$134.99
295100631	Registration Kit	p. 45	\$50.99
295100821	Anchor Kit	p. 50	\$359.99
278003401	RF Programmable D.E.S.S.™ Key	p. 51	\$114.99
Total			\$772.93

DOCKING

SKU	NAME	PAGE	PRICE
295101277	LinQ Lite Fender Kit	p. 50	\$249.99
295101083	Front Docking Lights	p. 43	\$389.99
295101327	Rear Underwater Lights	p. 43	\$469.99
295100778	Speed Tie	p. 50	\$599.99
295101197	Modular Step	p. 36	\$204.99
Total			\$1,914.95

TRAILERING

SKU	NAME	PAGE	PRICE
295101136	Bimini Top Sleeve	p. 39	\$154.99
295101240	Mooring and Trailering Cover	p. 27	\$1,319.99
295100782	Front Trailering Cover	p. 27	\$359.99
Total			\$1,834.97

Note that some accessories may come standard on some models, that compatibility could change depending on the vehicle and part numbers may vary depending on models. Prices don't include installation requirements.



CARGO

SKU	NAME	PAGE	PRICE
295100985	LinQ Lite 2.6 US gal (10 L) Console Bag	p. 33	\$254.99
295101193	Driver Seat Storage	p. 33	\$104.99
295101247	LinQ 8.5 US gal (32 L) Insulated Tote Bag	p. 32	\$269.99
295100977	LinQ Lite Multi Holder	p. 35	\$41.99
295101079	LinQ Lite Stemware Holder	p. 33	\$64.99
295101089	LinQ Lite 8.5 US gal (32 L) Ventilated Bag	p. 34	\$259.99
715009406	LinQ Lite Cup Holder	p. 33	\$45.99
715009276	LinQ 11.4 US gal (43 L) Cooler	p. 32	\$789.99
295101276	LinQ Lite Holder for Rail	p. 36	\$67.99
715006830	LinQ 7.8 US gal (30 L) Modular Cargo Box	p. 34	\$239.99
715007822	LinQ 5 US gal (20 L) Fuel Caddy	p. 31	\$249.99
295100931	LinQ Vertical Support	p. 36	\$259.99
Total			\$2,650.88

Note that some accessories may come standard on some models, that compatibility could change depending on the vehicle and part numbers may vary depending on models. Prices don't include installation requirements.



WATERSPORT

SKU	NAME	PAGE	PRICE
295100971	Wake and Ski Pylon	p. 42	\$979.99
295100932	Wakeboard Holder	p. 42	\$389.99
295100777	Rearview Mirror	p. 42	\$234.99
295101468	Swim Platform	p. 43	\$2,269.99
295101050	Quick Attach Inflatable Holder	p. 43	\$269.99
295100662	Shock Tube	p. 43	\$32.99
		Total	\$4,177.94

COMFORT

SKU	NAME	PAGE	PRICE
295100962	Double Bimini Top	p. 34	\$2,499.99
295101339	Deck Mat	p. 40	\$779.99
295101048	Light Pole Extension	p. 34	\$299.99
		Total	\$3,579.97



AUDIO

SKU	NAME	PAGE	PRICE
295101421	Two JL Audio System Tables	p. 42	\$6,179.99
295101215	JL Audio Harness Adaptor	p. 42	\$519.99
295101214	Fourth JL Audio System Table	p. 42	\$2,989.99
		Total	\$9,689.97

Note that some accessories may come standard on some models, that compatibility could change depending on the vehicle and part numbers may vary depending on models. Prices don't include installation requirements.



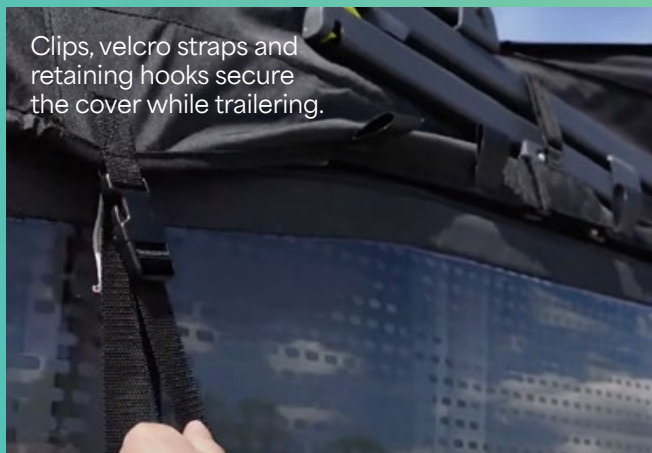
FISHING

SKU	NAME	PAGE	PRICE
295101154	LinQ Lite Multipurpose Bag	p. 38	\$134.99
715007112	LinQ 5.2 US gal (20 L) Modular Cargo Box	p. 34	\$219.99
295101324	Quick-Access Rod Storage	p. 38	\$269.99
295101308	Rail Rod Holder with LinQ Lite	p. 38	\$134.99
295101304	Quick-Attach 18 US gal (68 L) Cooler	p. 32	\$1,139.99
295101344	Livewell Conversion Kit for Quick-Attach 18 US gal (68 L) Cooler	p. 33	\$309.99
295101305	Livewell Conversion Kit for Switch	p. 32	\$649.99
295101306	Quick-Attach Fishing Pedestal Seat	p. 38	\$1,339.99
295101242	Garmin® ECHOMAPTM UHD2 72sv GPS	p. 43	\$1,549.99
295100972	Fish Finder and Depth Finder Garmin® GT15M-IH Transducer	p. 43	\$419.99
295101482	Double Battery Kit with Battery Charger	p. 44	\$1,079.99
Total			\$7,249.89

Covers

Key Features

- Heavy-duty, UV-resistant polyester canvas cover keeps Switch interior dry and protected.
- Open door design helps air circulation while trailering and prevents water from pooling on the cover.
- Innovative clip system makes for easy, fast installation, and allows LinQ Lite accessories to remain attached to the rails while the cover is in use.
- Rear air vents allow for increased air circulation.



Clips, velcro straps and retaining hooks secure the cover while trailering.

Zippered openings allow easy access.



Covers



Console Cover

All Switch models
295101195 **\$239.99**

- Weather-resistant cover protects your console during storage and transportation.
- Made of heavy-duty UV-resistant solution-dyed polyester canvas.
- Soft inner lining prevents panel abrasion.
- Yellow fabric indicates handlebar position.
- Zippered openings allow easy access to the small storage.
- Perfect fit for your console, with or without installed Garmin GPS.



Captain Seat Cover

All seats without armrest
295101250 without armrests **\$154.99**

All seats with armrest
295101194 with armrests **\$154.99**

- Weather-resistant cover protects your driver seat during storage and transportation.
- Made of heavy-duty UV-resistant solution-dyed polyester canvas with 2 vents.
- A logo indicates backrest top position for ease of installation.
- A perfect fit for your driver seat without armrests.



Front Trawling Cover

All Switch models
295100782 **\$359.99**

- Protects front hull and panels from dirt, insects and other debris while trailering.
- Simple installation by attaching to trailer and Switch mooring cleats.
- Provides full watercraft coverage when paired with Switch Mooring Cover while trailering.
- Polyurethane coating makes cleaning fast and easy.



Mooring and Trawling Cover

Switch Compact
295101067 **\$989.99**

NEW Switch 16'
295101234 **\$1,189.99**

Switch 19'
295101068 **\$1,269.99**

Switch Sport Compact
295101005 **\$989.99**

NEW Switch Sport 18'
295101237 **\$1,189.99**

NEW Switch Sport 21'
295101238 **\$1,319.99**

NEW Switch Cruise 18'
295101239 **\$1,189.99**

NEW Switch Cruise 21'
295101240 **\$1,319.99**

- Heavy-duty, UV-resistant polyester canvas mooring cover keeps Switch interior dry and protected.
- Innovative clip system makes for easy, fast installation, and allows LinQ Lite accessories to remain attached to the rails while cover is in use.
- Interior pole system keeps cover elevated and prevents water pooling on the cover.
- Air vents at the rear allow increased air circulation.
- Compatible with Switch Bimini tops on Cruise and Sport models.
- Includes everything needed for immediate use.

LinQ Accessory Positions

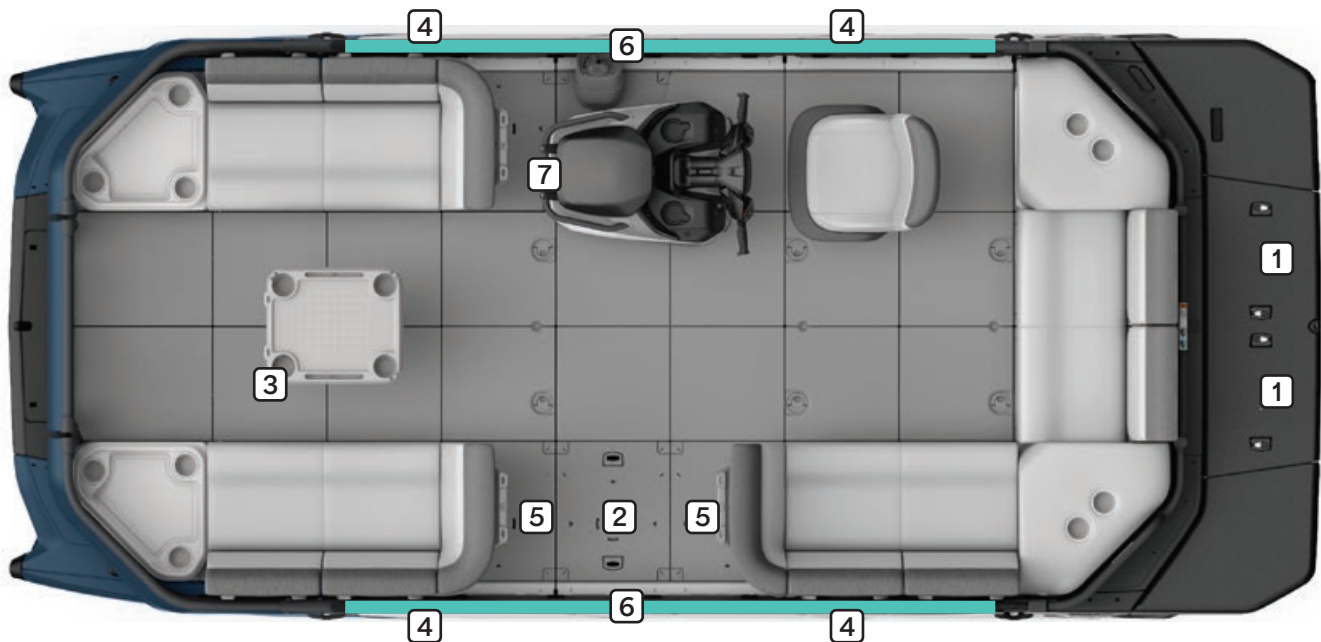


Fast, easy and secure.

A BRP exclusive, LinQ is a toolless system for near-instant installation of accessories.

- No tools needed: quickly install and remove accessories by hand
- Stylish, fully integrated solution to your cargo needs
- Sturdy mounting system that holds up even in bumpy conditions

There are so many different ways to customize the layout of your Switch to make it your own. Here's how you can use multiple LinQ accessories together to create the perfect ride.



Note that some accessories may come standard on some models, that compatibility could change depending on the vehicle and part numbers may vary depending on models. Prices don't include installation requirements.

LINQ ACCESSORY

SKU	NAME	POSITION 1	POSITION 2	POSITION 3	POSITION 4	POSITION 5	POSITION 6	POSITION 7
295101252	LinQ 5.3 US gal (20 L) Semi-Rigid Cooler	yes	yes	no	no	no	no	no
295101247	LinQ 8.5 US gal (32 L) Insulated Tote Bag	yes	yes	no	no	no	no	no
295101257	LinQ 5.3 US gal (20 L) Cooler	yes	yes	no	no	no	no	no
715009276	LinQ 11.4 US gal (43 L) Cooler	yes	yes	no	no	no	no	no
715009406	LinQ Lite Cup Holder	no	no	yes	no	yes May require LinQ Lite Holder for Corner Backrest (295101044)	yes Requires LinQ Lite Holder for Rail (295101276)	yes Requires LinQ Lite Multi Holder (295100977)
295101079	LinQ Lite Stemware Holder	no	no	yes	no	yes May require LinQ Lite Holder for Corner Backrest (295101044)	yes Requires LinQ Lite Holder for Rail (295101276)	yes Requires LinQ Lite Multi Holder (295100977)
295100985	LinQ Lite Console Bag	no	no	yes	no	yes May require LinQ Lite Holder for Corner Backrest (295101044)	yes Requires LinQ Lite Holder for Rail (295101276)	yes Requires LinQ Lite Multi Holder (295100977)
295100986	LinQ Lite 7.8 US gal (30 L) Canvas Bag	no	no	yes	no	yes May require LinQ Lite Holder for Corner Backrest (295101044)	yes Requires LinQ Lite Holder for Rail (295101276)	no
295101089	LinQ Lite 8.5 US gal (32 L) Ventilated Bag	no	no	yes	no	yes May require LinQ Lite Holder for Corner Backrest (295101044)	yes Requires LinQ Lite Holder for Rail (295101276)	no
715008110	LinQ 10.6 US gal (40 L) Roll-Top Bag	yes	yes	no	yes Requires LinQ Vertical Support (295100931)	no	no	no
715005494	LinQ 2.6 US gal (10 L) Modular Cargo Box	yes	yes	no	no	no	no	no
715007112	LinQ 5.2 US gal (20 L) Modular Cargo Box	yes	yes	no	no	no	no	no
715006830	LinQ 7.8 US gal (30 L) Modular Cargo Box	yes	yes	no	no	no	no	no
295100950	LinQ 3.8 US gal (14.5 L) Stackable Fuel Caddy	yes	no	no	yes Requires LinQ Vertical Support (295100931)	no	no	no
715007822	LinQ 5 US gal (20 L) Fuel Caddy	yes	no	no	yes Requires LinQ Vertical Support (295100931)	no	no	no
295100931	LinQ Vertical Support	no	no	no	yes	no	no	no
295101154	LinQ Lite Multipurpose Bag	no	no	no	no	yes May require LinQ Lite Holder for Corner Backrest (295101044)	yes Requires LinQ Lite Holder for Rail (295101276)	no
295101308	Rail Rod Holder with LinQ Lite	no	no	no	no	no	yes	no
295101277	LinQ Lite Fenders Kit	no	no	no	no	no	yes	no



LinQ Cooler Guide

Add some thrills with LinQ

Having fun on the water has never been easier with LinQ. Take everything you need with you to spend a perfect day on the water with a wide range of Sea-Doo LinQ accessories. Find the storage box, bag, rack or cooler to fit your needs and make your watercraft unstoppable!



LinQ, Storage and Bags



LinQ 5.3 US gal (20 L) Semi-Rigid Cooler

All Switch models

295101252

\$339.99

- 5.3 US gal (20 L) of insulated, water-resistant capacity.
- Quick, easy and secure LinQ system installation.
- Attaches with one set of LinQ Fasteners.
- Single day use soft cooler.
- Mesh pocket on top of the lid.
- Zippered pocket under the lid for quick and easy access.
- Removable interior for easy cleaning.
- Carry handles for easy transport to and from the water.
- Can contain twelve 355 ml cans.
- Dimensions: 19" L x 13" W x 10" H.



LinQ 8.5 US gal (32 L) Insulated Tote Bag

All Switch models

295101247

\$269.99

- 8.5 US gal (32 L) of thermal insulated, soft-sided storage.
- Quick, easy and secure LinQ system installation.
- Single day use soft cooler.
- Water-resistant construction.
- Robust outer material for durability with a modern look.
- Carry handles and removable shoulder strap for easy transport to and from the water.
- Featuring inside pockets, zipped pockets and adjustable carry straps on each side to store a towel.
- Collapsible if not fully packed with straps on both sides.
- Can contain eighteen 355 ml cans.
- Dimensions: 15.5" L x 8" W x 18.5" H.



LinQ 5.3 US gal (20 L) Cooler

All Switch models

295101257

\$539.99

- LinQ-mounted for fast, easy and secure storage.
- Locks in place with just a quarter turn.
- High-quality insulation for optimal ice retention.
- Keeps ice cold for 5 days.
- Rotomolded construction for exceptional rigidity and durability.
- Sealed lid for airtight, weather-tight closure.
- Rigid handles make transportation easy.
- Horizontal locking handles allow for installation of LinQ Lite accessories.
- Marine-grade hardware suited for saltwater applications.
- Holds thirty-four 355 ml cans.
- 5.3 US gal (20 L) capacity.
- Exterior dimensions: 21" L x 15" W x 14" H (52 cm L x 38 cm W x 35 cm H)
- Interior dimensions: 15" L x 10" W x 9" H (39 cm L x 26 cm W x 23 cm H)

Note: Cannot be mounted on the LinQ Stackable Fuel Caddy.



LinQ 11.4 US gal (43 L) Cooler

All Switch models

715009276

\$789.99

- Versatile LinQ 16" configuration fits many vehicles for fast, easy, secure storage.
- High-quality impact-resistant outer shell for exceptional durability.
- High-quality insulation for optimal ice retention up to 6 days.
- 11.4 US gal (43L) capacity or sixty 355 ml cans.
- Rigid horizontal locking handles allows installation of LinQ Lite accessories.
- Dry basket included to protect items.
- New ergonomic and secure latch system offers excellent sealing.
- Inside the Sea-Doo Switch the cooler can be installed length or width wise to fit your needs.



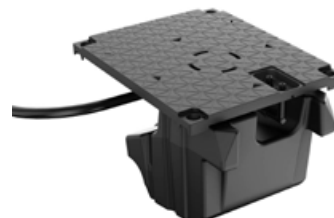
Quick-Attach 18 US gal (68 L) Cooler

All Switch models

295101304

\$1139.99

- 18 US gal (68 L) capacity.
- Using Switch quick-attach tile for fast, easy, secure storage.
- High-quality injection molding impact-resistant polypropylene outer shell for exceptional durability.
- High-quality insulation for optimal ice retention.
- Rigid handles make transportation easy.
- Horizontal locking handles allows installation of LinQ Lite accessories.
- Drain plugs at the bottom to evacuate water.
- New ergonomic and secure latch system offers excellent sealing.
- Possibility to lock the cooler with a padlock.



Livewell Conversion Kit for Switch

All Switch models (except Switch Compact and Switch Sport Compact)

295101305

\$649.99

- Converts your Switch to turn the Quick-Attach 18 US gal (68 L) Cooler into a livewell.
- Integrated pump constantly feeds fresh water into the reservoir keeping your bait alive all day.
- Includes piping to send water to the tile and the return line.
- Modified tile with quick-connect system for water inlet and outlet.
- Foam under the molded tile to allow water pipes to pass through.
- Mounting hardware included.
- Also requires the Livewell Conversion Kit for Quick-Attach 18 US gal (68 L) Cooler (295101344) to convert the Quick-Attach Cooler - 68 L (295101304) into a livewell.



Livewell Conversion Kit for Quick-Attach 18 US gal (68 L) Cooler

All Switch models (except Switch Compact and Switch Sport Compact)
295101344 **\$309.99**

- Converts your Quick-Attach 18 US gal (68 L) Cooler into a livewell.
- Includes:
 - Water piping to connect into the modified tile.
 - A cleaning gun and hose.
 - Rigid tubes to maintain the water level in the livewell.
 - A transport bag.
- Also requires the Livewell Conversion Kit for Switch(295101305) to convert the Quick-Attach Cooler - 68 L (295101304) into a livewell.



Driver Seat Storage

All Switch models
295101193 **\$104.99**

- LinQ Nano system ready.
- Additional storage on the back of the driver seat.
- Store small items like wallet, cellphone, cap and LinQ Lite Multipurpose Bag (295101154).
- Same fabric as Quick-Attach Switch Seats (295100982), marine-grade vinyl.



LinQ Lite Cup Holder

All Switch models
715009406 **\$45.99**

- Keep your beverage within reach no matter where you're sitting on your Switch.
- Flexible fins adjust to various beverage container sizes to hold most securely.
- No permanent installation point means you're free to move it almost anywhere.
- Toolless placement, easy to move from place to place.
- Can be installed in the designated mounting points on the Adjustable Table, on the vehicle railing and on the Seat Corner Backrest.
- Installation on the railing requires LinQ Lite Holder for rail (295101002).
- Installation on the Seat Corner Backrest requires LinQ Lite Holder for backrest (295101044) when not standard on.



LinQ Lite 2.6 US gal (10 L) Console Bag

All Switch models
295100985 **\$254.99**

- Compact splash-proof bag keeps contents safe and dry.
- Conveniently out of the way when stored on the front of the console, on the Seat Corner Backrest and on the railing.
- Bright yellow inner liner with removable divider makes items easy to organize and find quickly.
- Mesh pocket keeps smaller items easily accessible.
- Integrated vehicle key holder provides convenient storage for the D.E.S.S key when not in use.
- 2.6 US gal (10L) capacity.



LinQ Lite Stemware Holder

All Switch models
295101079 **\$64.99**

- Keep your beverage upright and within reach, no matter where you're sitting on your Switch.
- Funnel-shaped cup holders secure various beverage container sizes.
- No permanent installation means you and your beverage are free to roam.
- Can be installed in the designated mounting points on the Adjustable Table, on the vehicle railing and on the Seat Corner Backrest.
- Sold in pairs.



LinQ Lite 7.8 US gal (30 L) Canvas Bag

All Switch models
295100986 **\$389.99**

- Weatherproof 30 L storage capacity.
- Smartly secures on perimeter railing and on the Seat Corner Backrest to maximize floor space.
- Toolless installation in seconds with LinQ Lite clip-in system.
- Easily place or remove bag in storage location with a push or pull.
- Features zippered and magnetic top closure for quick access if needed.
- Dedicated compartment for storing boat registration, license and other important documents, plus dedicated D.E.S.S.™ key holder.
- External side pocket for easy access to small items.
- Dimensions: 13" L x 9" W x 22" H.



LinQ Lite 8.5 US gal (32 L) Ventilated Bag

All Switch models

295101089

\$259.99

- 32 L (8.5 gal.) of UV resistant storage. Maximizes floor space by conveniently storing anywhere along perimeter railing or seat corner backrest.
- Toolless install with push or pull thanks to LinQ Lite clip-in system. Magnetic top closure enables quick access for frequent items, plus two water bottle side pockets.
- Dimensions: 13" L x 9" W x 22" H.



Thermal Insert for LinQ 2.6 US gal (10 L) Modular Cargo Box

219401110

\$72.99

- Insulated liner.
- Fits very well in the LinQ 2.6 US gal (10 L) Modular Cargo Box.
- Can contain five 473 ml cans or six 355 ml cans.
- Keeps ice cold for one day.
- Interior dimensions: 17" L x 9" W x 2½" H (43cm L x 23 cm W x 7 cm H).



LinQ 10.6 US gal (40 L) Roll-Top Bag

All Switch models

715008110

\$279.99

- LinQ Roll-Top Bag offers 10.6 gal (40 L) of fully waterproof adjustable storage for your essentials.
- Its roll-top design secures your gear snugly, while a heavy-duty rigid plastic base and foam-lined bottom offer additional protection for the long haul.
- An integrated handle allows for easy transportation on or off the vehicle.
- Equipped with Marine LinQ Hardware Kit.
- Dimensions: 14" L x 19" W x adjustable H.



LinQ 5 US gal (20 L) Modular Cargo Box

All Switch models

715007112

\$219.99

- 5.2 US gal (20 L) of hard-sided modular storage capacity.
- Dimensions: 19" L x 12½" W x 9" H (49.5 cm L x 32.3 cm W x 23.5 cm H).
- Heavy-duty construction with weather-resistant sealed lid.
- Additional LinQ Modular Box (715005494) can be stacked on top for the ideal storage solution.
- Requires LinQ Base Installation Kit (295101009) to stack a LinQ 2.6 US gal (10 L) Modular Cargo Box.
- Capable of mounting in multiple LinQ attachment locations for added convenience.



LinQ 2.6 US gal (10 L) Modular Cargo Box

All Switch models

715005494

\$189.99

- 2.6 US gal (10 L) of hard-sided modular cargo capacity.
- Heavy-duty construction with weather-resistant sealed lid.
- Stackable with an additional LinQ Modular Box (715005494, 715007112) or LinQ Roll-Top Bag (715008110) for expanded storage.
- Capable of mounting in multiple LinQ attachment location for added convenience.
- Dimensions: 19" L x 12½" W x 5" H (48 cm L x 32 cm W x 13 cm H).



LinQ 7.8 US gal (30 L) Modular Cargo Box

All Switch models

715006830

\$239.99

- 7.8 US gal (30 L) of hard-sided modular storage capacity.
- Dimensions: 19" L x 12½" W x 14" H (49.5 cm L x 32.3 cm W x 35 cm H).
- Heavy-duty construction with weather-resistant sealed lid.
- Cannot be installed on LinQ Vertical Support (295100931).



LinQ 3.8 US gal (14.5 L) Stackable Fuel Caddy

All Switch models
295100950 **\$359.99**

- Quickly and easy, secure installation with the LinQ accessory system.
- No-spill spout designed for easy pouring.
- 3.8 US gal (14.5 L) capacity.
- Allows for added storage by stacking LinQ 10.6 US gal (40 L) Roll-Top Bag (715008110).
- Marinized for saltwater use.
- Dimensions: 13" L x 19" W x 9" H.

*Note: Fuel caddies cannot be stacked.
Stacking accessory requires LinQ Base Installation Kit (295101009).*



LinQ 5 US gal (20 L) Fuel Caddy

All Switch models
715007822 **\$259.99**

- Quick, easy and secure LinQ system installation.
- Spill-free spout for easy use.
- 5 US gal (20 L) capacity.
- Meets new Flame Mitigation Device (FMD) standard.
- Dimensions: 12" L x 19" W x 12" H.



LinQ Base Installation Kit

Fits LinQ Stackable Fuel Caddy
295101009 **\$51.99**

- LinQ Base Kit allows select Sea-Doo LinQ accessories to be stacked on top of the LinQ 3.8 US gal (14.5 L) Stackable Fuel Caddy (295100950).
- Includes 2 LinQ bases and marinated hardware for quick install.



LinQ Vertical Support

All Switch models
295100931 **\$249.99**

- Industry-first storage solution using watercraft rails as storage space with integrated LinQ accessories.
- Maximizes storage space without using up valuable floor space.
- Compatible with most LinQ accessories.
- Versatile modular design allows you to quickly change mounting locations as desired.
- Expands storage allowing for secure cargo capacity and added ease of use.
- Toolless installation.

NEW



LinQ Rear Floating Mat Holder

295101366 **\$174.99**

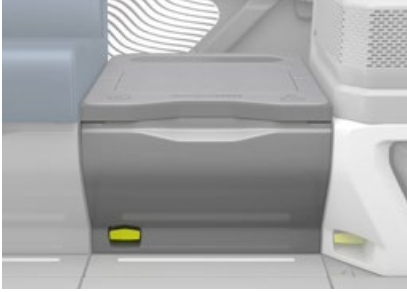
- Quickly attach and secure a floating mat to the rear deck of your watercraft.
- Installs in seconds with toolless LinQ accessory system.
- Suitable for rolled floating mats up to 28" (71 cm) in diameter.
- Can be paired with another holder for a larger floating mat (Switch models only).
- Holds up to 30 lb (14 kg) in single or dual mode.



LinQ Lite Multi Holder

All Switch models
295100977 **\$41.99**

- Allows for installation of select LinQ Lite accessories in front of Switch console.
- Capable of mounting on any flat surface such as garage walls for easy accessory storage.
- Five LinQ Lite mounting points allow for versatile storage/hanging options.
- Holds up to three LinQ Lite Cupholders.
- Finished, robust style.
- Includes necessary installation hardware.



Quick-Attach Modular Step Base

Modular Step
295101340 **\$269.99**

- Compatible with LinQ Modular Step (295101197)
- Compatible with Seat Side Panels.



Quick-Attach Modular Plate

All Switch models
295100775 **\$224.99**

- Convert any regular Switch quick-attach tile into a LinQ accessory attachment point.
- Allows installation of 16-inch LinQ accessories anywhere by adding the LinQ Modular Tile on a standard Switch floor tile.
- Easily installs and removes in seconds with Switch latching system from the Switch quick-attach tile.
- Compatible with the Sun Pad Backrest.
- Dimensions: 19" x 18".



Cargo Tile with LinQ

All Switch models
295100989 **\$169.99**

- Instantly adds another LinQ accessory attachment point to your Switch.
- Allows for secure installation of LinQ accessories to eliminate loose items moving around on deck.
- Multiple installation locations, so you decide where your accessories are best stowed.
- LinQ bases retract when not in use for an even floor surface.
- Easy installation replaces regular Switch quick-attach tile.



Modular Step

All Switch models
295101197 **\$204.99**

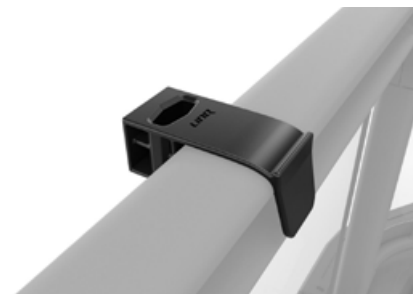
- Eases boarding and unboarding of a Switch.
- Same size and construction as a seat base.
- Non-slip top surface.
- Offers additional storage underneath.
- Can convert an existing seat into a LinQ Modular Step.
- Can be installed on LinQ Modular Step Base (295101340).



LinQ Lite Action Camera Holder

All Switch models
295101139 **\$67.99**

- LinQ Lite attachment system for cameras.
- Provides great vantage points to capture photos and videos.
- Designed to hold devices securely.
- Fast, easy attachment and removal.
- Offers 360-angle positioning for perfect filming and taking photos.
- Requires LinQ Lite Holder for Rail (295101276) for installation on the railing.



LinQ Lite Holder for Rail

All Switch models
295101276 **\$20.99**

- Create a new mounting point for most LinQ Lite accessories on the Switch rail.
- Can be moved around the railing for added convenience and customization.
- Opens up more valuable floor space by keeping belongings stored on the perimeter of the watercraft.
- Quick and toolless installation.
- Sold in pairs.



LinQ Lite Single Holder

All Switch models

295101022

\$26.99

- Allows installation of most LinQ Lite accessories on any flat surface outside Switch pontoon
- Possible to install on other vehicles, wherever LinQ Lite accessories can be used.
- Ideal storage solution for when LinQ Lite accessories are not in use.

NEW

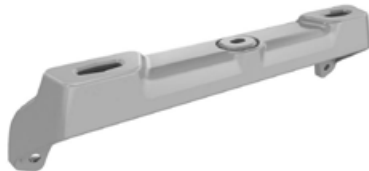


Set of 3 Watertight Roll-Top Bags

295101448

\$104.99

- 1.3, 2.6 and 5.3 US gal (5, 10 and 20 L) storage capacity.
- Set of three water-resistant bags.
- Roll-top design.
- Easy to fold and store.
- Perfect solution to organize your storage or bags.



LinQ Lite Holder for Corner Backrest

All Switch models

295101044

\$49.99

- Conveniently install LinQ Lite accessories such as LinQ Lite Console Bag or LinQ Lite Cup Holders on Single Seat Corner Backrest.
- Holds up to two LinQ Lite Cupholders or a single LinQ Lite bag.
- Stylish and strong finished look.
- Includes installation hardware.



Dry Bag 2.6 US gal (10 L)

269502121

\$47.99

- Watertight bag.
- Puncture-resistant PVC-coated polyester fiber material.
- Reinforced bottom.



Dry Bag 6.6 US gal (25 L)

269001936

\$81.99

- Watertight bag.
- Puncture-resistant PVC-coated polyester fiber material.
- Reinforced bottom.
- Includes a shoulder strap.
- 420-denier resistant polyester with TPU coating.



Sea-Doo 3.7 US gal (14 L) Cooler Bag

295100965

\$224.99

- 3.7 US gal (14 L) of thermal insulated soft-sided storage.
- Waterproof sealed construction.
- Magnetic top opening for quick access and sure seal when closed.
- Robust outer material for durability with a modern look.
- Carry handles and removable straps for easy transportation to and from the water.
- Outside identification pocket.
- Stows perfectly in the Single Seat underseat storage of all Switch models.
- Can contain sixteen 355 ml cans.
- Keeps ice cold for two days.
- Exterior dimensions: 13" L x 12 ¼" W x 9" H.
- Interior dimensions: 11" L x 12" W x 7" H.



Stainless Barrel Lock

All Switch models

295100936

\$119.99

- Locking mechanism for glovebox, engine access cover and under-deck storage compartment keeps stowed items safe and secure while you're on shore.
- Fully marinized stainless-steel design is corrosion resistant for marine applications.
- Tamper-resistant security locks offer ultimate peace of mind.
- Sold individually, comes with one key.

Fishing Accessories



LinQ Lite Multipurpose Bag

All Switch models
295101154 **\$134.99**

- Perfect add on to store and organize your fishing equipment or store other items like sunscreen, cellphone, sunglasses and more.
- Toolless installation in seconds with LinQ Lite clip-in system.
- Five external pockets for fast access to small necessities.
- Features one zippered opening.
- Fishing line leader dispenser included.
- Dedicated tacklebox compartment.
- Smartly secures on perimeter railing, on LinQ Lite Holder for Corner Backrest (295101044) or Quick-Attach Fishing Pedestal Seat (295101306) to maximize floor space.
- Dimensions: 16" L x 3.5" W x 10.5" H.



Quick-Attach Fishing Pedestal Seat

All Switch models
295101306 **\$1,339.99**

- Optimized for fishing.
- Can be moved around on the Quick-Attach Switch tiles.
- Allows installation of LinQ Lite accessories on each handles on the side of the seat.
- Designed for ease of movement and comfort.
- Adjustable height, 360 rotation.
- Backrest can be folded and used as a working table for fishing rod prep.
- Passenger should sit on it only when the boat is going 5mph or less.



Quick-Access Rod Storage

All Switch models
295101324 **\$269.99**

- Convenient Quick-Access Rod Storage fits to the rail near the console.
- Can store up to four fishing rods.
- Possibility to lock the system for added security when leaving the boat.



Rail Rod Holder with LinQ Lite

All Switch models
295101308 **\$134.99**

- Perfect to safely transport your fishing rods to your favorite fishing spots or for trolling.
- Features quick-attachment system with release lever for easy installation onto / removal around the railing for added convenience and customization.
- Firmly holds fishing rod using a molded rubber cap specifically designed to quickly secure or remove the fishing rod using the reel arm.
- Allows installation of a single LinQ Lite accessory.

Biminis, Camper Enclosure and Tops

Double Bimini Top 18'



Double Bimini Top 21'



Double Bimini Top

Double Bimini Top 18' - Switch Sport 18', Switch Cruise 18', Switch Cruise Limited 18', Switch Fish 18'

295100823 \$2,319.99

Double Bimini Top 21' - Switch Sport 21', Switch Cruise 21'

295100962 \$2,579.99

Switch Cruise Limited 21', Switch Fish 21'

295101424 \$2,579.99

- Full-length weather and sun protection in a robust, modern design.
- Made of UV and water resistant high-grade marine canvas.
- Double-face lamination for added stability and water protection.
- No top speed limitation on water.
- Capable of being deployed in three stages (front, rear and full coverage).
- Easily deployed and lowered by one person.
- Compatible with the addition of Camper Enclosure.
- Includes canvas and structure.
- Light pole extension (295101048) is required for riding between sunset and sunrise or when visibility is reduced.

295100823

- Provides additional 36" of coverage at the front and 22" at the rear.

295100962, 295101424

- Provides additional 72" of coverage at the front and 22" at the rear.

Bimini Top Sleeve



Bimini Top Sleeve

Bimini Top standard section (expect Switch Cruise Limited, Switch Fish)

295101136 \$154.99

Bimini Top extended section (expect Switch Cruise Limited, Switch Fish)

295101137 \$154.99

- Sleek, modern storage design protects your Switch Bimini Top.
- Perfect during storage, trailering or cruising with the bimini closed.
- UV- and water-resistant high-grade marine canvas construction.
- Easy one-person installation.
- Requires Bimini Top or Double Bimini Top.
- Requires 295101136 and 295101137 for full protection of a Double Bimini Top.

Double Bimini Top Sleeve



NEW



Pop-Up Changing Room And Emergency Toilet

295101419

\$134.99

- Offers a private space to change clothes or to use the emergency toilet.
- Comes with a storage bag that can hold the privacy curtain and emergency toilet.
- Can be quickly installed to any bimini structure with simple strap attachments.
- Zippered opening for easy access.
- Dimensions once open : 30" L x 30" W x 80" H (76 cm L x 76 cm W x 203 cm H).
- Stows easily in under-seats compartment.



Light Pole Extension

All Switch models

295101048 \$299.99

- Required when the Double Bimini is installed, between sunset and sunrise, or when visibility is reduced.
- Indicates watercrafts position and orientation, especially with respect to other vessels, when the Double Bimini top is installed.
- Connects and installs easily the same way as the standard navigation light.

NEW Front Dodger 18'



NEW Front Dodger 21'



NEW
Front Dodger

18'	
295101354	\$1,339.99
21'	
295101418	\$1,339.99

- Acts as a windshield for your Switch pontoon.
- Heavy-duty, UV-resistant polyester canvas protects from rain and wind when traveling or changing locations.
- Stows in the bimini top storage compartment to optimize on-board layout.
- Can be used at speeds up to 35 mph (56 km/h).
- Does not alter the field of vision.
- Toolless and quick to install and remove in less than 10 minutes.

Camper Enclosure 18'



Camper Enclosure 21'



Camper Enclosure

Camper Enclosure 18' - Switch Sport 18', Switch Cruise 18'	
295100963	\$3,089.99
Camper Enclosure 21' - Switch Sport 21', Switch Cruise 21', Switch Cruise Limited 21' (except Limited with Double Bimini Top)	
295101004	\$3,359.99

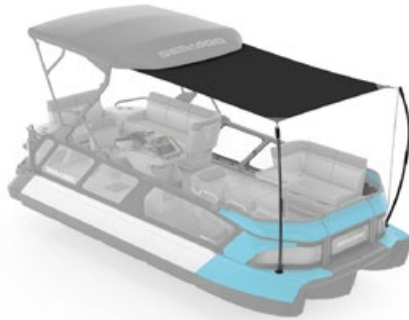
- Add full protection from weather, bugs and other elements.
- Full field of view when in use is unmatched in the marine industry.
- Next-level innovation offers exceptional ease of use.
- Labeled installation sections eliminate guesswork during assembly.
- Bug netting defends against insects while allowing air flow.
- Under-roof pockets cleverly store canvas and panels when not in use.
- Zippered closure system.
- Railing clip system provides effortless installation without the use of hard snaps.
- Light pole extension (295101048) is required when riding between sunset and sunrise, or when visibility is reduced.

- 295100823
- Requires the Double Bimini Top (295100823) for installation (sold separately).
- 295101004
- Requires the Double Bimini Top (295100962 or 295101424) for installation (sold separately).

Sunshade Extension 18'



Sunshade Extension 21'



Sunshade Extension

Sunshade Extension 18' - Switch Sport 18', Switch Cruise 18', Switch Cruise Limited 18', Switch Fish 18'

295101284

\$809.99

Sunshade Extension 21' - Switch Sport 21', Switch Cruise 21', Switch Cruise Limited 21', Switch Fish 21' (except Limited with Double Bimini Top)

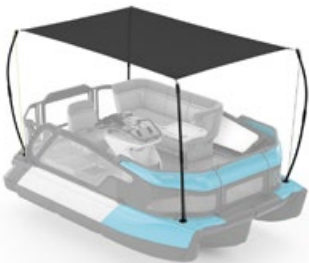
295101285

\$879.99

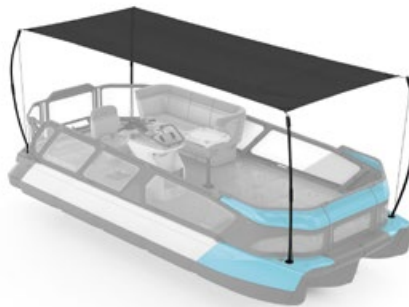
- Shaded paradise at the forefront, this removable sunshade provides a covered bow seating area.
- High-quality lightweight canvas stands up to UV rays and resists mold and mildew.
- Easy toolless installation. Stores in the included storage bag when not in use.
- Conveniently clips to Bimini Top for full deck coverage.
- Includes poles, canvas, ropes and installation bases.

**Not for use at speeds greater than 5 mph (8 km/h).*

Sunshade 13'



Sunshade 19'



Sunshade

Sunshade 13' - Switch Compact, Switch Fish Compact

295101030

\$1,149.99

Sunshade 16' - Switch 16'

295100781

\$1,209.99

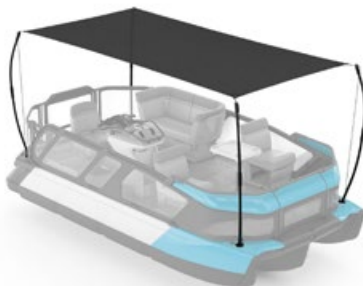
Sunshade 19' - Switch 19'

295101031

\$1,279.99

- This removable sun shade provides covered seating area for entire watercraft.
- Sturdy, heavy-duty stitching for use while underway and long-lasting durability.
- Lightweight, high-quality perforated canvas holds up against UV rays and resists mold and mildew.
- Easily installs without tools and stores in included storage bag.
- Includes the poles, the canvas, the ropes and the installation bases.
- Offers great sun protection at rest during no/light wind conditions or when cruising below 5 mph (8 km/h).

Sunshade 16'



Audio, Electronics & Electrical



Fourth JL Audio System Table

Switch Cruise Limited
295101214 **\$2,989.99**

- 10.25" Color Touchscreen Display is pre-programmed to optimize sound quality.
- Two High performance 6.5" JL Audio speakers feature a long-throw woofer design and excellent power handling for amazing sound at speed, or lounging at rest.
- The 10" JL Audio subwoofer with long-throw capability delivers tremendously rich bass performance with complete clarity from compact, shallow-depth enclosure.
- JL Audio amplifier delivers very clean, high power output to drive speakers and subwoofer.
- Complete audio-visual experience with Bluetooth controlled RGB LED lighting.
- Built within Switch corner table for a seamless integration and provides multi-function with cup holders and USB ports.
- Reliable and durable marine-grade construction, all components are resistant to corrosion and elements.
- Addition of High Capacity Battery Holder and Harness Kit (295100966) highly recommended.



JL Audio Harness Adaptor

All Switch models (2024 and up, except Switch Cruise Limited)
295101215 **\$519.99**

- Used when boat is not equipped with 10.25" Color Touchscreen Display.
- The standard JL Audio head unit will control volume at stern, bow and sub independently.
- Compatible with both two table and four table setups.



Two JL Audio System Tables

All Switch models (2024 and up, except Switch Cruise Limited)
295101421 **\$6,179.99**

- Four High performance 6.5" JL Audio speakers feature a long-throw woofer design and excellent power handling for amazing sound at speed, or lounging at rest.
- The 10" JL Audio subwoofer with long-throw capability delivers tremendously rich bass performance with complete clarity from compact, shallow-depth enclosure.
- Two JL Audio amplifiers deliver very clean, high power output to drive speakers and subwoofer.
- Complete audio-visual experience with Bluetooth controlled RGB LED lighting.
- Built within Switch corner tables for a seamless integration and provides multi-function with cup holders and USB ports.
- Reliable and durable marine-grade construction, all components are resistant to corrosion and elements.
- JL Audio Harness Adaptor (295101215) required for JL head unit when boat is not equipped with 10.25" Color Touchscreen Display.
- Addition of High Capacity Battery Holder and Harness Kit (295100966) highly recommended.



BRP Audio System

All Switch models (except Switch Cruise Limited)
295101275 **\$1,139.99**

- Fully integrated Bluetooth audio system.
- Two high performance 6" speakers and amp deliver 100 watts of crisp, clear audio.
- Speakers located at front and rear of console for surround sound-like coverage.
- Console-mounted control pad for easy access.
- Fully watertight and corrosion resistant, built to withstand harsh outdoor conditions and saltwater.



BRP Premium Audio System

All Switch models -Two 6.5" speakers with 10" subwoofer, two amplifiers and one harness
295100967 **\$3,709.99**

All Switch models - Two 6.5" speakers
295101013 **\$1,319.99**

- Includes four 6.5" speakers, 10" subwoofer and two amplifiers calibrated by JL Audio.
- Must order both sku's (295100967 & 295101013) for a complete kit.
- High performance 6.5" JL Audio speakers feature a long-throw woofer design and excellent power handling for amazing sound at speed, or lounging at rest.
- The 10" JL Audio subwoofer with long-throw capability delivers tremendously rich bass performance with complete clarity from compact, shallow-depth enclosure.
- Two JL Audio amplifiers deliver very clean, high power output to drive speakers and subwoofer.
- Complete audio-visual experience with Bluetooth controlled RGB LED lighting.
- Built within Switch corner tables for a seamless integration and provides multi-function with cup holders and USB ports.
- Reliable and durable marine-grade construction, all components are resistant to corrosion and elements.
- Right side includes two 6.5" speakers with 10" subwoofer, two amplifiers and harness.
- Left side includes two 6.5" speakers.



Fish Finder and Depth Finder Garmin⁺ GT15M-IH Transducer

All Switch models

295100972

\$419.99

- Garmin's GT15M-IH In-Hull Mid-Band CHIRP Transducer provides accurate depth readings even at high speed.
- Ideal for watercraft where you want to install the transducer inside a fiberglass hull and not on the transom.
- It can be used with a hull dead rise angle between 0 and 25 degrees and is excellent for watercraft traveling at high speeds.
- In-hull installation, no need to drill through the vessel; no drag.
- The 8-pin transducer with 1 plastic tank features mid-band CHIRP traditional sonar (85-165 kHz) and has a power rating of 600 W.
- Requires Garmin⁺ ECHOMAP™ GPS.



Depth Finder

All Switch models

295100872

\$549.99

- Display the water depth below the hull.
- Plug-and-play connection.
- Integrates depth display into gauge menu.
- Does not require Garmin ECHOMAP GPS screen for installation.



Garmin⁺ ECHOMAP™ UHD2 72sv GPS

All Switch models (2024 and up)

295101242

\$1,549.99

- Bright, sunlight-readable 7" (17.8 cm) touchscreen.
- GPS support included for installation.
- Transducer not included, provides GPS function only.
- Features a quick-release bail mount for quick installation and removal.
- Preloaded worldwide basemaps and compatible with Bluechart® G3 coastal charts (sold separately).
- Share data and maps with select ECHOMAP devices on your network.
- Use built-in Wi-Fi® to pair with the free ActiveCaptain™ app for access to OneChart™, smart notifications¹, Garmin Quickdraw™ Community data and more.
- Requires Harness (278003684) if installed along with other electrical accessories.



Front Docking Lights

All Switch models

295101083

\$389.99

- Perfect low-light visibility for docking or loading at dusk.
- Low/high-beam intensity.
- Fixed bow-mounted installation.
- Control switch installed on console.
- Requires Harness (278003684) if installed along with other electrical accessories.



10.25" Color Touchscreen Protector

Vehicle equipped with 10.25 in. Color Touchscreen Display

860202680

\$30.99

- Tempered glass - 0.3 mm thick.
- 9H hardness for tough protection.
- 100% bubble free adhesive.
- Anti-scratch, anti-glare and anti-fingerprint.
- Maintains 99.99% clarity.
- Easy to clean.
- Includes cleaning tools: wet wipe, dry wipe, dust absorber and soft cloth.



Rear Underwater Lights

All Switch models

295101327

\$469.99

- Perfect visibility in low light conditions at dusk and in foggy conditions.
- The soft glow emits a pleasant atmosphere on your boat.
- Low/high-beam intensity.
- Stern underwater installation.
- Control switch installed on console.
- Requires additional Harness (278003684) if installed along with other electrical accessories.



Heated Grips

All Switch models

295100812 \$309.99

- Heated handlebar grips keep hands warm on cool rides.
- Five pre-set heat levels for optimal comfort.
- Replace existing grips with easy, slip-on design.
- Sea-Doo's renowned integrated palm rest design.
- Specially designed for marine conditions.
- Requires Harness (278003684) if installed along with other electrical accessories.



High Capacity Battery Holder and Harness Kit

All Switch models (except Switch Fish)

295100966 \$274.99

- Allows you to install a Group 27 AGM battery that will give you the extra juice you'll need to power auxiliary electrical components like a sound system or GPS.
- Includes all necessary wiring and battery holder.
- Required Group 27 AGM battery not included.



Battery Upgrade and Cut-Off Switch kit

All Switch models (2023 and prior)

295101330 \$239.99

- Increases audio listening time when stopped on the water and allows GPS and Fish Finder usage.
- Masterswitch upgrade ensures less battery drainage.
- Helps prevent battery to die during long time storage.
- Specific upgrade for 2022 and 2023 Switch models.
- Does not include 32 Ah battery.



Ski and X Package Module

Switch, Switch Cruise (except Switch Cruise Limited 21')

295100857 \$234.99

- One module that includes both Ski and X Package functions:
- Activates ski mode: Offers a choice of different preset acceleration curves for the perfect launch every time when towing a skier or wakeboarder, plus steady tow speed.
- Activates X package functions on gauge.
- See X Package Module description to find out which X features it unlocks on your vehicle.
- User-friendly interface on gauge.
- Simple plug-in connection.
- Standard on Switch Sport models.
- Includes hardware necessary for installation.



Double Battery Kit with Battery Charger

All Switch Models (Except Switch Fish and 13' models)

295101482 \$1,079.99

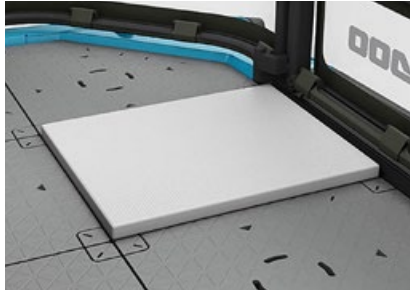
Double Battery Kit:

- Give you at least 4 hours of listening without engine running.
- Replaces original battery.
- Includes batteries enclosure, breaker and electrical harnesses.
- We recommend using two group 27 battery 296000465 (sold separately).
- Requires Battery Upgrade & Cut-Off Switch Kit (295101330) for installation on 2022 and 2023 models.

Battery Charger:

- Fully automatic 20 A double bank battery charger.
- Charges and maintains large batteries.
- Microprocessor controlled multi-stage charging for added precision, safety and battery life.
- Auto-voltage detection.
- Automatically detects 6 or 12 volts batteries.
- Cap and owner's manual.
- Float mode monitoring automatically maintains optimum battery charge.
- Reverse hook-up protection helps protect battery and charger from damage.
- Meets the highest industry standards for energy.
- Includes : 20 Amp double bank battery charger and owner's manual.

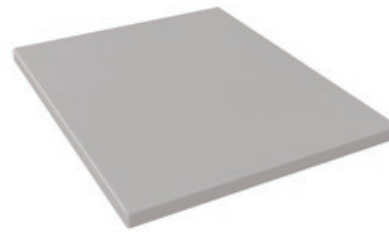
Flooring Accessories



Sun Pads

All Switch models	
281300781 Rectangle	\$154.99
All Switch models	
281300780 Corner	\$154.99
All Switch models	
281300782 Square	\$119.99

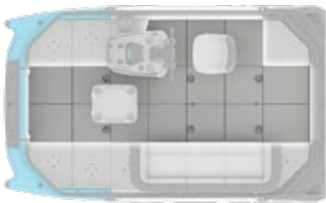
- Provides the perfect place for relaxing in the sun with friends.
- 20mm pad thickness offers seat-like comfort.
- Water-resistant material won't absorb water.
- Durable, high-quality material is easy to maintain and resists fading, stains, mildew, as well as wear and tear.
- Secured in place with plastic hooks, over-molded with polyurethane material for easy install and removal.
- Customizable configuration with the Switch tile system.
- Sold individually.



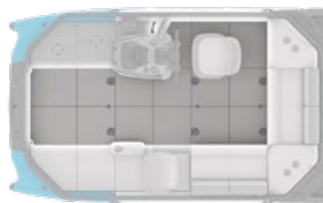
Deck Mat

Switch Compact		Switch Sport Compact	
295101336	\$759.99	295101337	\$779.99
Switch 16'; Switch Fish 18'		Switch Sport 18'	
295101334	\$949.99	295101338	\$729.99
Switch 19'; Switch Fish 21'		Switch Sport 21'	
295101335	\$979.99	295101339	\$779.99

- Adds extra comfort for passengers with a stylish, modern look.
- Fast and easy to install, remove and customize configuration in seconds with exclusive Switch quick-attach tile system integration.
- 8 mm thickness adds ideal padding for lounging, sunbathing and cruising for the whole family.
- Polyurethane material construction cleans easily and resists stains, fading and mildew.
- Anti-slip finish provides secure surface to stand on, even in wet conditions.



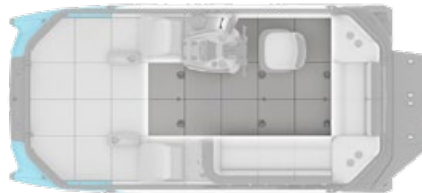
295101336



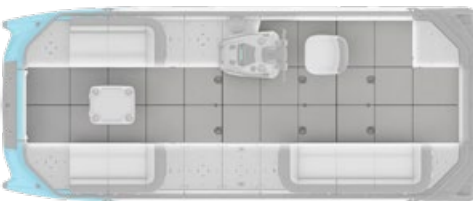
295101337



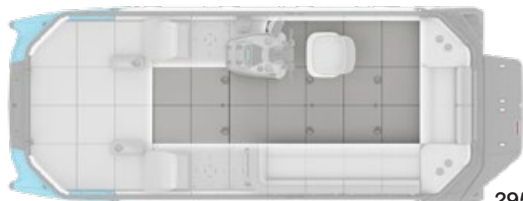
295101334



295101338



295101335



295101339

Furniture & Seating

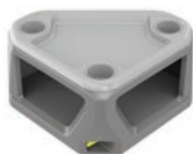
NEW



BBQ Table with LinQ Lite

295101351 **\$399.99**

- Offers flexibility, comfort and convenience with different positioning options.
- Can be used as a service table or to put a marine grill (recommended model: Magma A10-703 & adaptor: T10-321).
- Easily installs with Switch locking mechanism in three locations: front or rear of the Switch, or on the swim platform.
- Four LinQ Lite mounting points increase versatility and usable space by allowing LinQ Lite Cup Holders or LinQ Lite Multipurpose Bag to be mounted on the side of the table.
- Stows easily in under-deck compartments.
- Height: 30" (76 cm).
- Dimensions: 24" x 15" (61 cm x 38 cm).



Quick-Attach Corner Table

All Switch models
295101052 **\$389.99**

- Convenient corner table with 2 cup holders adds storage and versatility to overall floor plan.
- Multiple layout configurations thanks to exclusive Switch latching system.
- Easily removes in seconds to add more open floor space when desired.
- Easy-to-clean surface and perfect match for Switch modern look. Sport Railing Backrest must be removed for installation on Switch Sport models.

NEW



Rail Service Table

295101357 **\$339.99**

- Offers flexible comfort and convenience in a variety of positions.
- Quickly change mounting locations on the rails as desired.
- Can be positioned inwards or outwards to maximize space inside the boat.
- Four LinQ Lite mounting points increase versatility and usable space by allowing LinQ Lite Cup Holders or LinQ Lite Multipurpose Bag to be mounted on the side of the table.
- Stows easily in under-deck compartments.
- Dimensions: 24" x 15" (61 cm x 38 cm).



Quick-Attach Single Seat

All Switch models
295100982 **\$499.99**

- Comfortable, versatile seat for one passenger.
- Capable of moving around the deck for a variety of layouts.
- Toolless installation and removal with the Switch latching system.
- Available handle adds security for bumpy rides.
- Marine-grade vinyl is easy to clean and stands up to sun and weather.
- Can be installed on the Multi-surface Switch Modular Deck (sold separately) for use outside your Switch.
- Seat Corner Backrest and Seat Side Panels can be added (sold separately) for a more finished layout.



Adjustable Table

All Switch models
295100784 **\$359.99**

- Offers flexible comfort and convenience in a variety of adjustable heights and positions.
- Textured tabletop pattern adds grip to table surface to help items stay in place.
- Four cup holders to securely hold most size of beverages.
- Easily installs with Switch locking mechanism in 3 locations: Front or rear of the watercraft, or on the swim platform.
- Top portion can also be used without pedestal when installed between two seats.
- Two LinQ Lite mounting points increase versatility and usable space by allowing LinQ Lite cup holders to be mounted on the side of the table.
- Dimension: 22" x 18".
- Maximal height: 29" retractable to: 20".



Seat Side Panel

Single Seat
295101047 Right **\$55.99**

Single Seat
295101046 Left **\$55.99**

- Closes the underseat storage space for a closed storage compartment.
- Seamless integration and easy installation. Right Hand Side.



Seat Corner Backrest

Single Seat
295100970 Right **\$399.99**

Single Seat
295101045 Left **\$399.99**

- Create a corner seat or complete a longer bench for more seating.
- Padded lateral support provides optimal comfort.
- Available in both right- and left-handed orientation to fit your needs.
- Must be mounted to the side of a Switch Single Seat.
- Features a LinQ Lite Holder for Corner Backrest (295101044) that allows the installation of LinQ Lite accessories.



LinQ Lite Holder for Corner Backrest

All Switch models
295101044 **\$49.99**

- Conveniently install LinQ Lite accessories such as LinQ Lite Console Bag or LinQ Lite Cup Holders on Single Seat Corner Backrest.
- Holds up to two LinQ Lite Cupholders or a single LinQ Lite bag.
- Stylish and strong finished look.
- Includes installation hardware.



Driver Seat Bolster

Driver Seat
295101007 **\$289.99**

- Flip-up bolster adds 7 inches to driver seat for higher seating position.
- Perfect ergonomics for captain over longer rides.
- Marine-grade vinyl-coated polyester resists cracking, stains and mildew.
- Quick, easy installation.
- Standard on Switch Sport and Cruise models.



Soft Armrest with Cup Holder

269003781 **\$154.99**

- Adds comfort plus a convenient cup holder for your beverage.
- Ideal height for arm support while laying on the Sport Lounge.
- Easy installation.



Watersport Accessories



Wakeboard Holder

All Switch models

295100932

\$389.99

- Easy, safe onboard storage for your wakeboard.
- Rail-mounted installation saves valuable floor space.
- Robust quick-install system offers can be installed in a variety of locations for ultimate convenience.
- EVA foam cushion protects board edge while underway.
- Adjustable strap accommodates most sizes and styles of wakeboards and wakeskates.
- Sold individually, each rack holds one wakeboard.



Rearview Mirror

Switch models with Bimini Top

295100934

\$234.99

- Ideal solution for rearview sight while towing.
- Adjustable height and angle for the perfect view.
- Wide angle mirror reduces blind spots.
- Folds up when not in use.
- High-quality mirror for an undistorted view.
- Securely clamps to the Bimini Top structure.
- Dimension: 4.4" x 9".



Wake and Ski Pylon

All Switch models

295100971

\$979.99

- High-rise tow pylon for the perfect ski or board pull.
- Raises tow point by 23 3/4" (60cm) to keep rope out of the water and provide optimal pull angle.
- Easy install and removal.
- Profiled tube made of extruded high-strength aluminum.



Rearview Mirror

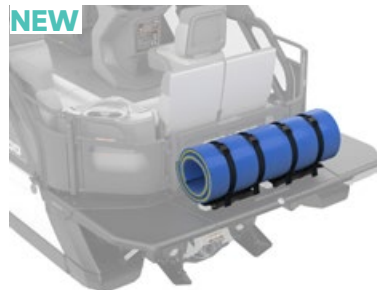
Switch models without Bimini Top

295100777

\$234.99

- Ideal solution for rearview sight while towing.
- Adjustable height and angle for the perfect view.
- Wide angle mirror reduces blind spots.
- Folds up when not in use.
- High-quality mirror for an undistorted view.
- Rail installation on Switch models without Bimini top
- Dimension: 4.4" x 9".

NEW



LinQ Rear Floating Mat Holder

All Switch models

295101366

\$174.99

- Quickly attach and secure a floating mat to the rear deck of your watercraft.
- Installs in seconds with toolless LinQ accessory system.
- Suitable for rolled floating mats up to 28" (71 cm) in diameter.
- Can be paired with another holder for a larger floating mat (Switch models only).
- Holds up to 30 lb (14 kg) in single or dual mode.



Shock Tube

295100662

\$32.99

- Protects passengers from ski rope kick-back and keeps it away from impellers.
- Durable nylon covered closed-cell foam.



Swim Platform

Switch 16'; Switch 19'
295101467 **\$779.99**

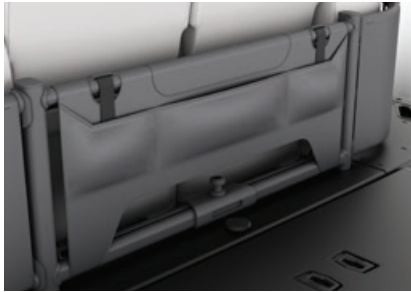
- Adds 18 inches of platform space to the rear of the watercraft, outside the railing.
- Easy access to water for swimming, tubing and other watersports.
- Includes 2 retractable LinQ attachment points to allow for easy LinQ accessory installation and stow out of the way when not in use.
- Allows for use of Adjustable Table accessory for true waterfront dining.
- Compatible with Quick Attach Inflatable Holder to store inflatables.



Swim Platform

Switch 16'; Switch 19' (2024 and up)
295101468 **\$2,269.99**

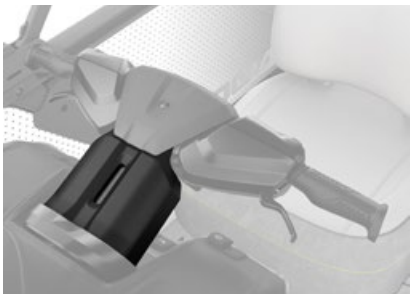
- Adds 18" of platform space to the rear of the watercraft, outside the railing.
- Easy access to water for swimming, tubing and other watersports.
- Includes two retractable LinQ attachment points to allow for easy LinQ accessory installation and stow out of the way when not in use.
- Allows for use of Adjustable Table accessory for true waterfront dining.
- Compatible with Quick Attach Inflatable Holder to store inflatables.
- The Swim Platform is now as large as the rear of the pontoon.
- Comes with a ladder to facilitate boarding and unboarding of the swim platform.



Quick Attach Inflatable Holder

Switch Cruise and Sport 18'; Switch Cruise and Sport 21'; Switch Cruise Limited 21'
295101050 **\$269.99**

- Gives you a secure place to stash your tube without having to deflate it first.
- Positioned outside of the boat, it stays out of the way while not in use.
- Adjustable straps accommodate most sizes and shapes of inflatables.
- Standard on Switch Sport Models.



Quick Adjust Handlebar

All Switch models
295101196 **\$339.99**

- Move your steering up and down with this Quick Adjust Handlebar for added comfort.

Docking & Anchoring



LinQ Lite Fender Kit

All Switch models

295101277

\$249.99

- Optimal protection for watercraft while docking.
- Full adjustable height to fit any dock.
- High-quality, marine grade vinyl construction withstands dock impacts, resists sun fading and cracking.
- Easy to inflate to maintain proper air pressure.
- Unique LinQ stowage when not in use stores vertically on rail out of the way.
- Fast, easy LinQ installation.
- Includes two LinQ Lite Fenders, two LinQ Lite Holder for rail and ropes.
- Dimensions: 20-inch length, 7-inch diameter.
- Color: Grey



Rear Underwater Lights

All Switch models

295101327

\$469.99

- Perfect visibility in low light conditions at dusk and in foggy conditions.
- The soft glow emits a pleasant atmosphere on your boat.
- Low/high-beam intensity.
- Stern underwater installation.
- Control switch installed on console.
- Requires additional Harness (278003684) if installed along with other electrical accessories.



Speed Tie

All Switch models

295100778

\$599.99

- The ultimate mooring line management system that frees up storage and floor space.
- Convenient, easy-access secure docking solution, fully integrated rope management system.
- $\frac{3}{8}$ " (10 mm) double braided rope, 20' (6 m) at front and 20' (6 m) at rear.
- Installs at pontoon cleats.
- Up to four speed ties per pontoon. One kit each side.
- Sold in pairs.



Anchor Kit

295100821

\$359.99

- Optimal anchoring solution for Switch watercraft for mooring in mud, sand, gravel and rock bottoms.
- Easily stowes in dedicated Integrated Anchor Storage.
- Specifically designed for Switch watercraft weight and dimensions for exceptional holding power.
- Vinyl-coated anchor and chain resist rust.
- Kit includes: Anchor (8 LB), $\frac{3}{8}$ " x 100' marine-grade black nylon rope with two stainless-steel shackles and $\frac{1}{4}$ " x 4' high-quality PVC-coated chain.



Front Docking Lights

All Switch models

295101083

\$389.99

- Perfect low-light visibility for docking or loading at dusk.
- Low/high-beam intensity.
- Fixed bow-mounted installation.
- Control switch installed on console.
- Requires Harness (278003684) if installed along with other electrical accessories.



Mooring Rope

295100825

\$30.99

- Shock-cushioned nylon rope ideal for mooring your Switch.
- 25-foot length.
- High durable, high strength.

Boating Essentials



Paddle

295101192 Black **\$134.99**

- Lightweight retractable paddle.
- Versatile T-handle provides grip and doubles as a docking hook.
- Floats for added peace of mind.
- Easily disassembled for quick stowage - storage strap included.
- Extends from 69" - 87" (174 cm - 222 cm).



Safety Equipment Kit

295100330 **\$30.99**

- This kit includes all the essentials for your watercraft.
- 50' (15 m) of buoyant heaving line, bailer, whistle and watertight flashlight.



Fire Extinguisher

295100833 **\$49.99**

- A requirement for any watercraft.
- Designed to fit in any fire extinguisher case holder.
- Ideal for grease, oil and electrical fires.
- US and Canadian Coast Guard approved.



RF Programmable D.E.S.S.™ Key

All Switch models
278003400 Yellow **\$114.99**

All Switch models
278003401 Green (Learning Key) **\$114.99**

- Digitally Encoded Security System (D.E.S.S.) key's ball-and-socket design provides riders with easy and quick starts every time.
- Anti-theft technology: the key communicates with the vehicle wirelessly, so the vehicle starts only when the key code matches the vehicle, for ultimate peace of mind.
- The RF Programmable D.E.S.S. Key can also be programmed to limit the speed of the boat, enabling first time users and less experienced operators to learn how to operate it while gaining the necessary confidence and control.
- Color options facilitate the differentiation between the programmed keys.
- Can be used as replacement key or second key.



Whistle

295500554 **\$18.49**

- "Pea-less" whistle.
- Produces an extremely loud, high, penetrating sound that can be heard over long distances.
- Unaffected by water; just clear with one quick blow.



Key Bracelet

RF Programmable D.E.S.S.™ Key
278004088 **\$38.99**

- Bracelet only.
- RF Programmable D.E.S.S.™ Key sold separately.



Registration Kit

All Switch models
295100631 **\$50.99**

- High-quality UV-resistant registration kit.
- 4" (10.2 cm).
- Easy to install without deformation, with a glue that will adhere to all surfaces.
- Meets mandatory regulations for height and size and international laws.

Add a Splash of Color



Custom Graphics are now available to customize your Sea-Doo Switch and make a statement on the water. With our range of colors and design options, you can create a personalized look that reflects your unique style.

Customize your wrap coloration, design and even add registration numbers. For more details, see scsunlimited.com.



New Graphic Kits

Model Choppy



Model Refraction

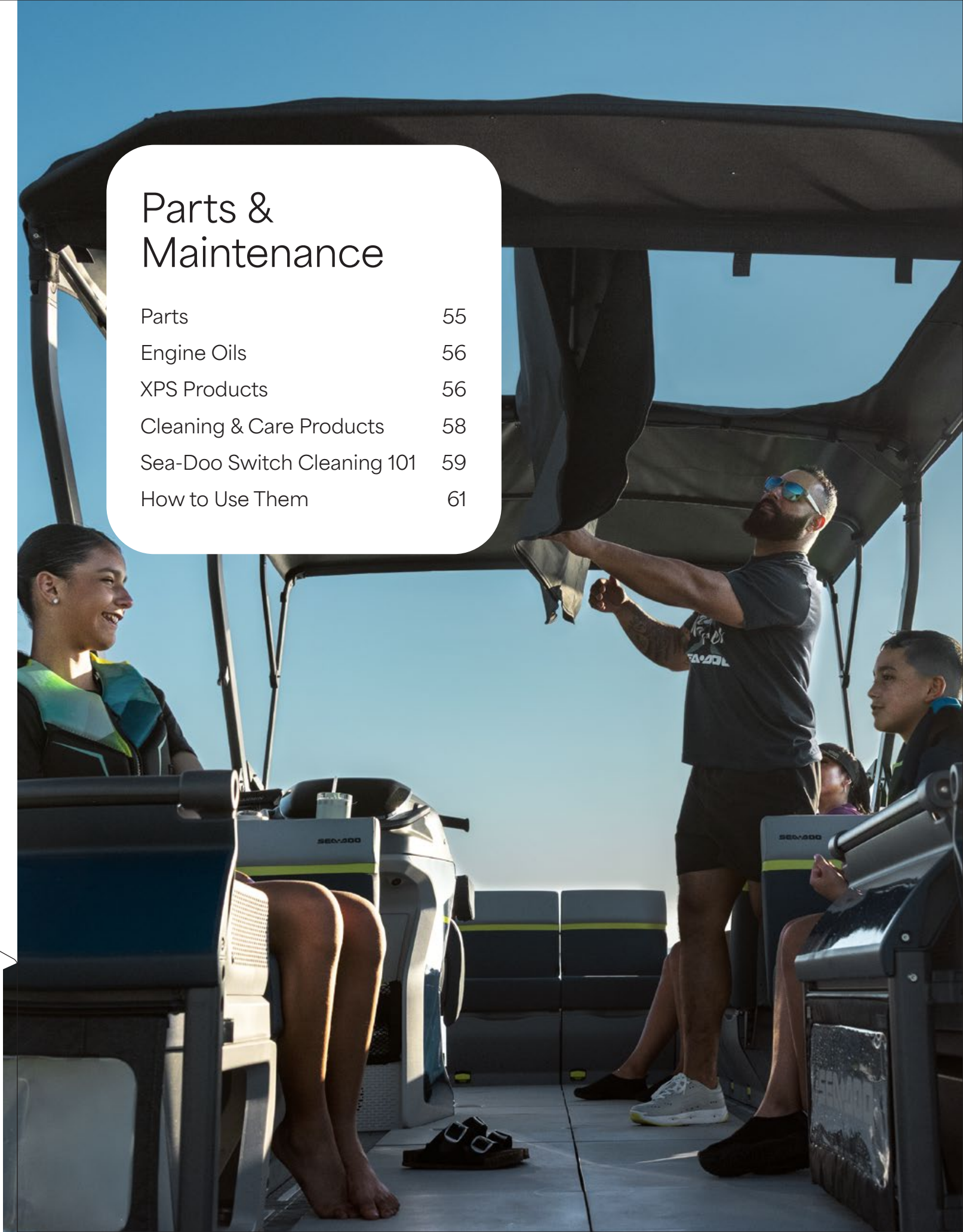




Parts & Maintenance

Parts & Maintenance

Parts	55
Engine Oils	56
XPS Products	56
Cleaning & Care Products	58
Sea-Doo Switch Cleaning 101	59
How to Use Them	61



Parts



Batteries

2024 and up, Yuasa 30 amps (YIX30L)
515176151 N/A

2025 and up, 100 amps (Group 27 AGM battery)
296000465 N/A

- Dual purpose battery to powers both the boat engine and onboard equipment, suitable for partially charged/discharged use.
- Nano-Carbon technology: Increases cold cranking amps (CCA) and reduces recharge time by 25%.
- Premium AGM & VRLA design: Maintenance-free, sealed, and spill-proof for safer installation and transport.
- Enhanced durability: Offers 10 times more vibration resistance than flooded batteries for better performance in rough waters.



Sacrificial Anodes

271001942 \$20.99

- Sacrificial anodes are specifically designed to protect parts of your personal watercraft that are underwater from galvanic corrosion.
- Like the name implies, they essentially "sacrifice" themselves by absorbing the electrochemical process of corrosion to prevent metal components like the impeller, jet pump nozzle or engine from being "eaten away" instead.
- Galvanic corrosion can cause major damage if not controlled.



Impeller

130 or 170 HP - vehicle 13' length
267001083 \$489.99

130 or 170 HP - vehicle 16' or 19' length
267001081 \$489.99

230 HP
267001085 \$619.99

300 HP
267001138 N/A

- High performance impellers designed specifically to enhance engine performance and calibration.
- Offer perfect fit with wear ring and driveshaft components.



Oil Filter

420956744 Rotax 1500 cc and more engines \$25.99

- Premium oil filter for your BRP vehicle.
- Provides superior oil filtration.
- Ask your certified BRP dealer to match the right parts to your watercraft.



Wear Ring

100, 130 and 170 HP
267000419 \$109.99

230 and 300 HP
267000917 \$109.99

- Simple, cost-effective way to keep the pump system operating like new.
- Restore tight clearance to your impeller.
- Reduce cavitation and recover lost performance caused by a worn ring.



NGK[®] Spark Plug

DCP-R8E
715900642 \$8.19

- BRP dealers carry the full line of premium NGK Spark Plugs for Sea-Doo watercraft.

Engine Oils



XPS 4T 5W-40 Full Synthetic Oil Change Kit

Rotax 1500 cc and more engines
9779486

- Ultra-convenient “all-in-one” oil change kit saves time and money.
- Includes XPS Full Synthetic Oil, oil filter, O-rings and washer.



XPS 4T 5W-40 Full Synthetic Oil

9779492 1 US gal / 3.785 L

9779493 1 qt. / 0.946 L

- Designed for high performance off-road, on-road and PWC 4-stroke engines, including turbo or supercharged powersport engines.
- Off-road formula with premium anti-wear and anti-corrosion additives.
- Provides superior engine and transmission protection against rust and corrosion even in extreme conditions.

XPS Products



Extended Life Pre-mixed Coolant

9779150 1 qt. / 0.946 L

- Antifreeze/Coolant contains the correct dilution and the necessary additives to prevent corrosion and inhibit cavitation in BRP cooling systems.
- Long-life, 5-year formula specially formulated for BRP vehicles.
- Superior heat transfer.
- Ideal replacement for vehicles that normally use a 2-year antifreeze/coolant (green).
- 5 years (orange).



Synthetic Grease

9779702 14 fl. oz. / 400 g

- Recommended for marine applications. This synthetic grease provides the best wear protection and water resistance available.



Synthetic Jet Pump Oil

9779221 6 fl. oz. / 178 ml

- Synthetic Jet Pump Oil uses a unique combination of synthetic base stocks and additives that allow higher loads, superior shear stability and reduced oxidation compared to other synthetics and conventional API GL-5 oils.
- Recommended for use in Sea-Doo jet pump requiring oil.



Jet Pump Bearing Grease

9779703 3.7 fl. oz. / 110 ml

- Specially made for high performance jet propulsion systems.
- High performance grease formulated to resist and repel water.
- Prevents the spread of surface oxidation which causes rust and corrosion.



XPS Spline Grease

9779704

- Formulated with molybdenum disulfide and synthetic graphite for maximum durability and long-lasting protection.
- High performance formula that protects against wear, seizure, rust, corrosion, and extreme temperatures.
- Ensures smooth assembly and disassembly, with consistent low-friction performance.



Anti-Corrosive Lubricant

9779701 14 fl. oz. / 400 g

- Multipurpose lubricant that can also be used to prevent rust, corrosion and moisture intrusion.
- It contains extreme pressure additives that work as an all-around lubricant for just about anywhere lubrication is needed.



Fuel Stabilizer

9779171 8 fl. oz. / 236 ml

- Ethanol-compatible and will stabilize fuel in your tank to keep it from breaking down and causing hard starting, throttle hesitation and poor run quality.
- Ethanol attracts moisture, and this product contains powerful anti-corrosion additives to protect fuel system components.
- Prevents problems associated with E10 fuels.

Cleaning & Care Products



Eco-friendly Hull Cleaner

9779300 33 fl. oz. / 946 ml

9779301 2 qt. / 1.89 L

- Removes tough hull and waterline stains from scum, algae, rust and more while being gentle on the environment.
- Deep cleaning formula dissolves grime without heavy scrubbing and is safe for fiberglass, gelcoat, and painted surfaces of your hull.



Wash & Wax

9779310 16 fl. oz. / 473 ml

9779311 2 qt. / 1.89 L

- One step wash and wax is eco-friendly and biodegradable.
- Contains wax and polymers to leave a brilliant shine.
- Safe and effective for all boat surfaces including non-skid, vinyl and canvas.
- Low suds formula rinses easily.



Spray Wax with Polymer

9779320 16 fl. oz. / 473 ml

- This nanotechnology approach combines polymers and wax for superior shine and protection that penetrates and adheres better to outperform other waxes.
- This premium product is perfect for acrylic surfaces, fiberglass, gelcoat, paint or plastic boat surfaces for a long-lasting protective barrier from the elements including the sun's UV rays.
- Safe to use even in direct sunlight.



All-Purpose Cleaner & Degreaser

9779313 22 fl. oz. / 650 ml

9779314 2 qt. / 1.89 L

- Works above and below deck on tough stains, grease and grime.
- Effective on vinyl for mold and mildew too.
- This fast-acting phosphate free eco-friendly formula is safe on all boat surfaces.



Wax & Sealant Nano-polymer

9779319 16 fl. oz. / 473 ml

- Premium polish and sealant for gelcoat, fiberglass and painted surfaces using nanotechnology for surface penetration and adhesion.
- Superior blend of two cross linked polymers, pure wax and silicone for the ultimate shine and longlasting protection.
- Unmatched resistance to marine contaminants like UV rays, salt spray, water spots, bird droppings and insects.



Fabric Waterproofing

9779321 22 fl. oz. / 650 ml

- Restores and preserves boat canvas and fabrics to keep them performing like new.
- Unique fluoropolymer formula restores water repellency, adds UV protection and stain protection and prevents color fading and premature aging of boat fabrics.
- Safe for natural and synthetic fibers, does not affect the fabric's feel, color or breathability.



Multi-Surface & Glass Cleaner

9779316 22 fl. oz. / 650 ml

- Waterless all-purpose polymer cleaning solution for vinyl, paint, glass, plastic and chrome.
- Removes grime easily and leaves a thin protective layer, making future cleaning easier.
- Dries quickly with no streaks or marks left behind.



Vinyl & Plastic UV Protectant

9779317 16 fl. oz. / 473 ml

- Powerful UV blockers protect boat surfaces.
- Leaves a clean, non-greasy, satin finish that restores color and luster and prevents fading and cracking.
- Perfect for synthetic and natural rubber, plus it works on fiberglass, gelcoat and most plastic.
- Anti-static properties repel dust and grime.



Black Plastic & Rubber Restorer

9779335 7.6 fl. oz. / 225 ml

- Restores plastic, rubber and vinyl.
- Long lasting formula.
- Protects against UV rays.
- Brings back the like a new look.

Sea-Doo Switch Cleaning 101

If you've got a Sea-Doo Switch, or honestly, any Sea-Doo, and want to keep it looking fresh and clean, this video's for you. Today, we're breaking it down into three main sections:

- Cleaning - getting rid of grime, sunscreen smudges, algae stains – all the good stuff.
- Protection - how to protect your seats, plastics, and that bimini roof from sun, wear and water.
- Wash & Wax - the final shine to make it look showroom ready.

We'll cover everything from the hull, seats, and plastics to the tiles and just overall tips that make cleanup super easy. Let's get started.



1 Clear-view side panels

CLEAN & PROTECT: XPS Multi-surface & Glass Cleaner
9779316

2 Hull

LIGHT CLEANING: XPS Wash & Wax
9779310
STUBBORN DIRT: XPS Eco-friendly Hull Cleaner
9779300
PROTECT: XPS Vinyl & Plastic UV Protectant
9779317

3 Console area

CLEAN & PROTECT: XPS Multi-surface & Glass Cleaner
9779316

4 Furniture

LIGHT CLEANING: XPS Multi-surface & Glass Cleaner
9779316
STUBBORN DIRT: XPS All-Purpose Cleaner and Degreaser
9779313
PROTECT: XPS Vinyl & Plastic UV Protectant
9779317

5 Deck, deck mats and sun pads

LIGHT CLEANING: XPS Wash & Wax
9779310
STUBBORN DIRT: XPS All-Purpose Cleaner and Degreaser
9779313

6 Plastics and rubbers

RESTORE: Black Plastic & Rubber Restorer
9779335



XPS

CARE



How to Use Them

Spray the All-Purpose Cleaner & Degreaser product directly on the surface, use a soft brush for stubborn dirt, wipe off with a dry or wet cloth. Rinse with water if needed.



All-Purpose Cleaner & Degreaser

9779313 - 22 fl. oz. / 650 ml, 9779314 - 2 qt. / 1.89 L

Mix the Wash & Wax in 30 ml (1 oz.) of cleaner for every 4 L (1 gal) of water used. Scrub the hull and deck with a clean wash mitt or soft brush and rinse thoroughly with water.



Wash & Wax

9779310 - 16 fl. oz. / 473 ml, 9779311 - 22 fl. oz. / 650 ml

Spray the Vinyl & Plastic UV Protectant on surfaces and spread evenly with a dry and clean cloth. Allow five minutes for product to penetrate and wipe any excess with an additional cloth. Allow one to two hours for drying process to be complete.



Vinyl & Plastic UV Protectant

9779317 - 22 fl. oz. / 650 ml

Spray Fabric Waterproofing product on your textile. The fabric must be clean, free of detergent and completely dry before applying waterproofing. Spray the product evenly until the fabric is uniformly wet. Allow 1 hour to dry.



Fabric Waterproofing

9779321 - 16 fl. oz. / 473 ml

Spray the Sea-Doo Hull Cleaner product directly on the hull and allow 2 to 4 minutes to work, then scrub with a brush. Immediately rinse thoroughly with water, ideally with a pressure washer.



Sea-Doo Hull Cleaner

9779309 - 22 fl. oz. / 650 ml

Spray the Multi-Surface and Glass Cleaner directly on the surface and wipe off excess with a clean, soft cloth.



Multi-Surface & Glass Cleaner

9779316 - 22 fl. oz. / 650 ml

Shake well before using the Wax with Polymer. Ensure that the boat or PWC has been properly cleaned and is completely dry before application. Using a dry wax applicator, apply a thin layer over gelcoat and allow 30 minutes to dry, then wipe with a clean and dry microfiber cloth. The product can be applied with a rotary or orbital buffer.



Spray Wax with Polymer

9779320 - 22 fl. oz. / 650 ml

Make sure the surface is clean and dry before applying. Pour the product on a wax applicator pad or clean cloth and apply evenly over surfaces that need to be treated. Keep away from water for a 24 hour period to allow the product to dry.



Black Plastic & Rubber Restorer

9779335 - 22 fl. oz. / 650 ml



XPS

CARE

Notes



Apparel

Apparel

Sizing Chart	66
Find Your Perfect Fit	68
NEW Wave PFD	70
Sea-Doo Wave Grip PFD	71
Protective Gear	72
Sportswear	78
Protective Gear	85
Riding Gear	87
Family Fun	88
Play & Licensing Products	89
Replacements Parts	93

Always use the digital version
of the Product Spec Book for
the most updated information.



Sizing Chart

HOW TO MEASURE

For best results, have someone else take measurements. Measure body in swimsuit or undergarments. Tape must be snug but not tight. If measurements fall between two sizes, order the larger size.

Chest

Measure under your arms, around the fullest part of your chest.

Waist

Measure around your waist at the narrowest place.

Hips

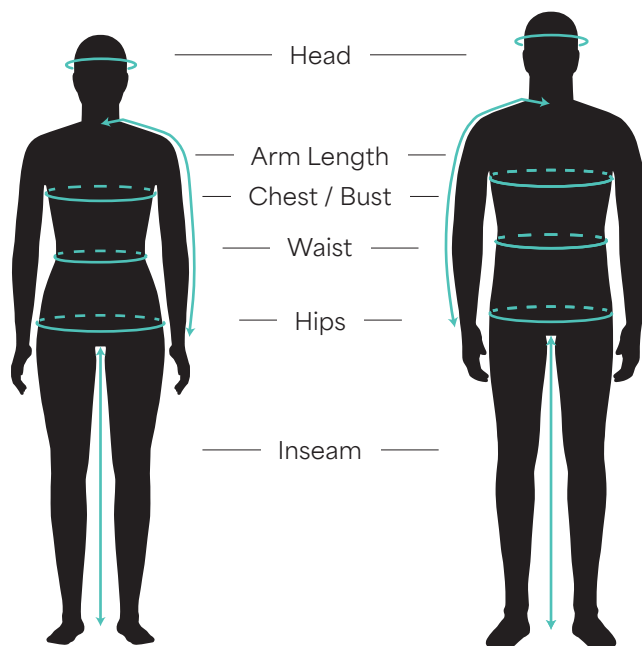
Stand with legs together, measure around the widest part of your hips, ensuring the tape is level.

Arm Length

Let your arms hang down at your sides in a slightly bent position. Measure from the center of the back of your neck, along the length of your arm, to the wrist.

Inseam

Without shoes, from crotch to the floor.



What code represents your style?

- 1 Find your size and color.
- 2 The corresponding code is THE CODE you use to complete the part number on your order.

Example:
287029 (style number Sea-Doo Wave Grip PFD)
06 (sizing code M)
76 (color code Aqua)

	Style	Size	Color
Full sku:	287029	06	76

SIZE APPAREL

Adult		Adult		Youth/Kids	
Size	Code	Size	Code	Size	Code
ONE SIZE	00	3XL	16	3-4	79
2XS	01	4XL	18	5-6	52
XS	02	XS/S	90	7-8	54
S	04	S/M	72	10-12	49
M	06	M/L	91	14-16	50
L	09	L/XL	73		
XL	12	2XL/3XL	74		
2XL	14				

SIZE FOOTWEAR

Size	Code
5	24
6	25
7	27
8	28
9	29
10	30
11	31
12	32
13	33

COLORS

Name	Code	Name	Code	Name	Code
Clear	00	Magnesium	24	Aqua	76
White	01	Lilac	25	Army Green	77
Brown	04	Hi-Vis Yellow	26	Denim Blue	79
Charcoal Grey	07	Heather Charcoal	29	Blue	80
Silver	08	Red	30	Light Blue	81
Grey	09	Pink	36	Indigo Blue	82
Yellow	10	Ice	38	Royal Blue	83
Gold	11	Violet	41	Navy	89
Orange	12	Deep Purple	42	Black	90
Coral	13	Smoke	57	Black with Graphics	94
Lava Red	17	Green	70	Amber	95
Mixed Color	18	Teal	74	Ivory	97
Mirror Silver	22				

MEN'S - APPAREL

Sizes	XS	S	M	L	XL	2XL	3XL	4XL
Sizing Code*	02	04	06	09	12	14	16	18
Chest (in.)	31-33	34-36	38-40	42-44	46-48	50-52	54-56	58-60
Waist (in.)	27 ½-28 ½	29 ½-30 ½	32 ½-34 ½	36 ½-39	41 ½-43 ½	46-48	50 ½-52 ½	54-57
Hips (Seat) (in.)	31 ½-32 ½	33 ½-35 ½	37 ½-39 ½	41 ½-43 ½	45-46 ¾	48 ½-50 ½	52 ½-54 ½	56 ½-58 ½
Arm Length (in.)	30 ½	32 ½	33	33 ½	34 ½	35	36	36 ½
Inseam (in.)	30 ½	32	32	32	32	32	32	32

*Codes to complete the part number on your order.

LADIES' - APPAREL

Sizes	XS	S	M	L	XL	2XL
Sizing Code*	02	04	06	09	12	14
Chest (in.)	33 ½-34 ½	35 ½-36 ½	37 ½-39	41-43	45-47	49-41 ½
Waist (in.)	27-28	29-30	31-32 ½	34 ½-36 ½	39-41 ½	43 ½-45 ½
Hips (Seat) (in.)	36 ½-37 ½	38 ½-39 ½	40 ½-42	43-45 ½	47-49 ½	51 ½-53 ½
Arm Length (in.)	30 ½	30 ½	31	31 ½	32 ½	32 ½
Inseam (in.)	30	30	30	30	30	30

*Codes to complete the part number on your order.

PFD sizing information is available on page 77.
 Shoe sizing information is available on page 85.
 Glove sizing information is available on page 87.



Did you know?

We redefined our fit for all of our new collections. You now have three categories for our riding gear and sportswear items. You can find the fit of each style in their description so you know what you are getting.

FIT GUIDE

Sportswear

SLIM

REGULAR

RELAXED

Riding Gear

FITTED

REGULAR

RELAXED

Find Your Perfect Fit

When it comes to choosing a personal flotation device (PFD), it's all about how you ride. Do you go for maximum mobility or all-day comfort? Lightweight performance or budget-friendly durability? Our comparison chart makes it easy to decide.

From premium materials to sleek designs, every Sea-Doo life jacket is built for safety and style—so you can look great, feel great, and ride your way.



	EXPLORER AIRFLOW The perfect mix of comfort and adventure	AIRFLOW For ultimate comfort	WAVE GRIP For comfort of the driver and the passenger
Comfort level	<div><div></div><div></div><div></div><div></div><div></div></div>	<div><div></div><div></div><div></div><div></div><div></div><div></div></div>	<div><div></div><div></div><div></div><div></div><div></div><div></div></div>
Price	<div><div></div><div></div><div></div><div></div><div></div><div></div></div>	<div><div></div><div></div><div></div><div></div><div></div><div></div></div>	<div><div></div><div></div><div></div><div></div><div></div><div></div></div>
Lumbar comfort zone	Yes	Yes	No
Airflow pads	Yes	Yes	No
Explorer package	Yes	No	No
Passenger handles	No	No	Yes
Chest pocket	No	No	Yes
Outer material	Ecoprene	Ecoprene	Ecoprene
Segmented ergonomic panels	10	10	
Types of interior layers for floating	3D Single Layer Float Biosoft Foam	3D Single Layer Float Biosoft Foam	Multi-Layers Float Foam

Our PFDs at a Glance

Comb through this chart to determine the life jacket that best fits your Sea-Doo Life. There's one for every type of rider—what's yours?

All our PFDs have large armholes for riding comfort and are Coast Guard approved!



WAVE

For freedom of movement

EXPLORER

For any adventure

MOTION

Durable yet comfortable

<div><div><div></div><div></div><div></div><div></div><div></div></div><div><div>\$</div><div>\$</div><div></div><div></div><div></div></div></div>	<div><div><div></div><div></div><div></div><div></div><div></div></div><div><div>\$</div><div>\$</div><div></div><div></div><div></div></div></div>	<div><div><div></div><div></div><div></div><div></div><div></div></div><div><div>\$</div><div></div><div></div><div></div><div></div></div></div>
No	No	No
No	No	No
No	Yes	No
No	No	No
Yes	No	No
Evogrene	Ripstop Nylon	Polyester
6	4	4
Multi-Layers Float Foam	Multi-Layers Float Foam	Multi-Layers Float Foam

NEW Wave PFD

The new Wave PFD is the new definition of freedom. Offering comfort and more value for the PWC rider!

Chest card pocket for convenience.

Durable YKK front zipper.

Six segmented panels for comfort and ease of movement.

Side panels in stretch lining for better comfort.

Loop at back neck to attach goggles.

D-ring for key lanyard.



Sea-Doo Wave Grip PFD

The new Sea-Doo Wave Grip provides comfort for everyone. Whether you are the driver or the passenger, this PFD will be perfect for you.



Lumbar comfort zone.



Chest card pocket for convenience.

Multi-layers float foam inserts.

Side panels in stretch fabric for improved comfort.

Segmentations at front and back for better comfort and ease of movement.

Side passenger handles.

D-ring for key lanyard.

Protective Gear



Black (90)

Sea-Doo Wave Grip PFD (US/CA)

287029 XS, S, M, L, XL, 2XL

Ecoprene PFD with passenger handles.

- Environmentally friendly ecoprene material that is rubber free, flexible, lightweight, breathable and quick dry.
- Side passenger handles.
- Chest pocket.
- Combination of PVC and polyethylene foam inserts.
- UTAK material will drain away excess water for quick drying and thermal regulated comfort.
- Comfortable fit.
- YKK front zipper.
- Segmentations at front and back for better comfort and ease of movement.
- Side panels in stretch lining fabric for improved comfort.
- Armholes cut large for riding comfort.
- Loop at back neck to attach your goggles to your vest.
- D-ring for key lanyard.
- Coast Guard approved.
- Shell: 100% polyester.
- Insulation: 20% PVC, 80% expandable polyethylene.

NEW



Silver (08)

Sea-Doo Wave Grip PFD (US/CA)

960009 XS, S, M, L, XL, 2XL

Evogrene PFD with passenger handles.

- Environmentally friendly Evogrene material that is made from recycled.
- Post-consumer plastic bottles into a performance fiber.
- Side passenger handles.
- Chest pocket.
- Combination of single layer float soft foam and multi-layers float foam inserts.
- UTAK material will drain away excess water for quick drying and thermal regulated comfort.
- Comfortable fit.
- YKK front zipper.
- Segmentations at front and back for better comfort and ease of movement.
- Side panels in stretch lining fabric for improved comfort.
- Armholes cut large for riding comfort.
- Loop at back neck to attach your goggles to your vest.
- D-ring for key lanyard.
- Coast Guard approved.
- Shell: 100% polyester.
- Insulation: 20% PVC, 80% expandable polyethylene.

NEW



Black (90), Blue (80), Pink (36), Red (30)

Sea-Doo Wave PFD (US/CA)

287037 XS, S, M, L, XL, 2XL

Ultra-durable and Light Evogrene PFD.

- Environmentally friendly Evogrene material that made from recycled.
- Post-consumer plastic bottles into a performance fiber.
- Chest pocket.
- Combination of single layer float soft foam and multi-layers float foam inserts.
- UTAK material will drain away excess water for quick drying and thermal regulated comfort.
- Comfortable fit.
- YKK front zipper.
- Segmentations at front and back for better comfort and ease of movement.
- Side panels in stretch lining fabric for improved comfort.
- Armholes cut large for riding comfort.
- Loop at back neck to attach your goggles to your vest.
- D-ring for key lanyard.
- Coast Guard approved.
- Shell: 100% polyester.
- Insulation: 20% PVC, 80% expandable polyethylene.

PFD Size Guide

Size recommendation:

Your PFD should fit snug around your body while providing comfort.

Your chest width is the key driver to define your PFD size. Measure the circumference of your chest at its widest point. Use our size chart to determine which size is closest to your measurement. If you fall in between two sizes we recommend you choose the smaller one. For safety purposes, a properly sized PFD should fit like a glove, stay in place but allow you to move freely.

How to fit:

When trying on a PFD, loosen all straps, put it on and zip or buckle it up. Afterwards adjust all straps. PFDs have adjustable features to tighten it further around your chest and belly if needed.



Hi-Vis Yellow (26)

Sea-Doo Explorer Airflow PFD (US/CA)

287007 XS, S, M, L, XL, 2XL, 3XL

Soft and light PFD with an ultradurable ecoprene outer shell.

- Environmentally friendly ecoprene material that is rubber free, flexible, lightweight, breathable and quick dry.
- Vest interior constructed of eco-friendly single layer float biosoft foam.
- AIRFLOW SYSTEM: Interior EVA molding that keeps the life jacket's surface away from the skin.
- LUMBAR COMFORT ZONE: Extra foam padding to minimize the pressure on your lower back while bolstering support.
- MESH PANEL: Drain away excess water for quick drying and thermal regulated comfort.
- Comfortable fit.
- YKK front zipper.
- Side panels in stretch lining fabric for improved comfort.
- Armholes cut large for riding comfort.
- Camera mount.
- Whistle.
- Handheld VHF radio holder.
- Loop at back neck to attach your goggles to your vest.
- D-ring for key lanyard.
- Multiple pockets.
- Coast Guard approved.
- Shell: 100% polyester.
- Insulation: 100% Gaia foam.



Orange (12)

Explorer Airflow PFD (US/CA)

287009 XS, S, M, L, XL, 2XL, 3XL

Soft and light PFD with a ultradurable ecoprene outer shell.

- Environmentally friendly ecoprene material that is rubber free, flexible, lightweight, breathable and quick dry.
- Vest interior constructed of eco-friendly single layer float biosoft foam.
- AIRFLOW SYSTEM: Interior EVA molding that keeps the life jacket's surface away from the skin.
- LUMBAR COMFORT ZONE: Extra foam padding to minimize the pressure on your lower back while bolstering support.
- MESH PANEL: Drain away excess water for quick drying and thermal regulated comfort.
- Comfortable fit.
- YKK front zipper.
- Side panels in stretch lining fabric for improved comfort.
- Armholes cut large for riding comfort.
- Camera mount.
- Whistle.
- Handheld VHF radio holder.
- Loop at back neck to attach your goggles to your vest.
- D-ring for key lanyard.
- Multiple pockets.
- Coast Guard approved.
- Shell: 100% polyester.
- Insulation: 100% Gaia foam.



Hi-Vis Yellow (26)

Airflow Sunset Edition PFD (US/CA)

287011 XS, S, M, L, XL, 2XL, 3XL

Soft and light PFD with a ultra-durable ecoprene outer shell and the new Sunset Edition.

- Environmentally friendly ecoprene material that is rubber free, flexible, lightweight, breathable and quick dry.
- Vest interior constructed of eco-friendly single layer float biosoft foam.
- AIRFLOW SYSTEM: Interior EVA molding that keeps the life jacket's surface away from the skin.
- LUMBAR COMFORT ZONE: Extra foam padding to minimize the pressure on your lower back while bolstering support.
- MESH PANEL: Drain away excess water for quick drying and thermal regulated comfort.
- Comfortable fit.
- YKK front zipper.
- Side panels in stretch lining fabric for improved comfort.
- Armholes cut large for riding comfort.
- Loop at back neck to attach your goggles to your vest.
- D-ring for key lanyard.
- Coast Guard approved.
- Shell: 100% polyester.
- Insulation: 100% Gaia Foam.



PFD sizing information is available on page 77.



Grey (09)

Sea-Doo Airflow PFD (US/CA)**285984** XS, S, M, L, XL, 2XL, 3XL

Soft and light PFD with a ultra-durable ecoprene outer shell.

- Environmentally friendly ecoprene material that is rubber free, flexible, lightweight, breathable and quick dry.
- Vest interior constructed of eco-friendly single layer float biosoft foam.
- AIRFLOW SYSTEM: Interior EVA molding that keeps the life jacket's surface away from the skin.
- LUMBAR COMFORT ZONE: Extra foam padding to minimize the pressure on your lower back while bolstering support.
- MESH PANEL: Drain away excess water for quick drying and thermal regulated comfort.
- Comfortable fit.
- YKK front zipper.
- Side panels in stretch lining fabric for improved comfort.
- Armholes cut large for riding comfort.
- Loop at back neck to attach your goggles to your vest.
- D-ring for key lanyard.
- Coast Guard approved.
- Shell: 100% polyester.
- Insulation: 100% Gaia foam.



Black (90)

Airflow PFD (US/CA)**285998** XS, S, M, L, XL, 2XL, 3XL

Soft and light PFD with a ultra-durable ecoprene outer shell.

- Environmentally friendly ecoprene material that is rubber free, flexible, lightweight, breathable and quick dry.
- Vest interior constructed of eco-friendly single layer float biosoft foam.
- AIRFLOW SYSTEM: Interior EVA molding that keeps the life jacket's surface away from the skin.
- LUMBAR COMFORT ZONE: Extra foam padding to minimize the pressure on your lower back while bolstering support.
- MESH PANEL: Drain away excess water for quick drying and thermal regulated comfort.
- Comfortable fit.
- YKK front zipper.
- Side panels in stretch lining fabric for improved comfort.
- Armholes cut large for riding comfort.
- Loop at back neck to attach your goggles to your vest.
- D-ring for key lanyard.
- Coast Guard approved.
- Shell: 100% polyester.
- Insulation: 100% Gaia foam.

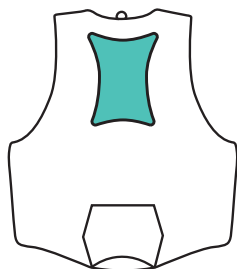


Blue (80), Lava Red (17), Orange (12)

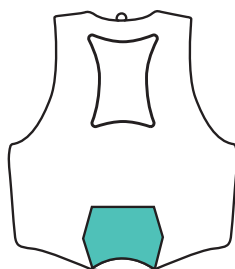
Sea-Doo Airflow Sun Ed. PFD (US/CA)**285988** XS, S, M, L, XL, 2XL, 3XL

Soft and light PFD with a ultra-durable ecoprene outer shell and the new Sunset Edition.

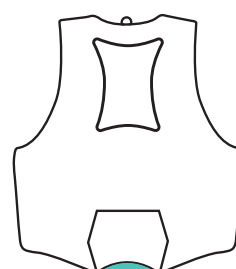
- Environmentally friendly ecoprene material that is rubber free, flexible, lightweight, breathable and quick dry.
- Vest interior constructed of eco-friendly single layer float biosoft foam.
- AIRFLOW SYSTEM: Interior EVA molding that keeps the life jacket's surface away from the skin.
- LUMBAR COMFORT ZONE: Extra foam padding to minimize the pressure on your lower back while bolstering support.
- MESH PANEL: Drain away excess water for quick drying and thermal regulated comfort.
- Comfortable fit.
- YKK front zipper.
- Side panels in stretch lining fabric for improved comfort.
- Armholes cut large for riding comfort.
- Loop at back neck to attach your goggles to your vest.
- D-ring for key lanyard.
- Coast Guard approved.
- Shell: 100% polyester.
- Insulation: 100% Gaia foam.

**AIRFLOW SYSTEM**

Keeps the life jacket's surface away from the skin for a drier, more comfortable ride.

**LUMBAR COMFORT ZONE**

Extra padding to minimize the pressure on your lower back and bolster support.

**MESH PANEL**

Drain away excess water for quick drying and thermal regulated comfort.



Black (90)

Sea-Doo Explorer PFD (US/CA)**285964** XS, S, M, L, XL, 2XL, 3XL, 4XL

PFD made of Heavy-duty Rip-stop Nylon outer shell.

- Heavy-duty rip-stop nylon material.
- Multi-layers float foam inserts.
- Segmented foam at back bottom for increased comfort while seated.
- Armholes cut large for riding comfort.
- Camera mount.
- Whistle.
- Handheld VHF radio holder.
- Loop at back neck to attach your goggles to your vest.
- D-ring for key lanyard.
- Multiple pockets.
- Coast Guard approved.
- Shell: 100% nylon.
- Insulation: 100% expandable polyethylene.



Black (90), Hi-Vis Yellow (26)

Sea-Doo Motion PFD (US/CA)**285976** XS, S, M, L, XL, 2XL, 3XL, 4XL

PFD with heavy-duty nylon outer shell.

- Heavy-duty nylon material.
- Multi-layers float foam inserts.
- Armholes cut large for riding comfort.
- Loop at back neck to attach your goggles to your vest.
- Coast Guard approved.
- Shell: 100% nylon.
- Insulation: 100% expandable polyethylene.



Orange (12)

Type II Adult Life Jackets - 4 pack**287000** One size (CA)**285982** One size (US)

Ideal in calm, inland areas for boating, not approved for PWC.

Approved by the Coast Guard. Type II life jacket.

- Fits adult 90 lb +, 30" – 50" chest.
- Set of four orange life jacket's.
- Clear storage bag with mesh opening for ventilation with strap across the top of the bag makes it easy to carry.
- Ideal in calm, inland areas for boating, not approved for PWC.
- Coast Guard approved.
- Shell: 100% polyester.
- Insulation: 50% PVC, 50% expandable polyethylene.



Yellow (10)

Sea-Doo TYPE IV Throwable Foam Cushion (US)**287006** One size

US Coast Guard approved type IV throwable flotation device.

- * SOLD FOR UNITED-STATES ONLY *
- Polyester outer shell withstands abrasion.
- Color: Yellow.
- Comfortable seat cushion.
- Shell: 100% polyester.
- Insulation: 100% expandable polyethylene.



Black (90)

Junior Freedom PFD (US/CA)

287030 L (55-88 lb) (25-40 kg)

PFD made of ultra-durable ecoprene outer shell for kids.

- Environmentally friendly ecoprene material that is rubber free, flexible, lightweight, breathable and quick dry.
- Ease of movement.
- Fitted.
- YKK front zipper.
- For kids of 55 to 88 lb.
- Coast Guard approved.



Black (90), Hi-Vis Yellow (26)

Sea-Doo Junior Freedom PFD (US/CA)

285972 L (55-88 lb) (25-40 kg)

PFD made of ultra-durable ecoprene outer shell for kids.

- Environmentally friendly ecoprene material that is rubber free, flexible, lightweight, breathable and quick dry.
- Ease of movement.
- Fitted.
- Combination of single layer float soft foam and multi-layers float foam inserts.
- YKK front zipper.
- Armholes cut large for riding comfort.
- For kids of 55 to 88 lb.
- Coast Guard approved.
- Shell: 100% polyester.
- Insulation: 50% PVC, 50% expandable polyethylene.



Black (90)

Kids' Freedom PFD (US/CA)

287031 M (33-55 lb) (15-25 kg)

PFD made of ultra-durable ecoprene outer shell for kids.

- Environmentally friendly ecoprene material that is rubber free, flexible, lightweight, breathable and quick dry.
- Ease of movement.
- Fitted.
- YKK front zipper.
- For kids of 33 to 55 lb.
- Coast Guard approved.



Black (90), Hi-Vis Yellow (26)

Sea-Doo Kids' Freedom PFD (US/CA)

287004 M (33-55 lb) (15-25 kg)

PFD made of ultra-durable ecoprene outer shell for kids.

- Environmentally friendly ecoprene material that is rubber free, flexible, lightweight, breathable and quick dry.
- Ease of movement.
- Fitted.
- Combination of single layer float soft foam and multi-layers float foam inserts.
- YKK front zipper.
- Armholes cut large for riding comfort.
- For kids of 33 to 55 lb.
- Coast Guard approved.
- Shell: 100% polyester.
- Insulation: 50% PVC, 50% expandable polyethylene.



KIDS'



Navy (89)

Sea-Doo Kids' Sandsea PFD (CA)**285951** S (9-14 kg) (CA)**285949** S (0-30 lb) (0-14 kg) (US)

PFD made of heavy-duty nylon outer shell for kids.

- Heavy-duty nylon material.
- Multi-layers float foam inserts.
- Armholes cut large for comfort.
- Life jacket size Small: comes with Coast Guard approved pillow. Certified for general boating use, not watercraft.
- Coast Guard approved.
- Child/Infant/Youth with pillow.
- CE approved EN395 standard.
- Shell: 100% nylon.
- Insulation: 100% expandable polyethylene.

KIDS'



Charcoal Grey (07)

Sea-Doo Kids' Sandsea PFD (US/CA)**285950** M (33-55 lb) (15-25 kg), L (55-88 lb) (25-40 kg)

PFD made of heavy-duty polyester outer shell for kids.

- Heavy-duty polyester material.
- Multi-layers float foam inserts.
- Armholes cut large for comfort.
- Life jacket size Small: comes with Coast Guard approved pillow. Certified for general boating use, not watercraft.
- Coast Guard approved.
- Shell: 100% polyester.
- Insulation: 100% expandable polyethylene.

PERSONAL FLOTATION DEVICE

Unisex size for Freedom, Airflow, Wave, Motion and Explorer life jackets

Unisex Sizes	2XS	XS	S	M	L	XL	2XL	3XL	4XL
Men's Sizes	2XS	XS	S	M	L	XL	2XL	3XL	4XL
Women's Sizes	XS	S	M	L	XL	2XL	3XL	4XL	5XL
Sizing Code*	01	02	04	06	09	12	14	16	18
Chest (in.)	27-30	30-33	33-37	37-41	41-45	45-49	49-53	53-58	57-61

Unisex size for Navigator life jackets only

Unisex Sizes	XS	S/M	L/XL	2XL/3XL
Men's Sizes	XS/S	S/M	L/XL	2XL/3XL
Women's Sizes	S	M/L	XL/2XL	3XL/4XL
Sizing Code*	02	72	73	74
Chest (in.)	28-32	32-40	40-52	50-60

Jr. and Kids' Freedom

Sizes	M	L
Sizing Code*	06	09
Weight	33-55 lb	55-88 lb

Kids' Sandsea

Sizes	S	M	L
Sizing Code*	04	06	09
Weight	0-30 lb	30-50 lb	50-90 lb

Please refer to the product for size availability.
 *Codes to complete the part number on your order.

Sportswear



Charcoal Grey (07), Navy (89)

Men's Sea-Doo Long Sleeve Rashguard

288056 S, M, L, XL, 2XL

Long Sleeve Rashguard with loose fit.

- Content: 87% polyester, 13% spandex, 210 gsm.
- Fit: Relaxed.
- UV protection - 50 UPF.
- 4-way stretch.
- Quick dry.
- Large Sea-Doo logo on the sleeve.



Black with Graphics (94), Magnesium (24)

Men's Short Sleeve Rashguard Signature

454487 S, M, L, XL, 2XL

Short Sleeve Rashguard with loose fit.

- Content: 92% polyester, 8% spandex.
- Fit: Relaxed.
- UV protection - 50 UPF.
- 4-way stretch.
- Quick dry.
- Sea-Doo logo at center chest.



Black (90), Charcoal Grey (07)

Men's Long Sleeve Rashguard Signature

454459 S, M, L, XL, 2XL

Long Sleeve Rashguard with loose fit.

- Content: 92% polyester, 8% spandex.
- Fit: Relaxed.
- UV protection - 50 UPF.
- 4-way stretch.
- Quick dry.
- Sea-Doo logo at center chest.



Black (90), Coral (13), Hi-Vis Yellow (26)

Women's Sea-Doo Long Sleeve Rashguard

288058 S, M, L, XL

Long Sleeve Rashguard with loose fit.

- Content: 87% polyester, 13% spandex, 210 gsm.
- Fit: Relaxed.
- UV protection - 50 UPF.
- 4-way stretch.
- Quick dry.
- Large Sea-Doo logo on the sleeve.



Black (90), Lilac (25)

Women's Short Sleeve Rashguard Signature

454484 S, M, L, XL

Ladies' Short Sleeve Rashguard with regular fit.

- Content: 87% polyester, 13% spandex, 210 gsm.
- Fit: Relaxed.
- UV protection - 50 UPF.
- 4-way stretch.
- Sea-Doo logo at center front chest.



Lilac (25), White (01)

Women's UV Protection Long Sleeve Shirt

288100 XS, S, M, L, XL, 2XL

Women's long sleeves with sun protection features.

- Content: 92% polyester, 8% spandex.
- Fit: Relaxed.
- UPF 50 sun protection.
- Quick dry fabric that helps distribute your body heat and rapidly cools through regulated evaporation.
- Thumbhole opening at sleeve.
- Sea-Doo logo at bottom left.
- Mesh insert at chest.
- Raglan sleeve.

NEW



Magnesium (24), Navy (89)

Men's Sea-Doo Technical Fishing Pocket Tee

288251 S, M, L, XL, 2XL, 3XL

New addition in our fishing inspired capsule, a technical pocket tee for men. Super soft, silky smooth and lightweight.

- Content: 77% polyester, 18% Lyocell, 5% spandex, 160 gsm.
- Fit: Regular.
- All-over print on chest pocket and logo Sea-Doo on right sleeve.

NEW



Denim Blue (79), Heather Grey (27)

Men's Sea-Doo Fishing T-Shirt

288252 S, M, L, XL, 2XL, 3XL

Men's casual graphic T-shirt with artwork at back.

- Solid color: 60% cotton, 40% polyester.
- Heather color: 97% cotton, 3% polyester.
- Fit: Slim.
- Ribbed collar.
- Sea-Doo logo at left chest and fishing inspired artwork at back.

NEW



Magnesium (24), Navy (89)

Men's Sea-Doo Fishing UV LS

288254 S, M, L, XL, 2XL, 3XL

Men's Sea-Doo UV Long Sleeve with artwork at front.

- Content: 88% polyester, 12% spandex, 150 gsm.
- Fit: Relaxed.
- UPF 50 sun protection.
- Quick dry fabric that helps distribute your body heat and rapidly cools through regulated evaporation.
- Raglan sleeve.
- Fish artwork printed at front.



Black (90), Magnesium (24)

Men's UV Protection Hooded Shirt

454659 S, M, L, XL, 2XL

UV Protection Hooded Shirt, ideal to keep you safe with comfort.

- Content: 92% polyester, 8% spandex, 175 gsm.
- Fit: Relaxed.
- UV protection - 50 UPF.
- Quick dry.
- Built-in gaiter mask.
- Sea-Doo logo at center chest.

NEW



Magnesium (24), Navy (89)

Unisex Fishing Curved Mesh Cap

288290 One size

Casual Mesh Cap with patch at front.

- Content: 100% cotton.
- Solid colored cap with contrasting mesh panel.
- Fishing inspired patch embroidered at front.
- Snapback closure at back.



Grey (09)

Unisex Sea-Doo Fishing Hat

454673 One size

Lightweight and breathable fishing hat.

- Content: 100% polyester.
- Detachable chin cord with toggle.
- Floating brim.
- Removable neck flap to protect you from the elements.
- UV protection - 40 UPF.
- Vent opening at back.
- Sea-Doo logo at center front.



Black (90), Smoke (57)

Unisex Sea-Doo Rag

454690 One size

Quick dry Sea-Doo Rag.

- Content: 100% polyester.
- Lightweight, moisture-wicking, breathable fabric.
- UV protection – 50 UPF.
- Instantly transform into a headband or a facemask.

NEW



Navy (89), White (01)

Men's Good Times Sea-Doo T-Shirt

288261 S, M, L, XL, 2XL, 3XL

Men's casual graphic T-shirt with artwork at front.

- Content: 60% cotton, 40% polyester.
- Fit: Slim.
- Ribbed collar.
- Sea-Doo artwork with palm trees and quote at front.

NEW



Black (90), White (01)

Men's Live The Sea-Doo Life T-Shirt

288266 S, M, L, XL, 2XL, 3XL

Men's casual graphic T-shirt with artwork at front.

- Content: 60% cotton, 40% polyester.
- Fit: Slim.
- Ribbed collar.
- Sea-Doo quote at front.

NEW



Black (90), Smoke (57)

Men's Sea-Doo Polo

288257 S, M, L, XL, 2XL, 3XL

Men's Sea-Doo Polo quick-dry and anti-microbial.

- Content: 97% polyester, 3% spandex, 190 gsm.
- Fit: Regular.
- Button-down collar.
- Sea-Doo logo.



Black (90), Orange (12), Sand (03), Turquoise (Aqua) (76)

Men's Signature Pullover Hoodie

288186 S, M, L, XL, 2XL, 3XL

Comfortable Sea-Doo Hoodie.

- Content: 80% cotton, 20% polyester.
- Fit: Relaxed.
- Rib at cuffs and hem.
- Kangaroo pocket.
- Sea-Doo logo at center front.

NEW



Black (90), Denim Blue (79), White (01)

Men's Sea-Doo Signature T-Shirt

288359 S, M, L, XL, 2XL, 3XL

Our classic men's signature T-shirt with Sea-Doo logo at center front.

- Content: 60% cotton, 40% polyester.
- Fit: Slim.
- Ribbed collar.
- Sea-Doo logo at front.



Navy (89), Orange (12)

Men's Lightweight Crew Tank Top

288017 S, M, L, XL, 2XL

Men's lightweight tank top.

- Content: 85% polyester and 15% spandex.
- Fit: Regular.
- UPF 30 sun protection.
- Quick dry fabric that helps distribute your body heat and rapidly cools through regulated evaporation.
- Easy care.
- Sea-Doo logo on the right shoulder.



Lilac (25), Turquoise (Aqua) (76), Wine (32)

Women's Signature Pullover Hoodie

288246 XS, S, M, L, XL, 2XL

Comfortable Sea-Doo Hoodie.

- Content: 80% cotton, 20% polyester.
- Fit: Relaxed.
- Rib at cuffs and hem.
- Kangaroo pocket.
- Sea-Doo logo on the arm and at the back.

NEW



White (01), Wine (32)

Women's Good Times Sea-Doo T-Shirt

288263 XS, S, M, L, XL, 2XL

Women's casual graphic T-shirt with artwork at front.

- Content: 60% cotton, 40% polyester.
- Fit: Slim.
- Ribbed collar.
- Sea-Doo artwork with palm trees and quote at front.

NEW



Black (90), Wine (32)

Women's Sea-Doo Signature T-Shirt

288369 XS, S, M, L, XL, 2XL

Our classic women's signature T-shirt with Sea-Doo logo at center front.

- Content: 60% cotton, 40% polyester.
- Fit: Slim.
- Ribbed collar.
- Sea-Doo logo at front.



Coral (13), Lilac (25)

Women's Racerback Tank

454701 XS, S, M, L, XL, 2XL

Ladies' Racerback Tank with a relaxed fit.

- Content: 77% polyester, 18% tencel, 5% spandex.
- Fit: Relaxed.
- Breathable, lightweight and comfortable fabric.
- Moisture wicking and quick-dry.
- Longer at back.



Navy (89)

Youth Long Sleeve Rashguard

454676 3-4, 5-6, 7-8, 10-12, 14-16

UV Protection Youth Long Sleeve Rashguard ideal for keeping your child safe and comfortable.

- Content: 87% polyester, 13% spandex, 210 gsm.
- Fit: Relaxed.
- Fit: Loose fit.
- UV protection - 50 UPF.
- Raglan sleeve.
- Sea-Doo logo at front.



Hi-Vis Yellow (26)

Unisex Sea-Doo Quick Dry Poncho by Slowtide

288059 S/M, L/XL

Unisex quick dry Sea-Doo poncho by Slowtide.

- Content: 80% polyester, 20% polyamide.
- Fit: Relaxed.
- Hood drawcord adjustment.
- Button closure.
- Two pockets at front.
- Patch with Slowtide logo at left chest.
- Sea-Doo logo at front.
- Quick dry.



Lilac (25), Navy (89)

Youth Palm Curved Cap

288217 One size

Youth snapback curved cap.

- Content: 100% cotton.
- Palm tree and Sea-Doo logo embroidery at front.
- Sea-Doo patch embroidered at front.
- Contrasted brim.
- Snapback closure.



Black with Graphics (94), Hi-Vis Yellow (26), Royal Blue (83)

Sea-Doo Quick Dry Towel by Slowtide

288062 One size

Sea-Doo quick dry towel by Slowtide.

- Content: 80% polyester, 20% polyamide.
- Woven label with Slowtide logo at bottom right.
- Centered Sea-Doo logo.
- Quick dry.



Navy (89), White (01)

Youth Live The Sea-Doo Life T-Shirt

288373 7-8, 10-12, 14-16

Casual Sea-Doo Graphic T-shirt for youth.

- Content: 60% cotton, 40% polyester.
- Fit: Regular.
- Ribbed collar.
- Colorful Sea-Doo quote at front.



Black with Graphics (94), Turquoise (Aqua) (76)

Kid's Sea-Doo Quick Dry Poncho by Slowtide

288061 One size

Youth quick dry Sea-Doo poncho by Slowtide.

- Content: 80% polyester, 20% polyamide.
- Fit: Relaxed.
- Kangaroo pocket at front.
- Patch with Slowtide logo at left chest.
- Sea-Doo logo at front.
- Quick dry.



Black (90)

Unisex Sea-Doo Sets Us Free Straw Hat

288219 S/M, M/L

Wide brim straw hat with adjustable chin strap.

- Sea-Doo Sets Us Free embroidered patch at front.



Black with Graphics (94)

Unisex Sea-Doo Straw Hat

454792 S/M, M/L

Wide brim straw hat with adjustable chin strap.

- Sea-Doo logo at front.
- Printed fabric under brim.



Black (90), White (01)

Unisex Sea-Doo Reversible Bucket Hat

288221 S/M, M/L

Reversible bucket hat.

- Content: 100% polyester.
- UPF 40 sun protection.
- Quick dry.





Black (90), Charcoal Grey (07), Denim Blue (79), Navy (89)

Unisex Wave Signature Cap

288203 One size

Signature Cap.

- Content: 100% cotton.
- Snap-back closure.
- Wave logo embroidery at front.
- Sea-Doo embroidery on the side.



Black (90), Navy (89)

Unisex Sea-Doo Palm Mesh Cap

288213 One size

Unisex mesh cap.

- Main content: 100% cotton
- 100% polyester mesh back panels.
- Adjustable.
- Palm artwork at front.
- Sea-Doo logo in silicone print at center front.



Black (90)

Unisex Sea-Doo Sets Us Free Flat Cap

288214 One size

Unisex flat cap.

- Content: 100% polyester.
- UPF 30 sun protection.
- Quick dry.
- Floatable.



Navy (89), White (01)

Unisex Sea-Doo Laser Cut Mesh Cap

288216 One size

Unisex breathable cap with laser cut mesh.

- Content: 100% polyester.
- UPF 30 sun protection.
- Quick dry.
- Palm tree and Sea-Doo logo embroidery at front.



Black (90), Lilac (25)

Women's Sun Protection Visor

288215 One size

Ladies' adjustable sun protection visor.

- Content: 100% polyester.
- Buckle at the back for adjustment.
- Sea-Doo and wave logo in silicone print.



Protective Gear

NEW



Grey (09)

Sea-Doo AquaDry Sneakers

444274 5, 6, 7, 8, 9, 10, 11, 12, 13

Happy feet in and out of the water with the "AquaDry" shoes.

- Closed-cell waterproof material that always stays dry (dries with a wipe).
- Innovative design, made with EVA (ethylene vinyl acetate) giving the AquaDry shoes great cushioning and support properties.
- Non-marking and slip-resistant rubber outsole.
- Durable, water-resistant flat laces.
- These shoes float on water.

UNISEX



Black (90)

Sea-Doo Riding Boots

444260 5, 6, 7, 8, 9, 10, 11, 12, 13

Sea-Doo Boots made for performance riding.

- 50% EVA, 40% mesh, 10% lycra.
- Antimicrobial treatment.
- Lightweight EVA midsoles.
- All-around protective urethane coating.
- Mesh uppers and perforated insoles for fast water evacuation.
- Non-slip and non-marking outsoles.
- These amphibian mid-cut boots will allow you to ride hard while protecting your ankles from impacts against the hull.

UNISEX



Black (90)

Sea-Doo Neoprene Shoes

444261 5, 6, 7, 8, 9, 10, 11, 12, 13

3 mm Neoprene shoes.

- 90% neoprene, 10% nylon.
- Double-glued and blind stitched neoprene construction.
- Flexible rubber toe and heel protection caps.
- Molded outsole with non-slip tread design.
- Anti-slip insole.

FOOTWEAR (MEASURE FOOT LENGTH)

Sea-Doo Riding Boots and Water Shoes

US Men's Size	5	6	7	8	9	10	11	12	13
US Women's Size	6	7	8	9	10	11	12	13	14
EU Sizes	36½	37½	39	40	41½	42½	44	45½	46½
Sizing Code*	24	25	27	28	29	30	31	32	33
Foot Length from Heel to Toe (in.)	9	9.2	9.6	10.0	10.4	10.6	11.0	11.2	11.6
Foot Length from Heel to Toe (cm)	23.0	23.5	24.5	25.5	26.5	27.0	28.0	28.5	29.5

Sea-Doo Neoprene Boots and Neoprene Shoes

US Men's Size	5	6	7	8	9	10	11	12	13
US Women's Size	6	7	8	9	10	11	12	13	14
EU Sizes	36	37-38	39	40-41	42	43-44	45	46-47	48
Sizing Code*	24	25	27	28	29	30	31	32	33
Foot Length from Heel to Toe (in.)	8.8	9.2	9.6	10.0	10.4	10.8	11.2	11.6	12
Foot Length from Heel to Toe (cm)	22.5	23.5	24.5	25.5	26.5	27.5	28.5	29.5	30.5

Sea-Doo Aqua Shoes

US Men's Size	5	6	7	8	9	10	11	12	13
US Women's Size	6	7	8	9	10	11	12	13	14
EU Sizes	36½	37½	39	40	41½	42½	44	45½	46½
Sizing Code*	24	25	27	28	29	30	31	32	33
Foot Length from Heel to Toe (in.)	9.1	9.3	9.6	10.0	10.4	10.6	11.0	11.4	11.6
Foot Length from Heel to Toe (cm)	23.0	23.5	24.5	25.5	26.5	27.0	28.0	28.5	29.5

*Use "Sizing Code" to complete the part number on your order.



Floatable Collection

All our sunglasses. No more panic after you drop them in the water – they'll stay at the top where you can see them!



Blue (80), Gold (11), Red (30), Silver (08)

Sea-Doo Low Tide Polarized Floating Sunnies (UV)

448802 One size

- High-quality polarized colored chrome lenses.
- Floating frame technology.
- UV400 protection.
- Air-injected arms for floatability and light weight.
- Removable and adjustable safety strap system.
- 90% plastic, 10% neoprene.



Red (30), Silver (08)

Sea-Doo Wave Polarized Floating Sunnies (UV)

448717 One size

- Polarized colored chrome lenses.
- Floating frame technology.
- UV400 protection.
- Air-injected arms for floatability and light weight.
- Adjustable safety strap system.
- 90% plastic, 10% neoprene.



Blue (80), Gold (11), Red (30), Silver (08)

Sea-Doo High Tide Polarized Floating Sunnies (UV)

448803 One size

- High-quality polarized colored chrome lenses with overmolded lower frame.
- Floating frame technology.
- UV400 protection.
- Air-injected arms for floatability and light weight.
- Removable and adjustable safety strap system.
- 90% plastic, 10% neoprene.



Green (70), Orange (12), Silver (08)

Sea-Doo Riding Goggles (UV)

448623 One size

- Featuring anti-fog technology with colored chrome lenses.
- Indirect ventilation frame.
- Adjustable strap system.
- Goggles-to-PFD attachment safety cord.
- Optional Riding Goggles RX Insert (448624) (sold separately).
- 90% plastic, 10% neoprene.



Blue (80), Gold (11), Green (70), Indigo Blue (82)

Sea-Doo Sand Polarized Floating Sunnies (UV)

448746 One size

- Polarized colored chrome lenses.
- Floating frame technology.
- UV400 protection.
- Air-injected arms for floatability and light weight.
- Removable and adjustable safety strap system.
- 90% plastic, 10% neoprene.



Blue (80), Pink (36)

Sea-Doo Lagoon Polarized Floating Sunnies (UV)

448747 One size

- Polarized colored chrome lenses.
- Floating frame technology.
- UV400 protection.
- Air-injected arms for floatability and light weight.
- Removable and adjustable safety strap system.
- 90% plastic, 10% neoprene.

Riding Gear

UNISEX



Clear (00)

Riding Goggles RX Insert

448624 One size

- Designed for the Sea-Doo Riding Goggles (448623).
- Go to your optics store and most will be able to fit prescription lenses tailored to your needs.
- 100% plastic.



Black (90)

Sea-Doo Chippy Gloves

446332 XS, S, M, L, XL, 2XL, 3XL

Chippy Gloves perfect for Sea-Doo riding.

- Nylon material.
- Gloves with stretch fabric for ease of movement.
- Double stitching in high stress areas for durability.
- Clarino® Nash palm material with 2 mm padding and rubberized Pro-Grip at palm to ensure a solid hold.
- Stretch neoprene cuffs.
- Pre-shaped fingers.
- Lycra gussets at finger knuckles to maximize ergonomics.
- Wrist puller with silicone print.

UNISEX



Black (90)

Sea-Doo Chippy Shorty Gloves

446333 XS, S, M, L, XL, 2XL, 3XL

Chippy Shorty Gloves perfect for Sea-Doo riding.

- Nylon material.
- Gloves with stretch fabric for ease of movement.
- Double stitching in high stress areas for durability.
- Clarino® Nash palm material with 2 mm padding and rubberized Pro-Grip at palm to ensure a solid hold.
- Stretch neoprene cuffs.
- Lycra gussets at finger knuckles to maximize ergonomics.
- Wrist puller with silicone print.

UNISEX



Black (90)

Neoprene Gloves

286729 XS, S, M, L, XL, 2XL

1.5 mm Neoprene Gloves for cold weather.

- Content: 90% neoprene, 10% nylon.
- UV protection.
- Super stretch material for superior comfort and mobility.
- Anti-slip rubberized print at palms.
- Pre-shaped fingers.

GLOVES (MEASURE PALM WIDTH)

Sizes	XS	S	M	L	XL	2XL	3XL
Sizing Code*	02	04	06	09	12	14	16
Palm (in.)	3	3¼	3½	4	4½	5	5½

*Codes to complete the part number on your order.



Family Fun

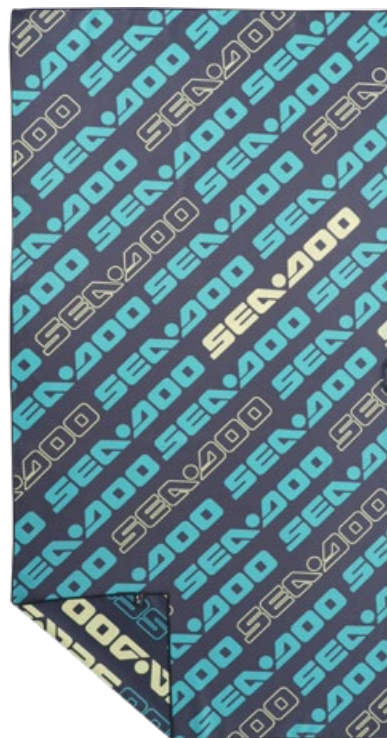
Kid's Sea-Doo
Quick Dry Poncho
by Slowtide
288061_76



Junior Freedom PFD
(US/CA)
287030_90



Youth Live The
Sea-Doo Life T-Shirt
288373_01



Sea-Doo Quick Dry
Towel by Slowtide
288062_26



Youth Palm
Curved Cap
288217_89



Sea-Doo Junior Freedom PFD
(US/CA)
285972_90



Sea-Doo
Kneeboard
51.5 in./131 cm
B107510076

Sea-Doo
Wakeboard
55 in./140 cm
B107520076



Play & Licensing Products

UNISEX



Mixed Color (18)

Pack of 2 Junior Swim Goggles, perfect for their everyday swim

B10795 One size

Paquet de 2 lunettes de natation junior, parfaite pour leur baignade quotidienne.

- UV protection.
- Anti-Fog Treatment.
- Watertight Goggles.
- Silicon Eye Cup and Headband.
- Adjustable Strap.

UNISEX



Blue (80)

Sea-Doo Adult Swim Mask

B10798 One size

Adult Swim Mask, perfect for any underwater adventures.

- UV Protection.
- Anti-Fog Treatment.
- Clear lenses for optimal visibility in pools.
- Watertight PVC Skirt.
- Quick-release PVC Strap for adjustment.

UNISEX



Turquoise (Aqua) (76)

Sea-Doo Adult Swim Mask and Snorkel Combo

B10801 One size

Swim Mask & Snorkel Combo, ideal for beginners and casual snorkelers.

- Mask with clear single lens and anti-fog treatment, watertight PVC skirt, and quick-adjust strap with push-lever buckle.
- Snorkel with dry top, PVC mouthpiece, flexible tube, purge valve, and quick-release clip.

UNISEX



Black (90)

Sea-Doo Adult Swim Goggles

B10796 One size

Adult Swim Goggles, perfect for every swim.

- UV protection.
- Anti-Fog Treatment.
- Watertight goggles.
- Silicon Eye Cup and Headband.
- Adjustable Strap.

UNISEX



Black (90)

Sea-Doo Adult Mask, Snorkel and Fins Set

B10799 One size

Complete Snorkel Set ideal for all levels of underwater explorers. Includes Mask, Snorkel and Fins.

- Mask with clear lenses, anti-fog treatment, watertight silicon skirt, and adjustable strap.
- Snorkel with splash guard, silicone mouthpiece, flexible tube, purge valve, and mask attachment.
- Lightweight Fins with adjustable strap and waterdrain system.

UNISEX



Blue (80)

Sea-Doo Junior Swim Mask and Snorkel Combo

B10802 One size

Swim Mask & Snorkel Combo, ideal for young beginners in snorkeling.

- Mask with clear single lens, UV protection, anti-fog treatment, and watertight PVC skirt.
- Snorkel with splash guard and PVC mouthpiece.

UNISEX



Blue (80)

Sea-Doo Junior Swim Mask

B10797 One size

Junior Swim Mask, perfect for any underwater adventures.

- Clear lenses for optimal visibility in pools.
- Watertight PVC Skirt.
- Quick-release PVC Strap for adjustment

UNISEX



Blue (80)

Sea-Doo Junior Mask, Snorkel and Fins Set

B10800 One size

Junior Snorkel Set ideal for young underwater explorers. Includes Mask, Snorkel and Fins.

- Mask with clear lenses, watertight silicon skirt, and adjustable strap.
- Snorkel with splash guard, silicone mouthpiece, flexible tube, purge valve, and mask attachment.
- Lightweight Fins with adjustable strap and waterdrain system.

UNISEX



Turquoise (Aqua) (76)

Sea-Doo Kneeboard 51.5 in./131 cm

B10751 One size

The Sea-Doo Kneeboard is perfect for teaching kids. It provides unrivaled stability, building confidence and ensuring comfort on the water.

- Unleash your knee surfing skills with our versatile kneeboard, perfect for lake, beach, and river adventures.
- Upgrade to our lightweight kneeboard, weighing under 9 lb for effortless transportation in your vehicle or boat box.
- Stay secure with the adjustable strap on each Sea-Doo kneeboard, ensuring a safe and enjoyable water experience.
- Measuring 50" long and 20" wide, our kneeboard accommodates older children, teens, and adults, making it perfect for sharing.
- Crafted from corrosion-proof marine-grade materials, our kneeboard withstands the elements and suits beginners and pros alike.



Turquoise (Aqua) (76)

Sea-Doo Wakeboard 55 in./140 cm

B10752 One size

Dive into the world of wakeboarding with the Sea-Doo board! It's perfect for beginners and a must-have for any boat adventure. Thanks to its buoyant foam core, you'll experience effortless starts and smooth rides from the get-go. As you progress, enjoy the board's predictability and user-friendly nature.

- Sea-Doo Wakeboard 55 inches.
- Constructed with a high-density PU foam core, providing stability and resilience. The deck and bottom are made of PBT and epoxy fiberglass layers, ensuring strength and durability. Perfect for reliable and long-lasting performance.
- Size: Length 55" x Width 16.9" x Thickness 1".
- This product comes with open-toe bindings, allowing for easy entry and exit while providing a comfortable fit for a variety of foot sizes.
- The dual-zone lacing system, equipped with hex locks, offers a customizable and secure fit.
- The impact EVA footbed provides excellent cushioning, shock absorption and reduced fatigue during long rides.
- US sizes 8-12.

UNISEX



Clear (00)

Sea-Doo Triangle Tube - 1-Per.

B10667 One size

The Sea-Doo One-Person Triangle Tube (122 cm x 127 cm) is versatile for all ages and rider levels. For relaxed fun, ride seated in the middle with your feet dangling over the side. For a more thrilling ride, lay on the tube and hang on—this model is a great option for performing tricks. Also, one-person tubes are perfect for towing behind a three-passenger watercraft. All Sea-Doo tubes are made with heavy-duty nylon covers and robust PVC air chambers, and outfitted with quick-connect tow hooks.

- Sea-Doo One-Person Triangle Tube.
- Designed for one person.
- Sit-in position 24-gauge robust PVC bladder with 420-denier partial heavy-duty nylon cover.
- Double webbing foam handles with knuckle guards to avoid chafing.
- Self-bailing drain vents.
- Reinforced tow system.
- Quick-connect tow hook.
- Padded valve cover.
- Puncture repair kit.
- Boston valve for bladder and normal air valve in floor.
- Diameter: 124 cm x 128 cm when inflated.



UNISEX



Clear (00)

2 Way Sit In Tube - 3-Per. (2021)**B10710** One size

The Sea-Doo Three-Person Two-Way Sit-in Tube has all the same attributes as its two-person counterpart, plus room for one more passenger. A cockpit-style tube ideal for more timid riders who just want a stable, relaxing ride. A chafe-free neoprene seating area that is comfortable and dry, while the tube's low center of gravity makes it less susceptible to wakes and waves tipping it over. Also, thanks to its dual tow points, it offers two different styles of riding: pulled from the front for a comfortable ride while seated against the backrest, or towed backwards for a more thrilling chariot-style ride while sitting on your knees. And whichever way you ride, the soft foam handles equipped with knuckle guards provide a welcome added touch. All Sea-Doo tubes are made with heavy-duty nylon covers and robust PVC air chambers, and outfitted with quick-connect tow hooks.

- Sea-Doo Three-Person Two-Way Sit-in Tube.
- Designed for three riders.
- Multiple sit-in riding positions, sitting with their back against the backrest or on their knees.
- Can be pulled from the front or the rear depending on the choice of your riding position.
- 26-gauge robust PVC bladder with 840/420-denier heavy-duty full nylon cover.
- 4 self-bailing drain vents Includes soft foam area for sitting and foam knuckle-protection pads to avoid chafing.
- Tow system reinforced with 840-denier nylon.
- Quick-connect tow hook.
- Padded valve cover.
- Puncture repair kit.
- 2 Boston valves and one normal air valve in floor.
- Dimensions: 70" x 87" (177 cm x 220 cm) when inflated.

UNISEX



Clear (00)

Deck Tube - 2-Per. (2021)**B10711** One size

The Sea-Doo Two-Person Deck Tube is great for riders seeking a wild, dynamic ride. The flat surface and low profile make it great for riding lying on your belly, face close to the water, to fully experience the speed of the ride. The neoprene passenger area will provide you with chafe-free comfort. And while you're holding on tight, you'll be glad for the grip of the soft foam handles equipped with knuckle guards. All Sea-Doo tubes are made with heavy-duty nylon covers and robust PVC air chambers, and outfitted with quick-connect tow hooks.

- Sea-Doo Two-Person Deck Tube.
- Designed for up to two riders and to ride lying down.
- 26-gauge robust PVC bladder with 420-denier heavy-duty full nylon cover.
- Double webbing soft foam handles with knuckle guards to prevent chafing.
- Comfortable foam pad.
- 1 self-bailing drain vent.
- Reinforced tow system.
- Quick-connect tow hook.
- Padded valve cover.
- Puncture repair kit.
- Boston valve.
- Dimensions: 69" x 72" (175 cm x 182 cm) when inflated.

UNISEX



Clear (00)

Sit on Top Tube - 3-Per. (2021)**B10712** One size

The Sea-Doo Three-Person Sit-on-Top Tube is a roomy towable loaded with features like a comfy backrest, a chafe-free neoprene sitting area, and knuckle-guard-equipped soft foam handles for a truly comfortable ride. Always up for any kind of water adventure, from tranquil rides that free the mind to thrilling experiences you won't soon forget, this versatile tube accommodates three passengers for triple the water fun. All Sea-Doo tubes are made with heavy-duty nylon covers and robust PVC air chambers, and outfitted with quick-connect tow hooks.

- Sea-Doo Three-Person Sit-on-Top Tube.
- Designed for up to three passengers sitting with their back against the backrest.
- 26-gauge robust PVC bladder with 840/420-denier heavy-duty full nylon cover.
- Self-bailing drain vent.
- Includes soft foam area for sitting and foam knuckle-protection pads to avoid chafing.
- 4-point tow system reinforced with 840-denier nylon.
- Quick-connect tow hook.
- Padded valve cover.
- Puncture repair kit.
- 2 Boston valves and one normal air valve in floor.
- Dimensions: 79" x 88" (200 cm x 223 cm) when inflated.



Clear (00)

60 ft Towable Tube Cord 4,100 lb

B10477 One size

This Sea-Doo rope for 2 to 4 passenger towable tubes is designed for exhilaratingly exciting tubing adventures. 18.3 m long to allow the tube to pull cleanly over the wake of your boat. A tensile strength capable of handling loads of up to 1860 kg for pulling up to four people, and also perform turns and swings.

- Sea-Doo Towable Tube Rope for 2- to 4-person tube.
- 18.3 m rope for 2- to 4-passenger towable tube.
- Resists a 1860 kg tensile strength.
- Solution-dyed and sun-resistant polyethylene to protect against UV rays.
- Loops on both ends.
- Conveniently stores in webbing handily equipped with eyelet to hang on wall.



Clear (00)

60 ft Towable Tube Cord 1,500 lb

B10486 One size

This Sea-Doo rope for one-person towable tubes will deliver hours of exhilaratingly exciting tubing adventures. The 18.3 m length allows the tube to pull cleanly over the wake of your boat. And with a tensile strength of 680 kg, it's perfect for handling turns and swings.

- Sea-Doo Towable Tube Rope for 1-Person Tube.
- 18.3 m for 1-passenger tube.
- 680 kg tensile strength.
- Solution-dyed and sun-resistant polyethylene to protect against UV rays.
- Loops on both ends.
- Conveniently stores in webbing handily equipped with eyelet to hang on wall.



Replacements Parts



Yellow (10)

RPM Paddle for Inflatable Paddle Board (Yellow)

B10736 One size

Replacement paddle for Sea-Doo Inflatable Stand-up Paddle Board.

- Paddle for Sea-Doo Inflatable Stand-up Paddle Board.
- Adjustable 3-piece paddle.
- Adjustment markers make it easy to remember your favorite settings.
- Toolless assembly and torquing.



Blue (80)

RPM Paddle for Inflatable Paddle Board (Blue)

B10737 One size

Replacement paddle for Sea-Doo Inflatable Stand-up Paddle Board.

- Paddle for Sea-Doo Inflatable Stand-up Paddle Board.
- Adjustable 3-piece paddle.
- Adjustment markers make it easy to remember your favorite settings.
- Toolless assembly and torquing.



Black (90)

RPM Leash for Inflatable Paddle Board

B10734 One size

Replacement Ankle Leash for Sea-Doo Inflatable Paddle Boards.

- Comfortable neoprene ankle cuff with 'Velcro' closure.
- Easy to use with pull tab.
- Coil cable and stainless-steel swivel.
- Fits Sea-Doo Paddle Boards (B106660000, B104570000, B107240000).



Black (90)

RPM Fin for Inflatable Paddle Board

B10735 One size

Replacement fin for Sea-Doo Inflatable Paddle Boards.

- Replacement fin for Sea-Doo Inflatable Paddle Boards.
- Slide in and lock.
- Locking tool included.
- Fits Sea-Doo Paddle Boards (B106660000, B104570000, B107240000).



Black (90)

RPM Pump for Inflatable Paddle Board

B10738 One size

Replacement manual pump to inflate Sea-Doo Paddle Boards (B106660000, B104570000, B107240000).

- Manual pump to inflate Sea-Doo paddle boards.
- Includes gauge for inflating to specified PSI/BAR.
- Fits Sea-Doo Paddle Boards (B106660000, B104570000, B107240000).



Grey (09)

RPM Backpack with wheels for Inflatable Paddle Board

B10739 One size

Replacement backpack with wheels to carry Sea-Doo Inflatable Paddle Boards (B106660000, B104570000, B107240000).

- Backpack with wheels for ease of transportation and storage of Sea-Doo Inflatable Paddle Boards.
- Can carry deflated board, 3-piece paddle and pump.
- Fits Sea-Doo Paddle Boards (B106660000, B104570000, B107240000).



Grey (09)

RPM Valve & Wrench for Inflatable Paddle Board

B10740 One size

Replacement valve and wrench for Sea-Doo Inflatable Paddle Boards (B106660000, B104570000, B107240000).

- Replacement valve and wrench to correct an inflatable paddle board leaking valve.
- Fits Sea-Doo Paddle Boards (B106660000, B104570000, B107240000).



Black (90)

RPM Boston Valve for Inflatable Paddle Board

B10741 One size

Replacement Boston valve for Sea-Doo Inflatable Paddle Boards (B106660000, B104570000, B107240000).

- Replacement Boston valve to correct an inflatable paddle board leaking valve.
- Fits Sea-Doo Paddle Boards (B106660000, B104570000, B107240000).



Charcoal Grey (07)

Sea-Doo Riding Goggles RPM Strap

448770 One size

- Replacement strap for the Sea-Doo Riding Goggles.
- 80% fabric, 20% plastic.



Black (90)

Wave Sunnies RPM Strap

448775 One size

- Replacement strap for the Sea-Doo Wave sunnies.
- 100% neoprene.



Black (90)

Sand and Lagoon Sunnies RPM Strap

448776 One size

- Replacement strap for the Sea-Doo Sand and Lagoon sunnies.
- 80% neoprene, 20% plastic.



Black (90)

Tide Sunnies RPM Strap

448822 One size

- Replacement strap for the Sea-Doo Tide sunnies.
- 80% neoprene, 20% plastic.

Always use the digital version of the Product Spec Book for the most updated information.



BRP reimagines the way you access your world

Sea-Doo is one of many success stories from BRP, the global company behind some of the most daringly innovative products and experiences that move you. Because it's not about the destination, it's about the journey – yours.

Discover our brands:

ski-doo *LYNX* *SEA-DOO* *can-am* *ROTAX*

www.brp.com



SEA-DOO.COM



MY26 297002670

A BRP BRAND

