

# 2026 PRODUCT CATALOG

Accessories

Parts & Maintenance

Apparel

Play & Licensing Products



# SEA-DOO®

# Product Catalog 2026

## Accessories

Essential Bundles	6
Covers	8
LinQ Cooler Guide	10
LinQ, Storage & Bags	12
Watersport Accessories	19
Step & Ladders	20
Steering Controls	21
Platinum Audio System Kit	22
Audio	23
Touchscreen Garmin GPS	24
Electronics & Electrical	25
Body Accessories	28
Docking & Beaching	30
Riding Essentials	32
Add a Splash of Color	33
Concept Marine Design	34

## Parts & Maintenance

Maintenance Checklist	37
Utility Equipment	38
Body Frame	38
Engine Cooling	38
Drive	39
Maintenance Products	41
Oil Change Kit	43
XPS Products	44
Cleaning & Care Products	46
How to Use Them	48

## Apparel

Sizing Chart	52
Find Your Perfect Fit	54
<b>NEW</b> Wave PFD	56
Sea-Doo Wave Grip PFD	57
Protective Gear	58
Neoprene Guide	64
Riding Gear	66
Sportswear	68
Protective Gear	75
Riding Gear	77
Family Fun	78
Play & Licensing Products	79
Replacements Parts	83

Pricing is subject to change due to various taxes, tariffs or duties which may be applicable on certain products. BRP reserves the right to change the prices without incurring any obligations.

For advertising purposes, some scenes depicted in this catalog include professional riders and operators executing maneuvers under ideal and/or controlled conditions. Do not attempt any of these or any other risky maneuvers if they're beyond your level of riding ability as well as your understanding and respect for the performance of your Sea-Doo watercraft. RIDE SMART FROM THE START. Always ride responsibly and safely. Follow all instructional and safety materials. The warranty is subject to the exclusions, limitations of liabilities and all other terms and conditions of BRP's standard limited warranty. BRP recommends a minimum operator age of 16 years for riding a watercraft. Always wear appropriate protective clothing for your type of boating use, including a Coast Guard approved life jacket. Always remember that riding and alcohol/drugs don't mix. Operate your watercraft keeping a safe distance between yourself and others. Always observe applicable local laws and regulations. Because of its ongoing commitment to product quality and innovation, Bombardier Recreational Products Inc. (BRP) reserves the right, at any time, to discontinue or change specifications, prices, designs, features, models or equipment without incurring any obligations. Some models depicted herein may include optional equipment. Prices are based on Manufacturer Suggested Retail Prices. Dealers may sell for a different price. For Canada and US, taxes are not included. Depending on location, products are distributed by BRP US Inc., Bombardier Recreational Products Inc., BRP European Distribution SA, BRP Australia Pty Ltd., BRP Finland Oy, BRP Japan Ltd., BRP Comm & Trade (Shanghai) Co Ltd. or Bombardier Recreational Products Motores da Amazonia Ltda. ® are registered trademarks and TM and the BRP logo are trademarks of Bombardier Recreational Products Inc. or its affiliates. \* is a trademark of Bombardier Inc. used under license. Velcro is a registered trademark of Velcro Industries. Bluetooth is a registered trademark owned by Bluetooth SIG, Inc. Garmin and ECHOMAP are trademarks of Garmin Ltd. or its subsidiaries. GTX is a registered trademark of Castrol Limited, used under license. YUASA is a registered trademark of YUASA Batteries Inc. NGK is a registered trademark of NGK Spark Plugs, Ltd. Salt-Away is a trademark of Salt-Away Products. Slowtide is a trademark of Slowtide LLC. All other company and/or product names are trademarks of their respective holders. © 2025 BRP Inc. All rights reserved. Printed in Canada.





Accessories



# Accessories

Essential Bundles	6
Covers	8
LinQ Cooler Guide	10
LinQ, Storage & Bags	12
Watersport Accessories	19
Step & Ladders	20
Steering Controls	21
Platinum Audio System Kit	22
Audio	23
Touchscreen Garmin GPS	24
Electronics & Electrical	25
Body Accessories	28
Docking & Beaching	30
Riding Essentials	32
Add a Splash of Color	33
Concept Marine Design	34





# Essential Bundles



## STARTER

SKU	NAME	PAGE	PRICE
295100330	Safety Equipment Kit	p. 76	\$22.49
295100833	Fire Extinguisher	p. 76	\$35.99
295100570	Registration Kit - Black	p. 76	\$41.49
295101014	Cover	p. 52	\$372.49
285998	Airflow PFD	p. 104	N/A
286808	Neoprene Shorts	p. 110	N/A
Total			\$472.46

## ADVANCED

SKU	NAME	PAGE	PRICE
278003401	RF Programmable D.E.S.S.™ Key	p. 70	\$84.99
295100418	Snap-in Fenders	p. 74	\$138.99
295100944	Snap-in Fenders Installation Kit	p. 74	\$32.99
295100750	Folding Anchor	p. 75	\$67.99
295100851	Dock Tie	p. 75	\$46.49
295100901	All-Climate Storage Cover	p. 53	\$285.99
9779310	XPS Wash & Wax	p. 90	\$10.49
9779320	XPS Spray Wax with Polymer	p. 90	\$19.49
288056	Men's Sea-Doo Long Sleeve Rashguard	p. 112	N/A
288219	Unisex Sea-Doo Sets Us Free Straw Hat	p. 117	N/A
Total			\$1,159.88

## PEAK

SKU	NAME	PAGE	PRICE
295100814	Removable Storage Bin Organizer	p. 61	\$77.49
295101257	LinQ 5.3 US gal (20 L) Cooler	p. 56	\$409.99
269502121	Dry Bag 2.6 US gal (10 L)	p. 61	\$40.49
295100862	Lid Organizer	p. 76	\$74.99
Total			\$1,762.84

Note that the price does not include installation requirements and that part numbers may vary depending on vehicle model.

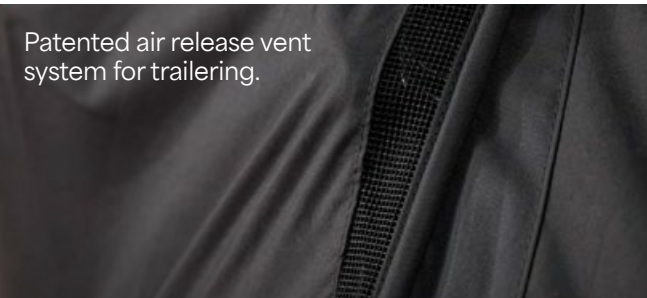




# Covers

## Key Features

- Weather-resistant trailering cover protects your watercraft during storage and trailering.
- Made of heavy-duty UV-resistant solution-dyed polyester canvas.
- Soft inner lining prevents panel abrasion.
- Areas prone to higher wear are reinforced with a layer of double canvas.
- A perfect fit for your watercraft, with or without installed Sea-Doo accessories.
- Standard on GTX Limited models.



MODEL		1	2	3.1	3.2	3.3	4	5	6	7	8	9	COLORS	SKU	PRICE
Explorer Pro	Explorer Pro	•	•	•	•	•	•	•	•	•	•	•	Black	295101032	\$425.99
GTX, RXT models with suspension	GTX S, GTX Limited S (2012-2017)	•	•					•	•	•	•			295100718	\$372.49
	RXT iS, GTX iS, GTX Limited iS (2009-2016)	•	•					•	•	•	•		Black/Light Grey	280000460	\$372.49
	RXT-X aS (2011-2016)	•	•					•	•	•				280000586	\$372.49
GTX, RXT, Wake Pro, FishPro models without suspension	RXT, RXT-X, GTX, Wake Pro (2018 and up)	•	•	•	•	•	•	•	•	•	•	•	Black	295101014	\$372.49
	NEW RXT, RXT-X, GTX, Wake Pro (2018 and up) with Touring Windshield	•	•	•	•	•	•	•	•	•	•	•	Black	295101348	\$425.99
	GTX S, GTX Limited, RXT, RXT-X (2010-2017)	•	•					•	•	•	•		Black/Light Grey	295100719	\$372.49
	Wake Pro (2010-2017)	•	•					•	•	•	•		Black	295100720	\$372.49
	FishPro Sport, FishPro Trophy	•	•	•	•	•	•	•	•	•	•	•	Black	295100925	\$404.49
RXP-X, GTR-X models	RXP-X (2012-2020)	•	•					•	•	•	•			295100721	\$372.49
	GTR-X (2017-2019)	•	•					•	•	•	•		Black/Light Grey	295100721	\$372.49
	RXP-X (2021 and up)	•	•		•	•	•	•	•	•	•	•		295100889	\$372.49
GTS, GTI, GTR, GTR-X, Wake models, FishPro Scout	GTS, GTS Rental, GTI, GTI SE, GTI Limited (2011-2019)	•	•					•	•	•	•		Black/Light Grey	295100722	\$361.99
	GTR (2012-2019)	•	•					•	•	•	•		Black/Light Grey	295100723	\$361.99
	Wake (2011-2019)	•	•					•	•	•	•		Black	295100724	\$361.99
	GTI, GTI SE, GTR, GTR-X, Wake 170 (2020 and up)/FishPro Scout	•	•		•	•	•	•	•	•	•	•	Black	295100928	\$361.99
Spark models	Spark for 2 (2014-2023)	•	•	•		•	•	•	•	•	•	•		295100912	\$340.99
	Spark for 3 (2014-2023)	•	•	•		•	•	•	•	•	•	•		295100789	\$361.99
	Spark for 1 and for 2 (2024 and up)	•	•	•		•	•	•	•	•	•	•	Black	295101160	\$340.99
	Spark for 3 (2024 and up)	•	•	•		•	•	•	•	•	•	•		295101161	\$361.99

Note: For prior model years, ask your dealer for details.





295101032



295101348



295101014



295101229



295100889



295100928



295101161



295101160



### All-Climate Storage Cover

GTX, RXT-X, Wake Pro (2019 and up) / GTI, GTR, GTR-X, Wake (2020 and up) / RXP-X (2021 and up) / All FishPro models (2019 and up, except FishPro Apex)

**295100901 \$285.99**

Spark for 1, Spark for 2, Spark for 3

**295100905 \$264.99**

- Protects watercraft surfaces from elements, dust, dirt, sun fading and more during storage.
- 100% waterproof plastic extrusion construction.
- Fused seams prevent leaking during rain or snow.
- Air vents allow circulation and prevent moisture build-up.
- Soft inner lining protects watercraft from abrasion.
- Specifically designed for the perfect fit for easy installation and removal.
- Ideal replacement for shrink wrap storage for an eco-friendly solution.
- \*Not for use during trailering.





# LinQ Cooler Guide

## Add some thrills with LinQ

Having fun on the water has never been easier with LinQ. Take everything you need with you to spend a perfect day on the water with a wide range of Sea-Doo LinQ accessories. Find the storage box, bag, rack or cooler to fit your needs and make your watercraft unstoppable!







LITQ

ROTAX POWER

LIMITED

SEA-DOO



# LinQ, Storage & Bags



## LinQ 5.3 US gal (20 L) Semi-Rigid Cooler

Models with LinQ Base Kit  
**295101252 \$265.99**

- 5.3 US gal (20 L) of insulated, water-resistant capacity.
- Quick, easy and secure LinQ system installation.
- Attaches with one set of LinQ Fasteners.
- Single day use soft cooler.
- Mesh pocket on top of the lid.
- Zippered pocket under the lid for quick and easy access.
- Removable interior for easy cleaning.
- Carry handles for easy transport to and from the water.
- Can contain twelve 355 ml cans.
- Dimensions: 19" L x 13" W x 10" H (48 cm L x 33 cm W x 25 cm H).

**NEW**



## LinQ 5.3 US gal (20 L) Cooler

Models with LinQ Base Kit  
**295101257 \$409.99**

- LinQ-mounted for fast, easy and secure storage.
- Locks in place with just a quarter turn.
- High-quality insulation for optimal ice retention.
- Keeps ice cold for 5 days.
- Rotomolded construction for exceptional rigidity and durability.
- Sealed lid for airtight, weather-tight closure.
- Rigid handles make transportation easy.
- Horizontal locking handles allow for installation of LinQ Lite accessories.
- Marinized hardware suited for saltwater applications.
- Holds thirty-four 355 ml cans.
- 5.3 US gal (20 L) capacity.
- Exterior dimensions: 21" L x 15" W x 14" H (52 cm L x 38 cm W x 35 cm H)
- Interior dimensions: 15" L x 10" W x 9" H (39 cm L x 26 cm W x 23 cm H).

*Note: Cannot be mounted on the LinQ Stackable Fuel Caddy.*



## LinQ 8.5 US gal (32 L) Insulated Tote Bag

Models with LinQ Base Kit  
**295101247 \$212.99**

- 8.5 US gal (32 L) of thermal insulated, soft-sided storage.
- Quick, easy and secure LinQ system installation.
- Single day use soft cooler.
- Water-resistant construction.
- Robust outer material for durability with a modern look.
- Carry handles and removable shoulder strap for easy transport to and from the water.
- Featuring inside pockets, zipped pockets and adjustable carry straps on each side to store a towel.
- Collapsible if not fully packed with straps on both sides.
- Can contain eighteen 355 ml cans.
- Dimensions: 15.5" L x 8" W x 18.5" H (39 cm L x 20 cm W x 47 cm H).



## LinQ 11.4 US gal (43 L) Cooler

RXT, RXT-X, GTX and Wake Pro (2018 and up) / GTI, GTI SE, GTR, GTR-X and Wake 170 (2020 and up) / RXP-X (2021 and up) / All FishPro models (2019 and up) / Explorer Pro  
**715009276 \$638.99**

- Versatile LinQ 16" configuration fits many vehicles for fast, easy, secure storage.
- High-quality impact-resistant outer shell for exceptional durability.
- High-quality insulation for optimal ice retention up to 6 days
- 11.4 US gal (43L) capacity or sixty 355 ml cans.
- Rigid horizontal locking handles allows installation of LinQ Lite accessories.
- Dry basket included to protect items.
- New ergonomic and secure latch system offers excellent sealing.
- Inside the Sea-Doo Switch the cooler can be installed length or width wise to fit your needs.



## LinQ 4.2 US gal (16 L) Cooler

Models with LinQ Base Kit  
**295100698 \$379.99**

- Secure, easily installed LinQ-mounted cooler.
- Premium foam insulation holds ice up to five days.
- Durable rotomolded rigid construction.
- Sealed lid for airtight, weather-tight closure.
- Heavy-duty T-handle latches resistant to marine environments.
- Marinized hardware suited for saltwater applications.
- Can contain twenty 355 ml cans.
- 4.2 US gal (16 L) capacity.
- Exterior dimensions: 13" L x 20" W x 10" H (33 cm L x 51 cm W x 25.5 cm H).
- Interior dimensions: 9" L x 17" W x 7" H (23 cm L x 43 cm W x 18 cm H).

*Note: Cannot be mounted on the LinQ Stackable Fuel Caddy.*



## LinQ 13.5 US gal (51 L) Cooler (Double Latch)

RXT, RXT-X, GTX, GTX Limited, Wake Pro (2018 and up) / RXP-X (2021 and up) / GTI, GTI SE, GTR, GTR-X, Wake (2020 and up) / Explorer Pro  
**269801151 \$809.99**

- 13.5 US gal (51 L) of insulated, water-resistant capacity, to carry up to 72 cans.
- Exceptionally rigid and highly durable with Premium-quality foam insulation for optimal ice retention up to 3 days.
- Heavy-duty external storage pocket adds extra room.
- Top features workspace with anti-slip surface for baiting hooks, and fish ruler molded into the top.
- T-handle heavy-duty latches are durable and resistant to seal the cover.
- Slots for rod or cup holders on each side.
- Angled trolling slots for the perfect multi-rod trolling.
- Exterior dimensions: 19" L x 31 1/2" W x 16 1/2" H (48 cm L x 80 cm W x 42 cm H).

*LinQ 13.5 US gal (51 L) Cooler Extension (295101033) can be added on top for more storage. LinQ Rod Holders (295100795) are sold separately.*





### LinQ 13.5 US gal (51 L) Cooler Extension (Double Latch)

Fits LinQ 13.5 US gal (51 L) Cooler (Double Latch) (269801151)

**295101033 \$299.99**

- Add 5.3 US gal (20 L) of extra storage to your existing 13.5 US gal (51 L) cooler.
- Fully insulated and easy-to-install.
- Ideal for separating your lunch from your catch or a separate tackle box.
- Can contain thirty-six 355 ml cans. Keeps ice cold for three days.
- Exterior dimensions: 19" L x 31½" W x 6½" H (48 cm L x 80 cm W x 16.5 cm H).
- Interior dimensions: 11½" L x 26" W x 5" H (29 cm L x 66 cm W x 13 cm H).

*Requires LinQ 13.5 US gal (51 L) Cooler (Double Latch) (269801151) for installation.*



### LinQ Cup Holder

Fits LinQ Front Supports and LinQ 13.5 US gal (51 L) Cooler

**295101230 \$40.49**

- Cup holder fits most beverage containers thanks to flexible fins that adjust to size of beverage.
- Can be installed on the 13.5 US gal (51 L) cooler or on the Cup and Rod Holder front supports.
- Toolless installation.
- Sold single.



### LinQ Rod Holder

Fits LinQ Front Supports and LinQ 13.5 US gal (51 L) Coolers

**295100795 \$42.49**

- Perfect to safely transport your fishing rods to your favorite fishing spots or for trolling.
- Features quick-attachment system with release lever for easy installation onto / removal from any of the 30 different positions on the LinQ 13.5 gal (51 L) Cooler or in front of some vehicles using the LinQ Front Supports.
- Firmly holds fishing rod using a molded rubber cap specifically designed to quickly secure or remove the fishing rod using the reel arm.



### LinQ Front Support

RXT, RXT-X, GTX, Wake Pro (2018 and up), FishPro (2019-2021), Explorer Pro, FishPro Sport, FishPro Trophy

**295100948 Left side \$31.99**

RXT, RXT-X, GTX, Wake Pro (2018 and up), FishPro (2019-2021), Explorer Pro, FishPro Sport, FishPro Trophy

**295100949 Right side \$31.99**

- Enables the installation of front-mounted LinQ Rod Holder (295100795) or LinQ Cup Holder (295101230) (sold separately).
- Allows for easy access to beverages or rod during trolling without impeding the driver.



### LinQ Lite Cup Holder

Spark (2024 and up)

**715009406 \$40.49**

- Keep your beverage within reach no matter where you're sitting on your Switch.
- Flexible fins adjust to various beverage container sizes to hold most securely.
- No permanent installation point means you're free to move it almost anywhere.
- Toolless placement, easy to move from place to place.
- Can be installed in the designated mounting points on the Adjustable Table, on the vehicle railing and on the Seat Corner Backrest.



### LinQ Front Support

GTI, GTI SE, GTR, GTR-X, Wake (2020 and up), FishPro Scout

**295101039 Left side \$31.99**

GTI, GTI SE, GTR, GTR-X, Wake (2020 and up), FishPro Scout

**295101040 Right side \$31.99**

- Enables the installation of front-mounted LinQ Rod Holder (295100795) or LinQ Cup Holder (295101230) (sold separately).
- Allows for easy access to beverages or rod during trolling without impeding the driver.



LinQ Lite Action Camera Holder

Spark (2024 and up)  
**295101139** **\$51.99**

- LinQ lite attachment system for cameras.
- Provides great vantage points to capture photos and videos.
- Offers 360-angle positioning for perfect filming and taking photos.
- Designed to hold devices securely.
- Fast, easy attachment and removal.



LinQ 2.6 US gal (10 L) Modular Cargo Box

Models with LinQ Base Kit  
**715005494** **\$148.99**

- 2.6 US gal (10 L) of hard-sided modular cargo capacity.
- Heavy-duty construction with weather-resistant sealed lid.
- Stackable with an additional LinQ Modular Box (715005494, 715007112) or LinQ Roll-Top Bag (715008110) for expanded storage.
- Capable of mounting in multiple LinQ attachment location for added convenience.
- Dimensions: 19" L x 12 ½" W x 5" H (48 cm L x 32 cm W x 13 cm H).

*Requires LinQ Base Installation Kit (295101009) to stack boxes or bag*



Thermal Insert for LinQ 2.6 US gal (10 L) Modular Cargo Box

**219401110** **\$63.99**

- Insulated liner.
- Fits very well in the LinQ 2.6 US gal (10 L) Modular Cargo Box.
- Can contain five 473 ml cans or six 355 ml cans.
- Keeps ice cold for one day.
- Interior dimensions: 17" L x 9" W x 2 ½" H (43 cm L x 23 cm W x 7 cm H).



LinQ 5 US gal (20 L) Modular Cargo Box

Models with LinQ Base Kit  
**715007112** **\$170.49**

- 5.2 US gal (20 L) of hard-sided modular storage capacity.
- Dimensions: 19" L x 12 ½" W x 9" H (49.5 cm L x 32.3 cm W x 23.5 cm H).
- Heavy-duty construction with weather-resistant sealed lid.
- Additional LinQ Modular Box (715005494) can be stacked on top for the ideal storage solution.

*Requires LinQ Base Installation Kit (295101009) to stack boxes or bag.*



LinQ 7.8 US gal (30 L) Modular Cargo Box

Models with LinQ Base Kit  
**715006830** **\$191.49**

- 7.8 US gal (30 L) of hard-sided modular storage capacity.
- Dimensions: 19" L x 12 ½" W x 14" H (49.5 cm L x 32.3 cm W x 35 cm H).
- Heavy-duty construction with weather-resistant sealed lid.



LinQ Base Installation Kit

Fits LinQ 3.8 gal (14.5 L) Stackable Fuel Caddy  
**295101009** **\$43.49**

- LinQ Base Kit allows select Sea-Doo LinQ accessories to be stacked on top of the LinQ 3.8 US gal (14.5 L) Stackable Fuel Caddy (295100950).
- Includes 2 LinQ bases and maritized hardware for quick install.





### LinQ 3.8 US gal (14.5 L) Stackable Fuel Caddy

Models with LinQ Base Kit

**295100950 \$276.99**

- Quickly and easy, secure installation with the LinQ accessory system.
- No-spill spout designed for easy pouring.
- 3.8 US gal (14.5 L) capacity.
- Allows for added storage by stacking LinQ 10.6 US gal (40 L) Roll-Top Bag (715008110).
- Marinized for saltwater use.
- Dimensions: 13" L x 19" W x 9" H (33 cm L x 48 cm W x 23 cm H).
- Note: Fuel caddies cannot be stacked.

*Requires LinQ Base Installation Kit (295101009).*



### LinQ 5 US gal (20 L) Fuel Caddy

Models with LinQ Base Kit

**715007822 \$212.99**

- Quick, easy and secure LinQ system installation.
- Spill-free spout for easy use.
- 5 US gal (20 L) capacity.
- Meets new Flame Mitigation Device (FMD) standard.
- Dimensions: 12" L x 19" W x 12" H (30.5 cm L x 48 cm W x 30.5 cm H).



### LinQ 5 US gal (20 L) Seat Bag

GTI, GTI SE, GTX, GTX Limited, Explorer Pro, GTR, GTR-X, RXT-X, RXP-X, Wake, Wake Pro, FishPro Apex, FishPro Scout, FishPro Sport, FishPro Trophy

**295101073 \$244.99**

- 5 US gal (20 L) of UV-resistant storage.
- Perfect to store fenders, ropes or second passenger items.
- Smartly secures behind the passenger seat to maximize rear deck space.
- Installs in seconds with toolless LinQ accessory system.
- Two-pocket primary organization compartments with three zippered openings.
- External side pocket for fast access to small necessities.
- Not compatible with LinQ Multi Cargo Rack.



### LinQ 10.6 US gal (40 L) Roll-Top Bag

Models with LinQ Base Kit

**715008110 \$244.99**

- LinQ Roll-Top Bag offers 10.6 gal (40 L) of fully waterproof adjustable storage for your essentials.
- Its roll-top design secures your gear snugly, while a heavy-duty rigid plastic base and foam-lined bottom offer additional protection for the long haul.
- An integrated handle allows for easy transportation on or off the vehicle.
- Equipped with Marinized LinQ Hardware Kit.
- Dimensions: 14" L x 19" W x adjustable H (35.5 cm L x 48 cm W x adjustable H).

## NEW



## LinQ 7.9 US gal (30 L) Dry Bag

Models with LinQ Base Kit

**295101364 \$240.74**

- 7.9 US gal (30 L) storage capacity.
- Installs in seconds with toolless LinQ accessory system.
- Ideal for keeping essentials secure and dry on your adventures.
- Features a watertight zipper (Tizip®).
- Includes a shoulder strap for added convenience.
- Dimensions: 13" L x 14" W x 10" H (32 cm L x 37 cm W x 25 cm H).

## NEW



## LinQ 13.2 US gal (50 L) Dry Bag

Models with LinQ Base Kit

**295101365 \$320.99**

- 13.2 US gal (50 L) storage capacity.
- Installs in seconds with toolless LinQ accessory system.
- Ideal for keeping essentials secure and dry on your adventures.
- Features a watertight zipper (Tizip®).
- Includes a shoulder strap for added convenience.
- Dimensions: 22" L x 14" W x 10" H (56 cm L x 37 cm W x 25 cm H).



## LinQ 26 US gal (100 L) Explorer Bag

Vehicle equipped with LinQ Multi Cargo Rack

**295101016 \$478.99**

- 26 gal (100 L) of watertight storage.
- Installs in seconds with toolless LinQ accessory system.
- Dedicated essentials compartment for registration, license, insurance and more.
- Exclusive D.E.S.S. key storage.
- External quick-access pocket for small items like keys and wallets.
- Turns into a backpack when you get off your machine.
- Collapsible if not fully packed with straps on both sides.
- Dimensions : 26" L x 18" W x 14" H (65 cm L x 45 cm W x 35 cm H).

*Requires LinQ Multi Cargo Rack for installation.*

## Rear Deck Extension with LinQ

GTX, GTX Limited, RXT-X, Wake Pro

**295101026 \$534.99**

- Extend the fun an extra 11.5 inches (≈30 cm) off the stern and add extra storage options.
- Includes six retractable LinQ attachment points maximize cargo capacity and stow out of the way when not in use.
- Three possible configurations: middle, left and right.
- Adds easier access to the water for swimming and watersports or more space for boarding, lounging, fishing and more.
- Compatible with the Ladder.



## LinQ Multi Cargo Rack

GTX, RXT-X, Wake Pro (2018 and up) / GTI, GTI SE, GTR, GTR-X, Wake (2020 and up) / RXP-X (2021 and up) / FishPro Scout, FishPro Sport

**295101015 \$393.99**

- Adds up to three times the available LinQ accessory emplacement to your watercraft.
- Enables multiple LinQ accessory configurations.
- Provides a larger lounging area or casting platform and easier reboarding.
- Uses equipped LinQ attachment system for quick, easy installation.
- Two LinQ Base Installation Kits included.
- Additional Base Installation Kits sold separately (295101034).
- Standard on Explorer Pro model.

*Not compatible with LinQ 13.5 US gal (51 L) Cooler (Double Latch).**Must be installed by authorized BRP dealers.*

## LinQ Base Installation Kit

Fits LinQ Multi Cargo Rack

**295101034 \$42.49**

- LinQ Base Kit allows use of up to three Sea-Doo LinQ accessories simultaneously on the LinQ Multi Cargo Rack.
- Includes 2 LinQ bases and maritized hardware for quick install.



**NEW**

### Set of 3 Watertight Roll-Top Bags

**295101448** **\$80.24**

- 1.3, 2.6 and 5.3 US gal (5, 10 and 20 L) storage capacity.
- Set of three water-resistant bags.
- Roll-top design.
- Easy to fold and store.
- Perfect solution to organize your storage or bags.



### Dry Bag 2.6 US gal (10 L) \*

**269502121** **\$40.49**

- Watertight bag.
- Puncture-resistant PVC-coated polyester fiber material.
- Reinforced bottom.



### Dry Bag 6.6 US gal (25 L) \*

**269001936** **\$64.99**

- Watertight bag.
- Puncture-resistant PVC-coated polyester fiber material.
- Reinforced bottom.
- Includes a shoulder strap.
- 420-denier resistant polyester with TPU coating.



### Spark Front Storage Bin

Spark (2024 and up)  
**295101148** **\$212.99**

- Splash proof design integrates perfectly on Spark models.
- 11.1 US gal (42 L) of storage.
- Provides a LinQ Lite anchor on each side for LinQ Lite Cup Holders.
- LinQ Lite Anchors not compatible with LinQ Lite Action Camera Holder or LinQ Lite fenders.
- 3-piece design installs easily.



### Removable Storage Bin Organizer

RXT, RXT-X, GTX, Wake Pro (2018 and up) / FishPro (2019-2021), Explorer Pro, FishPro Apex, FishPro Sport, FishPro Trophy  
**295100732** **\$77.49**

- Breathable front bin organizer made from high-quality premium-coated synthetic mesh.
- Perfect for storing wet clothes away from the rest of your gear or to transport gear to/from the watercraft.
- Carrying handle and easy storage on or off the watercraft.
- Quick-attach fasteners to secure the bag in place inside the storage bin.

*Designed to be installed with the Storage Bin Organizer (295100835) for a complete set-up.*



### Removable Storage Bin Organizer

GTI, GTI SE, GTR, GTR-X and Wake 170 (2020 and up) / RXP-X (2021 and up) / FishPro Scout  
**295100814** **\$77.49**

- Breathable front bin organizer made from high-quality premium-coated synthetic mesh.
- Perfect for storing wet clothes away from the rest of your gear or to transport gear to/from the watercraft.
- Carrying handle and easy storage on or off the watercraft.
- Quick-attach fasteners to secure the bag in place inside the storage bin.



### Storage Bin Organizer

RXT, RXT-X, GTX, Wake Pro (2018 and up) / FishPro (2019-2021), Explorer Pro, FishPro Apex, FishPro Sport, FishPro Trophy

**295100835**

**\$50.99**

- Leave-in breathable premium-coated synthetic mesh organizer.
- Perfect for safely storing and organizing smaller valuables.
- Designed to be installed in conjunction with the Removable Storage Bin Organizer for a complete set-up (295100732).
- Standard on GTX Limited models (2018 and up).



### Lid Organizer

GTI, GTI SE, GTR, GTR-X and Wake 170 (2020 and up) / RXP-X (2021 and up) / FishPro Scout

**295100862**

**\$74.99**

- Practically positioned in an easily accessible location in front compartment.
- Keep your small items dry in splash-proof inner pocket.
- External mesh pocket allows you to store more items while keeping them in view.
- 1.6 US gal (6 L) volume.







## Watersport Accessories

**NEW**



### LinQ Rear Floating Mat Holder

Models with LinQ Base Kit

**295101366**

**\$133.11**

- Quickly attach and secure a floating mat to the rear deck of your watercraft.
- Installs in seconds with toolless LinQ accessory system.
- Suitable for rolled floating mats up to 28" (71 cm) in diameter.
- Can be paired with another holder for a larger floating mat (Switch models only).
- Holds up to 30 lb (14 kg) in single or dual mode.



### Spark Spotter Handle & Camera Mount

Spark for 3 (2024 and up)

**295101145**

**\$213.99**

- Provides a comfortable and solid grip for the spotter.
- Quick connect installs in a matter of seconds.
- Can be stowed in the front storage area.
- Integrated LinQ Lite Action Camera Holder (295101139).



### LinQ Lite Action Camera Holder

Spark (2024 and up)

**295101139**

**\$51.99**

- LinQ lite attachment system for cameras.
- Provides great vantage points to capture photos and videos.
- Offers 360-angle positioning for perfect filming and taking photos.
- Designed to hold devices securely.
- Fast, easy attachment and removal.



### Tow Point Cleat Adaptor

GTI (2020 and up), GTI SE (2020 and up), GTR (2020 and up), GTR-X (2024), RXP-X (2021 and up), RXP-X APEX, FishPro Scout (2022 and up), Wake (2020 and up), Spark

**295101217 \$27.49**

- Converts the standard rear eyelet into a hybrid cleat.
- Allows quick and easy attachment of looped ropes.



### LinQ Retractable Ski Pylon

RXT, RXT-X, GTX, GTX Limited (2018 and up) / GTI, GTI SE, GTR (2020 and up) / All FishPro models (2019 and up), Explorer Pro, Wake (2020 and up), Wake Pro (2018 and up).

**295100909 \$402.99**

- High-rise pylon keeps rope out of water for better watersport fun.
- Features built-in spotter grab handles and retracts out of the way when not in use.

*Not compatible with LinQ Cargo Rack (295101015) and LinQ 5 US gal (20 L) Fuel Caddy (715007822).  
Note: Never use the Ski Pylon to tow an inflatable or similar toy. Always use the rear cleat.*



### Wakeboard Rack

RXT, RXT-X, GTX, GTX Limited, Wake Pro (2018 and up) / GTI, GTI SE, GTR, GTR-X, Wake (2020 and up) / FishPro Scout

**295100838 \$254.49**

- Easy, safe onboard storage for your wakeboard.
- Convenient quick-release button for fast access.
- EVA foam cushion protects board edge while underway.
- Bungee cord with rubber pads holds board in place while preventing wear on the cord.
- Accommodates most sizes and styles of wakeboards and wakeskates.
- Sold individually, each rack holds one wakeboard.
- Standard on WAKE and WAKE PRO models.

## Step & Ladders



### Shock Tube

**295100662 \$25.99**

- Protects passengers from ski rope kick-back and keeps it away from impellers.
- Durable nylon covered closed-cell foam.



### Boarding Step

Spark  
**295100642 \$126.99**

- Convenient step with knee-friendly surface.
- Installs easily on the right side of a SPARK and can hold up to 250 lb (113 kg).
- Easily mounts on the transom and can be installed by any authorized Sea-Doo dealer in minutes.



### Boarding Ladder

RXT, RXT-X, GTX and Wake Pro (2018 and up) / GTI, GTI SE, GTR, GTR-X and Wake 170 (2020 and up) / RXP-X (2021 and up) / All FishPro models (2019 and up)

**295100869 \$264.99**

- Retractable boarding step designed for your watercraft.
- Makes boarding from the water much easier.
- Spring-loaded platform that stays in the "up" position.
- Direct bolt-on installation, thanks to integrated mounting points on the watercraft.



# Steering Controls



## Handlebar with Adjustable Riser

Spark  
**295101204** **\$374.49**

- The one-of-a-kind handlebar with adjustable riser gives you more leverage to easily maneuver the SPARK and customize your experience to your personal riding style.
- Quickly adjust steering to a variety of heights: use the lower position for cruising/sitdown riding, or extend to maximum height in seconds for stand-up riding.
- Adjustable length of 1.6" to 4" (42.5 mm to 103.5 mm).
- Just flip the lever to make the adjustment, no tool required.

Requires part numbers for installation:  
SPARK without iBR\*  
2016 and prior: 278003491, 295100702  
2017 and up: 278003491  
SPARK with iBR  
2016 and prior: 278003490, 295100702  
2017: 278003490  
2018 and up: 278003823  
2024 and up : 278004180 on base and convenience package  
\*Intelligent Brake and Reverse (iBR).



## Extended Range Variable Trim System (VTS)

Spark (2024 and up)  
**295101260** **\$274.99**

- This Sea-Doo exclusive accessory lets you exaggerate how high you can raise the nose or how deep you can bury it in the water.
- The extended range VTS doubles the range of adjustment compared to our current standard VTS.
- Adjustments are instantaneous thanks to the quick activation switch mounted on the handlebar to allow fine tuning of the watercraft trim angle while riding.
- Simple plug-in connection
- Includes switch, cap and hardware necessary for installation.

We highly recommend purchasing the Step Wedges (295101263) for installation.  
A software update will be required on Spark 2024 models to use the VTS.



## Adjustable Riser\*

RXP-X (2021-2023), GTR-X (2024 and up)  
**295101203** **\$211.99**

- Replaces stock fixed extrusion to allow vertical adjustment length of + $\frac{1}{4}$ " to 3  $\frac{1}{4}$ " (+16 mm to 92 mm) from stock.
- Ergonomically better in stand-up riding position.
- Includes all hardware required for installation.
- Not compatible with vehicle equipped with steering damper.



## Heated Grips

RXT, RXT-X, GTX, GTX Limited, Wake Pro (2018 and up) / RXP-X (2021 and up) / GTI, GTI SE, GTR, GTR-X, Wake (2020 and up) / All FishPro models (2019 and up), Explorer Pro. Heated grip harness required to install on other vehicles  
**295100812** **\$255.49**

- Heated grips with integrated button on the left grip.
- Five levels of heat.
- Slip on to replace existing grips.
- Sea-Doo's renowned integrated palm rest design.
- Use with Wind Deflectors for Handlebar (295100762) for maximum performance.

Needs harness (278003684) if installed with more than two electrical accessories.  
Heated Grips Harness Extension (278004347) is needed for installation on Explorer Pro models.  
Sold in pairs.



## Step Wedges

Spark (2024 and up)  
**295101263** **\$128.49**

- Provide more stability and confidence in different tail stand riding positions.
- Rear footrest with a 45-degree slope to enable you to stand upright on your watercraft when performing tail stands and ultimately expand your range of possibilities by making it easier to pull off even more tricks.



## Heated Grips Harness

Needed for installation on some vehicles: GTX, RXT, Wake Pro (2011-2017) / GTI, GTI SE, GTR, Wake (2011-2019) / GTR-X (2018-2019) / RXP-X (2018-2020) / Spark (2014-2023)  
**295100906** **\$79.49**

- Needed for installation on some vehicles.
- Required for GTX, RXT, WAKE PRO (2011-2017), GTI, GTI SE, GTR, WAKE (2011-2019), GTR-X (2018-2019), RXP-X (2018-2020) and SPARK

NEW

# Platinum Audio System Kit

BRP'S **MOST POWERFUL** AUDIO SYSTEM FOR PERSONAL WATERCRAFT.



## FEATURES

- Two 80-watt speakers for music clarity, even while riding.
- Unique and stylish design makes the speakers stand out.
- An amplifier with two 80-watt channels delivers a loud music experience.
- Advanced Digital Sound Processing (DSP) optimizes sound quality.
- Fully integrated Audio System with Bluetooth connectivity.
- Remote control pad on left speaker for quick and easy song and volume changes.
- Fully submersible.
- Music will play even after engine is turned off.
- Needs harness (278003684) if installed with more than two electrical accessories.



# Audio

NEW



## 80 W Platinum Audio System Kit

RXT, RXT-X, GTX, Wake Pro (2018 and up) / FishPro (2019-2021), Explorer Pro, FishPro Sport, FishPro Trophy

**295101458**

**\$1,444.49**

- The Platinum Audio System Kit is BRP's most powerful audio system for personal watercraft.
- Two 80-watt speakers for music clarity, even while riding.
- Unique and stylish design makes the speakers stand out.
- An amplifier with two 80-watt channels delivers a loud music experience.
- Advanced Digital Signal Processing (DSP) optimizes sound quality.
- Fully integrated Audio System with Bluetooth connectivity.
- Remote control pad on left speaker for quick and easy song and volume changes.
- Fully submersible.
- Music will play even after engine is turned off.

*Needs harness (278003684) if installed with more than two electrical accessories.*



## BRP Audio - Portable System

Spark (2024 and up)

**295101147**

**\$967.49**

- Portable design that integrates perfectly on Spark.
- Powered with a rechargeable lithium battery that offers up to 24 hours of autonomy.
- Mounting point is standard on the vehicle. Front mounted and positioned toward driver for maximum sound clarity.
- 50 watts of power.
- Bluetooth connectivity.
- Control pad on the speaker for volume and song adjustment.
- Ride mode enhances sound experience when in motion.
- Interconnects with other BRP Audio Systems for concert-like sound.
- Can be controlled by a cell phone.
- Floats on water.

NEW



## 80 W Platinum Audio System Kit

GTI, GTI SE, GTR, GTR-X and Wake 170 (2020 and up) / RXP-X (2021 and up) / FishPro Scout

**295101459**

**\$1,444.49**

- The Platinum Audio System Kit is BRP's most powerful audio system for personal watercraft.
- Two 80-watt speakers for music clarity, even while riding.
- Unique and stylish design makes the speakers stand out.
- An amplifier with two 80-watt channels delivers a loud music experience.
- Advanced Digital Signal Processing (DSP) optimizes sound quality.
- Fully integrated Audio System with Bluetooth connectivity.
- Remote control pad on left speaker for quick and easy song and volume changes.
- Fully submersible.
- Music will play even after engine is turned off.

*Needs harness (278003684) if installed with more than two electrical accessories.*



## BRP Audio - Premium System

RXT, RXT-X, GTX, Wake Pro (2018 and up) / FishPro (2019-2021), Explorer Pro, FishPro Sport, FishPro Trophy

**295100711\***

**\$1,309.99**

- Fully integrated Audio System with Bluetooth connectivity.
- Fully submersible.
- Two powerful 50-watt speakers for music clarity, even while riding.
- Remote control pad on left speaker to quickly and easily change songs and volume.
- Music will play even after engine is turned off.

*Needs harness (278003684) if installed with more than two electrical accessories.*

NEW



## 80 W Platinum Audio System Upgrade

**295101512**

**\$802.49**

- The Platinum Audio System Kit is BRP's most powerful audio system for personal watercraft.
- Two 80-watt speakers for music clarity, even while riding.
- Unique and stylish design makes the speakers stand out.
- An amplifier with two 80-watt channels delivers a loud music experience.
- Advanced Digital Signal Processing (DSP) optimizes sound quality.
- Fully integrated Audio System with Bluetooth connectivity.
- Remote control pad on left speaker for quick and easy song and volume changes.
- Fully submersible.
- Music will play even after engine is turned off.

*Needs harness (278003684) if installed with more than two electrical accessories.*



## BRP Audio - Premium System

GTI, GTI SE, GTR, GTR-X and Wake 170 (2020 and up) / RXP-X (2021 and up) / FishPro Scout

**295100839\***

**\$1,309.99**

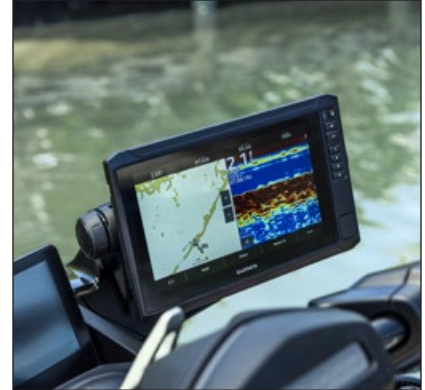
- Fully integrated Audio System with Bluetooth connectivity.
- Fully submersible.
- Two powerful 50-watt speakers for music clarity, even while riding.
- Remote control pad on left speaker to quickly and easily change songs and volume.
- Music will play even after engine is turned off.

*Needs harness (278003684) if installed with more than two electrical accessories.*

*\* While supplies last*

NEW

# Touchscreen Garmin GPS



## FEATURES

- Bright, sunlight-readable 9" (23 cm) touchscreen Garmin GPS.
- Transducer not included, provides GPS function only.
- Features a quick-release bail mount for quick installation and removal.
- Preloaded worldwide basemaps and compatible with Bluechart® G3 coastal charts (sold separately).
- Share data and maps with select ECHOMAP devices on your network.
- Use built-in Wi-Fi® to pair with the free ActiveCaptain™ app for access to OneChart™, smart notifications, Garmin Quickdraw™ Community data and more.
- Standard on FishPro Trophy model.



# Electronics & Electrical

**NEW**



## Garmin ECHOMAP™ UHD 9" sv GPS

RXT, RXT-X, GTX, Wake Pro (2018 and up) / RXP-X (2021 and up) / GTI, GTI SE, GTR, GTR-X, Wake (2020 and up) / All FishPro models (2019 and up), Explorer Pro

**295101262 \$1,727.99**

- Bright, sunlight-readable 9" (23 cm) touchscreen Garmin GPS.
- Transducer not included, provides GPS function only.
- Features a quick-release bail mount for quick installation and removal.
- Preloaded worldwide basemaps and compatible with Bluechart® G3 coastal charts (sold separately).
- Share data and maps with select ECHOMAP devices on your network.
- Use built-in Wi-Fi® to pair with the free ActiveCaptain™ app for access to OneChart™, smart notifications, Garmin Quickdraw™ Community data and more.

Standard on FishPro Trophy model.  
Needs harness (278003684) if installed with more than two electrical accessories.



## Fish Finder and Depth Finder Garmin® GT15M-IH Transducer

**295100972 \$349.99**

- Garmin's GT15M-IH In-Hull Mid-Band CHIRP Transducer provides accurate depth readings even at high speed.
- Ideal for watercraft that want to install the transducer inside a fiberglass hull and not on the transom.
- It can be used with a hull deadrise angle between 0 and 25 degrees and is excellent for watercraft traveling at high speeds.
- In-Hull installation, no need to drill through the vessel; no drag.
- The 8-pin transducer with 1 plastic tank features mid-band CHIRP traditional sonar (85-165 kHz) and has a power rating of 600 W.

Requires Garmin® ECHOMAP™ UHD 72sv or 62cv GPS. Standard on FishPro Trophy models.



## Garmin® ECHOMAP™ UHD 72sv GPS

RXT, RXT-X, GTX, Wake Pro (2019 and up, except GTX Limited 2025 and up) / GTI, GTI SE, GTR, GTR-X and Wake 170 (2020 and up) / RXP-X (2021 and up) / Explorer Pro / FishPro (all models)

**295101264 \$1,241.99**

- Bright, sunlight-readable 7" (17.8 cm) touchscreen.
- GPS support included for installation.
- Transducer not included, provides GPS function only.
- Features a quick-release bail mount for quick installation and removal.
- Preloaded worldwide basemaps and compatible with Bluechart® G3 coastal charts (sold separately).
- Share data and maps with select ECHOMAP devices on your network.
- Use built-in Wi-Fi® to pair with the free ActiveCaptain™ app for access to OneChart™, smart notifications, Garmin Quickdraw™ Community data and more.

Needs harness (278003684) if installed with more than two electrical accessories.



## Secondary Battery Harness Kit

GTI, GTI SE, GTR, GTR-X and Wake 170 (2020 and up) / FishPro Scout

**295100990 \$191.49**

RXT, RXT-X, GTX and Wake Pro (2018 and up) / FishPro (2019-2021), Explorer Pro, FishPro Sport, FishPro Trophy

**295100991 \$317.99**

- Allows you to add a second unit to your dual battery setup.
- Will give you the extra juice you'll need to power electrical components like the BRP Audio - Premium System or Garmin Echomap GPS for longer periods.
- Kit includes necessary wiring and battery holder.

Additional battery sold separately (410301203).



## 10.25" Color Touchscreen Protector

Vehicle equipped with 10.25 in. Color Touchscreen Display

**860202680 \$27.49**

- Tempered glass - 0.3 mm thick.
- 9H hardness for tough protection.
- 100% bubble free adhesive.
- Anti-scratch, anti-glare and anti-fingerprint.
- Maintains 99.99% clarity.
- Easy to clean.
- Includes cleaning tools: wet wipe, dry wipe, dust absorber and soft cloth.



## Electric Connection Kit

All Spark models, GTI 90 (2017 and up)

**295100599 \$122.99**

- A very convenient and safe way to add electrical accessories.
- Plug-and-play connection.

Required in order to install the Depth Finder on specific models (Refer to the Depth Finders table).



### RF Programmable D.E.S.S.™ Key

All vehicles with D.E.S.S. key (2015 and up)  
**278003401** Green (Learning Key) **\$84.99**

All vehicles with D.E.S.S. key (2015 and up)  
**278003400** Yellow **\$84.99**

All vehicles with D.E.S.S. key (2015 and up)  
**278003402** Black **\$84.99**

All vehicles with D.E.S.S. key (2015 and up)  
**278003403** Orange **\$67.99**

- Digitally Encoded Security System (D.E.S.S.) key snaps on the vehicle and provides easy and quick starts.
- Anti-theft technology: the key communicates with the vehicle wirelessly, so the vehicle starts only when the key code matches the vehicle.
- The Programmable D.E.S.S. Key can also be programmed to limit the speed of the watercraft, enabling first time users and less experienced operators to learn how to operate while gaining the necessary confidence and control.
- Can be used as replacement key or second key.
- All Sea-Doo keys must be programmed at the dealer.



### Ski and X Package Module

RXT, RXT-X, GTX, GTX Limited, Wake Pro (2018-2023) / GTI (2018-2019) / GTI SE, GTI Limited, GTR, GTR-X, Wake (2018-2023) / All FishPro models (2019-2023) / Explorer Pro (2023)  
 2024 and up: GTX (230 hp, 300 hp), GTX Limited, Wake Pro, GTR, GTR-X, Explorer Pro (230 hp), FishPro Apex  
**295100857** **\$201.99**

- One module that includes both Ski and X Package functions:
- Activates ski mode: Offers a choice of different preset acceleration curves for the perfect launch every time when towing a skier or wakeboarder, plus steady tow speed.
- Activates X package functions on gauge.
- See X Package Module description to find out which X features it unlocks on your vehicle.
- User-friendly interface on gauge.
- Simple plug-in connection.
- Includes hardware necessary for installation.
- Standard on Switch Sport models.



### RF Programmable D.E.S.S.™ Key Kit

Spark  
**295100945** **\$84.99**

- Digitally Encoded Security System (D.E.S.S.) key's ball-and-socket design provides riders with easy and quick starts.
- Anti-theft technology: the key communicates with the vehicle wirelessly, so the vehicle starts only when the key code matches the vehicle.
- The RF Programmable D.E.S.S. Key can also be programmed to limit the speed of the watercraft, enabling first time users and less experienced operators to learn how to operate while gaining the necessary confidence and control.
- All Sea-Doo keys must be programmed at the dealer.
- Can be used as replacement key or second key.
- Includes RF programmable D.E.S.S.™ Key and D.E.S.S. post.

*Requires part numbers for installation:*  
 SPARK without iBR\*: 278003491  
 SPARK with iBR:  
 2017 and prior: 278003490  
 2018 and up: 278003823  
 SPARK TRIXX:  
 2017 and prior: 278003490 and 278003195  
 2018 and up: 278003823 and 278003195  
 \* Intelligent Brake and Reverse (iBR).  
 Unlike previous D.E.S.S. Key kits, harness now sold separately.



### Ski and X Package Module

2024 and up: RXT-X, RXP-X, GTX (170 hp), GTI, GTI SE, Wake, Explorer Pro (170 hp), All FishPro models (except FishPro Apex)  
**295101271** **\$204.99**

- One module that includes both Ski and X Package functions.
- Activates ski mode: Offers a choice of different preset acceleration curves for the perfect launch every time when towing a skier or wakeboarder, plus steady tow speed.
- Activates X Package Module functions.
- See X Package Module for complete list of functions.
- User-friendly interface on gauge.
- Simple plug-in connection.
- Includes hardware necessary for installation.



### Key Bracelet

RF Programmable D.E.S.S.™ Key  
**278004088** **\$29.99**

- Bracelet only.
- RF Programmable D.E.S.S.™ Key sold separately.



### 12-Volt Outlet and Installation Kit

Spark (2023 and prior) / GTI, GTS, GTR, Wake 155 (2019 and prior) / RXP-X (2020 and prior)  
**295100577** **\$69.49**

GTX and RXT without suspension and Wake Pro (2016-2017)  
**295100675** **\$74.99**

- Use this 12 V outlet to charge your phone or GPS unit.
- Equipped with waterproof cover to prevent water infiltration.

*Needs harness (278003684) if installed with more than two electrical accessories.*



## DEPTH FINDERS

- Display the water depth below the hull.
- Plug-and-play connection.
- Intergrates depth display into gauge menu.
- Does not require Garmin ECHOMAP GPS screen for installation.



MODEL	YEAR	SKU	PRICE
Spark	2014 and up	295100679	\$480.99
GTI 90°, GTI 130, GTI SE, GTR, GTR-X, Wake 170	2020 and up	295100872	\$480.99
GTX, Explorer Pro	2018 and up	295100927	\$481.49
GTX Limited	2018 and up	295100927	\$481.49
RXT, RXT-X	2018 and up	295100927	\$481.49
RXP, RXP-X	2018 and up	295100927	\$481.49
Wake Pro	2018 and up	295100927	\$481.49

*Needs harness (278003684) if installed with more than two electrical accessories.*

## BILGE PUMP KITS

- Keeps engine compartment dry for added peace of mind.
- Includes all necessary items for installation (bilge pump, mounting bracket, bilge fitting, hose and hardware).
- Plug and play installation: Plugs directly into watercraft fuse box.



MODEL	YEAR	SKU	PRICE
Spark	2014 and up	295101218	\$197.99
Wake	2020 and up	295101035	\$227.99
GTI, GTI SE, GTR, GTR-X	2020 and up	295101035	\$227.99
FishPro (All models)	2019 and up	295101035	\$227.99
Explorer Pro, GTX, GTX Limited	2018 and up	295101035	\$227.99
RXT, RXT-X	2018 and up	295101035	\$227.99
RXP-X	2021 and up	295101035	\$227.99
Wake Pro	2018 and up	295101035	\$227.99

*Needs harness (278003684) if installed with more than two electrical accessories.*



## USB Port

RXT, RXT-X, GTX, Wake Pro (2018 and up) / RXP-X (2021 and up) / GTI, GTI SE, GTR, GTR-X, Wake (2020 and up) / All FishPro models (2019 and up), Explorer Pro

**295100710**

**\$149.99**

- Allows you to charge your devices like phone and action camera.
- USB charger equipped with a smart module that detects the amperage your phone needs so you always enjoy consistent charge time and never have to worry about frying your device.

*Needs harness (278003684) if installed with more than two electrical accessories.*

# Body Accessories



## Touring Windshield

GTX, GTX Limited, RXT-X, Wake Pro, FishPro Sport, FishPro Trophy  
**295101017** **\$399.99**

- Stay protected from wind and splash from waves with 23-inch (58 cm) windshield.
- Seamlessly integrated with thermoforming construction for crystal-clear vision.
- Includes windshield support, bag and Allen wrench for easy transportation and installation.



## Wind Deflectors for Handlebar

GTX, RXT, RXT-X, and Wake Pro (2010 and up) / GTI, GTS and Wake (2011 and up) / GTR, GTR-X and RXP-X (2012 and up) / Spark (2014 and up)  
**295100762** **\$137.99**

- Design delivers better protection and great style.
- Protection from cold wind and water splashes.
- Sold in pairs.

*Not compatible with Touring Windshield (295101017)*



## Footwell Grip Mats

Spark (2024 and up)  
**295101140** **\$350.99**

- Thick EVA foam mats.
- Attached to ABS plates.
- Attached to the top deck with self-sealing fasteners.
- No need to stick the mats to surfaces.



## Floorboard Wedges

RXT, GTX and Wake Pro (2018 and up) / FishPro (2019-2021), FishPro Apex, FishPro Sport, FishPro Trophy, Standard on RXT-X (2018 and up), Explorer Pro  
**295100745** **\$152.49**

- Designed for high performance riding, extended angled floorboard wedges will keep all riders and passengers firmly planted, comfortable and secure.
- When used in conjunction with our Ergolock Knee Pads, the wedges ensure everyone can enjoy the full capabilities of the watercraft.



## Floorboard Wedges

GTI, GTI SE, GTR, GTR-X, Wake 170 (2020 and up) / FishPro Scout, Standard on RXP-X (2021 and up)  
**295100926** **\$164.49**

- Designed for high performance riding, extended angled floorboard wedges will keep all riders and passengers firmly planted, comfortable and secure.
- When used in conjunction with our Ergolock Knee Pads, the wedges ensure everyone can enjoy the full capabilities of the watercraft.

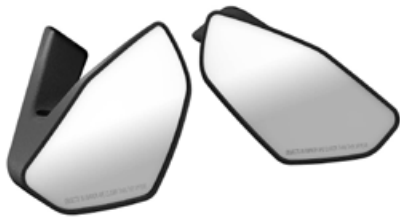


## Angled Gunwale Footrests

RXT, RXT-X and GTX (2018 and up)  
**295100793** **\$138.49**

- 4' long angled footrests with integrated mats, fixed on the upper outside edge of the footwell on each side of the watercraft.
- Provide a comfortable and secure position for the feet and legs while fishing from the side of the watercraft.
- Protect the paint finish on the edge of the footwells from abrasion caused by fishing.





Spark Mirrors

Spark (2024 and up)  
**295101144** **\$138.49**

- Integrated design is located out of the way.
- Large field of view.
- Provides vision sitting or standing up.
- Sold in pairs.



Passenger Seat

RXP-X (2021 and up)  
**295100923** **\$529.99**

- Only way to have a passenger on a stock RXP-X.
- Two grab options for passengers, side and middle.
- No tools required for installation: simply remove driver cushion, unclip base, and clip on passenger seat.



Trixx for 2 Seat Kit

Spark Trixx for 1 (2024 and up)  
**295101259** Dazzling Blue **\$425.99**

Spark Trixx for 1 (2024 and up)  
**295101150** Dragon Red **\$425.99**

Spark Trixx for 1 (2024 and up)  
**295101222** Neon Yellow **\$319.49**

- Convert a Trixx for 1 watercraft into a Trixx for 2 in seconds.
- Includes mount and all hardware.



Fishing Seat\*

RXT, RXT-X, GTX and Wake Pro (2018 and up), Explorer Pro  
**295100882** **\$840.99**

- Designed for ease of movement from driver position to passenger for fishing.
- Optimized for fishing facing sideways with increased lateral stability when combined with the Angled Gunwale Footrests (295100793).
- Fits all watercraft colorations.

NEW



Ergolock™ R Racing Seat for GTR-X

GTR-X, RXP-X (2024 and up)  
**295101463** **\$1,069.99**

- A performance-ready Ergolock™ seat compatible with GTR-X.
- Adjustable saddle comfortably supports the rider during acceleration and anchors him when turning.
- 5 inches (13 cm) of adjustment to fit all riders.
- No tools required for installation.
- Same seat as RXP-X.

*Compatible with Passenger Seat (295100923).*

# Docking & Beaching



## LinQ Lite Fenders

Spark (2024 and up)

**295101138**

**\$138.49**

- Perfect-fit fenders for Spark models.
- LinQ Lite attachment system is fast and easy.
- Durable material also floats.
- Sold in pairs.



## Snap-in Fenders

Fit on all watercraft (except Spark 2024 and up)

**295100418**

**\$138.99**

- Protect your investment from dock damage with these easy-to-install and remove fenders designed specifically for Sea-Doo watercraft.
- Front and rear on the SPARK models ensure a solid mount in the optimal spot.
- The Snap-in Fenders float and the high-visibility orange color keeps them in sight.
- Patent pending.
- Sold in pairs.

*Requires Snap-in Fenders Installation Kit (295100550, 295100729 or 295100944) to install on models other than SPARK.*



## Snap-in Fenders Installation Kit

RXP-X (2012-2020) / GTI, GTR and GTS (2011-2019) / GTX, RXT, RXT-X and Wake Pro (2010-2017)

**295100550**

**\$27.49**

RXT, RXT-X, GTX and Wake Pro (2018 and up) / FishPro (2019-2021), Explorer Pro, FishPro Apex, FishPro Sport, FishPro Trophy

**295100729**

**\$36.99**

GTI, GTI SE, GTR, GTR-X and Wake 170 (2020 and up) / RXP-X (2021 and up) / FishPro Scout

**295100944**

**\$32.99**

- Lets you enjoy the fastest, easiest way to install protective fenders on your watercraft.
- Not required for SPARK models.



## Spark Speed Tie

Spark (2024 and up)

**295101142**

**\$352.49**

- Robust, integrated design.
- Stow out of the way.
- Easy access.
- Helps stabilize the watercraft while docked.
- 6 ft. (1.83 m) length.
- 3 per pack.



## Speed Tie

GTX, RXT, RXT-X, Wake Pro (2018 and up)

**295100885**

**\$265.99**

- Fully integrated watercraft mooring system, providing the ultimate in convenient, quick and secure docking.
- A must-have accessory that frees up storage space and ensures you have a dock line at all times.
- Easy-to-use integrated rope management system.
- ¼ inch (6.4 mm) double-braided rope, 5.2 feet (1.6 m) at front and 9 feet (2.8 m) at rear.
- Positive locking for worry-free docking.



## Speed Tie

Explorer Pro, FishPro (2019-2021), FishPro Sport, FishPro Trophy

**295100924**

**\$212.99**

- Fully integrated watercraft mooring system, providing the ultimate in convenient, quick and secure docking.
- A must-have accessory that frees up storage space and ensures you have a dock line at all times.
- Easy to use, integrated rope management system.
- ¼-inch (6.4 mm) double-braided rope, 11.5 feet (3.5 m) at front.
- Positive locking for worry-free docking.





### Spike Anchor

All models

**295101255**

**\$159.49**

- 25 ft. rope.
- Can be used in sand, clay and lakes.
- Depth level indicator on the anchor.
- Gentle on your foot/hand when pressing on it.
- Easy to use, easy to clean.
- Lightweight, easily fits in front storage compartment of watercraft.
- Portable carry bag included.



### Folding Anchor

**295100750**

**\$67.99**

- 3.5 lb (1.6 kg) grapnel folding anchor with protective coating.
- Perfect for temporary mooring of watercraft and small boats in mud, sand, gravel, and rock.
- Includes a 25 ft. (7.62 m) marine-grade rope with an in-line buoy, heavy-duty stainless-steel snap hook, and a nylon storage case.
- Compact enough for the storage compartment.



### Sandbag Anchor

**295100661** Yellow

**\$39.99**

- Made of 600-denier solution-dyed yellow polyester fabric capable of holding an estimated 45 lb (20 kg) of wet sand.
- Measures 15 1/4" x 9" (40 cm x 22.9 cm).
- 16 ft. half-inch nylon strap (4.9 m x 1.3 cm).
- Plastic hook attachment and molded floater.

**NEW**



### Mooring Ropes

**295101475**

**\$31.94**

- Shock-cushioned nylon rope ideal for mooring your personal watercraft.
- 15 ft. (4.6 m) length.
- Highly durable, high strength.
- Sold in pairs.



### Dock Tie

**295100851**

**\$46.49**

- Moor your watercraft with this floating Sea-Doo shock-cushioned nylon rope.
- Protects your watercraft and keeps it moored.
- One per package.

# Riding Essentials



## Safety Equipment Kit

295100330 \$22.49

- This kit includes all the essentials for your watercraft.
- 50' (15 m) of buoyant heaving line, bailer, whistle and watertight flashlight.



## Registration Kit

3" (7.6 cm) All watercraft  
295100570 Black \$41.49

- High-quality UV-resistant registration kit.
- 3" (7.6 cm).
- Easy-to-install without deformation, with a glue that will adhere to all surfaces, including SPARK.
- Available in two contrasting colors that meet mandatory regulations for height and size.



## Whistle

295500554 \$10.64

- "Pea-less" whistle.
- Produces an extremely loud, high, penetrating sound that can be heard over long distances.
- Unaffected by water; just clear with one quick blow.



## Registration Kit

3" (7.6 cm) All watercraft  
295100578 Light Grey \$35.99

- High-quality UV-resistant registration kit.
- 3" (7.6 cm).
- Easy-to-install without deformation, with a glue that will adhere to all surfaces, including SPARK.
- Available in two contrasting colors that meet mandatory regulations for height and size.



## Fire Extinguisher

295100833 White \$35.99

- A requirement for any watercraft.
- Designed to fit in any fire extinguisher case holder.
- Ideal for grease, oil and electrical fires.
- US and Canadian Coast Guard approved.



## Registration Kit

4" (10.2 cm) All watercraft · Meets international laws  
295100631 Black \$43.49

- High-quality UV-resistant registration kit.
- 4" (10.2 cm).
- Easy-to-install without deformation, with a glue that will adhere to all surfaces.
- Meets mandatory regulations for height and size and international laws.

## KARAVAN

Karavan Trailers is Sea-Doo's supplier of choice for trailers for over 15 years. Ranked the #1 independent trailer manufacturer in marine trailer sales, their Sea-Doo MOVE trailer line-up will cover the complete offering of Sea-Doo PWC. To discover more, visit their website or ask your local dealer.

Online quote at:

[www.karavantrailers.com](http://www.karavantrailers.com)  
[sales@karavan.com](mailto:sales@karavan.com)

Call us at:

1-920-928-6200 and select  
prompt 8





# Add a Splash of Color



Customize your wrap coloration, design and even add registration numbers. For more details, see [scsunlimited.com](https://scsunlimited.com).

Custom Graphics are now available to customize your Personal Watercraft and make a statement on the water. With our range of colors and design options, you can create a personalized look that reflects your unique style.



---

## New Graphic Kits





Concept Marine Design specializes in innovative marine design and engineering, offering custom solutions like the MotoMarine SeaDek decking system. Their products enhance safety, comfort, and aesthetics for marine vessels through high-quality craftsmanship and advanced technology.



## Measurement

Our Certified SeaDek® installers digitize with pinpoint accuracy, supported by our team of CAD architects.

## At-home installation

Our certified SeaDek® installers come to you for a professional installation, warranty included.

## Design concept

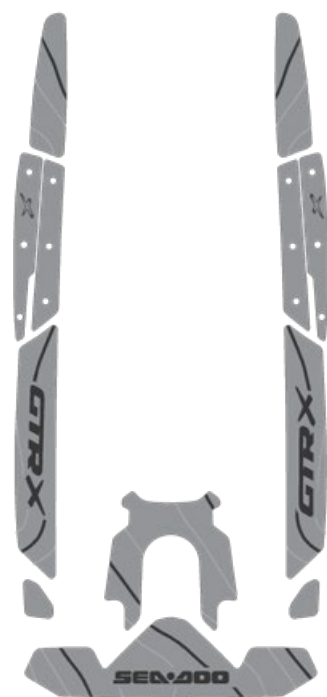
Our graphic architects transform your measurements and preferences into a bespoke SeaDek® design, ready for CNC cutting in the factory.

## SeaDek® production

Our state-of-the-art CNC machines shape your customized SeaDek® design, even incorporating your logo, before moving on to the installation stage.

Online quote at:  
**[conceptmarinedesign.com](http://conceptmarinedesign.com)**

Call us at:  
**1-833-SEADEK-0**







Parts &  
Maintenance



# Parts & Maintenance

Maintenance Checklist	37
Utility Equipment	38
Body Frame	38
Engine Cooling	38
Drive	39
Maintenance Products	41
Oil Change Kit	43
XPS Products	44
Cleaning & Care Products	46
How to Use Them	48





# Maintenance Checklist



## Sea-Doo Operator's Guide

This is a general overview of the main maintenance milestones. Maintenance requirements can differ depending on your exact personal watercraft. Follow the operator's guide for exact maintenance to be performed. Scan the QR code to access the all operator's guides.

### 1 Get Ready with XPS

	Oil Change Kit		Extended Life Pre-Mixed Coolant
	Jet Pump Bearing Grease		Hull Cleaner
	Vinyl & Plastic UV Protectant		All-Purpose Cleaner & Degreaser
	Wash & Wax		Black Plastic & Rubber Restorer

### 2 Have You Checked These This Season?

	Spark Plugs		Battery
	Wear Ring		Impeller
	Anodes		Carbon Ring



## Sea-Doo Fit Validation

Confirm your parts fit with the Electronic Parts Catalog.

Keep your personal watercraft in mint condition with XPS and BRP genuine parts.

# Utility Equipment



Yuasa Battery

410301203 \$154.99

- Yuasa battery YTX20L (18 Ah).
- Factory-activated.
- Maintenance-free.
- AGM construction.

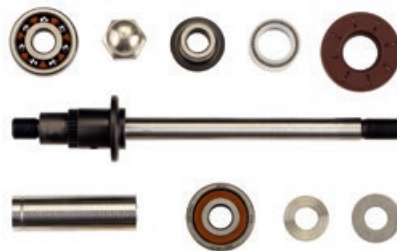


Lift Kit

295100758 \$979.49

- Accurately lifts and positions your watercraft with a lift kit of nylon webbing and vinyl-coated steel lift plates.
- Lifting capacity of 1,200 lb (544 kg).
- Allows lifting from both straight and angled positions.

# Engine Cooling



Supercharger Repair Kit

Fits all 215, 255 and 260 hp models  
420881102 \$499.99

- Complete kit to rebuild your supercharger.
- Made of quality Sea-Doo genuine parts and metal washers to increase reliability.

# Body Frame



Sacrificial Anodes

Outside diameter: 26 mm. Height: 6 mm  
271001920 \$15.99

Outside diameter: 26 mm. Height: 13 mm  
271001813 \$18.99

1/4-18 NPT Anode for intercooler on models 260 and 300 hp (2016 and up)  
271001942 \$18.76

- Sacrificial anodes are specifically designed to protect parts of your personal watercraft that are underwater from galvanic corrosion.
- Like the name implies, they essentially "sacrifice" themselves by absorbing the electrochemical process of corrosion to prevent metal components like the impeller, jet pump nozzle or engine from being "eaten away" instead.
- Galvanic corrosion can cause major damage if not controlled.



Front and Rear Deck Hardware Upgrade Kit

Spark  
295100849 \$74.99

- Includes 31 washers for front and rear deck, plus one extra washer.
- Sturdy stainless-steel washer kit directly replaces the original plastic deck washers.
- Provides an awesome cosmetic upgrade along with increased durability.
- Precision-machined washers are electropolished, providing excellent fit and finish.
- A must for repeatedly removing and replacing your deck for regular maintenance and inspection.



Main Deck Hardware Upgrade Kit

Spark  
295100848 \$62.99

- Includes 22 washers for main (center) engine access deck, plus one extra washer.
- Sturdy stainless-steel washer kit directly replaces the original plastic deck washers.
- Provides an awesome cosmetic upgrade along with increased durability.
- Precision-machined washers are electropolished, providing excellent fit and finish.
- A must for repeatedly removing and replacing your deck for regular maintenance and inspection.

# Drive

## IMPELLERS



- High performance impellers designed specifically to enhance engine performance and calibration.
- Offer perfect fit with wear ring and driveshaft components.

ENGINE	MODEL	YEAR	SKU	PRICE
60/90	Spark	2014 and up	267000948	\$329.99
	GTI			
	GTS	2017-2019	267000919	\$391.99
	GTI SE 90			
130/155	GTI 90	2020 and up	267001046	\$391.99
	GTI 130 & 155			
	GTI SE 130 & 155	2009-2019	267000940	\$391.99
	GTS 130			
	GTI 130	2020 and up	267001044	\$369.99
	GTI SE 130			
	GTI Pro	2020/2021	267001076	\$391.99
	GTX Pro			
	Wake 155	2011-2017	267000940	\$391.99
		2018-2019	267001019	\$391.99
170	GTX 155	2011-2017	267000943	\$391.99
	GTX S 155	2018-2019	267001019	\$391.99
	FishPro 155	2019	267001019	\$391.99
	FishPro Scout 130	2022	267001044	\$369.99
215	GTI SE 170			
	GTX 170			
	Wake 170	2020 and up	267001076	\$391.99
	FishPro 170			
230	FishPro Sport 170			
	FishPro Trophy 170			
	GTR 215	2014-2016	267000801	\$391.99
	GTX 215			
	GTX Limited 215	2011-2016	267000756	\$391.99
	Wake Pro 215			
	GTR 230	2017-2019	267000957	\$497.99
	GTR-X 230			
	GTX Limited 230	2017	267000954	\$497.99
	Wake Pro 230			
255/260	GTX 230	2018	267001021	\$497.99
	GTX Limited 230			
	Wake Pro 230	2019	267001038	\$497.99
	RXT 230			
	GTX 230	2020-2021	267001045	\$469.99
	GTX Limited 230			
	Wake Pro 230			
	GTR 230			
	GTX 230	2022-2025	267001110	\$497.99
	Wake 230			
300	Wake Pro 230			
	Explorer Pro 230			
	GTR 230			
	GTX 230	2026	267001174	N/A
	Wake Pro 230			
	Explorer Pro 230			
	GTR 230			
	GTX Limited iS & S 260	2012-2016	267000945	\$497.99
	RXP-X 255	2009-2011	267000994	\$497.99
	RXP-X 260	2012-2015	267000984	\$497.99
325	RXT-X 260	2009-2010	267000974	\$497.99
	RXT iS 255 & 260			
	RXT 260			
	RXT AS 260	2011-2017	267000945	\$497.99
300	RXT IS 260			
	GTR-X	2024 and up	267001050	\$497.99
	GTX Limited	2016 and up	267000951	\$497.99
	RXT-X 300	2016-2023	267000951	\$497.99
	RXP-X 300	2016-2020	267000951	\$497.99
325	RXP-X 300	2021-2023	267001050	\$497.99
	RXT-X 325	2024 and up	267001124	\$497.99

See your certified BRP dealer to match the right parts to your watercraft.

## WEAR RINGS



- Simple, cost-effective way to keep the pump system operating like new.
- Restore tight clearance to your impeller.
- Reduce cavitation and recover lost performance caused by a worn ring.

MODEL	YEAR	SKU	PRICE
Spark	2014-2022	267000925	\$81.49
GTI 90	2017-2022	267000897	\$84.99
GTI SE 90	2017-2018	267000897	\$84.99
GTI Pro	2020	267001036	\$84.99
GTI/GTI SE 130	2009-2022	267000419	\$84.99
GTI SE 155	2009-2019	267000419	\$84.99
GTR 215	2012-2016	267000372	\$84.99
GTR 230 (all models)	2020 and up	267000917	\$84.99
GTR-X 300	2024 and up	267000917	\$84.99
GTS 90	2017-2019	267000897	\$84.99
GTS 130	2011-2016	267000419	\$84.99
GTS Pro 130 (Europe)	2011	267000419	\$84.99
GTS RENTAL 130	2014-2015	267000419	\$84.99
GTX 155	2009-2019	267000419	\$84.99
GTX S 155	2009-2017	267000419	\$84.99
GTX 170	2021-2022	267000419	\$84.99
GTX 215/255/260	2009-2017	267000372	\$84.99
GTX 230	2018	267000372	\$84.99
	2019 and up	267000917	\$84.99
GTX Limited 230	2019-2022	267000917	\$84.99
GTX Limited 300	2016-2022	267000917	\$84.99
GTX Pro	2020	267001036	\$84.99
FishPro Sport, FishPro Scout, FishPro Trophy	2019-2022	267000419	\$84.99
RXP-X (all models, except 300 hp)	2009-2015	267000372	\$79.99
RXP-X 300	2016-2023	267000917	\$79.99
RXP-X 325	2024 and up	267000917	\$79.99
RXT (all models, except 300 hp)	2009-2018	267000372	\$84.99
RXT 230	2019	267000917	\$84.99
RXT-X 300	2016-2023	267000917	\$84.99
RXT-X 325	2024 and up	267000917	\$84.99
Wake 155	2009-2019	267000419	\$84.99
Wake 170	2021-2022	267000419	\$84.99
Wake Pro 215	2011-2016	267000372	\$84.99
Wake Pro 230	2009-2018	267000372	\$84.99
Wake Pro 230	2019 and up	267000917	\$84.99

See your certified BRP dealer to match the right parts to your watercraft.





### Top-Loader Intake Grate

Spark  
**295100845** **\$309.99**

- Intake grate with unique wing design for enhanced acceleration and top speed.
- Deep side rails improve straight line stability and handling.
- Durable black race coating protects from corrosion.
- IJSBA race legal.
- Pump Seal Kit (295100846) is required to fully unlock the benefits of the grate.



### Pump Seal Kit

Spark  
**295100846** **\$97.99**

- Location-specific, molded inserts fill voids in intake grate shoe that can bleed air into pump causing cavitation.
- Allows for a positive seal for maximum performance.
- Required when installing the Top-Loader Intake Grate (295100845).



### Pro-Series Sponson Kit

Spark  
**295100847** **\$379.99**

- Race proven Pro-Series Sponsons will dramatically improve the handling of your watercraft with their superior blade and backing plate design.
- Includes a bulletproof mounting system that features a solid backing plate and four anchor points with billet aluminum inserts in sponson fins.
- Sponson depth is adjustable to control the amount of influence they have on the craft.
- Easy installation, uses original mounting studs.



### Stainless Steel Wear Ring

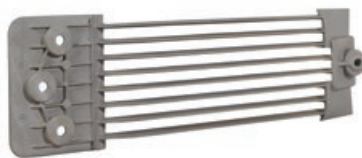
230 hp (2020 and up), 300 hp (2016 and up)  
**267001060** **\$381.49**

GTI, GTS, Wake, GTX 130, 155 and 170 (2011 and up)  
**267000800** **\$381.49**

Spark  
**295100649** **\$99.99**

GTR 215 (up to 2016), RXT and GTX 260 (2009-2017), RXT and GTX 230 (2017-2018), RXT and GTX 215 (2009-2017)  
**296000431** **\$248.99**

- Simple, cost-effective way to keep the pump system operating like new.
- Restore tight clearance to your impeller.
- Reduce cavitation and recover lost performance caused by a worn ring.



### Anti-Debris Water Intake Grate

GTI, GTS and Wake (2011-2019)  
**271001948** **\$114.99**

- Protects jet pump assembly and cooling system by blocking rocks and debris larger than 0.39" (10 mm).
- Helps avoid damage and premature wear of the impeller and the wear ring.
- Also helps reduce algae accumulation.
- Recommended if watercraft usage includes frequent beaching or shallow and swift water riding.
- Expect a slight performance reduction.

# Maintenance Products



## Salt-Away<sup>†</sup>

**295100219** Refill 1 US gal (3.785 L) **\$55.99**

**295100220** Refill 1 quart (946 ml) **\$26.99**

**295100218** Concentrate with dispenser 1 quart (946 ml) **\$64.99**

- Mixed with water, it washes away the salt and leaves a protective coating on the surface to prevent rust and corrosion.
- Can also be used for trailer wash and maintenance.



## Flush Kit

For watercraft that do not yet have a "T" fitting and don't have the threaded water outlet on the ride shoe.

**295500068** **\$31.99**

- A must to help keep your engine corrosion-free and to maximize performance.
- Kit includes all necessary components for a hassle-free flush.
- For watercraft that do not yet have a "T" fitting and don't have the threaded water outlet on the ride shoe.



## Salt-Away<sup>†</sup> - Dispenser Unit

**295100221** Dispenser Unit **\$45.99**

- Sea-Doo Salt-Away Dispenser Unit attaches between the hose and vehicle to dilute and disperse Salt-Away chemicals into the exhaust system. Add Salt-Away into the reservoir and simply apply water pressure for the system to work.



## Flush Adapter

**295500473** **\$9.04**

- For most watercraft models with a threaded water outlet fitting on the ride shoe.



## Flush Kit

Spark (standard on 2015 and up models)

**295100555** **\$44.49**

- A must to help keep your engine corrosion-free and to maximize performance.
- Kit includes all necessary components for a hassle-free flush.



## Coupler Hose

**295500258** **\$31.99**

- For most watercraft models that already have a "T" fitting.
- Also for watercraft models that use the flush adapter on the ride shoe water outlet.



### NGK® Spark Plugs

CR8EB	
<b>415130795</b>	N/A
DCPR8E	
<b>715900642</b>	<b>\$6.35</b>
KR9E-G	
<b>296000421</b>	<b>\$10.59</b>
KR9EI-8G	
<b>296000455</b>	<b>\$21.99</b>

- BRP dealers carry the full line of premium NGK Spark Plugs for Sea-Doo watercraft.
- Cold-rolled threads prevent cross-threading and damage to cylinder heads.
- Trivalent plating eliminates need for anti-seize.
- High-grade alumina silicate ceramic.



### Hand Pump with Container

<b>529035880</b>	<b>\$319.99</b>
------------------	-----------------

- Suitable for a range of liquids.



### Oil Filter

Rotax 900 ACE engine	
<b>420956123</b>	Rotax 900 ACE engine <b>\$13.77</b>
Rotax 1500 cc or more engine	
<b>420956744</b>	Rotax 1500 cc or more engine <b>\$20.99</b>

- Ask your certified BRP dealer to match the right parts for your watercraft.



### Oil Vacuum Tool

<b>295100244</b>	<b>\$35.49</b>
------------------	----------------

- Safely and easily removes engine oil.
- Activate with a power drill.



# Oil Change Kit



How to change  
your oil video

## Synthetic Oil Change Kit 5W-40

(9779486)

### Unmatched Reliability

The most advanced powersport oil designed for exceptional protection and longer engine life.

### Convenience

Provides the right amount of oil.  
Includes perfect-fit genuine parts.

### Cost Savings

Versus buying all the components separately.

### All Kits Include:

- 1 XPS oil
- 2 Oil filter
- 3 All service items needed



Oil application  
guide

# XPS Products



## XPS 4T 5W-40 Full Synthetic Oil Change Kit

9779485

9779486

- Ultra-convenient “all-in-one” oil change kit saves time and money.
- Includes XPS Synthetic Oil, oil filter, o-rings and washer.



## XPS 4T 5W-40 Full Synthetic Oil

9779492 1 qt. / 0.946 L

9779493 1 US gal / 3.785 L

- Designed for high performance off-road, on-road and PWC 4-stroke engines, including turbo or supercharged powersports engines.
- Off-road formula with premium anti-wear and anti-corrosion additives.
- Provides superior engine and transmission protection against rust and corrosion even in extreme conditions.
- 1 US gal / 3.785 L (9779493).
- 1 qt / 946 ml (9779492).



## XPS 2T PWC Synthetic Blend Oil

9779466 1 US gal / 3.785 L

- Designed for all fuel injection, carbureted, oil injection or premix 2-stroke personal watercraft.
- Provides low smoke, easy cold starting.
- Ensures maximum protection against corrosion and wear by keeping engine parts lubricated and clean.
- 1 US gal / 3.785 L.
- Other format available: 1 qt / 946 ml.



## XPS 2T Racing Synthetic Oil

9779180 1 qt. / 0.946 L

9779181 1 US gal / 3.785 L

- Designed for all fuel injection, carbureted, oil injection or premix 2-stroke personal watercraft.
- Provides low smoke, easy cold starting.
- Ensures maximum protection against corrosion and wear by keeping engine parts lubricated and clean.



## Extended Life Pre-mixed Coolant

9779150 1 qt. / 0.946 L

- Antifreeze/Coolant contains the correct dilution and the necessary additives to prevent corrosion and inhibit cavitation in BRP cooling systems.
- Long-life, 5-year formula specially formulated for BRP vehicles.
- Superior heat transfer.
- Ideal replacement for vehicles that normally use a 2-year antifreeze/coolant (green).
- 5 years (orange).



## Synthetic Grease

9779702 14 fl. oz. / 400 g

- Recommended for marine applications. This synthetic grease provides the best wear protection and water resistance available.



### Synthetic Jet Pump Oil

**9779221** 6 fl. oz. / 178 ml

- Synthetic Jet Pump Oil uses a unique combination of synthetic base stocks and additives that allow higher loads, superior shear stability and reduced oxidation compared to other synthetics and conventional API GL-5 oils.
- Recommended for use in Sea-Doo jet pump requiring oil.



### Jet Pump Bearing Grease

**9779703** 3.7 fl. oz. / 110 ml

- Specially made for high performance jet propulsion systems.
- High performance grease formulated to resist and repel water.
- Prevents the spread of surface oxidation, which causes rust and corrosion.



### Anti-Corrosive Lubricant

**9779701** 14 fl. oz. / 400 g

- Multipurpose lubricant that can also be used to prevent rust, corrosion and moisture intrusion.
- It contains extreme pressure additives that work as an all-around lubricant for just about anywhere lubrication is needed.



### Fuel Stabilizer

**9779171** 8 fl. oz. / 236 ml

- Ethanol-compatible and will stabilize fuel in your tank to keep it from breaking down and causing hard starting, throttle hesitation and poor run quality.
- Ethanol attracts moisture, and this product contains powerful anti-corrosion additives to protect fuel system components.
- Prevents problems associated with E10 fuels.



# Cleaning & Care Products



## Sea-Doo Hull Cleaner

**9779309** 2 fl. oz. / 650 ml

- First cleaner designed to clean all Sea-Doo® Hulls, including acrylic surfaces.
- Removes tough waterline stains.
- Eco-friendly formula for marina use.
- No heavy scrubbing required.



## Wash & Wax

**9779310** 16 fl. oz. / 473 ml

**9779311** 2 qt. / 1.89 L

- One step wash and wax.
- Effective on tough water stains, dirt and grime.
- Safe for all boat surfaces, including non-skid, vinyl and canvas.
- Low suds formula for easy rinsing.



## Spray Wax with Polymer

**9779320** 16 fl. oz. / 473 ml

- Uses a nanotechnology approach with polymer and wax.
- Long lasting protection.
- Quick, easy use.



## All-Purpose Cleaner & Degreaser

**9779313** 22 fl. oz. / 650 ml

**9779314** 2 qt. / 1.89 L

- Cleans toughest dirt and grime, black streaks, mold and mildew.
- Phosphate free, eco-friendly formula.
- Safe on all boat surfaces.
- Low-foam, easy rinse formula.



## Wax & Sealant Nano-polymer

**9779319** 16 fl. oz. / 473 ml

- Superior luster, shine and protection.
- Premium blend of two cross linked polymers, pure wax and silicone.
- Long lasting UV protection.
- Unmatched resistance to marine contaminants.



## Fabric Waterproofing

**9779321** 22 fl. oz. / 650 ml

- Unique fluoropolymer formula restores water repellency.
- Increases UV and stain protection.
- Prevents fading and premature aging of boat fabrics.
- Safe for natural and synthetic fabrics.



## Multi-Surface & Glass Cleaner

**9779316** 22 fl. oz. / 650 ml

- Easy waterless use.
- Polymer formula cleans and protects.
- Leaves no unwanted streaks or marks.
- Makes future cleaning easier by leaving a fine protective layer behind.



## Vinyl & Plastic UV Protectant

**9779317** 16 fl. oz. / 473 ml

- Powerful UV protection.
- Restores color and luster.
- Prevents fading and cracking.
- Non-greasy satin finish.
- Repels dust and grime.



## Black Plastic & Rubber Restorer

**9779335** 7.6 fl. oz. / 650225 ml

- Restores plastic, rubber and vinyl.
- Long lasting formula.
- Protects against UV rays.
- Brings back the like a new look.

# XPS

CARE



# How to Use Them

Spray the All-Purpose Cleaner & Degreaser product directly on the surface, use a soft brush for stubborn dirt, wipe off with a dry or wet cloth. Rinse with water if needed.



**All-Purpose Cleaner & Degreaser**  
9779313 - 22 fl. oz. / 650 ml, 9779314 - 2 qt. / 1.89 L

Mix the Wash & Wax in 30 ml (1 oz.) of cleaner for every 4 L (1 gal) of water used. Scrub the hull and deck with a clean wash mitt or soft brush and rinse thoroughly with water.



**Wash & Wax**  
9779310 - 16 fl. oz. / 473 ml, 9779311 - 22 fl. oz. / 650 ml

Spray the Vinyl & Plastic UV Protectant on surfaces and spread evenly with a dry and clean cloth. Allow five minutes for product to penetrate and wipe any excess with an additional cloth. Allow one to two hours for drying process to be complete.



**Vinyl & Plastic UV Protectant**  
9779317 - 22 fl. oz. / 650 ml

Spray Fabric Waterproofing product on your textile. The fabric must be clean, free of detergent and completely dry before applying waterproofing. Spray the product evenly until the fabric is uniformly wet. Allow 1 hour to dry.



**Fabric Waterproofing**  
9779321 - 16 fl. oz. / 473 ml

Spray the Sea-Doo Hull Cleaner product directly on the hull and allow 2 to 4 minutes to work, then scrub with a brush. Immediately rinse thoroughly with water, ideally with a pressure washer.



**Sea-Doo Hull Cleaner**  
9779309 - 22 fl. oz. / 650 ml

Spray the Multi-Surface and Glass Cleaner directly on the surface and wipe off excess with a clean, soft cloth.



**Multi-Surface & Glass Cleaner**  
9779316 - 22 fl. oz. / 650 ml

Shake well before using the Wax with Polymer. Ensure that the boat or PWC has been properly cleaned and is completely dry before application. Using a dry wax applicator, apply a thin layer over gelcoat and allow 30 minutes to dry, then wipe with a clean and dry microfiber cloth. The product can be applied with a rotary or orbital buffer.



**Spray Wax with Polymer**  
9779320 - 22 fl. oz. / 650 ml

Make sure the surface is clean and dry before applying. Pour the product on a wax applicator pad or clean cloth and apply evenly over surfaces that need to be treated. Keep away from water for a 24 hour period to allow the product to dry.



**Black Plastic & Rubber Restorer**  
9779335 - 22 fl. oz. / 650 ml



Discover our  
care products online





Apparel

# APPAREL

Sizing Chart	52
Find Your Perfect Fit	54
<b>NEW</b> Wave PFD	56
Sea-Doo	
Wave Grip PFD	57
Protective Gear	58
Neoprene Guide	64
Riding Gear	66
Sportswear	68
Protective Gear	75
Riding Gear	77
Family Fun	78
Play & Licensing Products	79
Replacements Parts	83

Always use the digital version  
of the Product Spec Book for  
the most updated information.







# Sizing Chart

## HOW TO MEASURE

For best results, have someone else take measurements. Measure body in swimsuit or undergarments. Tape must be snug but not tight. If measurements fall between two sizes, order the larger size.

### Chest

Measure under your arms, around the fullest part of your chest.

### Waist

Measure around your waist at the narrowest place.

### Hips

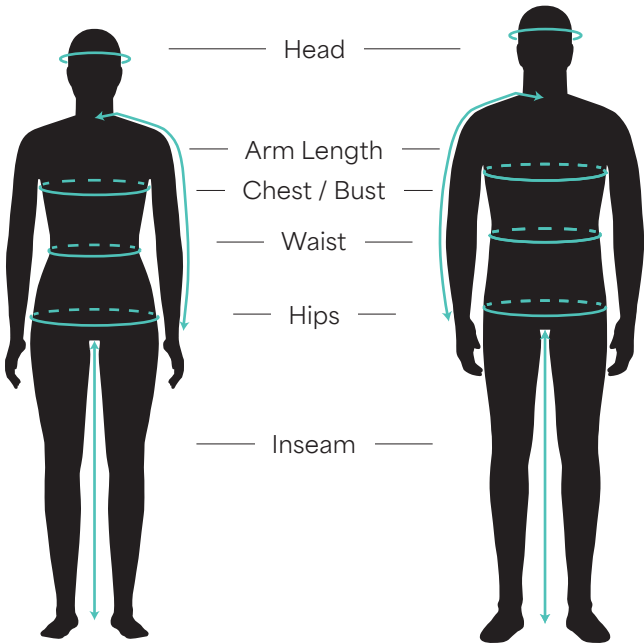
Stand with legs together, measure around the widest part of your hips, ensuring the tape is level.

### Arm Length

Let your arms hang down at your sides in a slightly bent position. Measure from the center of the back of your neck, along the length of your arm, to the wrist.

### Inseam

Without shoes, from crotch to the floor.



# What code represents your style?

- 1 Find your size and color.
- 2 The corresponding code is THE CODE you use to complete the part number on your order.

Example:  
287029 (style number Sea-Doo Wave Grip PFD)  
06 (sizing code M)  
76 (color code Aqua)

Full sku:      Style    Size    Color  
                 287029 | 06 | 76

## SIZE APPAREL

Adult		Adult		Youth/Kids	
Size	Code	Size	Code	Size	Code
ONE SIZE	00	3XL	16	3-4	79
2XS	01	4XL	18	5-6	52
XS	02	XS/S	90	7-8	54
S	04	S/M	72	10-12	49
M	06	M/L	91	14-16	50
L	09	L/XL	73		
XL	12	2XL/3XL	74		
2XL	14				

## SIZE FOOTWEAR

Size	Code
5	24
6	25
7	27
8	28
9	29
10	30
11	31
12	32
13	33

## COLORS

Name	Code	Name	Code	Name	Code
Clear	00	Magnesium	24	Aqua	76
White	01	Lilac	25	Army Green	77
Brown	04	Hi-Vis Yellow	26	Denim Blue	79
Charcoal Grey	07	Heather Charcoal	29	Blue	80
Silver	08	Red	30	Light Blue	81
Grey	09	Pink	36	Indigo Blue	82
Yellow	10	Ice	38	Royal Blue	83
Gold	11	Violet	41	Navy	89
Orange	12	Deep Purple	42	Black	90
Coral	13	Smoke	57	Black with Graphics	94
Lava Red	17	Green	70	Amber	95
Mixed Color	18	Teal	74	Ivory	97
Mirror Silver	22				

## MEN'S - APPAREL

Sizes	XS	S	M	L	XL	2XL	3XL	4XL
Sizing Code*	02	04	06	09	12	14	16	18
Chest (in.)	31-33	34-36	38-40	42-44	46-48	50-52	54-56	58-60
Waist (in.)	27 ½-28 ½	29 ½-30 ½	32 ½-34 ½	36 ½-39	41 ½-43 ½	46-48	50 ½-52 ½	54-57
Hips (Seat) (in.)	31 ½-32 ½	33 ½-35 ½	37 ½-39 ½	41 ½-43 ½	45-46 ¾	48 ½-50 ½	52 ½-54 ½	56 ½-58 ½
Arm Length (in.)	30 ½	32 ½	33	33 ½	34 ½	35	36	36 ½
Inseam (in.)	30 ½	32	32	32	32	32	32	32

\*Codes to complete the part number on your order.

## LADIES' - APPAREL

Sizes	XS	S	M	L	XL	2XL
Sizing Code*	02	04	06	09	12	14
Chest (in.)	33 ½-34 ½	35 ½-36 ½	37 ½-39	41-43	45-47	49-41 ½
Waist (in.)	27-28	29-30	31-32 ½	34 ½-36 ½	39-41 ½	43 ½-45 ½
Hips (Seat) (in.)	36 ½-37 ½	38 ½-39 ½	40 ½-42	43-45 ½	47-49 ½	51 ½-53 ½
Arm Length (in.)	30 ½	30 ½	31	31 ½	32 ½	32 ½
Inseam (in.)	30	30	30	30	30	30

\*Codes to complete the part number on your order.

PFD sizing information is available on page 63.  
 Shoe sizing information is available on page 75.  
 Glove sizing information is available on page 77.



## Did you know?

We redefined our fit for all of our new collections. You now have three categories for our riding gear and sportswear items. You can find the fit of each style in their description so you know what you are getting.

## FIT GUIDE

## Sportswear

SLIM

REGULAR

RELAXED

## Riding Gear

FITTED

REGULAR

RELAXED

# Find Your Perfect Fit

When it comes to choosing a personal flotation device (PFD), it's all about how you ride. Do you go for maximum mobility or all-day comfort? Lightweight performance or budget-friendly durability? Our comparison chart makes it easy to decide.

From premium materials to sleek designs, every Sea-Doo life jacket is built for safety and style—so you can look great, feel great, and ride your way.



	EXPLORER AIRFLOW The perfect mix of comfort and adventure	AIRFLOW For ultimate comfort	WAVE GRIP For comfort of the driver and the passenger
Comfort level	<div><div></div><div></div><div></div><div></div><div></div></div>	<div><div></div><div></div><div></div><div></div><div></div><div></div></div>	<div><div></div><div></div><div></div><div></div><div></div><div></div></div>
Price	<div><div></div><div></div><div></div><div></div><div></div><div></div></div>	<div><div></div><div></div><div></div><div></div><div></div><div></div></div>	<div><div></div><div></div><div></div><div></div><div></div><div></div></div>
Lumbar comfort zone	Yes	Yes	No
Airflow pads	Yes	Yes	No
Explorer package	Yes	No	No
Passenger handles	No	No	Yes
Chest pocket	No	No	Yes
Outer material	Ecoprene	Ecoprene	Ecoprene
Segmented ergonomic panels	10	10	
Types of interior layers for floating	3D Single Layer Float Biosoft Foam	3D Single Layer Float Biosoft Foam	Multi-Layers Float Foam



# Our PFDs at a Glance

Comb through this chart to determine the life jacket that best fits your Sea-Doo Life. There’s one for every type of rider—what’s yours?

All our PFDs have large armholes for riding comfort and are Coast Guard approved!



WAVE	EXPLORER	MOTION
For freedom of movement	For any adventure	Durable yet comfortable
<div><div></div><div></div><div></div><div></div><div></div></div>	<div><div></div><div></div><div></div><div></div><div></div></div>	<div><div></div><div></div><div></div><div></div><div></div></div>
<div><div>\$</div><div>\$</div><div></div><div></div><div></div></div>	<div><div>\$</div><div>\$</div><div></div><div></div><div></div></div>	<div><div>\$</div><div></div><div></div><div></div><div></div></div>
No	No	No
No	No	No
No	Yes	No
No	No	No
Yes	No	No
Evogrene	Ripstop Nylon	Polyester
6	4	4
Multi-Layers Float Foam	Multi-Layers Float Foam	Multi-Layers Float Foam

# NEW Wave PFD

The new Wave PFD is the new definition of freedom. Offering comfort and more value for the PWC rider!

Chest card pocket for convenience.

Durable YKK front zipper.

Six segmented panels for comfort and ease of movement.

Side panels in stretch lining for better comfort.

Loop at back neck to attach goggles.

D-ring for key lanyard.



# Sea-Doo Wave Grip PFD

The new Sea-Doo Wave Grip provides comfort for everyone. Whether you are the driver or the passenger, this PFD will be perfect for you.



Lumbar comfort zone.



Chest card pocket for convenience.

Multi-layers float foam inserts.

Side panels in stretch fabric for improved comfort.

Segmentations at front and back for better comfort and ease of movement.

Side passenger handles.

D-ring for key lanyard.



# Protective Gear



Black (90)

## Sea-Doo Wave Grip PFD (US/CA)

**287029** XS, S, M, L, XL, 2XL

Ecoprene PFD with passenger handles.

- Environmentally friendly ecoprene material that is rubber free, flexible, lightweight, breathable and quick dry.
- Side passenger handles.
- Chest pocket.
- Combination of PVC and polyethylene foam inserts.
- UTAK material will drain away excess water for quick drying and thermal regulated comfort.
- Comfortable fit.
- YKK front zipper.
- Segmentations at front and back for better comfort and ease of movement.
- Side panels in stretch lining fabric for improved comfort.
- Armholes cut large for riding comfort.
- Loop at back neck to attach your goggles to your vest.
- D-ring for key lanyard.
- Coast Guard approved.
- Shell: 100% polyester.
- Insulation: 20% PVC, 80% expandable polyethylene.

**NEW**



Silver (08)

## Sea-Doo Wave Grip PFD (US/CA)

**960009** XS, S, M, L, XL, 2XL

Evogrene PFD with passenger handles.

- Environmentally friendly Evogrene material that is made from recycled.
- Post-consumer plastic bottles into a performance fiber.
- Side passenger handles.
- Chest pocket.
- Combination of single layer float soft foam and multi-layers float foam inserts.
- UTAK material will drain away excess water for quick drying and thermal regulated comfort.
- Comfortable fit.
- YKK front zipper.
- Segmentations at front and back for better comfort and ease of movement.
- Side panels in stretch lining fabric for improved comfort.
- Armholes cut large for riding comfort.
- Loop at back neck to attach your goggles to your vest.
- D-ring for key lanyard.
- Coast Guard approved.
- Shell: 100% polyester.
- Insulation: 20% PVC, 80% expandable polyethylene.

**NEW**



Black (90), Blue (80), Pink (36), Red (30)

## Sea-Doo Wave PFD (US/CA)

**287037** XS, S, M, L, XL, 2XL

Ultra-durable and Light Evogrene PFD.

- Environmentally friendly Evogrene material that made from recycled.
- Post-consumer plastic bottles into a performance fiber.
- Chest pocket.
- Combination of single layer float soft foam and multi-layers float foam inserts.
- UTAK material will drain away excess water for quick drying and thermal regulated comfort.
- Comfortable fit.
- YKK front zipper.
- Segmentations at front and back for better comfort and ease of movement.
- Side panels in stretch lining fabric for improved comfort.
- Armholes cut large for riding comfort.
- Loop at back neck to attach your goggles to your vest.
- D-ring for key lanyard.
- Coast Guard approved.
- Shell: 100% polyester.
- Insulation: 20% PVC, 80% expandable polyethylene.

## PFD Size Guide

### Size recommendation:

Your PFD should fit snug around your body while providing comfort.

Your chest width is the key driver to define your PFD size. Measure the circumference of your chest at its widest point. Use our size chart to determine which size is closest to your measurement. If you fall in between two sizes we recommend you choose the smaller one. For safety purposes, a properly sized PFD should fit like a glove, stay in place but allow you to move freely.

### How to fit:

When trying on a PFD, loosen all straps, put it on and zip or buckle it up. Afterwards adjust all straps. PFDs have adjustable features to tighten it further around your chest and belly if needed.



Hi-Vis Yellow (26)

### Sea-Doo Explorer Airflow PFD (US/CA)

**287007** XS, S, M, L, XL, 2XL, 3XL

Soft and light PFD with a ultradurable ecoprene outer shell.

- Environmentally friendly ecoprene material that is rubber free, flexible, lightweight, breathable and quick dry.
- Vest interior constructed of eco-friendly single layer float biosoft foam.
- AIRFLOW SYSTEM: Interior EVA molding that keeps the life jacket's surface away from the skin.
- LUMBAR COMFORT ZONE: Extra foam padding to minimize the pressure on your lower back while bolstering support.
- MESH PANEL: Drain away excess water for quick drying and thermal regulated comfort.
- Comfortable fit.
- YKK front zipper.
- Side panels in stretch lining fabric for improved comfort.
- Armholes cut large for riding comfort.
- Camera mount.
- Whistle.
- Handheld VHF radio holder.
- Loop at back neck to attach your goggles to your vest.
- D-ring for key lanyard.
- Multiple pockets.
- Coast Guard approved.
- Shell: 100% polyester.
- Insulation: 100% Gaia foam.



Orange (12)

### Explorer Airflow PFD (US/CA)

**287009** XS, S, M, L, XL, 2XL, 3XL

Soft and light PFD with a ultradurable ecoprene outer shell.

- Environmentally friendly ecoprene material that is rubber free, flexible, lightweight, breathable and quick dry.
- Vest interior constructed of eco-friendly single layer float biosoft foam.
- AIRFLOW SYSTEM: Interior EVA molding that keeps the life jacket's surface away from the skin.
- LUMBAR COMFORT ZONE: Extra foam padding to minimize the pressure on your lower back while bolstering support.
- MESH PANEL: Drain away excess water for quick drying and thermal regulated comfort.
- Comfortable fit.
- YKK front zipper.
- Side panels in stretch lining fabric for improved comfort.
- Armholes cut large for riding comfort.
- Camera mount.
- Whistle.
- Handheld VHF radio holder.
- Loop at back neck to attach your goggles to your vest.
- D-ring for key lanyard.
- Multiple pockets.
- Coast Guard approved.
- Shell: 100% polyester.
- Insulation: 100% Gaia foam.



Hi-Vis Yellow (26)

### Airflow Sunset Edition PFD (US/CA)

**287011** XS, S, M, L, XL, 2XL, 3XL

Soft and light PFD with a ultra-durable ecoprene outer shell and the new Sunset Edition.

- Environmentally friendly ecoprene material that is rubber free, flexible, lightweight, breathable and quick dry.
- Vest interior constructed of eco-friendly single layer float biosoft foam.
- AIRFLOW SYSTEM: Interior EVA molding that keeps the life jacket's surface away from the skin.
- LUMBAR COMFORT ZONE: Extra foam padding to minimize the pressure on your lower back while bolstering support.
- MESH PANEL: Drain away excess water for quick drying and thermal regulated comfort.
- Comfortable fit.
- YKK front zipper.
- Side panels in stretch lining fabric for improved comfort.
- Armholes cut large for riding comfort.
- Loop at back neck to attach your goggles to your vest.
- D-ring for key lanyard.
- Coast Guard approved.
- Shell: 100% polyester.
- Insulation: 100% Gaia Foam.



PFD sizing information is available on page 63.



Grey (09)

**Sea-Doo Airflow PFD (US/CA)****285984** XS, S, M, L, XL, 2XL, 3XL

Soft and light PFD with a ultra-durable ecoprene outer shell.

- Environmentally friendly ecoprene material that is rubber free, flexible, lightweight, breathable and quick dry.
- Vest interior constructed of eco-friendly single layer float biosoft foam.
- AIRFLOW SYSTEM: Interior EVA molding that keeps the life jacket's surface away from the skin.
- LUMBAR COMFORT ZONE: Extra foam padding to minimize the pressure on your lower back while bolstering support.
- MESH PANEL: Drain away excess water for quick drying and thermal regulated comfort.
- Comfortable fit.
- YKK front zipper.
- Side panels in stretch lining fabric for improved comfort.
- Armholes cut large for riding comfort.
- Loop at back neck to attach your goggles to your vest.
- D-ring for key lanyard.
- Coast Guard approved.
- Shell: 100% polyester.
- Insulation: 100% Gaia foam.



Black (90)

**Airflow PFD (US/CA)****285998** XS, S, M, L, XL, 2XL, 3XL

Soft and light PFD with a ultra-durable ecoprene outer shell.

- Environmentally friendly ecoprene material that is rubber free, flexible, lightweight, breathable and quick dry.
- Vest interior constructed of eco-friendly single layer float biosoft foam.
- AIRFLOW SYSTEM: Interior EVA molding that keeps the life jacket's surface away from the skin.
- LUMBAR COMFORT ZONE: Extra foam padding to minimize the pressure on your lower back while bolstering support.
- MESH PANEL: Drain away excess water for quick drying and thermal regulated comfort.
- Comfortable fit.
- YKK front zipper.
- Side panels in stretch lining fabric for improved comfort.
- Armholes cut large for riding comfort.
- Loop at back neck to attach your goggles to your vest.
- D-ring for key lanyard.
- Coast Guard approved.
- Shell: 100% polyester.
- Insulation: 100% Gaia foam.

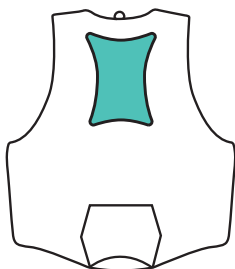


Blue (80), Lava Red (17), Orange (12)

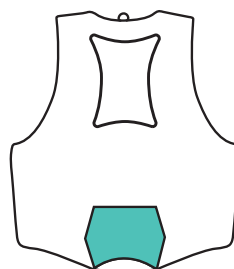
**Sea-Doo Airflow Sun Ed. PFD (US/CA)****285988** XS, S, M, L, XL, 2XL, 3XL

Soft and light PFD with a ultra-durable ecoprene outer shell and the new Sunset Edition.

- Environmentally friendly ecoprene material that is rubber free, flexible, lightweight, breathable and quick dry.
- Vest interior constructed of eco-friendly single layer float biosoft foam.
- AIRFLOW SYSTEM: Interior EVA molding that keeps the life jacket's surface away from the skin.
- LUMBAR COMFORT ZONE: Extra foam padding to minimize the pressure on your lower back while bolstering support.
- MESH PANEL: Drain away excess water for quick drying and thermal regulated comfort.
- Comfortable fit.
- YKK front zipper.
- Side panels in stretch lining fabric for improved comfort.
- Armholes cut large for riding comfort.
- Loop at back neck to attach your goggles to your vest.
- D-ring for key lanyard.
- Coast Guard approved.
- Shell: 100% polyester.
- Insulation: 100% Gaia foam.

**AIRFLOW SYSTEM**

Keeps the life jacket's surface away from the skin for a drier, more comfortable ride.

**LUMBAR COMFORT ZONE**

Extra padding to minimize the pressure on your lower back and bolster support.

**MESH PANEL**

Drain away excess water for quick drying and thermal regulated comfort.





Black (90)

### Sea-Doo Explorer PFD (US/CA)

**285964** XS, S, M, L, XL, 2XL, 3XL, 4XL

PFD made of Heavy-duty Rip-stop Nylon outer shell.

- Heavy-duty rip-stop nylon material.
- Multi-layers float foam inserts.
- Segmented foam at back bottom for increased comfort while seated.
- Armholes cut large for riding comfort.
- Camera mount.
- Whistle.
- Handheld VHF radio holder.
- Loop at back neck to attach your goggles to your vest.
- D-ring for key lanyard.
- Multiple pockets.
- Coast Guard approved.
- Shell: 100% nylon.
- Insulation: 100% expandable polyethylene.



Black (90), Hi-Vis Yellow (26)

### Sea-Doo Motion PFD (US/CA)

**285976** XS, S, M, L, XL, 2XL, 3XL, 4XL

PFD with heavy-duty nylon outer shell.

- Heavy-duty nylon material.
- Multi-layers float foam inserts.
- Armholes cut large for riding comfort.
- Loop at back neck to attach your goggles to your vest.
- Coast Guard approved.
- Shell: 100% nylon.
- Insulation: 100% expandable polyethylene.



Orange (12)

### Type II Adult Life Jackets - 4 pack

**287000** One size (CA)

**285982** One size (US)

Ideal in calm, inland areas for boating, not approved for PWC.

Approved by the Coast Guard. Type II life jacket.

- Fits adult 90 lb +, 30" - 50" chest.
- Set of four orange life jacket's.
- Clear storage bag with mesh opening for ventilation with strap across the top of the bag makes it easy to carry.
- Ideal in calm, inland areas for boating, not approved for PWC.
- Coast Guard approved.
- Shell: 100% polyester.
- Insulation: 50% PVC, 50% expandable polyethylene.



Yellow (10)

### Sea-Doo TYPE IV Throwable Foam Cushion (US)

**287006** One size

US Coast Guard approved type IV throwable flotation device.

- \* SOLD FOR UNITED-STATES ONLY \*
- Polyester outer shell withstands abrasion.
- Color: Yellow.
- Comfortable seat cushion.
- Shell: 100% polyester.
- Insulation: 100% expandable polyethylene.



Black (90)

### Junior Freedom PFD (US/CA)

**287030** L (55-88 lb) (25-40 kg)

PFD made of ultra-durable ecoprene outer shell for kids.

- Environmentally friendly ecoprene material that is rubber free, flexible, lightweight, breathable and quick dry.
- Ease of movement.
- Fitted.
- YKK front zipper.
- For kids of 55 to 88 lb.
- Coast Guard approved.



Black (90), Hi-Vis Yellow (26)

### Sea-Doo Junior Freedom PFD (US/CA)

**285972** L (55-88 lb) (25-40 kg)

PFD made of ultra-durable ecoprene outer shell for kids.

- Environmentally friendly ecoprene material that is rubber free, flexible, lightweight, breathable and quick dry.
- Ease of movement.
- Fitted.
- Combination of single layer float soft foam and multi-layers float foam inserts.
- YKK front zipper.
- Armholes cut large for riding comfort.
- For kids of 55 to 88 lb.
- Coast Guard approved.
- Shell: 100% polyester.
- Insulation: 50% PVC, 50% expandable polyethylene.



Black (90)

### Kids' Freedom PFD (US/CA)

**287031** M (33-55 lb) (15-25 kg)

PFD made of ultra-durable ecoprene outer shell for kids.

- Environmentally friendly ecoprene material that is rubber free, flexible, lightweight, breathable and quick dry.
- Ease of movement.
- Fitted.
- YKK front zipper.
- For kids of 33 to 55 lb.
- Coast Guard approved.



Black (90), Hi-Vis Yellow (26)

### Sea-Doo Kids' Freedom PFD (US/CA)

**287004** M (33-55 lb) (15-25 kg)

PFD made of ultra-durable ecoprene outer shell for kids.

- Environmentally friendly ecoprene material that is rubber free, flexible, lightweight, breathable and quick dry.
- Ease of movement.
- Fitted.
- Combination of single layer float soft foam and multi-layers float foam inserts.
- YKK front zipper.
- Armholes cut large for riding comfort.
- For kids of 33 to 55 lb.
- Coast Guard approved.
- Shell: 100% polyester.
- Insulation: 50% PVC, 50% expandable polyethylene.



## KIDS'



Navy (89)

**Sea-Doo Kids' Sandsea PFD (CA)****285951** S (9-14 kg) (CA)**285949** S (0-30 lb) (0-14 kg) (US)

PFD made of heavy-duty nylon outer shell for kids.

- Heavy-duty nylon material.
- Multi-layers float foam inserts.
- Armholes cut large for comfort.
- Life jacket size Small: comes with Coast Guard approved pillow. Certified for general boating use, not watercraft.
- Coast Guard approved.
- Child/Infant/Youth with pillow.
- CE approved EN395 standard.
- Shell: 100% nylon.
- Insulation: 100% expandable polyethylene.

## KIDS'



Charcoal Grey (07)

**Sea-Doo Kids' Sandsea PFD (US/CA)****285950** M (33-55 lb) (15-25 kg), L (55-88 lb) (25-40 kg)

PFD made of heavy-duty polyester outer shell for kids.

- Heavy-duty polyester material.
- Multi-layers float foam inserts.
- Armholes cut large for comfort.
- Life jacket size Small: comes with Coast Guard approved pillow. Certified for general boating use, not watercraft.
- Coast Guard approved.
- Shell: 100% polyester.
- Insulation: 100% expandable polyethylene.

## PERSONAL FLOTATION DEVICE

**Unisex size for Freedom, Airflow, Wave, Motion and Explorer life jackets**

Unisex Sizes	2XS	XS	S	M	L	XL	2XL	3XL	4XL
Men's Sizes	2XS	XS	S	M	L	XL	2XL	3XL	4XL
Women's Sizes	XS	S	M	L	XL	2XL	3XL	4XL	5XL
Sizing Code*	01	02	04	06	09	12	14	16	18
Chest (in.)	27-30	30-33	33-37	37-41	41-45	45-49	49-53	53-58	57-61

**Unisex size for Navigator life jackets only**

Unisex Sizes	XS	S/M	L/XL	2XL/3XL
Men's Sizes	XS/S	S/M	L/XL	2XL/3XL
Women's Sizes	S	M/L	XL/2XL	3XL/4XL
Sizing Code*	02	72	73	74
Chest (in.)	28-32	32-40	40-52	50-60

**Jr. and Kids' Freedom**

Sizes	M	L
Sizing Code*	06	09
Weight	33-55 lb	55-88 lb

**Kids' Sandsea**

Sizes	S	M	L
Sizing Code*	04	06	09
Weight	0-30 lb	30-50 lb	50-90 lb

Please refer to the product for size availability.  
 \*Codes to complete the part number on your order.



# Neoprene Guide

Designed for the Sea-Doo PWC life. Whether you are heading out for a full day of fishing, riding at high speeds or just cruising around, make sure you're always protected against the elements with our range of neoprene.

Our neoprene riding gear provides exceptional protection and comfort on every ride.



**NEOPRENE RIDING JACKET**  
Ultimate protection from the elements



**MONTEGO JACKET & PANTS**  
Ultimate protection for performance riders and cold weather

Protection	<div><div></div><div></div><div></div><div></div><div></div></div>	<div><div></div><div></div><div></div><div></div><div></div><div></div></div>
Warmth	<div><div></div><div></div><div></div><div></div><div></div></div>	<div><div></div><div></div><div></div><div></div><div></div><div></div></div>
Fit over PFD	Yes	No
Fit under PFD	No	Yes
Price	<div><div></div><div></div><div></div><div></div><div></div></div>	<div><div></div><div></div><div></div><div></div><div></div><div></div></div>
Gender	Men	Men & Women
Usage	Temperate weather. Performance riding. Recreation.	Cold weather. Performance riding. Water intrusion protection.



### NEW 2/2 MM SHORTY WETSUIT

For protection, mobility and better comfort



### NEOPRENE SHORTS

Great protection and comfort on high-intensity rides



### PROTECTIVE UNDERSHORTS

Breathable and lightweight first layer protection

■ ■ ■ □ □

■ ■ ■ □ □

No

Yes

💰 💰 💰 💰 □

Men & Women

Temperate weather.  
Short sleeves  
for better comfort.

■ ■ □ □ □

■ □ □ □ □

N/A

N/A

💰 □ □ □ □ □

Men & Women

Performance riding.  
Water intrusion protection.

■ ■ □ □ □

□ □ □ □ □

N/A

N/A

💰 □ □ □ □ □

Men & Women

Under your favorite  
boardshorts.  
Water intrusion  
protection.

# Riding Gear



Charcoal Grey (07)

## Men's Neoprene Riding Jacket

**288201** S, M, L, XL, 2XL, 3XL

2 mm Neoprene Riding Jacket to be worn over your PFD for extra warmth and protection of the elements.

- Content: 90% neoprene stretch fabric, 10% nylon.
- Fit: Fitted.
- UV protection.
- Adjustable hood and cuff.
- YKK durable front and pockets zippers.



Black (90)

## Men's Montego Jacket

**286817** S, M, L, XL, 2XL

¾ mm Neoprene Montego Jacket.

- Content: 90% neoprene, 10% nylon.
- Fit: Fitted.
- Integrated 2 mm Glideskin neoprene band in bottom hem.
- YKK auto lock durable front zipper.
- Raw edges at cuffs and collar.
- Contrast flatlock stitch construction prevents chafing.
- UV protection.



Black (90)

## Men's Montego Pants

**286818** S, M, L, XL, 2XL

¾ mm neoprene performance riding pants.

- Content: 90% neoprene, 10% nylon.
- Fit: Fitted.
- Ergonomic waistband with adjustable drawcord.
- High-waisted design for superior coverage while riding.
- 2 mm side neoprene stretch fabric for comfort and mobility.
- Textured neoprene and abrasion-resistant knees for durability.
- Glideskin neoprene leg hem.
- UV protection.



Black (90)

## Women's Montego Pants

**286820** XS, S, M, L, XL, 2XL

Ladies' ¾ mm neoprene performance riding pants.

- Content: 90% neoprene, 10% nylon.
- Fit: Fitted.
- Ergonomic waistband and tall back for more coverage.
- 2 mm side neoprene stretch fabric for better mobility.
- Textured neoprene and abrasion-resistant knees for better durability.
- Glideskin neoprene 2 mm at leg cuff hem to help the style stay in place.
- Durable.
- UV protection.
- Sea-Doo prints at leg and at back.



Teal (74)

## Women's Montego Jacket

**286821** XS, S, M, L, XL, 2XL

Ladies' ¾ mm neoprene performance riding jacket.

- Content: 90% neoprene, 10% nylon.
- Fit: Fitted.
- Bottom hem band Glideskin neoprene 2 mm.
- YKK auto lock durable front zipper.
- Raw edges at cuffs and collar.
- Contrast flatlock stitch construction prevents chafing.
- UV protection.
- Sea-Doo print at sleeve and back.



Black (90)

## Men's Neoprene Shorts

**286808** S, M, L, XL, 2XL, 3XL

2 mm Neoprene Riding Shorts.

- Ergonomic waistband and tall back for more coverage.
- Flat lock construction for more comfort.
- Side pocket with key loop.
- Fit: Fitted.
- Stretch fabric.
- UV protection.
- Moisture wicking.



NEW



Black (90)

Men's 2 mm Shorty Wetsuit

288304 S, M, L, XL, 2XL, 3XL

2 mm wetsuit for ultimate protection and comfort in moderate temperatures.

- 90% neoprene stretch fabric, 10% nylon.
- Fit: Fitted.
- UV protection.
- Open collar for better mobility with adjustable velcro.
- YKK durable back zipper.
- Glideskin seals on the edge of arms and legs.
- Back zip with extended puller.
- Inseam length: 10.5 inches.



Black (90)

Ladies' Neoprene Shorts

286786 XS, S, M, L, XL, 2XL

2 mm Neoprene Riding Shorts.

- Yoga-type improved waist cut.
- Fit: Fitted.
- Flatlock stitched construction is non chaffing on skin.
- Sea-Doo print on side.

NEW



Black (90)

Ladies' 2 mm Shorty Wetsuit

288305 XS, S, M, L, XL

2 mm wetsuit for ultimate protection and comfort in moderate temperatures.

- 90% neoprene stretch fabric, 10% nylon.
- Fit: Fitted.
- UV protection.
- Open collar for better mobility with adjustable velcro.
- YKK durable back zipper.
- Glideskin seals on the edge of arms and legs.
- Back zip with extended puller.
- Inseam length: 8 inches.



Black (90)

Women's 1.5 mm Neoprene Shorty Shorts

286824 XS, S, M, L, XL, 2XL

1.5 mm Neoprene Riding Short.

- Content: 90% neoprene, 10% nylon.
- Fit: Fitted.
- Inseam: 5".
- Ergonomic yoga waistband and tall back for more coverage.
- Flatlock stitch construction prevents chaffing.
- Stretch fabric.
- Moisture wicking.
- Sea-Doo print at back.



Black (90)

Men's Protective Undershorts

454581 XS, S, M, L, XL, 2XL, 3XL

Protective Undershorts to protect you from the elements while Sea-Doo riding.

- Content: 82% nylon, 18% spandex.
- Fit: Fitted.
- 220 gsm.
- 1.5 mm neoprene for better protection at seating area.
- 4-way stretch.
- 3D mesh pouch for support and ventilation.
- Inner elastic waistband.



Black (90)

Women's Protective Undershorts

286799 XS, S, M, L, XL, 2XL, 3XL

2 mm Neoprene Undershorts for protection around seating area.

- Inner elastic waistband.
- Fit: Fitted.
- Stretch fabric.
- UV protection.
- Moisture wicking.

# Sportswear



Charcoal Grey (07), Navy (89)

## Men's Sea-Doo Long Sleeve Rashguard

**288056** S, M, L, XL, 2XL

Long Sleeve Rashguard with loose fit.

- Content: 87% polyester, 13% spandex, 210 gsm.
- Fit: Relaxed.
- UV protection - 50 UPF.
- 4-way stretch.
- Quick dry.
- Large Sea-Doo logo on the sleeve.



Black with Graphics (94), Magnesium (24)

## Men's Short Sleeve Rashguard Signature

**454487** S, M, L, XL, 2XL

Short Sleeve Rashguard with loose fit.

- Content: 92% polyester, 8% spandex.
- Fit: Relaxed.
- UV protection - 50 UPF.
- 4-way stretch.
- Quick dry.
- Sea-Doo logo at center chest.



Black (90), Charcoal Grey (07)

## Men's Long Sleeve Rashguard Signature

**454459** S, M, L, XL, 2XL

Long Sleeve Rashguard with loose fit.

- Content: 92% polyester, 8% spandex.
- Fit: Relaxed.
- UV protection - 50 UPF.
- 4-way stretch.
- Quick dry.
- Sea-Doo logo at center chest.



Black (90), Coral (13), Hi-Vis Yellow (26)

## Women's Sea-Doo Long Sleeve Rashguard

**288058** S, M, L, XL

Long Sleeve Rashguard with loose fit.

- Content: 87% polyester, 13% spandex, 210 gsm.
- Fit: Relaxed.
- UV protection - 50 UPF.
- 4-way stretch.
- Quick dry.
- Large Sea-Doo logo on the sleeve.



Black (90), Lilac (25)

## Women's Short Sleeve Rashguard Signature

**454484** S, M, L, XL

Ladies' Short Sleeve Rashguard with regular fit.

- Content: 87% polyester, 13% spandex, 210 gsm.
- Fit: Relaxed.
- UV protection - 50 UPF.
- 4-way stretch.
- Sea-Doo logo at center front chest.



Lilac (25), White (01)

## Women's UV Protection Long Sleeve Shirt

**288100** XS, S, M, L, XL, 2XL

Women's long sleeves with sun protection features.

- Content: 92% polyester, 8% spandex.
- Fit: Relaxed.
- UPF 50 sun protection.
- Quick dry fabric that helps distribute your body heat and rapidly cools through regulated evaporation.
- Thumbhole opening at sleeve.
- Sea-Doo logo at bottom left.
- Mesh insert at chest.
- Raglan sleeve.

NEW



Magnesium (24), Navy (89)

### Men's Sea-Doo Technical Fishing Pocket Tee

288251 S, M, L, XL, 2XL, 3XL

New addition in our fishing inspired capsule, a technical pocket tee for men. Super soft, silky smooth and lightweight.

- Content: 77% polyester, 18% Lyocell, 5% spandex, 160 gsm.
- Fit: Regular.
- All-over print on chest pocket and logo Sea-Doo on right sleeve.

NEW



Denim Blue (79), Heather Grey (27)

### Men's Sea-Doo Fishing T-Shirt

288252 S, M, L, XL, 2XL, 3XL

Men's casual graphic T-shirt with artwork at back.

- Solid color: 60% cotton, 40% polyester.
- Heather color: 97% cotton, 3% polyester.
- Fit: Slim.
- Ribbed collar.
- Sea-Doo logo at left chest and fishing inspired artwork at back.

NEW



Magnesium (24), Navy (89)

### Men's Sea-Doo Fishing UV LS

288254 S, M, L, XL, 2XL, 3XL

Men's Sea-Doo UV Long Sleeve with artwork at front.

- Content: 88% polyester, 12% spandex, 150 gsm.
- Fit: Relaxed.
- UPF 50 sun protection.
- Quick dry fabric that helps distribute your body heat and rapidly cools through regulated evaporation.
- Raglan sleeve.
- Fish artwork printed at front.



Black (90), Magnesium (24)

### Men's UV Protection Hooded Shirt

454659 S, M, L, XL, 2XL

UV Protection Hooded Shirt, ideal to keep you safe with comfort.

- Content: 92% polyester, 8% spandex, 175 gsm.
- Fit: Relaxed.
- UV protection - 50 UPF.
- Quick dry.
- Built-in gaiter mask.
- Sea-Doo logo at center chest.

NEW



Magnesium (24), Navy (89)

### Unisex Fishing Curved Mesh Cap

288290 One size

Casual Mesh Cap with patch at front.

- Content: 100% cotton.
- Solid colored cap with contrasting mesh panel.
- Fishing inspired patch embroidered at front.
- Snapback closure at back.



Grey (09)

### Unisex Sea-Doo Fishing Hat

454673 One size

Lightweight and breathable fishing hat.

- Content: 100% polyester.
- Detachable chin cord with toggle.
- Floating brim.
- Removable neck flap to protect you from the elements.
- UV protection - 40 UPF.
- Vent opening at back.
- Sea-Doo logo at center front.





Black (90), Smoke (57)

### Unisex Sea-Doo Rag

**454690** One size

Quick dry Sea-Doo Rag.

- Content: 100% polyester.
- Lightweight, moisture-wicking, breathable fabric.
- UV protection – 50 UPF.
- Instantly transform into a headband or a facemask.

NEW



Navy (89), White (01)

### Men's Good Times Sea-Doo T-Shirt

**288261** S, M, L, XL, 2XL, 3XL

Men's casual graphic T-shirt with artwork at front.

- Content: 60% cotton, 40% polyester.
- Fit: Slim.
- Ribbed collar.
- Sea-Doo artwork with palm trees and quote at front.

NEW



Black (90), White (01)

### Men's Live The Sea-Doo Life T-Shirt

**288266** S, M, L, XL, 2XL, 3XL

Men's casual graphic T-shirt with artwork at front.

- Content: 60% cotton, 40% polyester.
- Fit: Slim.
- Ribbed collar.
- Sea-Doo quote at front.

NEW



Black (90), Smoke (57)

### Men's Sea-Doo Polo

**288257** S, M, L, XL, 2XL, 3XL

Men's Sea-Doo Polo quick-dry and anti-microbial.

- Content: 97% polyester, 3% spandex, 190 gsm.
- Fit: Regular.
- Button-down collar.
- Sea-Doo logo.



Black (90), Orange (12), Sand (03), Turquoise (Aqua) (76)

### Men's Signature Pullover Hoodie

**288186** S, M, L, XL, 2XL, 3XL

Comfortable Sea-Doo Hoodie.

- Content: 80% cotton, 20% polyester.
- Fit: Relaxed.
- Rib at cuffs and hem.
- Kangaroo pocket.
- Sea-Doo logo at center front.

NEW



Black (90), Denim Blue (79), White (01)

### Men's Sea-Doo Signature T-Shirt

**288359** S, M, L, XL, 2XL, 3XL

Our classic men's signature T-shirt with Sea-Doo logo at center front.

- Content: 60% cotton, 40% polyester.
- Fit: Slim.
- Ribbed collar.
- Sea-Doo logo at front.



Navy (89), Orange (12)

**Men's Lightweight Crew Tank Top**

**288017** S, M, L, XL, 2XL

Men's lightweight tank top.

- Content: 85% polyester and 15% spandex.
- Fit: Regular.
- UPF 30 sun protection.
- Quick dry fabric that helps distribute your body heat and rapidly cools through regulated evaporation.
- Easy care.
- Sea-Doo logo on the right shoulder.



Lilac (25), Turquoise (Aqua) (76), Wine (32)

**Women's Signature Pullover Hoodie**

**288246** XS, S, M, L, XL, 2XL

Comfortable Sea-Doo Hoodie.

- Content: 80% cotton, 20% polyester.
- Fit: Relaxed.
- Rib at cuffs and hem.
- Kangaroo pocket.
- Sea-Doo logo on the arm and at the back.

**NEW**



White (01), Wine (32)

**Women's Good Times Sea-Doo T-Shirt**

**288263** XS, S, M, L, XL, 2XL

Women's casual graphic T-shirt with artwork at front.

- Content: 60% cotton, 40% polyester.
- Fit: Slim.
- Ribbed collar.
- Sea-Doo artwork with palm trees and quote at front.

**NEW**



Black (90), Wine (32)

**Women's Sea-Doo Signature T-Shirt**

**288369** XS, S, M, L, XL, 2XL

Our classic women's signature T-shirt with Sea-Doo logo at center front.

- Content: 60% cotton, 40% polyester.
- Fit: Slim.
- Ribbed collar.
- Sea-Doo logo at front.



Coral (13), Lilac (25)

**Women's Racerback Tank**

**454701** XS, S, M, L, XL, 2XL

Ladies' Racerback Tank with a relaxed fit.

- Content: 77% polyester, 18% tencel, 5% spandex.
- Fit: Relaxed.
- Breathable, lightweight and comfortable fabric.
- Moisture wicking and quick-dry.
- Longer at back.



Navy (89)

### Youth Long Sleeve Rashguard

**454676** 3-4, 5-6, 7-8, 10-12, 14-16

UV Protection Youth Long Sleeve Rashguard ideal for keeping your child safe and comfortable.

- Content: 87% polyester, 13% spandex, 210 gsm.
- Fit: Relaxed.
- Fit: Loose fit.
- UV protection - 50 UPF.
- Raglan sleeve.
- Sea-Doo logo at front.



Hi-Vis Yellow (26)

### Unisex Sea-Doo Quick Dry Poncho by Slowtide

**288059** S/M, L/XL

Unisex quick dry Sea-Doo poncho by Slowtide.

- Content: 80% polyester, 20% polyamide.
- Fit: Relaxed.
- Hood drawcord adjustment.
- Button closure.
- Two pockets at front.
- Patch with Slowtide logo at left chest.
- Sea-Doo logo at front.
- Quick dry.



Lilac (25), Navy (89)

### Youth Palm Curved Cap

**288217** One size

Youth snapback curved cap.

- Content: 100% cotton.
- Palm tree and Sea-Doo logo embroidery at front.
- Sea-Doo patch embroidered at front.
- Contrasted brim.
- Snapback closure.



Black with Graphics (94), Hi-Vis Yellow (26), Royal Blue (83)

### Sea-Doo Quick Dry Towel by Slowtide

**288062** One size

Sea-Doo quick dry towel by Slowtide.

- Content: 80% polyester, 20% polyamide.
- Woven label with Slowtide logo at bottom right.
- Centered Sea-Doo logo.
- Quick dry.



Navy (89), White (01)

### Youth Live The Sea-Doo Life T-Shirt

**288373** 7-8, 10-12, 14-16

Casual Sea-Doo Graphic T-shirt for youth.

- Content: 60% cotton, 40% polyester.
- Fit: Regular.
- Ribbed collar.
- Colorful Sea-Doo quote at front.



Black with Graphics (94), Turquoise (Aqua) (76)

### Kid's Sea-Doo Quick Dry Poncho by Slowtide

**288061** One size

Youth quick dry Sea-Doo poncho by Slowtide.

- Content: 80% polyester, 20% polyamide.
- Fit: Relaxed.
- Kangaroo pocket at front.
- Patch with Slowtide logo at left chest.
- Sea-Doo logo at front.
- Quick dry.





Black (90)

### Unisex Sea-Doo Sets Us Free Straw Hat

**288219** S/M, M/L

Wide brim straw hat with adjustable chin strap.

- Sea-Doo Sets Us Free embroidered patch at front.



Black with Graphics (94)

### Unisex Sea-Doo Straw Hat

**454792** S/M, M/L

Wide brim straw hat with adjustable chin strap.

- Sea-Doo logo at front.
- Printed fabric under brim.



Black (90), White (01)

### Unisex Sea-Doo Reversible Bucket Hat

**288221** S/M, M/L

Reversible bucket hat.

- Content: 100% polyester.
- UPF 40 sun protection.
- Quick dry.





Black (90), Charcoal Grey (07), Denim Blue (79), Navy (89)

### Unisex Wave Signature Cap

**288203** One size

Signature Cap.

- Content: 100% cotton.
- Snap-back closure.
- Wave logo embroidery at front.
- Sea-Doo embroidery on the side.



Black (90), Navy (89)

### Unisex Sea-Doo Palm Mesh Cap

**288213** One size

Unisex mesh cap.

- Main content: 100% cotton
- 100% polyester mesh back panels.
- Adjustable.
- Palm artwork at front.
- Sea-Doo logo in silicone print at center front.



Black (90)

### Unisex Sea-Doo Sets Us Free Flat Cap

**288214** One size

Unisex flat cap.

- Content: 100% polyester.
- UPF 30 sun protection.
- Quick dry.
- Floatable.



Navy (89), White (01)

### Unisex Sea-Doo Laser Cut Mesh Cap

**288216** One size

Unisex breathable cap with laser cut mesh.

- Content: 100% polyester.
- UPF 30 sun protection.
- Quick dry.
- Palm tree and Sea-Doo logo embroidery at front.



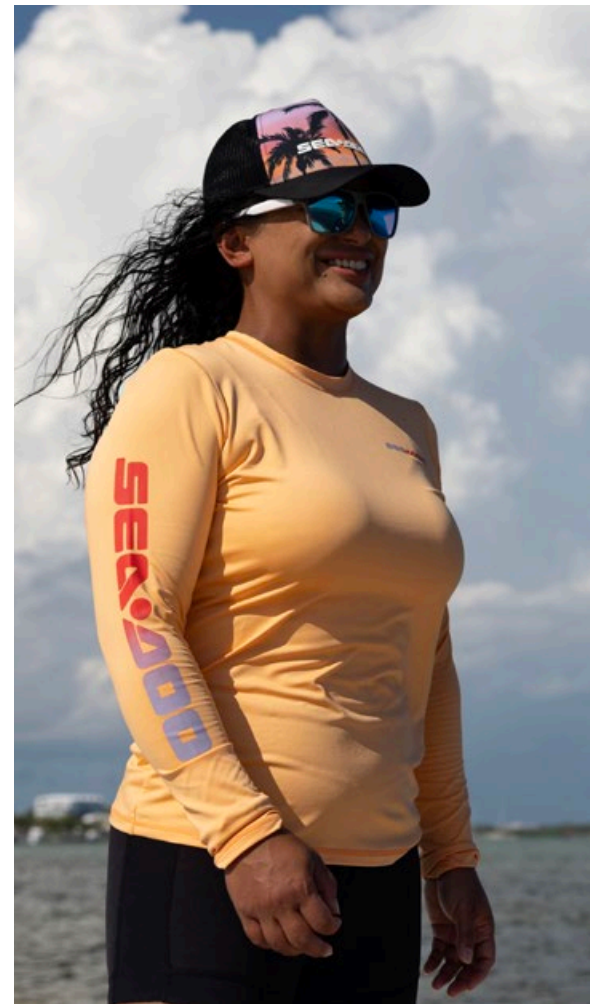
Black (90), Lilac (25)

### Women's Sun Protection Visor

**288215** One size

Ladies' adjustable sun protection visor.

- Content: 100% polyester.
- Buckle at the back for adjustment.
- Sea-Doo and wave logo in silicone print.



# Protective Gear

**NEW**



Grey (09)

## Sea-Doo AquaDry Sneakers

**444274** 5, 6, 7, 8, 9, 10, 11, 12, 13

Happy feet in and out of the water with the "AquaDry" shoes.

- Closed-cell waterproof material that always stays dry (dries with a wipe).
- Innovative design, made with EVA (ethylene vinyl acetate) giving the AquaDry shoes great cushioning and support properties.
- Non-marking and slip-resistant rubber outsole.
- Durable, water-resistant flat laces.
- These shoes float on water.

**UNISEX**



Black (90)

## Sea-Doo Riding Boots

**444260** 5, 6, 7, 8, 9, 10, 11, 12, 13

Sea-Doo Boots made for performance riding.

- 50% EVA, 40% mesh, 10% lycra.
- Antimicrobial treatment.
- Lightweight EVA midsoles.
- All-around protective urethane coating.
- Mesh uppers and perforated insoles for fast water evacuation.
- Non-slip and non-marking outsoles.
- These amphibian mid-cut boots will allow you to ride hard while protecting your ankles from impacts against the hull.

**UNISEX**



Black (90)

## Sea-Doo Neoprene Shoes

**444261** 5, 6, 7, 8, 9, 10, 11, 12, 13

3 mm Neoprene shoes.

- 90% neoprene, 10% nylon.
- Double-glued and blind stitched neoprene construction.
- Flexible rubber toe and heel protection caps.
- Molded outsole with non-slip tread design.
- Anti-slip insole.

### FOOTWEAR (MEASURE FOOT LENGTH)

#### Sea-Doo Riding Boots and Water Shoes

US Men's Size	5	6	7	8	9	10	11	12	13
US Women's Size	6	7	8	9	10	11	12	13	14
EU Sizes	36½	37½	39	40	41½	42½	44	45½	46½
Sizing Code*	24	25	27	28	29	30	31	32	33
Foot Length from Heel to Toe (in.)	9	9.2	9.6	10.0	10.4	10.6	11.0	11.2	11.6
Foot Length from Heel to Toe (cm)	23.0	23.5	24.5	25.5	26.5	27.0	28.0	28.5	29.5

#### Sea-Doo Neoprene Boots and Neoprene Shoes

US Men's Size	5	6	7	8	9	10	11	12	13
US Women's Size	6	7	8	9	10	11	12	13	14
EU Sizes	36	37-38	39	40-41	42	43-44	45	46-47	48
Sizing Code*	24	25	27	28	29	30	31	32	33
Foot Length from Heel to Toe (in.)	8.8	9.2	9.6	10.0	10.4	10.8	11.2	11.6	12
Foot Length from Heel to Toe (cm)	22.5	23.5	24.5	25.5	26.5	27.5	28.5	29.5	30.5

#### Sea-Doo Aqua Shoes

US Men's Size	5	6	7	8	9	10	11	12	13
US Women's Size	6	7	8	9	10	11	12	13	14
EU Sizes	36½	37½	39	40	41½	42½	44	45½	46½
Sizing Code*	24	25	27	28	29	30	31	32	33
Foot Length from Heel to Toe (in.)	9.1	9.3	9.6	10.0	10.4	10.6	11.0	11.4	11.6
Foot Length from Heel to Toe (cm)	23.0	23.5	24.5	25.5	26.5	27.0	28.0	28.5	29.5

\*Use "Sizing Code" to complete the part number on your order.





# Floatable Collection

All our sunglasses. No more panic after you drop them in the water – they'll stay at the top where you can see them!



Blue (80), Gold (11), Red (30), Silver (08)

## Sea-Doo Low Tide Polarized Floating Sunnies (UV)

**448802** One size

- High-quality polarized colored chrome lenses.
- Floating frame technology.
- UV400 protection.
- Air-injected arms for floatability and light weight.
- Removable and adjustable safety strap system.
- 90% plastic, 10% neoprene.



Red (30), Silver (08)

## Sea-Doo Wave Polarized Floating Sunnies (UV)

**448717** One size

- Polarized colored chrome lenses.
- Floating frame technology.
- UV400 protection.
- Air-injected arms for floatability and light weight.
- Adjustable safety strap system.
- 90% plastic, 10% neoprene.



Blue (80), Gold (11), Red (30), Silver (08)

## Sea-Doo High Tide Polarized Floating Sunnies (UV)

**448803** One size

- High-quality polarized colored chrome lenses with overmolded lower frame.
- Floating frame technology.
- UV400 protection.
- Air-injected arms for floatability and light weight.
- Removable and adjustable safety strap system.
- 90% plastic, 10% neoprene.



Green (70), Orange (12), Silver (08)

## Sea-Doo Riding Goggles (UV)

**448623** One size

- Featuring anti-fog technology with colored chrome lenses.
- Indirect ventilation frame.
- Adjustable strap system.
- Goggles-to-PFD attachment safety cord.
- Optional Riding Goggles RX Insert (448624) (sold separately).
- 90% plastic, 10% neoprene.



Blue (80), Gold (11), Green (70), Indigo Blue (82)

## Sea-Doo Sand Polarized Floating Sunnies (UV)

**448746** One size

- Polarized colored chrome lenses.
- Floating frame technology.
- UV400 protection.
- Air-injected arms for floatability and light weight.
- Removable and adjustable safety strap system.
- 90% plastic, 10% neoprene.



Blue (80), Pink (36)

## Sea-Doo Lagoon Polarized Floating Sunnies (UV)

**448747** One size

- Polarized colored chrome lenses.
- Floating frame technology.
- UV400 protection.
- Air-injected arms for floatability and light weight.
- Removable and adjustable safety strap system.
- 90% plastic, 10% neoprene.

# Riding Gear

## UNISEX



Clear (00)

### Riding Goggles RX Insert

**448624** One size

- Designed for the Sea-Doo Riding Goggles (448623).
- Go to your optics store and most will be able to fit prescription lenses tailored to your needs.
- 100% plastic.



Black (90)

### Sea-Doo Chippy Gloves

**446332** XS, S, M, L, XL, 2XL, 3XL

Chippy Gloves perfect for Sea-Doo riding.

- Nylon material.
- Gloves with stretch fabric for ease of movement.
- Double stitching in high stress areas for durability.
- Clarino® Nash palm material with 2 mm padding and rubberized Pro-Grip at palm to ensure a solid hold.
- Stretch neoprene cuffs.
- Pre-shaped fingers.
- Lycra gussets at finger knuckles to maximize ergonomics.
- Wrist puller with silicone print.

## UNISEX



Black (90)

### Sea-Doo Chippy Shorty Gloves

**446333** XS, S, M, L, XL, 2XL, 3XL

Chippy Shorty Gloves perfect for Sea-Doo riding.

- Nylon material.
- Gloves with stretch fabric for ease of movement.
- Double stitching in high stress areas for durability.
- Clarino® Nash palm material with 2 mm padding and rubberized Pro-Grip at palm to ensure a solid hold.
- Stretch neoprene cuffs.
- Lycra gussets at finger knuckles to maximize ergonomics.
- Wrist puller with silicone print.

## UNISEX



Black (90)

### Neoprene Gloves

**286729** XS, S, M, L, XL, 2XL

1.5 mm Neoprene Gloves for cold weather.

- Content: 90% neoprene, 10% nylon.
- UV protection.
- Super stretch material for superior comfort and mobility.
- Anti-slip rubberized print at palms.
- Pre-shaped fingers.

#### GLOVES (MEASURE PALM WIDTH)

Sizes	XS	S	M	L	XL	2XL	3XL
Sizing Code*	02	04	06	09	12	14	16
Palm (in.)	3	3¼	3½	4	4½	5	5½

\*Codes to complete the part number on your order.





# Family Fun

Kid's Sea-Doo  
Quick Dry Poncho  
by Slowtide  
288061\_76



Junior Freedom PFD  
(US/CA)  
287030\_90



Youth Live The  
Sea-Doo Life T-Shirt  
288373\_01



Sea-Doo Quick Dry  
Towel by Slowtide  
288062\_26



Youth Palm  
Curved Cap  
288217\_89



Sea-Doo Junior Freedom PFD  
(US/CA)  
285972\_90



Sea-Doo  
Kneeboard  
51.5 in./131 cm  
B107510076

Sea-Doo  
Wakeboard  
55 in./140 cm  
B107520076





# Play & Licensing Products

## UNISEX



Mixed Color (18)

### Pack of 2 Junior Swim Goggles, perfect for their everyday swim

**B10795** One size

Paquet de 2 lunettes de natation junior, parfaite pour leur baignade quotidienne.

- UV protection.
- Anti-Fog Treatment.
- Watertight Goggles.
- Silicon Eye Cup and Headband.
- Adjustable Strap.

## UNISEX



Black (90)

### Sea-Doo Adult Swim Goggles

**B10796** One size

Adult Swim Goggles, perfect for every swim.

- UV protection.
- Anti-Fog Treatment.
- Watertight goggles.
- Silicon Eye Cup and Headband.
- Adjustable Strap.

## UNISEX



Blue (80)

### Sea-Doo Junior Swim Mask

**B10797** One size

Junior Swim Mask, perfect for any underwater adventures.

- Clear lenses for optimal visibility in pools.
- Watertight PVC Skirt.
- Quick-release PVC Strap for adjustment

## UNISEX



Blue (80)

### Sea-Doo Adult Swim Mask

**B10798** One size

Adult Swim Mask, perfect for any underwater adventures.

- UV Protection.
- Anti-Fog Treatment.
- Clear lenses for optimal visibility in pools.
- Watertight PVC Skirt.
- Quick-release PVC Strap for adjustment.

## UNISEX



Black (90)

### Sea-Doo Adult Mask, Snorkel and Fins Set

**B10799** One size

Complete Snorkel Set ideal for all levels of underwater explorers. Includes Mask, Snorkel and Fins.

- Mask with clear lenses, anti-fog treatment, watertight silicon skirt, and adjustable strap.
- Snorkel with splash guard, silicone mouthpiece, flexible tube, purge valve, and mask attachment.
- Lightweight Fins with adjustable strap and waterdrain system.

## UNISEX



Blue (80)

### Sea-Doo Junior Mask, Snorkel and Fins Set

**B10800** One size

Junior Snorkel Set ideal for young underwater explorers. Includes Mask, Snorkel and Fins.

- Mask with clear lenses, watertight silicon skirt, and adjustable strap.
- Snorkel with splash guard, silicone mouthpiece, flexible tube, purge valve, and mask attachment.
- Lightweight Fins with adjustable strap and waterdrain system.

## UNISEX



Turquoise (Aqua) (76)

### Sea-Doo Adult Swim Mask and Snorkel Combo

**B10801** One size

Swim Mask & Snorkel Combo, ideal for beginners and casual snorkelers.

- Mask with clear single lens and anti-fog treatment, watertight PVC skirt, and quick-adjust strap with push-lever buckle.
- Snorkel with dry top, PVC mouthpiece, flexible tube, purge valve, and quick-release clip.

## UNISEX



Blue (80)

### Sea-Doo Junior Swim Mask and Snorkel Combo

**B10802** One size

Swim Mask & Snorkel Combo, ideal for young beginners in snorkeling.

- Mask with clear single lens, UV protection, anti-fog treatment, and watertight PVC skirt.
- Snorkel with splash guard and PVC mouthpiece.

UNISEX



Turquoise (Aqua) (76)

Sea-Doo Kneeboard 51.5 in./131 cm

**B10751** One size

The Sea-Doo Kneeboard is perfect for teaching kids. It provides unrivaled stability, building confidence and ensuring comfort on the water.

- Unleash your knee surfing skills with our versatile kneeboard, perfect for lake, beach, and river adventures.
- Upgrade to our lightweight kneeboard, weighing under 9 lb for effortless transportation in your vehicle or boat box.
- Stay secure with the adjustable strap on each Sea-Doo kneeboard, ensuring a safe and enjoyable water experience.
- Measuring 50" long and 20" wide, our kneeboard accommodates older children, teens, and adults, making it perfect for sharing.
- Crafted from corrosion-proof marine-grade materials, our kneeboard withstands the elements and suits beginners and pros alike.



Turquoise (Aqua) (76)

Sea-Doo Wakeboard 55 in./140 cm

**B10752** One size

Dive into the world of wakeboarding with the Sea-Doo board! It's perfect for beginners and a must-have for any boat adventure. Thanks to its buoyant foam core, you'll experience effortless starts and smooth rides from the get-go. As you progress, enjoy the board's predictability and user-friendly nature.

- Sea-Doo Wakeboard 55 inches.
- Constructed with a high-density PU foam core, providing stability and resilience. The deck and bottom are made of PBT and epoxy fiberglass layers, ensuring strength and durability. Perfect for reliable and long-lasting performance.
- Size: Length 55" x Width 16.9" x Thickness 1".
- This product comes with open-toe bindings, allowing for easy entry and exit while providing a comfortable fit for a variety of foot sizes.
- The dual-zone lacing system, equipped with hex locks, offers a customizable and secure fit.
- The impact EVA footbed provides excellent cushioning, shock absorption and reduced fatigue during long rides.
- US sizes 8-12.

UNISEX



Clear (00)

Sea-Doo Triangle Tube - 1-Per.

**B10667** One size

The Sea-Doo One-Person Triangle Tube (122 cm x 127 cm) is versatile for all ages and rider levels. For relaxed fun, ride seated in the middle with your feet dangling over the side. For a more thrilling ride, lay on the tube and hang on—this model is a great option for performing tricks. Also, one-person tubes are perfect for towing behind a three-passenger watercraft. All Sea-Doo tubes are made with heavy-duty nylon covers and robust PVC air chambers, and outfitted with quick-connect tow hooks.

- Sea-Doo One-Person Triangle Tube.
- Designed for one person.
- Sit-in position 24-gauge robust PVC bladder with 420-denier partial heavy-duty nylon cover.
- Double webbing foam handles with knuckle guards to avoid chafing.
- Self-bailing drain vents.
- Reinforced tow system.
- Quick-connect tow hook.
- Padded valve cover.
- Puncture repair kit.
- Boston valve for bladder and normal air valve in floor.
- Diameter: 124 cm x 128 cm when inflated.



## UNISEX



Clear (00)

**2 Way Sit In Tube - 3-Per. (2021)****B10710** One size

The Sea-Doo Three-Person Two-Way Sit-in Tube has all the same attributes as its two-person counterpart, plus room for one more passenger. A cockpit-style tube ideal for more timid riders who just want a stable, relaxing ride. A chafe-free neoprene seating area that is comfortable and dry, while the tube's low center of gravity makes it less susceptible to wakes and waves tipping it over. Also, thanks to its dual tow points, it offers two different styles of riding: pulled from the front for a comfortable ride while seated against the backrest, or towed backwards for a more thrilling chariot-style ride while sitting on your knees. And whichever way you ride, the soft foam handles equipped with knuckle guards provide a welcome added touch. All Sea-Doo tubes are made with heavy-duty nylon covers and robust PVC air chambers, and outfitted with quick-connect tow hooks.

- Sea-Doo Three-Person Two-Way Sit-in Tube.
- Designed for three riders.
- Multiple sit-in riding positions, sitting with their back against the backrest or on their knees.
- Can be pulled from the front or the rear depending on the choice of your riding position.
- 26-gauge robust PVC bladder with 840/420-denier heavy-duty full nylon cover.
- 4 self-bailing drain vents Includes soft foam area for sitting and foam knuckle-protection pads to avoid chafing.
- Tow system reinforced with 840-denier nylon.
- Quick-connect tow hook.
- Padded valve cover.
- Puncture repair kit.
- 2 Boston valves and one normal air valve in floor.
- Dimensions: 70" x 87" (177 cm x 220 cm) when inflated.

## UNISEX



Clear (00)

**Deck Tube - 2-Per. (2021)****B10711** One size

The Sea-Doo Two-Person Deck Tube is great for riders seeking a wild, dynamic ride. The flat surface and low profile make it great for riding lying on your belly, face close to the water, to fully experience the speed of the ride. The neoprene passenger area will provide you with chafe-free comfort. And while you're holding on tight, you'll be glad for the grip of the soft foam handles equipped with knuckle guards. All Sea-Doo tubes are made with heavy-duty nylon covers and robust PVC air chambers, and outfitted with quick-connect tow hooks.

- Sea-Doo Two-Person Deck Tube.
- Designed for up to two riders and to ride lying down.
- 26-gauge robust PVC bladder with 420-denier heavy-duty full nylon cover.
- Double webbing soft foam handles with knuckle guards to prevent chafing.
- Comfortable foam pad.
- 1 self-bailing drain vent.
- Reinforced tow system.
- Quick-connect tow hook.
- Padded valve cover.
- Puncture repair kit.
- Boston valve.
- Dimensions: 69" x 72" (175 cm x 182 cm) when inflated.

## UNISEX



Clear (00)

**Sit on Top Tube - 3-Per. (2021)****B10712** One size

The Sea-Doo Three-Person Sit-on-Top Tube is a roomy towable loaded with features like a comfy backrest, a chafe-free neoprene sitting area, and knuckle-guard-equipped soft foam handles for a truly comfortable ride. Always up for any kind of water adventure, from tranquil rides that free the mind to thrilling experiences you won't soon forget, this versatile tube accommodates three passengers for triple the water fun. All Sea-Doo tubes are made with heavy-duty nylon covers and robust PVC air chambers, and outfitted with quick-connect tow hooks.

- Sea-Doo Three-Person Sit-on-Top Tube.
- Designed for up to three passengers sitting with their back against the backrest.
- 26-gauge robust PVC bladder with 840/420-denier heavy-duty full nylon cover.
- Self-bailing drain vent.
- Includes soft foam area for sitting and foam knuckle-protection pads to avoid chafing.
- 4-point tow system reinforced with 840-denier nylon.
- Quick-connect tow hook.
- Padded valve cover.
- Puncture repair kit.
- 2 Boston valves and one normal air valve in floor.
- Dimensions: 79" x 88" (200 cm x 223 cm) when inflated.





Clear (00)

### 60 ft Towable Tube Cord 4,100 lb

**B10477** One size

This Sea-Doo rope for 2 to 4 passenger towable tubes is designed for exhilaratingly exciting tubing adventures. 18.3 m long to allow the tube to pull cleanly over the wake of your boat. A tensile strength capable of handling loads of up to 1860 kg for pulling up to four people, and also perform turns and swings.

- Sea-Doo Towable Tube Rope for 2- to 4-person tube.
- 18.3 m rope for 2- to 4-passenger towable tube.
- Resists a 1860 kg tensile strength.
- Solution-dyed and sun-resistant polyethylene to protect against UV rays.
- Loops on both ends.
- Conveniently stores in webbing handily equipped with eyelet to hang on wall.



Clear (00)

### 60 ft Towable Tube Cord 1,500 lb

**B10486** One size

This Sea-Doo rope for one-person towable tubes will deliver hours of exhilaratingly exciting tubing adventures. The 18.3 m length allows the tube to pull cleanly over the wake of your boat. And with a tensile strength of 680 kg, it's perfect for handling turns and swings.

- Sea-Doo Towable Tube Rope for 1-Person Tube.
- 18.3 m for 1-passenger tube.
- 680 kg tensile strength.
- Solution-dyed and sun-resistant polyethylene to protect against UV rays.
- Loops on both ends.
- Conveniently stores in webbing handily equipped with eyelet to hang on wall.



# Replacements Parts



Yellow (10)

## RPM Paddle for Inflatable Paddle Board (Yellow)

**B10736** One size

Replacement paddle for Sea-Doo Inflatable Stand-up Paddle Board.

- Paddle for Sea-Doo Inflatable Stand-up Paddle Board.
- Adjustable 3-piece paddle.
- Adjustment markers make it easy to remember your favorite settings.
- Toolless assembly and torquing.



Blue (80)

## RPM Paddle for Inflatable Paddle Board (Blue)

**B10737** One size

Replacement paddle for Sea-Doo Inflatable Stand-up Paddle Board.

- Paddle for Sea-Doo Inflatable Stand-up Paddle Board.
- Adjustable 3-piece paddle.
- Adjustment markers make it easy to remember your favorite settings.
- Toolless assembly and torquing.



Black (90)

## RPM Leash for Inflatable Paddle Board

**B10734** One size

Replacement Ankle Leash for Sea-Doo Inflatable Paddle Boards.

- Comfortable neoprene ankle cuff with 'Velcro' closure.
- Easy to use with pull tab.
- Coil cable and stainless-steel swivel.
- Fits Sea-Doo Paddle Boards (B106660000, B104570000, B107240000).



Black (90)

## RPM Fin for Inflatable Paddle Board

**B10735** One size

Replacement fin for Sea-Doo Inflatable Paddle Boards.

- Replacement fin for Sea-Doo Inflatable Paddle Boards.
- Slide in and lock.
- Locking tool included.
- Fits Sea-Doo Paddle Boards (B106660000, B104570000, B107240000).



Black (90)

## RPM Pump for Inflatable Paddle Board

**B10738** One size

Replacement manual pump to inflate Sea-Doo Paddle Boards (B106660000, B104570000, B107240000).

- Manual pump to inflate Sea-Doo paddle boards.
- Includes gauge for inflating to specified PSI/BAR.
- Fits Sea-Doo Paddle Boards (B106660000, B104570000, B107240000).



Grey (09)

## RPM Backpack with wheels for Inflatable Paddle Board

**B10739** One size

Replacement backpack with wheels to carry Sea-Doo Inflatable Paddle Boards (B106660000, B104570000, B107240000).

- Backpack with wheels for ease of transportation and storage of Sea-Doo Inflatable Paddle Boards.
- Can carry deflated board, 3-piece paddle and pump.
- Fits Sea-Doo Paddle Boards (B106660000, B104570000, B107240000).



Grey (09)

### RPM Valve & Wrench for Inflatable Paddle Board

**B10740** One size

Replacement valve and wrench for Sea-Doo Inflatable Paddle Boards (B106660000, B104570000, B107240000).

- Replacement valve and wrench to correct an inflatable paddle board leaking valve.
- Fits Sea-Doo Paddle Boards (B106660000, B104570000, B107240000).



Black (90)

### RPM Boston Valve for Inflatable Paddle Board

**B10741** One size

Replacement Boston valve for Sea-Doo Inflatable Paddle Boards (B106660000, B104570000, B107240000).

- Replacement Boston valve to correct an inflatable paddle board leaking valve.
- Fits Sea-Doo Paddle Boards (B106660000, B104570000, B107240000).



Charcoal Grey (07)

### Sea-Doo Riding Goggles RPM Strap

**448770** One size

- Replacement strap for the Sea-Doo Riding Goggles.
- 80% fabric, 20% plastic.



Black (90)

### Wave Sunnies RPM Strap

**448775** One size

- Replacement strap for the Sea-Doo Wave sunnies.
- 100% neoprene.



Black (90)

### Sand and Lagoon Sunnies RPM Strap

**448776** One size

- Replacement strap for the Sea-Doo Sand and Lagoon sunnies.
- 80% neoprene, 20% plastic.



Black (90)

### Tide Sunnies RPM Strap

**448822** One size

- Replacement strap for the Sea-Doo Tide sunnies.
- 80% neoprene, 20% plastic.

Always use the digital version of the Product Spec Book for the most updated information.



## Notes

## Notes



# BRP reimagines the way you access your world

Sea-Doo is one of many success stories from BRP, the global company behind some of the most daringly innovative products and experiences that move you. Because it's not about the destination, it's about the journey – yours.

Discover our brands:

***ski-doo*** ***LYNX*** ***SEA-DOO*** ***CAN-AM*** ***ROTAX***

[www.brp.com](http://www.brp.com)





SEA-DOO.COM



MY26 297002660

A BRP BRAND

