



2025 SPORT FISHING

# FISHPRO™ SPORT 170

Find yourself a new perspective on sportfishing with the stable, versatile vehicle that started it all.

## KEY FEATURES

- Rotax® 1630 ACE™ - 170
- ST3™ Hull
- iDF - Intelligent Debris-Free Pump System
- GARMIN† 7" GPS & Fish Finder
- 5 fishing rod holders
- Rear Deck Extension with LinQ™
- LinQ™ fishing cooler 51 L
- Angled gunwale footrests
- Direct access front storage with bin organizer



White & Gulfstream Blue

iDF/iTC/iBR/ST3/CLCS/ECO

## CAPACITY

Rider capacity	○○○
Weight capacity	272 kg
Rear Platform Capacity (Swim & Rear Deck Extension Capacity (without passenger))	100 kg
Fuel capacity	70 L
Glove box	2.9 L
Front bin	96 L
LinQ™ fishing cooler	51 L
Storage capacity - Total	149.9 L*

\*Total storage capacity includes LinQ fishing cooler

## DIMENSIONS

Length (bumper to bumper)	373 cm
Width	126 cm
Height	115 cm

## HULL

Type	ST3™ Hull
Material	Fiberglass

## OTHER FEATURES

Ergolock™ two-piece fishing seat	Handle Grips with palm rest
Seat strap	Footwell carpets
iBR® - Intelligent Brake & Reverse	Large swim platform
VTS™ (Variable Trim System)	2 LinQ™ front supports
Boarding ladder	Cupholder
RF D.E.S.S.™ key	USB port
Watertight phone compartment	Tilt steering
Wide-angle mirrors	Ski tow eye

## ROTAX ENGINE

1630 ACE™ - 170

Intake system	Naturally aspirated
Displacement	1,630 cc
Cooling	Closed-Loop Cooling System (CLCS)
Reverse system	Electronic iBR**
Starter	Electric
Fuel type	95 octane
Throttle system	iTC™ (Intelligent Throttle Control)
Exhaust System	D-Sea-Bel™ system

## GAUGE

Type of gauge	7.6" wide digital display	
Main functions	Speedometer	Fuel autonomy
	RPM	Water temperature
	Clock	Vehicle hours
	VTS™	
iTC System - mode	Sport mode	Trolling mode (slow mode)
	ECO® mode	Accessory Mode
	Speed regulator	

## WEIGHT

Dry weight (oil, coolant, no fuel)	386 kg
Power to weight ratio (HP / lbs)	0.2

## WARRANTY

BRP limited warranty covers the watercraft for two years.

\*\*Electronic brake, neutral and reverse.  
†Garmin is a trademark of Garmin Ltd. or its subsidiaries.





## FEATURE HIGHLIGHTS



### iDF - Intelligent Debris Free system

An innovative, industry-first system that allows you to free your pump of weeds and debris with intuitive handlebar-activated controls.



### GARMIN 7" GPS & Fish Finder

A top-of-the-line navigation, charting and fish-finding system using an in-hull transducer and mid-CHIRP sonar. Includes token for access to free upgraded regional maps.



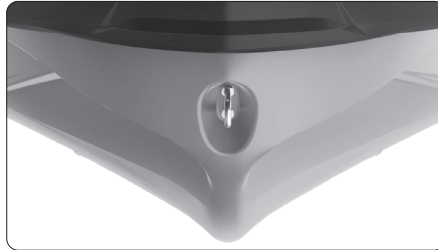
### Angled Gunwale Footrests

Ensures ergonomic and secure posture while fishing from a side position.



### ROTAX® 1630 ACE™ - 170 ENGINE

The Rotax® 1630 ACE™ - 125kW (170) combines plenty of naturally aspirated power and economy, meaning the adventure can be exhilarating and prolonged.



### ST3™ Hull

An innovative hull that sets the benchmark for rough water handling, stability, and offshore performance.<sup>4</sup>



### Rear Deck Extension with LinQ attachment system

Adds 29 cm to the back of the watercraft to increase stability, space, and storage capability.

©2024 Bombardier Recreational Products Inc., (BRP). All rights reserved. ®, TM and the BRP logo are trademarks of Bombardier Recreational Products Inc. or its affiliates. All product comparisons, industry and market claims refer to new sit-down PWC with 4-stroke engines. Watercraft performance may vary depending on, among other things, general conditions, ambient temperature, altitude, riding ability and rider/passenger weight. Testing of competitive models done under identical conditions. Because of our ongoing commitment to product quality and innovation, BRP reserves the right at any time to discontinue or change specifications, price, design, features, models, or equipment without incurring any obligation. †Garmin is a trademark of Garmin Ltd. or its subsidiaries.