



2025 ADVENTURE

# EXPLORER PRO® 230

The ultimate companion for any adventure

## WHAT'S NEW

- Hydraulic Steering Damper

## KEY FEATURES

- Rotax® 1630 ACE™ - 230
- ST3™ Hull
- Tech Package: BRP Audio - premium system & Full color 7.8" wide display, USB port
- iDF - Intelligent Debris-Free Pump System
- GARMIN† 7" touchscreen GPS & Fish Finder
- Touring Windshield
- Heavy-Duty Grab Handles
- Adjustable handlebar riser
- Explorer Touring seat and knee pads
- Gunwale footrests
- LinQ™ Multi Cargo Rack
- LinQ™ Explorer Bag
- Rear Deck Extension



● Iceland Grey

iDF/iTC/iBR/ST3/CLCS/ECO

## CAPACITY

Rider capacity	○○○
Weight capacity	272 kg
Rear Platform Capacity (Swim & Rear Deck Extension Capacity (without passenger))	100 kg
Fuel capacity	70 L
Glove box	2.9 L
Front bin	96 L
LinQ™ explorer bag	100 L
Storage capacity - Total	198.9 L*

\*Total storage capacity includes LinQ™ Explorer bag

## DIMENSIONS

Length (bumper to bumper)	373.4 cm
Width	126 cm
Height	140 cm

## HULL

Type	ST3™ Hull
Material	Fiberglass

## OTHER FEATURES

- Seat strap
- iBR® - Intelligent Brake & Reverse
- VTS™ (Variable Trim System)
- Boarding ladder
- RF D.E.S.S.™ key
- Direct-access front storage
- Watertight phone compartment
- LinQ™ attachment system
- Wide angle mirrors
- Handle Grips with palm rest
- Footwell carpets
- Large swim platform
- 1 LinQ™ front support
- Cupholder
- Handlebar with adjustable riser
- Tilt steering
- Ski tow eye

## ROTAX ENGINE

	1630 ACE™ - 230
Intake system	Supercharged with external intercooler
Displacement	1,630 cc
Cooling	Closed-Loop Cooling System (CLCS)
Reverse system	Electronic iBR®*
Starter	Electric
Fuel type	95 octane
Throttle system	iTC™ (Intelligent Throttle Control)
Exhaust System	D-Sea-Bel™ system

## GAUGE

Type of gauge	Large panoramic 7.8" wide LCD display	
Main functions	• BRP Connect	• RPM
	• Music	• Clock
	• Navigation	• VTS™
	• Bluetooth† connectivity	• Fuel consumption
	• Speedometer	• Fuel autonomy
iTC System - mode	• Sport mode	• Speed regulator
	• ECO® mode	• Accessory Mode
	• Slow mode	

## WEIGHT

Dry weight (oil, coolant, no fuel)	416 kg
Power to weight ratio (HP / lbs)	0.2

## WARRANTY

BRP limited warranty covers the watercraft for two years.



\*Electronic brake, neutral and reverse.  
 †Bluetooth† is a registered trademark owned by Bluetooth SIG, Inc. and any use of such trademarks by BRP is under license.  
 ‡Garmin is a trademark of Garmin Ltd. or its subsidiaries.

## FEATURE HIGHLIGHTS



### Touring Windshield

An industry-first that reduces noise and fatigue associated with prolonged wind pressure whilst also protecting against splashing and salt water exposure when riding offshore.



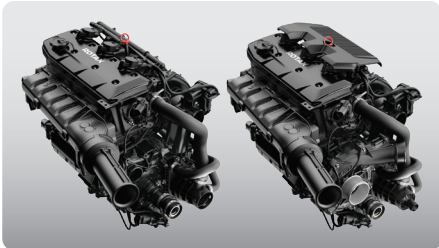
### Extended Riding Comfort

With extended riding duration in mind, the Explorer Touring seat and knee pads, adjustable riser handlebars and gunwale footrests provide ultimate extended riding comfort.



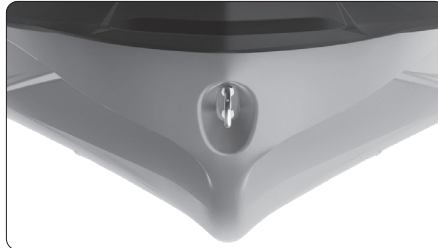
### LinQ™ Explorer Bag

Keep extra gear dry and easily accessible with this 100 L. bag. This exclusive LinQ™ compatible accessory is waterproof, functional and portable. It can be stacked on the LinQ™ plate/ LinQ™ accessories or carried as a backpack.



### ROTAX® 1630 ACE™ - 230

Two engine options: the 125kW (170hp) boasts naturally aspirated punch with optimal fuel economy or opt for the 169.16 kW (230hp) engine with a supercharger and external intercooler, optimized to run on regular fuel.



### ST3™ Hull

An innovative hull that sets the benchmark for rough water handling, stability, and offshore performance.<sup>4</sup>



### Rear Deck Extension with LinQ™ attachment system and Multi Cargo Rack

The rear deck extension adds 29 cm to the back of the watercraft to increase stability, space, and storage capability. Enhance your storage capacity with the LinQ™ Multi Cargo Rack.