



2022 SPORT FISHING

NEW

FISHPRO™ TROPHY 170

The most advanced sport fishing personal watercraft on the water.


KEY FEATURES

- iDF - Intelligent Debris-Free Pump System
- Modular swivel seat
- Advanced battery system
- LinQ® fishing cooler (13.5 US gal/51 L)
- Quick-connect livewell
- Garmin† 7" touchscreen GPS & Fish Finder
- Includes free regional map token
- Anchoring system
- NEW Tech Package: BRP Audio – premium system & full-color 7.8" wide display (optional)



 NEW Shark Grey & Orange Crush

CAPACITY

Rider Capacity	
Weight Capacity	600 lb/272 kg
Fuel Capacity	18.5 US gal/70 L
Glove Box	0.8 US gal/2.9 L
Front Bin	25.3 US gal/96 L
LinQ® Fishing Cooler	13.5 US gal/51 L
Storage Capacity - Total	39.6 US gal/149.9 L

DIMENSIONS

Length (bumper to bumper)	146.8"/373 cm
Width	49.4"/125 cm
Height (pedestal seat uninstalled)	45.3"/115 cm

HULL

Type	ST3 Hull™
Material	Fiberglass

OTHER FEATURES

- Ergolock™ two-piece fishing w/modular swivel seat
- Seat strap
- iBR – Intelligent Brake & Reverse
- VTS™ - Variable Trim System
- Boarding ladder
- RF D.E.S.S.™ key**
- Direct-access front storage
- Storage bin organizer
- Watertight phone compartment
- Two sets of LinQ® attachment points
- Wide-angle mirrors
- Handle grips with palm rest
- Footwell carpets
- Large swim platform with carpet
- 5 fishing rod holders
- Angled gunwale footrests
- Integrated washdown
- Extended rear platform
- 2 LinQ front supports
- Cup holder
- USB port
- Tilt steering
- Ski tow eye

ROTAX® ENGINE

1630 ACE™ - 170

Horsepower	170 HP
Intake System	Naturally aspirated
Displacement	1,630 cc
Cooling	Closed-Loop Cooling System (CLCS)
Reverse System	Electronic iBR**
Fuel Type	87 octane
Throttle System	iTC™ (Intelligent Throttle Control)
Exhaust System	D-Sea-Bel™ system

GAUGE

Type of Gauge	Large panoramic 7.8" wide LCD display (Opt. w/ audio) 7.6" wide digital display (w/o audio)
Main Functions	<ul style="list-style-type: none"> • BRP Connect (opt.) • Music (opt.) • Weather (opt.) • Bluetooth compatible (opt.) • Speedometer • RPM • Clock • VTS™ • Fuel consumption (opt. w/ audio) • Fuel autonomy • Water temperature • Speed statistics (opt. w/ audio) • Vehicle hours
iTC System - Mode	<ul style="list-style-type: none"> • Sport mode • ECO® mode • Trolling Mode (slow mode) • Speed regulator

WEIGHT

Dry Weight	898 lb/407 kg
------------	---------------

WARRANTY

BRP limited warranty covers the watercraft for one year.

**May not be available at the time of purchase. Please check with your dealer.
*Electronic brake, neutral and reverse.



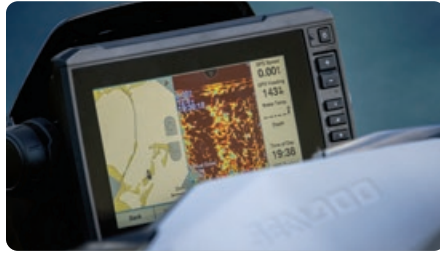


FEATURE HIGHLIGHTS



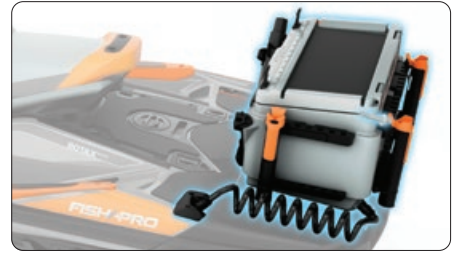
Anchoring System

Allows quick access and easy storage of the anchor. It also keeps your front storage neat by eliminating the need to store a rope and anchor there.



Garmin® 7" Touchscreen GPS & Fish Finder

A large 7" touchscreen top-of-the-line navigation, charting and fish-finding system using an in-hull transducer and mid-CHIRP sonar. Includes token for access to free upgraded regional maps



Quick-Connect Livewell

Turn the LinQ Fishing Cooler into a livewell in seconds. An integrated pump constantly feeds fresh water into the reservoir keeping your catch or your bait alive all day.



Modular Swivel Seat

Brings flexibility to the fisherman to comfortably cast and jig for longer period from a more upright position. Installs and stows in seconds.



Advanced Battery System

With dual batteries and a 650-watt voltage generator, even the most demanding electrical needs are sure to be met.



Full-Color 7.8" Wide Display (Optional)

Full-color display with incredible visibility and a new level of functionality. Bluetooth and smartphone app integration provides music, weather, navigation and more.

©2021 Bombardier Recreational Products Inc., (BRP). All rights reserved. ®, TM and the BRP logo are trademarks of Bombardier Recreational Products Inc. or its affiliates. Products are distributed in the USA by BRP US Inc. All product comparisons, industry and market claims refer to new sit-down PWC with 4-stroke engines. Watercraft performance may vary depending on, among other things, general conditions, ambient temperature, and altitude, riding ability and rider/passenger weight. Testing of competitive models done under identical conditions. Because of our ongoing commitment to product quality and innovation, BRP reserves the right at any time to discontinue or change specifications, price, design, features, models or equipment without incurring any obligation. †Garmin is a trademark of Garmin Ltd. or its subsidiaries. Printed in Canada.

