



2022 PERFORMANCE

# RXT<sup>®</sup>-X<sup>®</sup> 300

The ultimate off-shore performance watercraft.

## KEY FEATURES

- Rotax 1630 ACE – 300 engine
- Ergolock two-piece racing seat
- ST3 hull
- **NEW Tech Package:** BRP Audio – premium system & full-color 7.8" wide display
- Launch control
- Tilt steering
- Full-length angled footwell wedges
- X-sponsons



- NEW **Premium Triple Black**
- Millennium Yellow

## CAPACITY

Rider Capacity	3
Weight Capacity	600 lb/272 kg
Fuel Capacity	18.5 US gal/70 L
Glove Box	0.8 US gal/2.9 L
Front Bin	25.3 US gal/96 L
Storage Capacity - Total	26.1 US gal/98.9 L

## DIMENSIONS

Length (bumper to bumper)	135.9"/345.1 cm
Width	49.4"/125.5 cm
Height	45.2"/114.7 cm

## HULL

Type	ST3 Hull™
Material	Fiberglass

## OTHER FEATURES

- Seat strap
- iBR – Intelligent Brake & Reverse
- Extended VTS™ (Variable Trim System)
- RF D.E.S.S.™ key\*\*
- Watertight phone compartment
- LinQ® attachment system
- Knee pads
- Wide-angle mirrors
- Handle grips with palm rest
- Footwell carpets
- Large swim platform with carpet
- Ski tow eye

## ROTAX® ENGINE

1630 ACE™ - 300

Horsepower	300 hp
Intake System	Supercharged with external intercooler
Displacement	1,630 cc
Cooling	Closed-Loop Cooling System (CLCS)
Reverse System	Electronic iBR**
Fuel Type	91 octane
Throttle System	iTC™ (Intelligent Throttle Control)
Exhaust System	D-Sea-Bel™ system

## GAUGE

Type of Gauge	Large panoramic 7.8" wide LCD display optional	
Main Functions	<ul style="list-style-type: none"> <li>• BRP Connect</li> <li>• Music</li> <li>• Weather</li> <li>• Bluetooth connectivity</li> <li>• Speedometer</li> <li>• RPM</li> </ul>	<ul style="list-style-type: none"> <li>• Clock</li> <li>• VTS™</li> <li>• Fuel consumption</li> <li>• Fuel autonomy</li> <li>• Speed statistics</li> <li>• Vehicle hours</li> </ul>
iTC System - Mode	<ul style="list-style-type: none"> <li>• Sport mode</li> <li>• ECO® mode</li> <li>• Slow mode</li> </ul>	<ul style="list-style-type: none"> <li>• Speed regulator</li> <li>• Launch control</li> </ul>

## WEIGHT

Dry Weight	829 lb/376 kg
------------	---------------

## WARRANTY

BRP limited warranty covers the watercraft for one year.



\*Electronic brake, neutral and reverse.  
 \*\*May not be available at the time of purchase. Please check with your dealer.  
 †Bluetooth is a registered trademark owned by Bluetooth SIG, Inc. and any use of such trademarks by BRP is under license.



● Millennium Yellow

## FEATURE HIGHLIGHTS



### Ergolock™ System

A narrow seat profile with deep knee pockets lets riders sit naturally and use the lower body to hold onto the machine for more control.



### BRP Audio - Premium System

The industry's first manufacturer-installed truly waterproof Bluetooth<sup>†</sup> audio system.<sup>3</sup>



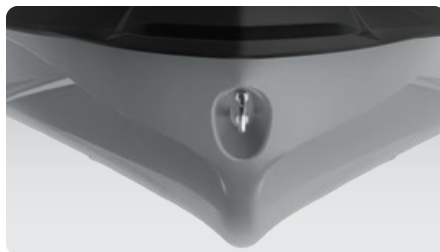
### Full-Color 7.8" Wide Display

Full-color display with incredible visibility and a new level of functionality. Bluetooth and smartphone app integration provides music, weather, navigation and more.



### ROTAX® 1630 ACE™ - 300 Engine

The Rotax 1630 ACE - 300 is the most powerful Rotax engine ever, delivering high efficiency and best-in-class acceleration.



### ST3 Hull™

An innovative hull that sets the benchmark for rough water handling, stability, and offshore performance.



### Direct-Access Front Storage

Large front storage area that's easily accessible from a seated position.<sup>1</sup>

<sup>1</sup> Bin organizers are not included.