

# 2026 PRODUCT SPEC BOOK

PWC accessories



# SEA-DOO®



# PWC Accessories

Essential Bundles	4
Covers	6
LinQ Cooler Guide	8
LinQ, Storage & Bags	10
Watersport Accessories	17
Step & Ladders	18
Steering Controls	19
Platinum Audio System Kit	20
Audio	21
Touchscreen Garmin GPS	22
Electronics & Electrical	23
Body Accessories	26
Docking & Beaching	28
Riding Essentials	30





# Essential Bundles



PEAK	ADVANCED	STARTER	SKU	NAME	PAGE	295100330	Safety Equipment Kit	p. 30	295100570	Registration Kit - Black	p. 30	295101014	Cover	p. 6				SKU	NAME	PAGE	278003401	RF Programmable D.E.S.S.™ Key	p. 24	295100418	Snap-in Fenders	p. 28	295100944	Snap-in Fenders Installation Kit	p. 28	295100750	Folding Anchor	p. 29	295100851	Dock Tie	p. 29	295100901	All-Climate Storage Cover	p. 7				SKU	NAME	PAGE	295100814	Removable Storage Bin Organizer	p. 16	295101257	LinQ 5.3 US gal (20 L) Cooler	p. 10	269502121	Dry Bag 2.6 US gal (10 L)	p. 16	295100862	Lid Organizer	p. 17
SKU	NAME	PAGE																																																						
295100330	Safety Equipment Kit	p. 30																																																						
295100570	Registration Kit - Black	p. 30																																																						
295101014	Cover	p. 6																																																						
SKU	NAME	PAGE																																																						
278003401	RF Programmable D.E.S.S.™ Key	p. 24																																																						
295100418	Snap-in Fenders	p. 28																																																						
295100944	Snap-in Fenders Installation Kit	p. 28																																																						
295100750	Folding Anchor	p. 29																																																						
295100851	Dock Tie	p. 29																																																						
295100901	All-Climate Storage Cover	p. 7																																																						
SKU	NAME	PAGE																																																						
295100814	Removable Storage Bin Organizer	p. 16																																																						
295101257	LinQ 5.3 US gal (20 L) Cooler	p. 10																																																						
269502121	Dry Bag 2.6 US gal (10 L)	p. 16																																																						
295100862	Lid Organizer	p. 17																																																						

Note that the price does not include installation requirements and that part numbers may vary depending on vehicle model.

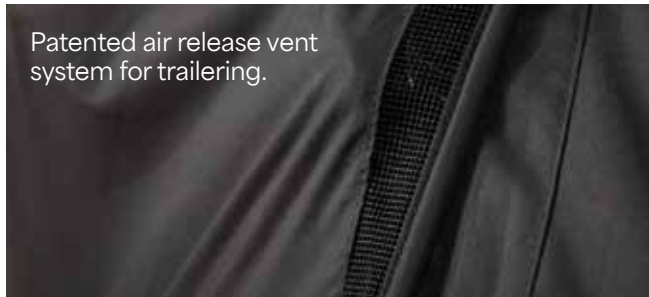




# Covers

## Key Features

- Weather-resistant trailering cover protects your watercraft during storage and trailering.
- Made of heavy-duty UV-resistant solution-dyed polyester canvas.
- Soft inner lining prevents panel abrasion.
- Areas prone to higher wear are reinforced with a layer of double canvas.
- A perfect fit for your watercraft, with or without installed Sea-Doo accessories.
- Standard on GTX Limited models.



MODEL		1	2	3.1	3.2	3.3	4	5	6	7	8	9	COLOURS	SKU
Explorer Pro	Explorer Pro	•	•	•	•	•	•	•	•	•	•	•	Black	295101032
GTX, RXT models with suspension	GTX S, GTX Limited S (2012-2017)	•	•					•	•	•	•		Black/ Light Grey	295100718
	RXT iS, GTX iS, GTX Limited iS (2009-2016)	•	•					•	•	•	•			280000460
	RXT-X aS (2011-2016)	•	•					•	•	•				280000586
GTX, RXT, Wake Pro, FishPro models without suspension	RXT, RXT-X, GTX, Wake Pro (2018 and up)	•	•	•	•	•	•	•	•	•	•	•	Black	295101014
	NEW RXT, RXT-X, GTX, Wake Pro (2018 and up) with Touring Windshield	•	•	•	•	•	•	•	•	•	•	•	Black	295101348
	GTX S, GTX Limited, RXT, RXT-X (2010-2017)	•	•					•	•	•	•		Black/ Light Grey	295100719
	Wake Pro (2010-2017)	•	•					•	•	•	•		Black	295100720
	FishPro Sport, FishPro Trophy	•	•	•	•	•	•	•	•	•		•	Black	295100925
RXP-X, GTR-X models	RXP-X (2012-2020)	•	•					•	•	•	•		Black/ Light Grey	295100721
	GTR-X (2017-2019)	•	•					•	•	•	•			295100721
	RXP-X (2021 and up)	•	•		•	•	•	•	•	•	•	•		295100889
GTS, GTI, GTR, GTR-X, Wake models, FishPro Scout	GTS, GTS Rental, GTI, GTI SE, GTI Limited (2011-2019)	•	•					•	•	•	•		Black/ Light Grey	295100722
	GTR (2012-2019)	•	•					•	•	•	•			295100723
	Wake (2011-2019)	•	•					•	•	•	•		Black	295100724
	GTI, GTI SE, GTR, GTR-X, Wake 170 (2020 and up) / FishPro Scout	•	•		•	•	•	•	•	•	•	•	Black	295100928
Spark models	Spark for 2 (2014-2023)	•	•	•			•	•	•	•	•	•	Black	295100912
	Spark for 3 (2014-2023)	•	•	•			•	•	•	•	•	•		295100789
	Spark for 1 and for 2 (2024 and up)	•	•	•			•	•	•	•	•	•		295101160
	Spark for 3 (2024 and up)	•	•	•			•	•	•	•	•	•		295101161

Note: For prior model years, ask your dealer for details.





295101032



295101348



295101014



295101229



295100889



295100928



295101161



295101160



### All-Climate Storage Cover

GTX, RXT-X, Wake Pro (2019 and up) / GTI, GTR, GTR-X, Wake (2020 and up) / RXP-X (2021 and up) / All FishPro models (2019 and up, except FishPro Apex)

**295100901**

Spark for 1, Spark for 2, Spark for 3

**295100905**

- Protects watercraft surfaces from elements, dust, dirt, sun fading and more during storage.
- 100% waterproof plastic extrusion construction.
- Fused seams prevent leaking during rain or snow.
- Air vents allow circulation and prevent moisture build-up.
- Soft inner lining protects watercraft from abrasion.
- Specifically designed for the perfect fit for easy installation and removal.
- Ideal replacement for shrink wrap storage for an eco-friendly solution.
- \*Not for use during trailering.





# LinQ Cooler Guide

## Add some thrills with LinQ

Having fun on the water has never been easier with LinQ. Take everything you need with you to spend a perfect day on the water with a wide range of Sea-Doo LinQ accessories. Find the storage box, bag, rack or cooler to fit your needs and make your watercraft unstoppable!







LATICOO

ROTAX POWER

SEA-DOO LIMITED

# LinQ, Storage & Bags



## LinQ 5.3 US gal (20 L) Semi-Rigid Cooler

Models with LinQ Base Kit  
**295101252**

- 5.3 US gal (20 L) of insulated, water-resistant capacity.
- Quick, easy and secure LinQ system installation.
- Attaches with one set of LinQ Fasteners.
- Single day use soft cooler.
- Mesh pocket on top of the lid.
- Zippered pocket under the lid for quick and easy access.
- Removable interior for easy cleaning.
- Carry handles for easy transport to and from the water.
- Can contain twelve 355 ml cans.
- Dimensions: 19" L x 13" W x 10" H (48 cm L x 33 cm W x 25 cm H).

**NEW**



## LinQ 5.3 US gal (20 L) Cooler

Models with LinQ Base Kit  
**295101257**

- LinQ-mounted for fast, easy and secure storage.
- Locks in place with just a quarter turn.
- High-quality insulation for optimal ice retention.
- Keeps ice cold for 5 days.
- Rotomolded construction for exceptional rigidity and durability.
- Sealed lid for airtight, weather-tight closure.
- Rigid handles make transportation easy.
- Horizontal locking handles allow for installation of LinQ Lite accessories.
- Marine hardware suited for saltwater applications.
- Holds thirty-four 355 ml cans.
- 5.3 US gal (20 L) capacity.
- Exterior dimensions: 21" L x 15" W x 14" H (52 cm L x 38 cm W x 35 cm H)
- Interior dimensions: 15" L x 10" W x 9" H (39 cm L x 26 cm W x 23 cm H).

*Note: Cannot be mounted on the LinQ Stackable Fuel Caddy.*



## LinQ 8.5 US gal (32 L) Insulated Tote Bag

Models with LinQ Base Kit  
**295101247**

- 8.5 US gal (32 L) of thermal insulated, soft-sided storage.
- Quick, easy and secure LinQ system installation.
- Single day use soft cooler.
- Water-resistant construction.
- Robust outer material for durability with a modern look.
- Carry handles and removable shoulder strap for easy transport to and from the water.
- Featuring inside pockets, zipped pockets and adjustable carry straps on each side to store a towel.
- Collapsible if not fully packed with straps on both sides.
- Can contain eighteen 355 ml cans.
- Dimensions: 15.5" L x 8" W x 18.5" H (39 cm L x 20 cm W x 47 cm H).



## LinQ 11.4 US gal (43 L) Cooler

RXT, RXT-X, GTX and Wake Pro (2018 and up) / GTI, GTI SE, GTR, GTR-X and Wake 170 (2020 and up) / RXP-X (2021 and up) / All FishPro models (2019 and up) / Explorer Pro  
**715009276**

- Versatile LinQ 16" configuration fits many vehicles for fast, easy, secure storage.
- High-quality impact-resistant outer shell for exceptional durability.
- High-quality insulation for optimal ice retention up to 6 days
- 11.4 US gal (43L) capacity or sixty 355 ml cans.
- Rigid horizontal locking handles allows installation of LinQ Lite accessories.
- Dry basket included to protect items.
- New ergonomic and secure latch system offers excellent sealing.
- Inside the Sea-Doo Switch the cooler can be installed length or width wise to fit your needs.



## LinQ 4.2 US gal (16 L) Cooler

Models with LinQ Base Kit  
**295100698**

- Secure, easily installed LinQ-mounted cooler.
- Premium foam insulation holds ice up to five days.
- Durable rotomolded rigid construction.
- Sealed lid for airtight, weather-tight closure.
- Heavy-duty T-handle latches resistant to marine environments.
- Marine hardware suited for saltwater applications.
- Can contain twenty 355 ml cans.
- 4.2 US gal (16 L) capacity.
- Exterior dimensions: 13" L x 20" W x 10" H (33 cm L x 51 cm W x 25 cm H).
- Interior dimensions: 9" L x 17" W x 7" H (23 cm L x 43 cm W x 18 cm H).

*Note: Cannot be mounted on the LinQ Stackable Fuel Caddy.*



## LinQ 13.5 US gal (51 L) Cooler (Double Latch)

RXT, RXT-X, GTX, GTX Limited, Wake Pro (2018 and up) / RXP-X (2021 and up) / GTI, GTI SE, GTR, GTR-X, Wake (2020 and up) / Explorer Pro  
**269801151**

- 13.5 US gal (51 L) of insulated, water-resistant capacity, to carry up to 72 cans.
- Exceptionally rigid and highly durable with Premium-quality foam insulation for optimal ice retention up to 3 days.
- Heavy-duty external storage pocket adds extra room.
- Top features workspace with anti-slip surface for baiting hooks, and fish ruler molded into the top.
- T-handle heavy-duty latches are durable and resistant to seal the cover.
- Slots for rod or cup holders on each side.
- Angled trolling slots for the perfect multi-rod trolling.
- Exterior dimensions: 19" L x 31 1/2" W x 16 1/2" (48 cm L x 80 cm W x 42 cm H).

*LinQ 13.5 US gal (51 L) Cooler Extension (295101033) can be added on top for more storage. LinQ Rod Holders (295100795) are sold separately.*





### LinQ 13.5 US gal (51 L) Cooler Extension (Double Latch)

LinQ 13.5 US gal (51 L) Cooler (Double Latch) (269801151)

**295101033**

- Add 5.3 US gal (20 L) of extra storage to your existing 13.5 US gal (51 L) cooler.
- Fully insulated and easy-to-install.
- Ideal for separating your lunch from your catch or a separate tackle box.
- Can contain thirty-six 355 ml cans. Keeps ice cold for three days.
- Exterior dimensions: 19" L x 31 ½" W x 6 ½" H (48 cm L x 80 cm W x 16.5 cm H).
- Interior dimensions: 11 ½" L x 26" W x 5" H (29 cm L x 66 cm W x 13 cm H).

*Requires LinQ 13.5 US gal (51 L) Cooler (Double Latch) (269801151) for installation.*



### LinQ Cup Holder

Fits LinQ Front Supports and LinQ 13.5 US gal (51 L) Cooler

**295101230**

- Cup holder fits most beverage containers thanks to flexible fins that adjust to size of beverage.
- Can be installed on the 13.5 US gal (51 L) cooler or on the Cup and Rod Holder front supports.
- Toolless installation.
- Sold single.



### LinQ Rod Holder

Fits LinQ Front Supports and LinQ 13.5 US gal (51 L) Coolers

**295100795**

- Perfect to safely transport your fishing rods to your favorite fishing spots or for trolling.
- Features quick-attachment system with release lever for easy installation onto / removal from any of the 30 different positions on the LinQ 13.5 gal (51 L) Cooler or in front of some vehicles using the LinQ Front Supports.
- Firmly holds fishing rod using a molded rubber cap specifically designed to quickly secure or remove the fishing rod using the reel arm.



### LinQ Front Support

RXT, RXT-X, GTX, Wake Pro (2018 and up), FishPro (2019-2021), Explorer Pro, FishPro Sport, FishPro Trophy

**295100948** Left side

RXT, RXT-X, GTX, Wake Pro (2018 and up), FishPro (2019-2021), Explorer Pro, FishPro Sport, FishPro Trophy

**295100949** Right side

- Enables the installation of front-mounted LinQ Rod Holder (295100795) or LinQ Cup Holder (295101230) (sold separately).
- Allows for easy access to beverages or rod during trolling without impeding the driver.



### LinQ Lite Cup Holder

Spark (2024 and up)

**715009406**

- Keep your beverage within reach no matter where you're sitting on your Switch.
- Flexible fins adjust to various beverage container sizes to hold most securely.
- No permanent installation point means you're free to move it almost anywhere.
- Toolless placement, easy to move from place to place.
- Can be installed in the designated mounting points on the Adjustable Table, on the vehicle railing and on the Seat Corner Backrest.



### LinQ Front Support

GTI, GTI SE, GTR, GTR-X, Wake (2020 and up), FishPro Scout

**295101039** Left side

GTI, GTI SE, GTR, GTR-X, Wake (2020 and up), FishPro Scout

**295101040** Right side

- Enables the installation of front-mounted LinQ Rod Holder (295100795) or LinQ Cup Holder (295101230) (sold separately).
- Allows for easy access to beverages or rod during trolling without impeding the driver.



### Knife/Plier Holder with Gaff Clip

Models with LinQ Base Kit  
**830201283**

- Conveniently stores your knife, scissors, pliers in a safe and organised manner.
- Unique clip design that provides constant pressure to the inserted knife blade, it will not bounce out.
- Comes screwed with 6mm black backing plate to assist in mounting locations.

*Notes: Mounting hardware is not supplied, you will need fixings to suit the material to be mounted on.*



### Gaff/Pole Holder Clips - Single

Models with LinQ Base Kit  
**830201285**

- Designed for easy access and removal
- Fully integrated with the LinQ 51L Cooler holding the gaff securely in place
- Sturdy construction with marine grade shock cord to hold gaff in place



### Gaff/Pole Holder Clips - Pair

Models with LinQ Base Kit  
**830201284**

- Designed for easy access and removal
- Fully integrated with the LinQ 51L Cooler holding the gaff securely in place
- Sturdy construction with marine grade shock cord to hold gaff in place



### 2-Spool Leader Holder

Models with LinQ Base Kit  
**830201287**

- Fishing line leader holder for 1 or 2 reels.
- Compact easy load system; a must-have for quick easy re-rig when the pressure is on.

*NOTE: mounting hardware is not supplied, you will need fixings to suit the material to be mounted on.*



### Tackle Tray Storage with Pair Gaff Holder Clips

Models with LinQ Base Kit  
**830201286**

- Designed for easy access and removal
- Maximises space utilisation
- Designed to fit popular tackle tray brands
- Sturdy construction Marine grade shock cord to secure tackle trays



### LinQ Lite Action Camera Holder

Spark (2024 and up)  
**295101139**

- LinQ lite attachment system for cameras.
- Provides great vantage points to capture photos and videos.
- Offers 360-angle positioning for perfect filming and taking photos.
- Designed to hold devices securely.
- Fast, easy attachment and removal.





### LinQ 2.6 US gal (10 L) Modular Cargo Box

Models with LinQ Base Kit  
**715005494**

- 2.6 US gal (10 L) of hard-sided modular cargo capacity.
- Heavy-duty construction with weather-resistant sealed lid.
- Stackable with an additional LinQ Modular Box (715005494, 715007112) or LinQ Roll-Top Bag (715008110) for expanded storage.
- Capable of mounting in multiple LinQ attachment location for added convenience.
- Dimensions: 19" L x 12 ½" W x 5" H (48 cm L x 32 cm W x 13 cm H).

*Requires LinQ Base Installation Kit (295101009) to stack boxes or bag*



### LinQ 7.8 US gal (30 L) Modular Cargo Box

Models with LinQ Base Kit  
**715006830**

- 7.8 US gal (30 L) of hard-sided modular storage capacity.
- Dimensions: 19" L x 12 ½" W x 14" H (49.5 cm L x 32.3 cm W x 35 cm H).
- Heavy-duty construction with weather-resistant sealed lid.



### Thermal Insert for LinQ 2.6 US gal (10 L) Modular Cargo Box

**219401110**

- Insulated liner.
- Fits very well in the LinQ 2.6 US gal (10 L) Modular Cargo Box.
- Can contain five 473 ml cans or six 355 ml cans.
- Keeps ice cold for one day.
- Interior dimensions: 17" L x 9" W x 2 ½" H (43 cm L x 23 cm W x 7 cm H).



### LinQ 5 US gal (20 L) Modular Cargo Box

Models with LinQ Base Kit  
**715007112**

- 5.2 US gal (20 L) of hard-sided modular storage capacity.
- Dimensions: 19" L x 12 ½" W x 9" H (49.5 cm L x 32.3 cm W x 23.5 cm H).
- Heavy-duty construction with weather-resistant sealed lid.
- Additional LinQ Modular Box (715005494) can be stacked on top for the ideal storage solution.

*Requires LinQ Base Installation Kit (295101009) to stack boxes or bag.*



### LinQ Base Installation Kit

Fits LinQ 3.8 gal (14.5 L) Stackable Fuel Caddy  
**295101009**

- LinQ Base Kit allows select Sea-Doo LinQ accessories to be stacked on top of the LinQ 3.8 US gal (14.5 L) Stackable Fuel Caddy (295100950).
- Includes 2 LinQ bases and maritized hardware for quick install.



### LinQ 3.8 US gal (14.5 L) Stackable Fuel Caddy

Models with LinQ Base Kit  
**295100950**

- Quickly and easy, secure installation with the LinQ accessory system.
- No-spill spout designed for easy pouring.
- 3.8 US gal (14.5 L) capacity.
- Allows for added storage by stacking LinQ 10.6 US gal (40 L) Roll-Top Bag (715008110).
- Marineized for saltwater use.
- Dimensions: 13" L x 19" W x 9" H (33 cm L x 48 cm W x 23 cm H).
- Note: Fuel caddies cannot be stacked.

Requires LinQ Base Installation Kit (295101009).



### LinQ 5 US gal (20 L) Fuel Caddy

Models with LinQ Base Kit  
**715007822**

- Quick, easy and secure LinQ system installation.
- Spill-free spout for easy use.
- 5 US gal (20 L) capacity.
- Meets new Flame Mitigation Device (FMD) standard.
- Dimensions: 12" L x 19" W x 12" H (30.5 cm L x 48 cm W x 30.5 cm H).



### LinQ 5 US gal (20 L) Seat Bag

GTI, GTI SE, GTX, GTX Limited, Explorer Pro, GTR, GTR-X, RXT-X, RXP-X, Wake, Wake Pro, FishPro Apex, FishPro Scout, FishPro Sport, FishPro Trophy  
**295101073**

- 5 US gal (20 L) of UV-resistant storage.
- Perfect to store fenders, ropes or second passenger items.
- Smartly secures behind the passenger seat to maximize rear deck space.
- Installs in seconds with toolless LinQ accessory system.
- Two-pocket primary organization compartments with three zippered openings.
- External side pocket for fast access to small necessities.
- Not compatible with LinQ Multi Cargo Rack.



### LinQ 10.6 US gal (40 L) Roll-Top Bag

Models with LinQ Base Kit  
**715008110**

- LinQ Roll-Top Bag offers 10.6 gal (40 L) of fully waterproof adjustable storage for your essentials.
- Its roll-top design secures your gear snugly, while a heavy-duty rigid plastic base and foam-lined bottom offer additional protection for the long haul.
- An integrated handle allows for easy transportation on or off the vehicle.
- Equipped with Marineized LinQ Hardware Kit.
- Dimensions: 14" L x 19" W x adjustable H (35.5 cm L x 48 cm W x adjustable H).

**NEW**



### LinQ 7.9 US gal (30 L) Dry Bag

Models with LinQ Base Kit  
**295101364**

- 7.9 US gal (30 L) storage capacity.
- Installs in seconds with toolless LinQ accessory system.
- Ideal for keeping essentials secure and dry on your adventures.
- Features a watertight zipper (Tizip®).
- Includes a shoulder strap for added convenience.
- Dimensions: 13" L x 14" W x 10" H (32 cm L x 37 cm W x 25 cm H).

**NEW**



### LinQ 13.2 US gal (50 L) Dry Bag

Models with LinQ Base Kit  
**295101365**

- 13.2 US gal (50 L) storage capacity.
- Installs in seconds with toolless LinQ accessory system.
- Ideal for keeping essentials secure and dry on your adventures.
- Features a watertight zipper (Tizip®).
- Includes a shoulder strap for added convenience.
- Dimensions: 22" L x 14" W x 10" H (56 cm L x 37 cm W x 25 cm H).





### LinQ 26 US gal (100 L) Explorer Bag

Vehicle equipped with LinQ Multi Cargo Rack  
**295101016**

- 26 gal (100 L) of watertight storage.
- Installs in seconds with toolless LinQ accessory system.
- Dedicated essentials compartment for registration, license, insurance and more.
- Exclusive D.E.S.S. key storage.
- External quick-access pocket for small items like keys and wallets.
- Turns into a backpack when you get off your machine.
- Collapsible if not fully packed with straps on both sides.
- Dimensions : 26" L x 18" W x 14" H (65 cm L x 45 cm W x 35 cm H).

*Requires LinQ Multi Cargo Rack for installation.*



### Rear Deck Extension with LinQ

GTX, GTX Limited, RXT-X, Wake Pro  
**295101026**

- Extend the fun an extra 11.5 inches (≈30 cm) off the stern and add extra storage options.
- Includes six retractable LinQ attachment points maximize cargo capacity and stow out of the way when not in use.
- Three possible configurations: middle, left and right.
- Adds easier access to the water for swimming and watersports or more space for boarding, lounging, fishing and more.
- Compatible with the Ladder.



### LinQ Multi Cargo Rack

GTX, RXT-X, Wake Pro (2018 and up) / GTI, GTI SE, GTR, GTR-X, Wake (2020 and up) / RXP-X (2021 and up) / FishPro Scout, FishPro Sport  
**295101015**

- Adds up to three times the available LinQ accessory emplacement to your watercraft.
- Enables multiple LinQ accessory configurations.
- Provides a larger lounging area or casting platform and easier reboarding.
- Uses equipped LinQ attachment system for quick, easy installation.
- Two LinQ Base Installation Kits included.
- Additional Base Installation Kits sold separately (295101034).
- Standard on Explorer Pro model.

*Not compatible with LinQ 13.5 US gal (51 L) Cooler (Double Latch).*

*Must be installed by authorized BRP dealers.*



### LinQ Base Installation Kit

Fits LinQ Multi Cargo Rack  
**295101034**

- LinQ Base Kit allows use of up to three Sea-Doo LinQ accessories simultaneously on the LinQ Multi Cargo Rack.
- Includes 2 LinQ bases and marinized hardware for quick install.

**NEW**

### Set of 3 Watertight Roll-Top Bags

**295101448**

- 1.3, 2.6 and 5.3 US gal (5, 10 and 20 L) storage capacity.
- Set of three water-resistant bags.
- Roll-top design.
- Easy to fold and store.
- Perfect solution to organize your storage or bags.



### Dry Bag 2.6 US gal (10 L) \*

**269502121**

- Watertight bag.
- Puncture-resistant PVC-coated polyester fiber material.
- Reinforced bottom.



### Dry Bag 6.6 US gal (25 L) \*

**269001936**

- Watertight bag.
- Puncture-resistant PVC-coated polyester fiber material.
- Reinforced bottom.
- Includes a shoulder strap.
- 420-denier resistant polyester with TPU coating.



### Spark Front Storage Bin

Spark (2024 and up)  
**295101148**

- Splash proof design integrates perfectly on Spark models.
- 11.1 US gal (42 L) of storage.
- Provides a LinQ Lite anchor on each side for LinQ Lite Cup Holders.
- LinQ Lite Anchors not compatible with LinQ Lite Action Camera Holder or LinQ Lite fenders.
- 3-piece design installs easily.



### Removable Storage Bin Organizer

RXT, RXT-X, GTX, Wake Pro (2018 and up) / FishPro (2019-2021), Explorer Pro, FishPro Apex, FishPro Sport, FishPro Trophy  
**295100732**

- Breathable front bin organizer made from high-quality premium-coated synthetic mesh.
- Perfect for storing wet clothes away from the rest of your gear or to transport gear to/from the watercraft.
- Carrying handle and easy storage on or off the watercraft.
- Quick-attach fasteners to secure the bag in place inside the storage bin.

*Designed to be installed with the Storage Bin Organizer (295100835) for a complete set-up.*



### Removable Storage Bin Organizer

GTI, GTI SE, GTR, GTR-X and Wake 170 (2020 and up) / RXP-X (2021 and up) / FishPro Scout  
**295100814**

- Breathable front bin organizer made from high-quality premium-coated synthetic mesh.
- Perfect for storing wet clothes away from the rest of your gear or to transport gear to/from the watercraft.
- Carrying handle and easy storage on or off the watercraft.
- Quick-attach fasteners to secure the bag in place inside the storage bin.





### Storage Bin Organizer

RXT, RXT-X, GTX, Wake Pro (2018 and up) / FishPro (2019-2021), Explorer Pro, FishPro Apex, FishPro Sport, FishPro Trophy  
**295100835**

- Leave-in breathable premium-coated synthetic mesh organizer.
- Perfect for safely storing and organizing smaller valuables.
- Designed to be installed in conjunction with the Removable Storage Bin Organizer for a complete set-up (295100732).
- Standard on GTX Limited models (2018 and up).



### Lid Organizer

GTI, GTI SE, GTR, GTR-X and Wake 170 (2020 and up) / RXP-X (2021 and up) / FishPro Scout  
**295100862**

- Practically positioned in an easily accessible location in front compartment.
- Keep your small items dry in splash-proof inner pocket.
- External mesh pocket allows you to store more items while keeping them in view.
- 1.6 US gal (6 L) volume.

## Watersport Accessories

**NEW**



### LinQ Rear Floating Mat Holder

Models with LinQ Base Kit  
**295101366**

- Quickly attach and secure a floating mat to the rear deck of your watercraft.
- Installs in seconds with toolless LinQ accessory system.
- Suitable for rolled floating mats up to 28" (71 cm) in diameter.
- Can be paired with another holder for a larger floating mat (Switch models only).
- Holds up to 30 lb (14 kg) in single or dual mode.



### Spark Spotter Handle & Camera Mount

Spark for 3 (2024 and up)  
**295101145**

- Provides a comfortable and solid grip for the spotter.
- Quick connect installs in a matter of seconds.
- Can be stowed in the front storage area.
- Integrated LinQ Lite Action Camera Holder (295101139).



### LinQ Lite Action Camera Holder

Spark (2024 and up)  
**295101139**

- LinQ lite attachment system for cameras.
- Provides great vantage points to capture photos and videos.
- Offers 360-angle positioning for perfect filming and taking photos.
- Designed to hold devices securely.
- Fast, easy attachment and removal.



### Tow Point Cleat Adaptor

GTI (2020 and up), GTI SE (2020 and up), GTR (2020 and up), GTR-X (2024), RXP-X (2021 and up), RXP-X APEX, FishPro Scout (2022 and up), Wake (2020 and up), Spark  
**295101217**

- Converts the standard rear eyelet into a hybrid cleat.
- Allows quick and easy attachment of looped ropes.



### LinQ Retractable Ski Pylon

RXT, RXT-X, GTX, GTX Limited (2018 and up) / GTI, GTI SE, GTR (2020 and up) / All FishPro models (2019 and up), Explorer Pro, Wake (2020 and up), Wake Pro (2018 and up).  
**295100909**

- High-rise pylon keeps rope out of water for better watersport fun.
- Features built-in spotter grab handles and retracts out of the way when not in use.

*Not compatible with LinQ Cargo Rack (295101015) and LinQ 5 US gal (20 L) Fuel Caddy (715007822).  
 Note: Never use the Ski Pylon to tow an inflatable or similar toy. Always use the rear cleat.*



### Wakeboard Rack

RXT, RXT-X, GTX, GTX Limited, Wake Pro (2018 and up) / GTI, GTI SE, GTR, GTR-X, Wake (2020 and up) / FishPro Scout  
**295100838**

- Easy, safe onboard storage for your wakeboard.
- Convenient quick-release button for fast access.
- EVA foam cushion protects board edge while underway.
- Bungee cord with rubber pads holds board in place while preventing wear on the cord.
- Accommodates most sizes and styles of wakeboards and wakeskates.
- Sold individually, each rack holds one wakeboard.
- Standard on WAKE and WAKE PRO models.

## Step & Ladders



### Shock Tube

**295100662**

- Protects passengers from ski rope kick-back and keeps it away from impellers.
- Durable nylon covered closed-cell foam.



### Boarding Step

Spark  
**295100642**

- Convenient step with knee-friendly surface.
- Installs easily on the right side of a SPARK and can hold up to 250 lb (113 kg).
- Easily mounts on the transom and can be installed by any authorized Sea-Doo dealer in minutes.



### Boarding Ladder

RXT, RXT-X, GTX and Wake Pro (2018 and up) / GTI, GTI SE, GTR, GTR-X and Wake 170 (2020 and up) / RXP-X (2021 and up) / All FishPro models (2019 and up)  
**295100869**

- Retractable boarding step designed for your watercraft.
- Makes boarding from the water much easier.
- Spring-loaded platform that stays in the "up" position.
- Direct bolt-on installation, thanks to integrated mounting points on the watercraft.



# Steering Controls



## Handlebar with Adjustable Riser

Spark  
**295101204**

- The one-of-a-kind handlebar with adjustable riser gives you more leverage to easily maneuver the SPARK and customise your experience to your personal riding style.
- Quickly adjust steering to a variety of heights: use the lower position for cruising/sitdown riding, or extend to maximum height in seconds for stand-up riding.
- Adjustable length of 1.6" to 4" (42.5 mm to 103.5 mm).
- Just flip the lever to make the adjustment, no tool required.

*Requires part numbers for installation:*  
*SPARK without iBR\**  
 2016 and prior: 278003491, 295100702  
 2017 and up: 278003491  
*SPARK with iBR*  
 2016 and prior: 278003490, 295100702  
 2017: 278003490  
 2018 and up: 278003823  
 2024 and up: 278004180 on base and convenience package  
 \*Intelligent Brake and Reverse (iBR).



## Extended Range Variable Trim System (VTS)

Spark (2024 and up)  
**295101260**

- This Sea-Doo exclusive accessory lets you exaggerate how high you can raise the nose or how deep you can bury it in the water.
- The extended range VTS doubles the range of adjustment compared to our current standard VTS.
- Adjustments are instantaneous thanks to the quick activation Switch mounted on the handlebar to allow fine tuning of the watercraft trim angle while riding.
- Simple plug-in connection
- Includes Switch, cap and hardware necessary for installation.

*We highly recommend purchasing the Step Wedges (295101263) for installation.*  
*A software update will be required on Spark 2024 models to use the VTS.*



## Adjustable Riser\*

RXP-X (2021-2023), GTR-X (2024 and up)  
**295101203**

- Replaces stock fixed extrusion to allow vertical adjustment length of + $\frac{1}{2}$ " to 3  $\frac{1}{2}$ " (+16 mm to 92 mm) from stock.
- Ergonomically better in stand-up riding position.
- Includes all hardware required for installation.
- Not compatible with vehicle equipped with steering damper.



## Heated Grips

RXT, RXT-X, GTX, GTX Limited, Wake Pro (2018 and up) / RXP-X (2021 and up) / GTI, GTI SE, GTR, GTR-X, Wake (2020 and up) / All FishPro models (2019 and up), Explorer Pro. Heated grip harness required to install on other vehicles  
**295100812**

- Heated grips with integrated button on the left grip.
- Five levels of heat.
- Slip on to replace existing grips.
- Sea-Doo's renowned integrated palm rest design.
- Use with Wind Deflectors for Handlebar (295100762) for maximum performance.

*Needs harness (278003684) if installed with more than two electrical accessories.*  
*Heated Grips Harness Extension (278004347) is needed for installation on Explorer Pro models.*  
*Sold in pairs.*



## Step Wedges

Spark (2024 and up)  
**295101263**

- Provide more stability and confidence in different tail stand riding positions.
- Rear footrest with a 45-degree slope to enable you to stand upright on your watercraft when performing tail stands and ultimately expand your range of possibilities by making it easier to pull off even more tricks.



## Heated Grips Harness

Needed for installation on some vehicles: GTX, RXT, Wake Pro (2011-2017) / GTI, GTI SE, GTR, Wake (2011-2019) / GTR-X (2018-2019) / RXP-X (2018-2020) / Spark (2014-2023)  
**295100906**

- Needed for installation on some vehicles.
- Required for GTX, RXT, WAKE PRO (2011-2017), GTI, GTI SE, GTR, WAKE (2011-2019), GTR-X (2018-2019), RXP-X (2018-2020) and SPARK*

NEW

# Platinum Audio System Kit

BRP'S **MOST POWERFUL** AUDIO SYSTEM FOR PERSONAL WATERCRAFT.



## FEATURES

- Two 80-watt speakers for music clarity, even while riding.
- Unique and stylish design makes the speakers stand out.
- An amplifier with two 80-watt channels delivers a loud music experience.
- Advanced Digital Sound Processing (DSP) optimizes sound quality.
- Fully integrated Audio System with Bluetooth connectivity.
- Remote control pad on left speaker for quick and easy song and volume changes.
- Fully submersible.
- Music will play even after engine is turned off.
- Needs harness (278003684) if installed with more than two electrical accessories.



# Audio

NEW



## 2x 80 W Platinum Audio System Kit

RXT, RXT-X, GTX, Wake Pro (2018 and up) / FishPro (2019-2021), Explorer Pro, FishPro Sport, FishPro Trophy  
**295101458**

- The Platinum Audio System Kit is BRP's most powerful audio system for personal watercraft.
- Two 80-watt speakers for music clarity, even while riding.
- Unique and stylish design makes the speakers stand out.
- An amplifier with two 80-watt channels delivers a loud music experience.
- Advanced Digital Signal Processing (DSP) optimizes sound quality.
- Fully integrated Audio System with Bluetooth connectivity.
- Remote control pad on left speaker for quick and easy song and volume changes.
- Fully submersible.
- Music will play even after engine is turned off.

*Needs harness (278003684) if installed with more than two electrical accessories.*



## BRP Audio - Portable System

Spark (2024 and up)  
**295101147**

- Portable design that integrates perfectly on Spark.
- Powered with a rechargeable lithium battery that offers up to 24 hours of autonomy.
- Mounting point is standard on the vehicle. Front mounted and positioned toward driver for maximum sound clarity.
- 50 watts of power.
- Bluetooth connectivity.
- Control pad on the speaker for volume and song adjustment.
- Ride mode enhances sound experience when in motion.
- Interconnects with other BRP Audio Systems for concert-like sound.
- Can be controlled by a cell phone.
- Floats on water.

NEW



## 2x 80 W Platinum Audio System Kit

GTI, GTI SE, GTR, GTR-X and Wake 170 (2020 and up) / RXP-X (2021 and up) / FishPro Scout  
**295101459**

- The Platinum Audio System Kit is BRP's most powerful audio system for personal watercraft.
- Two 80-watt speakers for music clarity, even while riding.
- Unique and stylish design makes the speakers stand out.
- An amplifier with two 80-watt channels delivers a loud music experience.
- Advanced Digital Signal Processing (DSP) optimizes sound quality.
- Fully integrated Audio System with Bluetooth connectivity.
- Remote control pad on left speaker for quick and easy song and volume changes.
- Fully submersible.
- Music will play even after engine is turned off.

*Needs harness (278003684) if installed with more than two electrical accessories.*



## BRP Audio - Premium System

RXT, RXT-X, GTX, Wake Pro (2018 and up) / FishPro (2019-2021), Explorer Pro, FishPro Sport, FishPro Trophy  
**295100711\***

- Fully integrated Audio System with Bluetooth connectivity.
- Fully submersible.
- Two powerful 50-watt speakers for music clarity, even while riding.
- Remote control pad on left speaker to quickly and easily change songs and volume.
- Music will play even after engine is turned off.

*Needs harness (278003684) if installed with more than two electrical accessories.*

NEW



## 2x 80 W Platinum Audio System Upgrade

**295101512**

- The Platinum Audio System Kit is BRP's most powerful audio system for personal watercraft.
- Two 80-watt speakers for music clarity, even while riding.
- Unique and stylish design makes the speakers stand out.
- An amplifier with two 80-watt channels delivers a loud music experience.
- Advanced Digital Signal Processing (DSP) optimizes sound quality.
- Fully integrated Audio System with Bluetooth connectivity.
- Remote control pad on left speaker for quick and easy song and volume changes.
- Fully submersible.
- Music will play even after engine is turned off.

*Needs harness (278003684) if installed with more than two electrical accessories.*



## BRP Audio - Premium System

GTI, GTI SE, GTR, GTR-X and Wake 170 (2020 and up) / RXP-X (2021 and up) / FishPro Scout  
**295100839\***

- Fully integrated Audio System with Bluetooth connectivity.
- Fully submersible.
- Two powerful 50-watt speakers for music clarity, even while riding.
- Remote control pad on left speaker to quickly and easily change songs and volume.
- Music will play even after engine is turned off.

*Needs harness (278003684) if installed with more than two electrical accessories.*

*\* While supplies last*

NEW

# Touchscreen Garmin GPS



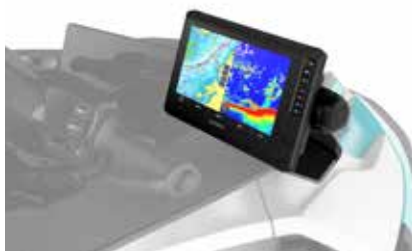
## FEATURES

- Bright, sunlight-readable 9" (23 cm) touchscreen Garmin GPS.
- Transducer not included, provides GPS function only.
- Features a quick-release bail mount for quick installation and removal.
- Preloaded worldwide basemaps and compatible with Bluechart® G3 coastal charts (sold separately).
- Share data and maps with select ECHOMAP devices on your network.
- Use built-in Wi-Fi® to pair with the free ActiveCaptain™ app for access to OneChart™, smart notifications, Garmin Quickdraw™ Community data and more.
- Standard on FishPro Trophy model.



# Electronics & Electrical

**NEW**



## Garmin ECHOMAP™ UHD2 9" sv GPS

RXT, RXT-X, GTX, Wake Pro (2018 and up) / RXP-X (2021 and up) / GTI, GTI SE, GTR, GTR-X, Wake (2020 and up) / All FishPro models (2019 and up), Explorer Pro  
**295101262**

- Bright, sunlight-readable 9" (23 cm) touchscreen Garmin GPS.
- Transducer not included, provides GPS function only.
- Features a quick-release bail mount for quick installation and removal.
- Preloaded worldwide basemaps and compatible with Bluechart® G3 coastal charts (sold separately).
- Share data and maps with select ECHOMAP devices on your network.
- Use built-in Wi-Fi® to pair with the free ActiveCaptain™ app for access to OneChart™, smart notifications, Garmin Quickdraw™ Community data and more.

*Standard on FishPro Trophy model.  
 Needs harness (278003684) if installed with more than two electrical accessories.*



## Fish Finder and Depth Finder Garmin® GT15M-IH Transducer

**295100972**

- Garmin's GT15M-IH In-Hull Mid-Band CHIRP Transducer provides accurate depth readings even at high speed.
- Ideal for watercraft that want to install the transducer inside a fiberglass hull and not on the transom.
- It can be used with a hull deadrise angle between 0 and 25 degrees and is excellent for watercraft traveling at high speeds.
- In-Hull installation, no need to drill through the vessel; no drag.
- The 8-pin transducer with 1 plastic tank features mid-band CHIRP traditional sonar (85-165 kHz) and has a power rating of 600 W.

*Requires Garmin® ECHOMAP™ UHD 72sv or 62cv GPS. Standard on FishPro Trophy models.*



## Garmin® ECHOMAP™ UHD 72sv GPS

RXT, RXT-X, GTX, Wake Pro (2019 and up, except GTX Limited 2025 and up) / GTI, GTI SE, GTR, GTR-X and Wake 170 (2020 and up) / RXP-X (2021 and up) / Explorer Pro / FishPro (all models)  
**295101264**

- Bright, sunlight-readable 7" (17.8 cm) touchscreen.
- GPS support included for installation.
- Transducer not included, provides GPS function only.
- Features a quick-release bail mount for quick installation and removal.
- Preloaded worldwide basemaps and compatible with Bluechart® G3 coastal charts (sold separately).
- Share data and maps with select ECHOMAP devices on your network.
- Use built-in Wi-Fi® to pair with the free ActiveCaptain™ app for access to OneChart™, smart notifications, Garmin Quickdraw™ Community data and more.

*Needs harness (278003684) if installed with more than two electrical accessories.*



## Secondary Battery Harness Kit

GTI, GTI SE, GTR, GTR-X and Wake 170 (2020 and up) / FishPro Scout  
**295100990**

RXT, RXT-X, GTX and Wake Pro (2018 and up) / FishPro (2019-2021), Explorer Pro, FishPro Sport, FishPro Trophy  
**295100991**

- Allows you to add a second unit to your dual battery setup.
- Will give you the extra juice you'll need to power electrical components like the BRP Audio - Premium System or Garmin Echomap GPS for longer periods.
- Kit includes necessary wiring and battery holder.

*Additional battery sold separately (410301203).*



## 10.25" Colour Touchscreen Protector

Vehicle equipped with 10.25 in. Colour Touchscreen Display  
**860202680**

- Tempered glass - 0.3 mm thick.
- 9H hardness for tough protection.
- 100% bubble free adhesive.
- Anti-scratch, anti-glare and anti-fingerprint.
- Maintains 99.99% clarity.
- Easy to clean.
- Includes cleaning tools: wet wipe, dry wipe, dust absorber and soft cloth.



## Electric Connection Kit

All Spark models, GTI 90 (2017 and up)  
**295100599**

- A very convenient and safe way to add electrical accessories.
- Plug-and-play connection.

*Required in order to install the Depth Finder on specific models (Refer to the Depth Finders table).*



### RF Programmable D.E.S.S.™ Key

All vehicles with D.E.S.S. key (2015 and up)  
**278003401** Green (Learning Key)

All vehicles with D.E.S.S. key (2015 and up)  
**278003400** Yellow

All vehicles with D.E.S.S. key (2015 and up)  
**278003402** Black

All vehicles with D.E.S.S. key (2015 and up)  
**278003403** Orange

- Digitally Encoded Security System (D.E.S.S.) key snaps on the vehicle and provides easy and quick starts.
- Anti-theft technology: the key communicates with the vehicle wirelessly, so the vehicle starts only when the key code matches the vehicle.
- The Programmable D.E.S.S. Key can also be programmed to limit the speed of the watercraft, enabling first time users and less experienced operators to learn how to operate while gaining the necessary confidence and control.
- Can be used as replacement key or second key.
- All Sea-Doo keys must be programmed at the dealer.



### Ski and X Package Module

RXT, RXT-X, GTX, GTX Limited, Wake Pro (2018-2023) / GTI (2018-2019) / GTI SE, GTI Limited, GTR, GTR-X, Wake (2018-2023) / All FishPro models (2019-2023) / Explorer Pro (2023)  
2024 and up: GTX (230 hp, 300 hp), GTX Limited, Wake Pro, GTR, GTR-X, Explorer Pro (230 hp), FishPro Apex  
**295100857**

- One module that includes both Ski and X Package functions:
- Activates ski mode: Offers a choice of different preset acceleration curves for the perfect launch every time when towing a skier or wakeboarder, plus steady tow speed.
- Activates X package functions on gauge.
- See X Package Module description to find out which X features it unlocks on your vehicle.
- User-friendly interface on gauge.
- Simple plug-in connection.
- Includes hardware necessary for installation.
- Standard on Switch Sport models.



### RF Programmable D.E.S.S.™ Key Kit

Spark  
**295100945**

- Digitally Encoded Security System (D.E.S.S.) key's ball-and-socket design provides riders with easy and quick starts.
- Anti-theft technology: the key communicates with the vehicle wirelessly, so the vehicle starts only when the key code matches the vehicle.
- The RF Programmable D.E.S.S. Key can also be programmed to limit the speed of the watercraft, enabling first time users and less experienced operators to learn how to operate while gaining the necessary confidence and control.
- All Sea-Doo keys must be programmed at the dealer.
- Can be used as replacement key or second key.
- Includes RF programmable D.E.S.S.™ Key and D.E.S.S. post.

*Requires part numbers for installation:*

*SPARK without iBR\*: 278003491*

*SPARK with iBR:*

*2017 and prior: 278003490*

*2018 and up: 278003823*

*SPARK TRIXX:*

*2017 and prior: 278003490 and 278003195*

*2018 and up: 278003823 and 278003195*

*\* Intelligent Brake and Reverse (iBR).*

*Unlike previous D.E.S.S. Key kits, harness now sold separately.*



### Ski and X Package Module

2024 and up: RXT-X, RXP-X, GTX (170 hp), GTI, GTI SE, Wake, Explorer Pro (170 hp), All FishPro models (except FishPro Apex)  
**295101271**

- One module that includes both Ski and X Package functions.
- Activates ski mode: Offers a choice of different preset acceleration curves for the perfect launch every time when towing a skier or wakeboarder, plus steady tow speed.
- Activates X Package Module functions.
- See X Package Module for complete list of functions.
- User-friendly interface on gauge.
- Simple plug-in connection.
- Includes hardware necessary for installation.



### Key Bracelet

RF Programmable D.E.S.S.™ Key  
**278004088**

- Bracelet only.
- RF Programmable D.E.S.S.™ Key sold separately.



### 12-Volt Outlet and Installation Kit

Spark (2023 and prior) / GTI, GTS, GTR, Wake 155 (2019 and prior) / RXP-X (2020 and prior)  
**295100577**

GTX and RXT without suspension and Wake Pro (2016-2017)  
**295100675**

- Use this 12 V outlet to charge your phone or GPS unit.
- Equipped with waterproof cover to prevent water infiltration.

*Needs harness (278003684) if installed with more than two electrical accessories.*

### DEPTH FINDERS

- Display the water depth below the hull.
- Plug-and-play connection.
- Integrates depth display into gauge menu.
- Does not require Garmin ECHOMAP GPS screen for installation.



MODEL	YEAR	SKU
Spark	2014 and up	<b>295100679</b>
GTI 90°, GTI 130, GTI SE, GTR, GTR-X, Wake 170	2020 and up	<b>295100872</b>
GTX, Explorer Pro	2018 and up	<b>295100927</b>
GTX Limited	2018 and up	<b>295100927</b>
RXT, RXT-X	2018 and up	<b>295100927</b>
RXP, RXP-X	2018 and up	<b>295100927</b>
Wake Pro	2018 and up	<b>295100927</b>

*Needs harness (278003684) if installed with more than two electrical accessories.*

### BILGE PUMP KITS

- Keeps engine compartment dry for added peace of mind.
- Includes all necessary items for installation (bilge pump, mounting bracket, bilge fitting, hose and hardware).
- Plug and play installation: Plugs directly into watercraft fuse box.



MODEL	YEAR	SKU
Spark	2014 and up	<b>295101218</b>
Wake	2020 and up	<b>295101035</b>
GTI, GTI SE, GTR, GTR-X	2020 and up	<b>295101035</b>
FishPro (All models)	2019 and up	<b>295101035</b>
Explorer Pro, GTX, GTX Limited	2018 and up	<b>295101035</b>
RXT, RXT-X	2018 and up	<b>295101035</b>
RXP-X	2021 and up	<b>295101035</b>
Wake Pro	2018 and up	<b>295101035</b>

*Needs harness (278003684) if installed with more than two electrical accessories.*



### USB Port

RXT, RXT-X, GTX, Wake Pro (2018 and up) / RXP-X (2021 and up) / GTI, GTI SE, GTR, GTR-X, Wake (2020 and up) / All FishPro models (2019 and up), Explorer Pro  
**295100710**

- Allows you to charge your devices like phone and action camera.
- USB charger equipped with a smart module that detects the amperage your phone needs so you always enjoy consistent charge time and never have to worry about frying your device.

*Needs harness (278003684) if installed with more than two electrical accessories.*



# Body Accessories



## Touring Windshield

GTX, GTX Limited, RXT-X, Wake Pro, FishPro Sport, FishPro Trophy  
**295101017**

- Stay protected from wind and splash from waves with 23-inch (58 cm) windshield.
- Seamlessly integrated with thermoforming construction for crystal-clear vision.
- Includes windshield support, bag and Allen wrench for easy transportation and installation.



## Wind Deflectors for Handlebar

GTX, RXT, RXT-X, and Wake Pro (2010 and up) / GTI, GTS and Wake (2011 and up) / GTR, GTR-X and RXP-X (2012 and up) / Spark (2014 and up)  
**295100762**

- Design delivers better protection and great style.
- Protection from cold wind and water splashes.
- Sold in pairs.

*Not compatible with Touring Windshield (295101017)*



## Footwell Grip Mats

Spark (2024 and up)  
**295101140**

- Thick EVA foam mats.
- Attached to ABS plates.
- Attached to the top deck with self-sealing fasteners.
- No need to stick the mats to surfaces.



## Floorboard Wedges

RXT, GTX and Wake Pro (2018 and up) / FishPro (2019-2021), FishPro Apex, FishPro Sport, FishPro Trophy, Standard on RXT-X (2018 and up), Explorer Pro  
**295100745**

- Designed for high performance riding, extended angled floorboard wedges will keep all riders and passengers firmly planted, comfortable and secure.
- When used in conjunction with our Ergolock Knee Pads, the wedges ensure everyone can enjoy the full capabilities of the watercraft.



## Floorboard Wedges

GTI, GTI SE, GTR, GTR-X, Wake 170 (2020 and up) / FishPro Scout, Standard on RXP-X (2021 and up)  
**295100926**

- Designed for high performance riding, extended angled floorboard wedges will keep all riders and passengers firmly planted, comfortable and secure.
- When used in conjunction with our Ergolock Knee Pads, the wedges ensure everyone can enjoy the full capabilities of the watercraft.



## Angled Gunwale Footrests

RXT, RXT-X and GTX (2018 and up)  
**295100793**

- 4' long angled footrests with integrated mats, fixed on the upper outside edge of the footwell on each side of the watercraft.
- Provide a comfortable and secure position for the feet and legs while fishing from the side of the watercraft.
- Protect the paint finish on the edge of the footwells from abrasion caused by fishing.



### Spark Mirrors

Spark (2024 and up)  
**295101144**

- Integrated design is located out of the way.
- Large field of view.
- Provides vision sitting or standing up.
- Sold in pairs.



### Passenger Seat

RXP-X (2021 and up)  
**295100923**

- Only way to have a passenger on a stock RXP-X.
- Two grab options for passengers, side and middle.
- No tools required for installation: simply remove driver cushion, unclip base, and clip on passenger seat.



### Trixx for 2 Seat Kit

Spark Trixx for 1 (2024 and up)  
**295101259** Dazzling Blue

Spark Trixx for 1 (2024 and up)  
**295101150** Dragon Red

Spark Trixx for 1 (2024 and up)  
**295101222** Neon Yellow

- Convert a Trixx for 1 watercraft into a Trixx for 2 in seconds.
- Includes mount and all hardware.



### Fishing Seat

RXT, RXT-X, GTX and Wake Pro (2018 and up),  
Explorer Pro  
**295100882**

- Designed for ease of movement from driver position to passenger for fishing.
- Optimized for fishing facing sideways with increased lateral stability when combined with the Angled Gunwale Footrests (295100793).
- Fits all watercraft Colourations.

**NEW**



### Ergolock™ R Racing Seat for GTR-X

GTR-X, RXP-X (2024 and up)  
**295101463**

- A performance-ready Ergolock™ seat compatible with GTR-X.
- Adjustable saddle comfortably supports the rider during acceleration and anchors him when turning.
- 5 inches (13 cm) of adjustment to fit all riders.
- No tools required for installation.
- Same seat as RXP-X.

*Compatible with Passenger Seat (295100923).*

# Docking & Beaching



## LinQ Lite Fenders

Spark (2024 and up)  
**295101138**

- Perfect-fit fenders for Spark models.
- LinQ Lite attachment system is fast and easy.
- Durable material also floats.
- Sold in pairs.



## Snap-in Fenders

Fit on all watercraft (except Spark 2024 and up)  
**295100418**

- Protect your investment from dock damage with these easy-to-install and remove fenders designed specifically for Sea-Doo watercraft.
- Front and rear on the SPARK models ensure a solid mount in the optimal spot.
- The Snap-in Fenders float and the high-visibility orange Colour keeps them in sight.
- Patent pending.
- Sold in pairs.

*Requires Snap-in Fenders Installation Kit (295100550, 295100729 or 295100944) to install on models other than SPARK.*



## Snap-in Fenders Installation Kit

RXP-X (2012-2020) / GTI, GTR and GTS (2011-2019) / GTX, RXT, RXT-X and Wake Pro (2010-2017)

**295100550**

RXT, RXT-X, GTX and Wake Pro (2018 and up) / FishPro (2019-2021), Explorer Pro, FishPro Apex, FishPro Sport, FishPro Trophy

**295100729**

GTI, GTI SE, GTR, GTR-X and Wake 170 (2020 and up) / RXP-X (2021 and up) / FishPro Scout  
**295100944**

- Lets you enjoy the fastest, easiest way to install protective fenders on your watercraft.
- Not required for SPARK models.



## Spark Speed Tie

Spark (2024 and up)  
**295101142**

- Robust, integrated design.
- Stow out of the way.
- Easy access.
- Helps stabilize the watercraft while docked.
- 6 ft. (1.83 m) length.
- 3 per pack.



## Speed Tie

GTX, RXT, RXT-X, Wake Pro (2018 and up)  
**295100885**

- Fully integrated watercraft mooring system, providing the ultimate in convenient, quick and secure docking.
- A must-have accessory that frees up storage space and ensures you have a dock line at all times.
- Easy-to-use integrated rope management system.
- ¼ inch (6.4 mm) double-braided rope, 5.2 feet (1.6 m) at front and 9 feet (2.8 m) at rear.
- Positive locking for worry-free docking.



## Speed Tie

Explorer Pro, FishPro (2019-2021), FishPro Sport, FishPro Trophy  
**295100924**

- Fully integrated watercraft mooring system, providing the ultimate in convenient, quick and secure docking.
- A must-have accessory that frees up storage space and ensures you have a dock line at all times.
- Easy to use, integrated rope management system.
- ¼-inch (6.4 mm) double-braided rope, 11.5 feet (3.5 m) at front.
- Positive locking for worry-free docking.





### Spike Anchor

All models  
**295101255**

- 25 ft. rope.
- Can be used in sand, clay and lakes.
- Depth level indicator on the anchor.
- Gentle on your foot/hand when pressing on it.
- Easy to use, easy to clean.
- Lightweight, easily fits in front storage compartment of watercraft.
- Portable carry bag included.



### Folding Anchor

**295100750**

- 3.5 lb (1.6 kg) grapnel folding anchor with protective coating.
- Perfect for temporary mooring of watercraft and small boats in mud, sand, gravel, and rock.
- Includes a 25 ft. (7.62 m) marine-grade rope with an in-line buoy, heavy-duty stainless-steel snap hook, and a nylon storage case.
- Compact enough for the storage compartment.



### Sandbag Anchor

**295100661** Yellow

- Made of 600-denier solution-dyed yellow polyester fabric capable of holding an estimated 45 lb (20 kg) of wet sand.
- Measures 15 3/4" x 9" (40 cm x 22.9 cm).
- 16 ft. half-inch nylon strap (4.9 m x 1.3 cm).
- Plastic hook attachment and molded floater.

**NEW**



### Mooring Ropes

**295101475**

- Shock-cushioned nylon rope ideal for mooring your personal watercraft.
- 15 ft. (4.6 m) length.
- Highly durable, high strength.
- Sold in pairs.



### Dock Tie

**295100851**

- Moor your watercraft with this floating Sea-Doo shock-cushioned nylon rope.
- Protects your watercraft and keeps it moored.
- One per package.

# Riding Essentials



## Safety Equipment Kit

295100330

- This kit includes all the essentials for your watercraft.
- 50' (15 m) of buoyant heaving line, bailer, whistle and watertight flashlight.



## Registration Kit

3" (7.6 cm) All watercraft  
295100570 Black

- High-quality UV-resistant registration kit.
- 3" (7.6 cm).
- Easy-to-install without deformation, with a glue that will adhere to all surfaces, including SPARK.
- Available in two contrasting Colours that meet mandatory regulations for height and size.



## Whistle

295500554

- "Pea-less" whistle.
- Produces an extremely loud, high, penetrating sound that can be heard over long distances.
- Unaffected by water; just clear with one quick blow.



## Registration Kit

3" (7.6 cm) All watercraft  
295100578 Light Grey

- High-quality UV-resistant registration kit.
- 3" (7.6 cm).
- Easy-to-install without deformation, with a glue that will adhere to all surfaces, including SPARK.
- Available in two contrasting Colours that meet mandatory regulations for height and size.



## Registration Kit

4" (10.2 cm) All watercraft · Meets international laws  
295100631 Black

- High-quality UV-resistant registration kit.
- 4" (10.2 cm).
- Easy-to-install without deformation, with a glue that will adhere to all surfaces.
- Meets mandatory regulations for height and size and international laws.



## BRP reimagines the way you access your world

Sea-Doo is one of many success stories from BRP, the global company behind some of the most daringly innovative products and experiences that move you. Because it's not about the destination, it's about the journey – yours.

Discover our brands:

*ski-doo LYNX SEA-DOO CAN-AM ROTAX*

[www.brp.com](http://www.brp.com)





SEA-DOO.COM



MY26

A BRP BRAND

